



**TRILOBITE TESTING, INC.**

# DRILL STEM TEST REPORT

Samuel Gary Jr & Assoc Inc

**16-12s-16w Ellis**

1515 Wynkoop  
Ste 700  
Denver Co 80202  
ATTN: Clayton Camozzi

**Glassman #1-16**

Job Ticket: 47154 **DST#: 2**

Test Start: 2012.05.16 @ 15:35:33

## GENERAL INFORMATION:

Formation: **LKC G-J**

Deviated: No Whipstock: ft (KB)

Time Tool Opened: 17:26:58

Time Test Ended: 23:22:27

Test Type: Conventional Bottom Hole (Reset)

Tester: Ray Schwager

Unit No: 42

**Interval: 3276.00 ft (KB) To 3350.00 ft (KB) (TVD)**

Reference Elevations: 1945.00 ft (KB)

Total Depth: 3350.00 ft (KB) (TVD)

1937.00 ft (CF)

Hole Diameter: 7.88 inches Hole Condition: Fair

KB to GR/CF: 8.00 ft

**Serial #: 6625 Inside**

Press @ Run Depth: 39.71 psig @ 3283.00 ft (KB)

Capacity: 8000.00 psig

Start Date: 2012.05.16 End Date: 2012.05.16

Last Calib.: 2012.05.16

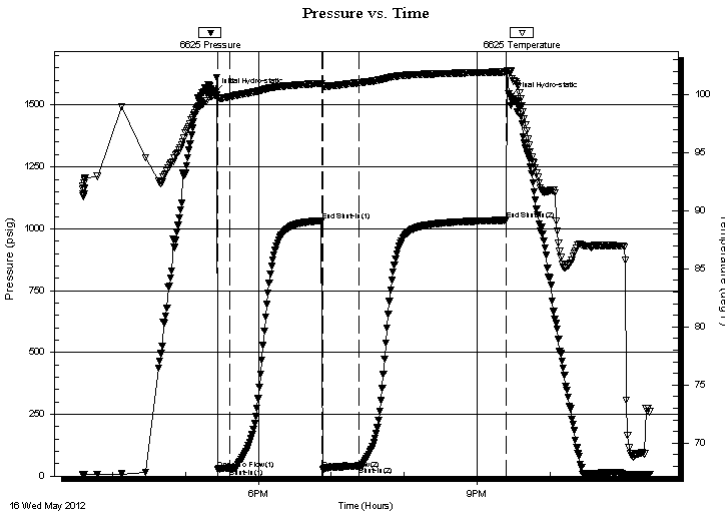
Start Time: 15:35:33 End Time: 23:22:27

Time On Btm: 2012.05.16 @ 17:24:28

Time Off Btm: 2012.05.16 @ 21:27:27

**TEST COMMENT:** 10-IFP-w k bl 1/8" to 1" bl  
75-ISIP-no bl  
30-FFP-fr to a strg bl 6" to bottom of bucket  
120-FSIP-no bl

## PRESSURE SUMMARY



Time (Min.)	Pressure (psig)	Temp (deg F)	Annotation
0	1551.18	99.92	Initial Hydro-static
3	27.05	99.70	Open To Flow (1)
12	33.17	99.83	Shut-In(1)
88	1033.01	100.98	End Shut-In(1)
89	26.14	100.75	Open To Flow (2)
119	39.71	101.04	Shut-In(2)
240	1034.44	101.98	End Shut-In(2)
243	1532.35	102.05	Final Hydro-static

## Recovery

Length (ft)	Description	Volume (bbl)
0.00	400'GIP	0.00
20.00	CO	0.10
15.00	O&GCM5%G20%O75%M	0.12

\* Recovery from multiple tests

## Gas Rates

Choke (inches)	Pressure (psig)	Gas Rate (Mcf/d)





**TRILOBITE  
TESTING, INC.**

# DRILL STEM TEST REPORT

**FLUID SUMMARY**

Samuel Gary Jr & Assoc Inc

**16-12s-16w Ellis**

1515 Wynkoop  
Ste 700  
Denver Co 80202  
ATTN: Clayton Camozzi

**Glassman #1-16**

Job Ticket: 47154

**DST#: 2**

Test Start: 2012.05.16 @ 15:35:33

## Mud and Cushion Information

Mud Type: Gel Chem  
Mud Weight: 9.00 lb/gal  
Viscosity: 51.00 sec/qt  
Water Loss: 7.95 in<sup>3</sup>  
Resistivity: ohm.m  
Salinity: 6000.00 ppm  
Filter Cake: 1.00 inches

Cushion Type:  
Cushion Length: ft  
Cushion Volume: bbl  
Gas Cushion Type:  
Gas Cushion Pressure: psig

Oil API: 39 deg API  
Water Salinity: ppm

## Recovery Information

Recovery Table

Length ft	Description	Volume bbl
0.00	400'GIP	0.000
20.00	CO	0.098
15.00	O&GCM5%G20%O75%M	0.119

Total Length: 35.00 ft      Total Volume: 0.217 bbl

Num Fluid Samples: 0

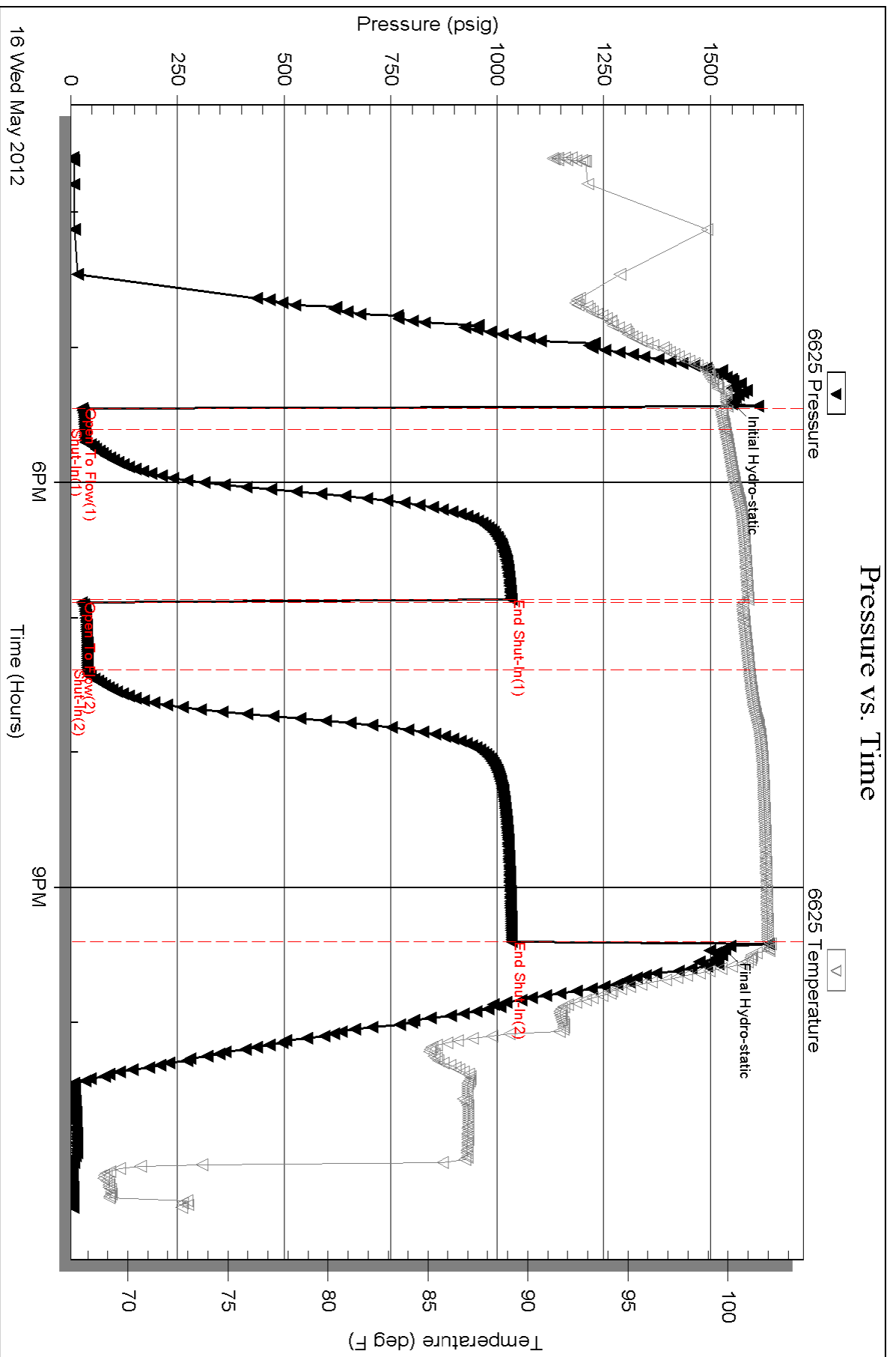
Num Gas Bombs: 0

Serial #:

Laboratory Name:

Laboratory Location:

Recovery Comments: Sampler Data: PSI 275# 1500MLOil 500mlGas



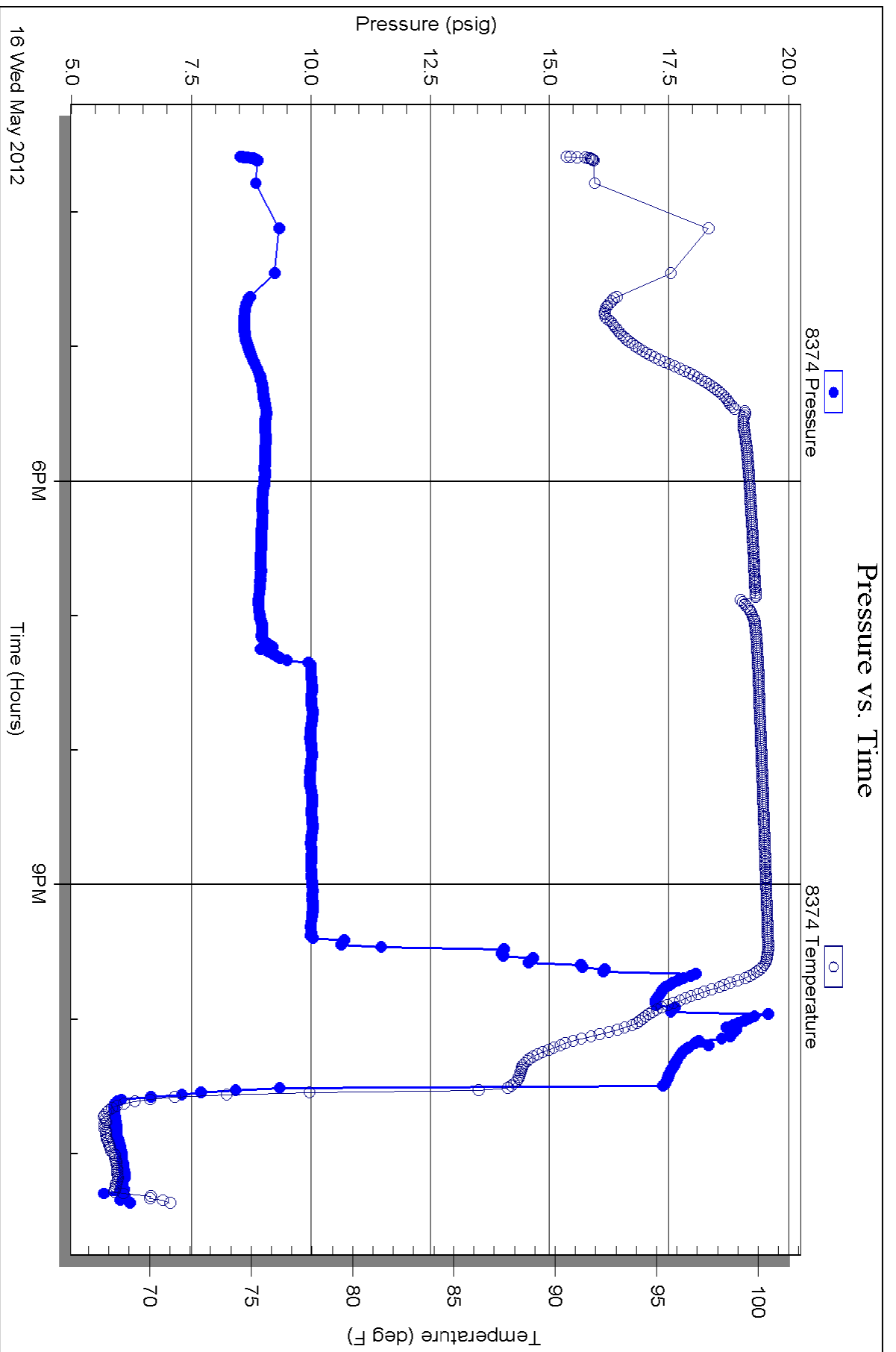
Serial #: 8374

Fluid

Samuel Gary Jr & Assoc Inc

Glassman #1-16

DST Test Number: 2



Triobite Testing, Inc

Ref. No: 47154

Printed: 2012.05.17 @ 07:41:16