

# Woolsey Operating Company, LLC

Scale 1:240 (5"=100') Imperial  
Measured Depth Log

**Well Name:** Nusser #3  
**Location:** NW NE SW  
**License Number:** APT 45-507-22870-00-00  
**Spud Date:** May 3, 2012  
**Surface Coordinates:** 1215' FSL, 2080' FWL Section 11-Twp 35 South - Rge 12 West  
**Bottom Hole Coordinates:** Vertical Hole  
**Ground Elevation (ft):** 1381  
**Logged Interval (ft):** 4600 To: 5560  
**Total Depth (ft):** 1394  
**Formation:** McLish Sand  
**Type of Drilling Fluid:** Chemical Mud, Displace at 3402'  
**Region:** Barber County, Kansas  
**Completed:** May 12, 2012  
 Printed by MUDLOG from WellSight Systems 1-800-447-1534 www.WellSight.com

**Company:** Woolsey Operating Company, LLC  
**Address:** 125 N. Market, Suite 1000  
 Wichita, KS 67202

**Name:** W. Scott Alberg  
**Company:** Alberg Petroleum, LLC  
**Address:** 609 Meadowlark Lane  
 Pratt, Kansas 67124

FORMATION TOPS		
SAMPLE TOPS	LOG TOPS	
HUSHPUCKEY SHALE	4563(3168)	4570(3175)
BKC	4610(3216)	4618(3224)
PAWNEE	4712(3318)	4715(3321)
CHEROKEE GROUP	4782(3388)	4780(3386)
CHEROKEE SAND	4792(3398)	4796(3402)
MISSISSIPPIAN	4804(3410)	4813(3419)
KINDERHOOK SHALE	5080(3688)	5081(3387)
WOODFORD SHALE	5153(3759)	5156(3762)
WOLA	5196(3802)	5203(3809)
SIMPSON GROUP	5330(3936)	5334(3940)
SIMPSON WILCOX	5349(3955)	5357(3963)
MCLISH SHALE	5430(4038)	5436(4042)
MCLISH SAND	5533(4141)	5542(4146)
RTD		
LTD	5560(4166)	5566(4172)

**COMMENTS**  
 Surface Casing: Set 5 joints 10 3/4" x 32# at 219' (tally 203.87') with 225 sxcs Class A, 2% gel, 3% cc, plug down at 8:00 pm, May 3, 2012. Cement did Circulate. Ran 21 joints 24# 8 5/8" casing, set at 912' (tally 897.67') with 100 sks Class A, 2% gel, 3% cc, plug down at 7:15 am May 5, 2012.  
 Production Casing: Ran 5 1/2".  
 Deviation Surveys: 1/4 - 220', 1/4 - 521', 1/2 - 1021, 1/2 - 1522, 1/4 - 1991', 1/4 - 2596', 1/4 - 2996, 1/2 - 3528', 3/4 - 3996', 1/4 4600', 1 1/2 - 4814', 1/4 - 4814', 1/4 - 5002', 1/4 - 5316'.  
 Contractor Bit Record: 1 - 14 3/4" out at 220'  
 2 - 7 7/8" PDC out at 912'  
 3 - 9 7/8" out at 915'  
 4 - Bit #2 back in at 915', out at 4600'  
 5 - 7 7/8" out at 5432'.  
 6 - 7 7/8" out at 5560'

**DSTs**  
 None Ran

**CREWS**  
 Duke Drilling Rig #  
 Tool Pusher - Galen Roach  
 Drillers - Days - Shane Meitler  
 Evening - Chales Stout  
 Motning - Craig Mertens

**ROCK TYPES**

Anhy	Congl	Lmst	Black sh
Bent	Sdy dolo	Mrlst	Gry sh
Brec	Sly dol	Salt	Shale
Chl	Gyp	Shst	Slystst
Clyst	Sdy Lmst	Ss	Slysh
Coal			

**ACCESSORIES**

Chlorite	Selec	Grysh
Dol	Pellet	Gryslt
Sand	Pisolite	Lms
Sily	Plant	Sandy lms
	Strom	Sh
	Fuss	Sitstn
	Oomoldic	
	STRINGER	
	Anhy	
	Arg	
	Bent	
	Coal	
	Dol	
	Gyp	
	Ls	
	Mrlst	
	Sltstrg	
	Carbsh	
	Clystn	
	Dol	

**MINERAL**

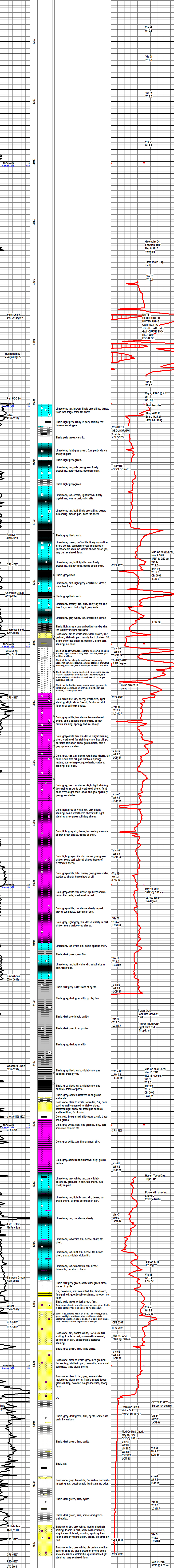
Anhy
Arg
Bent
Bit
Brecfrag
Calc
Carb
Chdkt
Chlt
Dol
Ferrel
Ferr
Glaup
Marl
Nodule
Phos
Pyr
Salt
Sand
Silt

**FOSSIL**

Algae
Amph
Belm
Bioclst
Brach
Bryozoa
Cephal
Coral
Crin
Echin
Fish
Foram
Fossil
Gastro
Oolite
Ostra

**TEXTURE**

Blocky
Chalky
Cryxln
Earthy
Finexln
Grainst
Lithogr
Microxln
Mudst
Packet
Wackest



May 12, 2012 5:50 @ 7:00 am