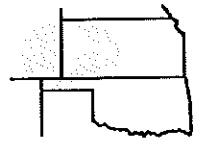


Pro-Stake LLC
 Oil Field & Construction Site Staking
 P.O. Box 2324
 Garden City, Kansas 67846
 Office/Fax: (620) 276-6159
 Cell: (620) 272-1499



241735bar
 PLAT NO.

10270
 INVOICE NO.

Ritchie Exploration, Inc.
 OPERATOR

#1 Baker 13CD
 LEASE NAME

Wichita Co, Ks
 COUNTY

13 17s 35w
 Sec. Twp. Rng.

Main loc. = 1780'FSL-830'FEL = 3134.9' gr.elev.
 Alt. #1 = 1780'FSL-870'FEL = 3136.9' gr. elev.

LOCATION SPOT

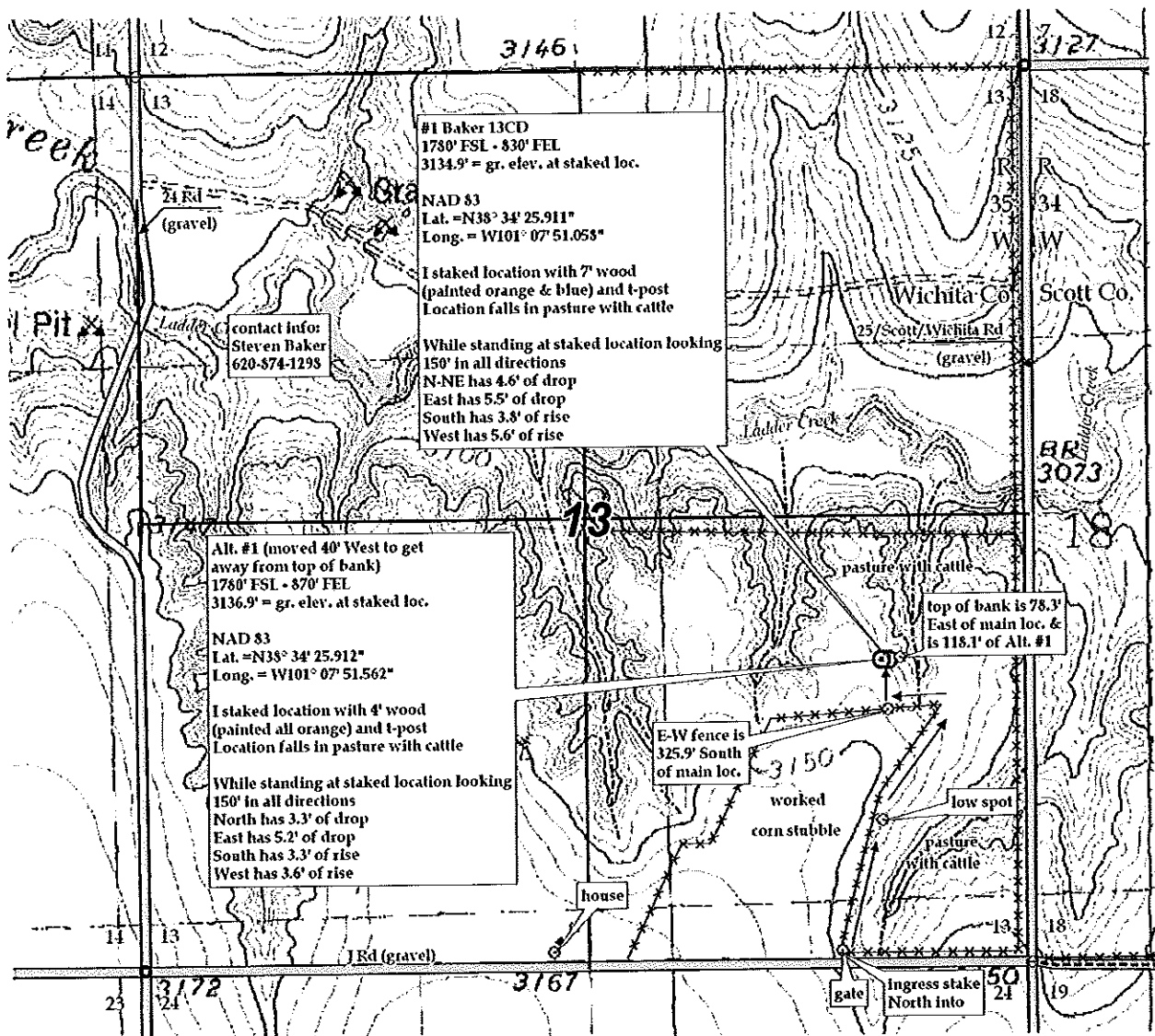
SCALE: 1" = 1000'
 DATE STAKED: Aug 24th, 2012
 MEASURED BY: Luke R.
 DRAWN BY: Luke R
 AUTHORIZED BY: Justin C.



Directions: From approx. 0.3 mile South of the South Side of Marienthal Ks at the intersection of Hwy 96 & Hwy 167 North – Now go 4.6 miles East on Hwy 96 – Now go 6 miles North on county line rd/Cr 25 to the SE corner of section 13-17s-35w – Now go 0.2 mile West on J Rd to ingress stake North into – Now go approx. 1620' N-NE through pasture with cattle – Now go approx. 310' West through pasture with cattle – Now go 326' North through pasture with cattle into main staked location.

Final ingress must be verified with land owner or Operator.

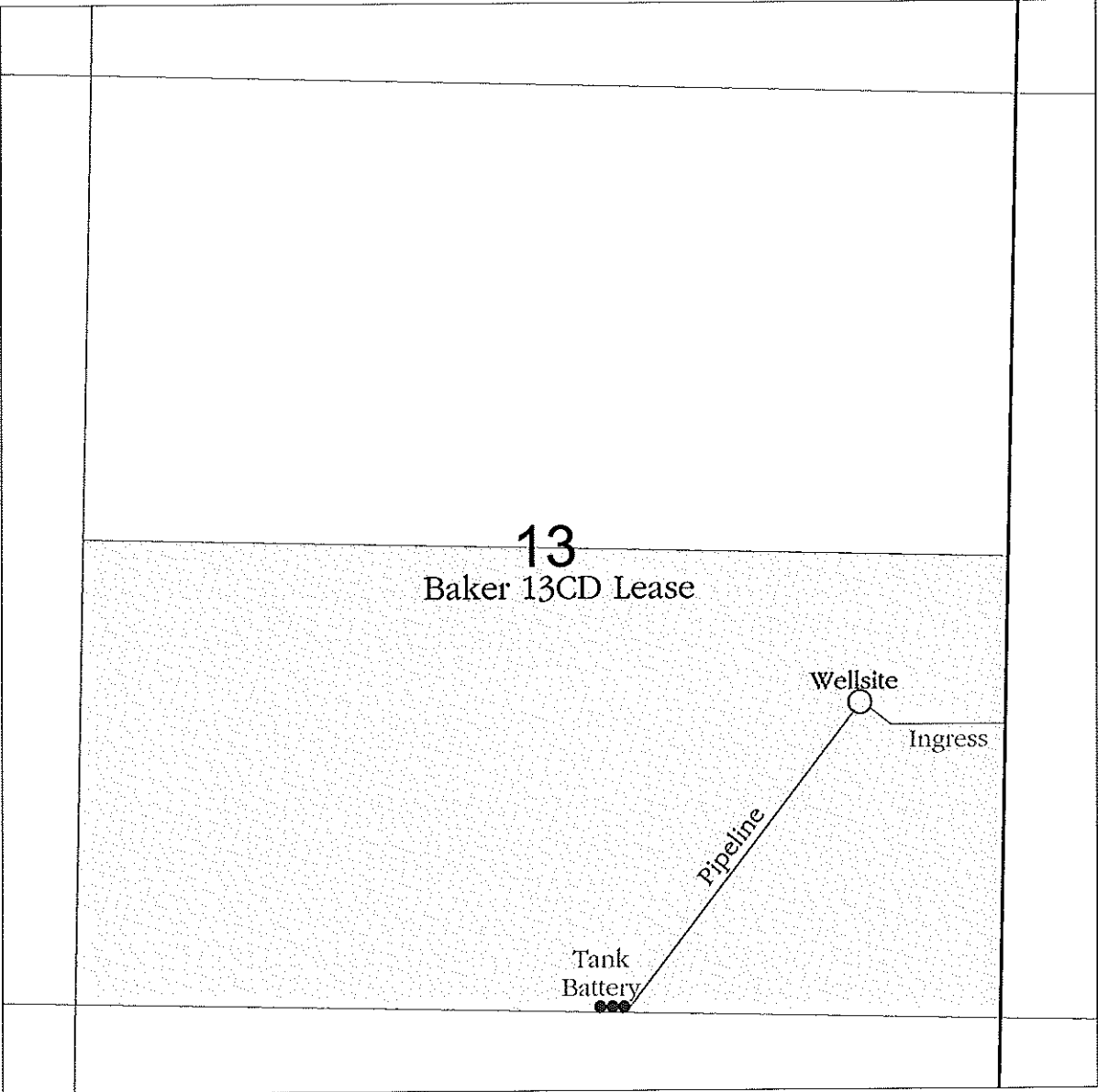
This drawing does not constitute a monumented survey or a land survey plat.
This drawing is for construction purposes only.



KANSAS SURFACE OWNER NOTIFICATION ACT

R 35 W

T
17
S



SCALE = 1 : 12,000 WICHITA COUNTY, KS