



DRILL STEM TEST REPORT

Prepared For: **Downing-Nelson Oil Co inc**

PO Box 1019
Hays KS 67601

ATTN: Ron Nelson

McCoy #1-29

29-20s-20w Pawnee,KS

Start Date: 2012.07.08 @ 13:20:36

End Date: 2012.07.08 @ 19:04:30

Job Ticket #: 47433 DST #: 1

Trilobite Testing, Inc

PO Box 362 Hays, KS 67601

ph: 785-625-4778 fax: 785-625-5620

Printed: 2012.07.18 @ 09:46:00



**TRILOBITE
TESTING, INC.**

DRILL STEM TEST REPORT

Dow ning-Nelson Oil Co inc

29-20s-20w Pawnee,KS

PO Box 1019
Hays KS 67601

McCoy #1-29

Job Ticket: 47433

DST#: 1

ATTN: Ron Nelson

Test Start: 2012.07.08 @ 13:20:36

GENERAL INFORMATION:

Formation: **Miss**

Deviated: No Whipstock: ft (KB)

Time Tool Opened: 15:27:31

Time Test Ended: 19:04:30

Test Type: Conventional Bottom Hole (Initial)

Tester: Ray Schwager

Unit No: 42

Interval: 4266.00 ft (KB) To 4302.00 ft (KB) (TVD)

Reference Elevations: 2156.00 ft (KB)

Total Depth: 4302.00 ft (KB) (TVD)

2148.00 ft (CF)

Hole Diameter: 7.85 inches Hole Condition: Fair

KB to GR/CF: 8.00 ft

Serial #: 6625 Inside

Press @ RunDepth: 43.74 psig @ 4272.00 ft (KB)

Capacity: 8000.00 psig

Start Date: 2012.07.08

End Date:

2012.07.08

Last Calib.:

2012.07.08

Start Time:

13:20:36

End Time:

19:04:30

Time On Btm:

2012.07.08 @ 15:23:31

Time Off Btm:

2012.07.08 @ 17:33:31

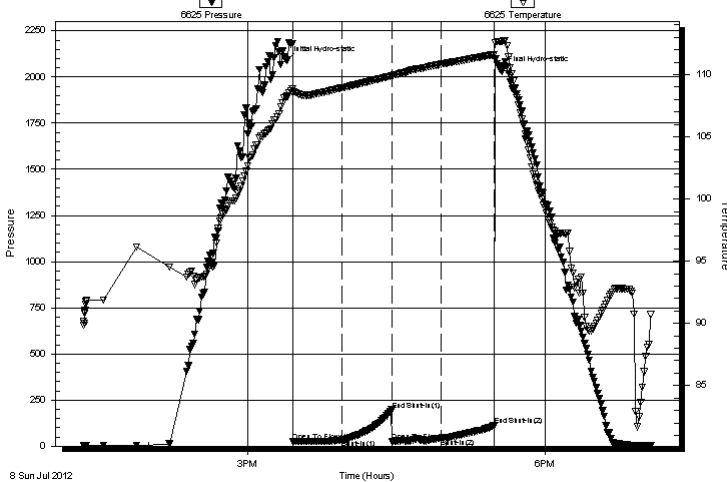
TEST COMMENT: 30-IFP-w k bl 1/8" to surface bl

30-ISIP-no bl

30-FFP-no bl

30-FSIP-no bl

Pressure vs. Time



PRESSURE SUMMARY

Time (Min.)	Pressure (psig)	Temp (deg F)	Annotation
0	2088.28	108.26	Initial Hydro-static
4	25.53	108.56	Open To Flow (1)
34	35.91	108.95	Shut-In(1)
64	196.27	109.89	End Shut-In(1)
64	27.10	109.88	Open To Flow (2)
94	43.74	110.83	Shut-In(2)
126	110.69	111.61	End Shut-In(2)
130	2037.62	112.68	Final Hydro-static

Recovery

Length (ft)	Description	Volume (bbl)
5.00	Mud	0.02

Gas Rates

Choke (inches)	Pressure (psig)	Gas Rate (Mcf/d)



**TRILOBITE
TESTING, INC.**

DRILL STEM TEST REPORT

Dow ning-Nelson Oil Co inc

29-20s-20w Pawnee,KS

PO Box 1019
Hays KS 67601

McCoy #1-29

Job Ticket: 47433

DST#: 1

ATTN: Ron Nelson

Test Start: 2012.07.08 @ 13:20:36

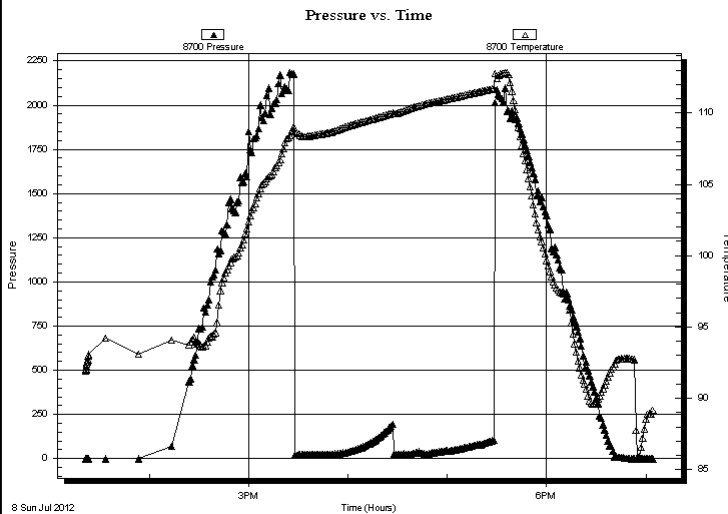
GENERAL INFORMATION:

Formation: **Miss**
 Deviated: No Whipstock: ft (KB)
 Time Tool Opened: 15:27:31
 Time Test Ended: 19:04:30
Interval: 4266.00 ft (KB) To 4302.00 ft (KB) (TVD)
 Total Depth: 4302.00 ft (KB) (TVD)
 Hole Diameter: 7.85 inches Hole Condition: Fair
 Test Type: Conventional Bottom Hole (Initial)
 Tester: Ray Schw ager
 Unit No: 42
 Reference Elevations: 2156.00 ft (KB)
 2148.00 ft (CF)
 KB to GR/CF: 8.00 ft

Serial #: 8700 Outside

Press @RunDepth: psig @ 4272.00 ft (KB) Capacity: 8000.00 psig
 Start Date: 2012.07.08 End Date: 2012.07.08 Last Calib.: 2012.07.08
 Start Time: 13:21:36 End Time: 19:04:00 Time On Btm:
 Time Off Btm:

TEST COMMENT: 30-IFP-w k bl 1/8" to surface bl
 30-ISIP-no bl
 30-FFP-no bl
 30-FSIP-no bl



PRESSURE SUMMARY

Time (Min.)	Pressure (psig)	Temp (deg F)	Annotation

Recovery

Length (ft)	Description	Volume (bbl)
5.00	Mud	0.02

Gas Rates

Choke (inches)	Pressure (psig)	Gas Rate (Mcf/d)



**TRILOBITE
TESTING, INC.**

DRILL STEM TEST REPORT

TOOL DIAGRAM

Dow ning-Nelson Oil Co inc

29-20s-20w Pawnee,KS

PO Box 1019
Hays KS 67601

McCoy #1-29

Job Ticket: 47433

DST#: 1

ATTN: Ron Nelson

Test Start: 2012.07.08 @ 13:20:36

Tool Information

Drill Pipe:	Length: 4222.00 ft	Diameter: 3.80 inches	Volume: 59.22 bbl	Tool Weight: 2200.00 lb
Heavy Wt. Pipe:	Length: 0.00 ft	Diameter: 0.00 inches	Volume: 0.00 bbl	Weight set on Packer: 25000.00 lb
Drill Collar:	Length: 30.00 ft	Diameter: 2.25 inches	Volume: 0.15 bbl	Weight to Pull Loose: 75000.00 lb
			<u>Total Volume: 59.37 bbl</u>	Tool Chased 0.00 ft
Drill Pipe Above KB:	7.00 ft			String Weight: Initial 60000.00 lb
Depth to Top Packer:	4266.00 ft			Final 60000.00 lb
Depth to Bottom Packer:	ft			
Interval between Packers:	36.00 ft			
Tool Length:	57.00 ft			
Number of Packers:	2	Diameter: 6.75 inches		

Tool Comments:

Tool Description	Length (ft)	Serial No.	Position	Depth (ft)	Accum. Lengths
------------------	-------------	------------	----------	------------	----------------

Change Over Sub	1.00			4246.00	
Shut In Tool	5.00			4251.00	
Hydraulic tool	5.00			4256.00	
Packer	5.00			4261.00	21.00 Bottom Of Top Packer
Packer	5.00			4266.00	
Stubb	1.00			4267.00	
Perforations	5.00			4272.00	
Recorder	0.00	6625	Inside	4272.00	
Recorder	0.00	8700	Outside	4272.00	
Perforations	27.00			4299.00	
Bullnose	3.00			4302.00	36.00 Bottom Packers & Anchor

Total Tool Length: 57.00



**TRILOBITE
TESTING, INC.**

DRILL STEM TEST REPORT

FLUID SUMMARY

Dow ning-Nelson Oil Co inc

29-20s-20w Pawnee,KS

PO Box 1019
Hays KS 67601

McCoy #1-29

Job Ticket: 47433

DST#: 1

ATTN: Ron Nelson

Test Start: 2012.07.08 @ 13:20:36

Mud and Cushion Information

Mud Type: Gel Chem

Cushion Type:

Oil API:

deg API

Mud Weight: 9.00 lb/gal

Cushion Length:

ft

Water Salinity:

ppm

Viscosity: 62.00 sec/qt

Cushion Volume:

bbbl

Water Loss: 11.12 in³

Gas Cushion Type:

Resistivity: ohm.m

Gas Cushion Pressure:

psig

Salinity: 8000.00 ppm

Filter Cake: 1.00 inches

Recovery Information

Recovery Table

Length ft	Description	Volume bbl
5.00	Mud	0.025

Total Length: 5.00 ft Total Volume: 0.025 bbl

Num Fluid Samples: 0

Num Gas Bombs: 0

Serial #:

Laboratory Name:

Laboratory Location:

Recovery Comments:

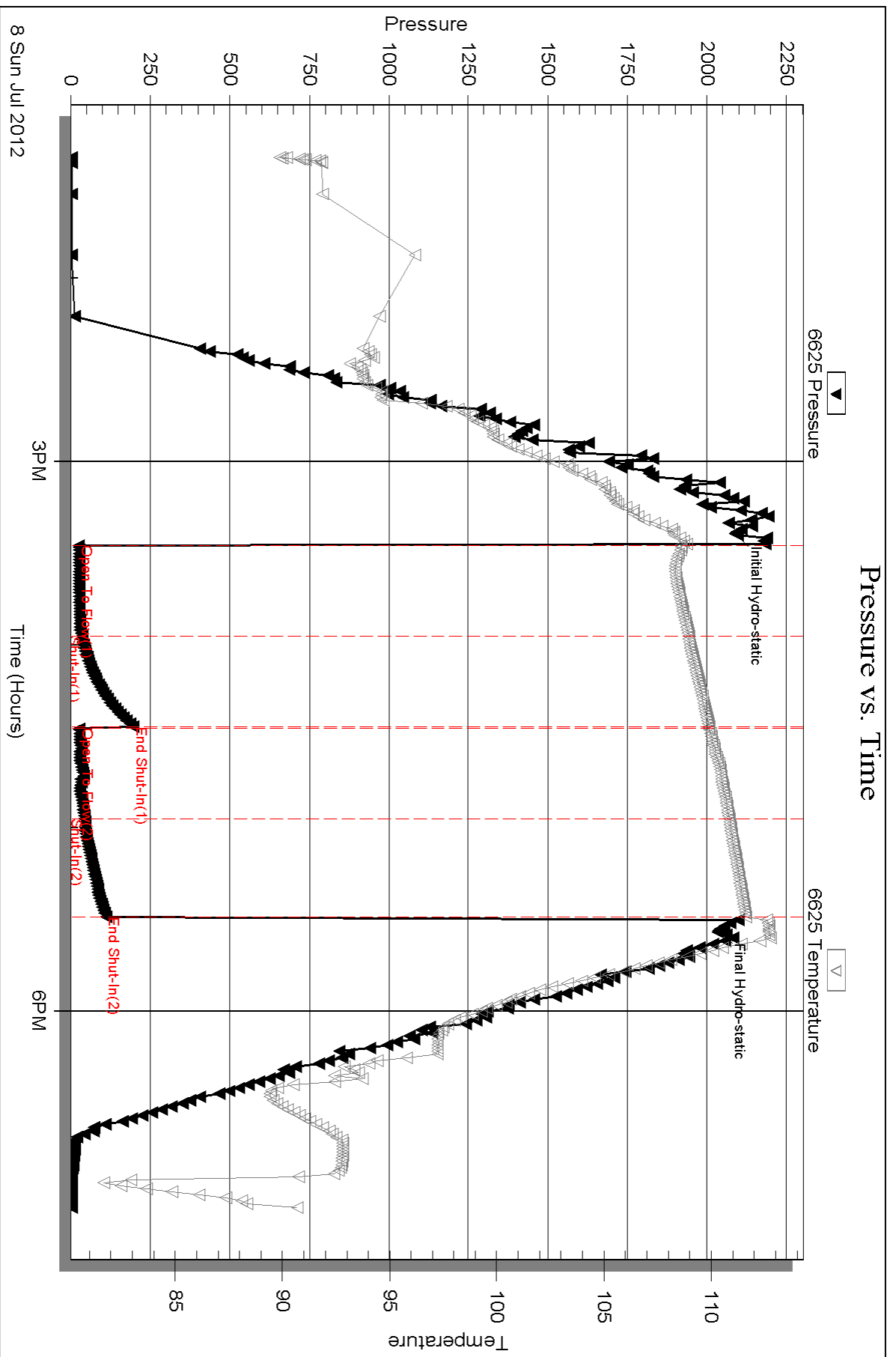
Serial #: 6625

Inside

Downing-Nelson Oil Co inc

McCoy #1-29

DST Test Number: 1

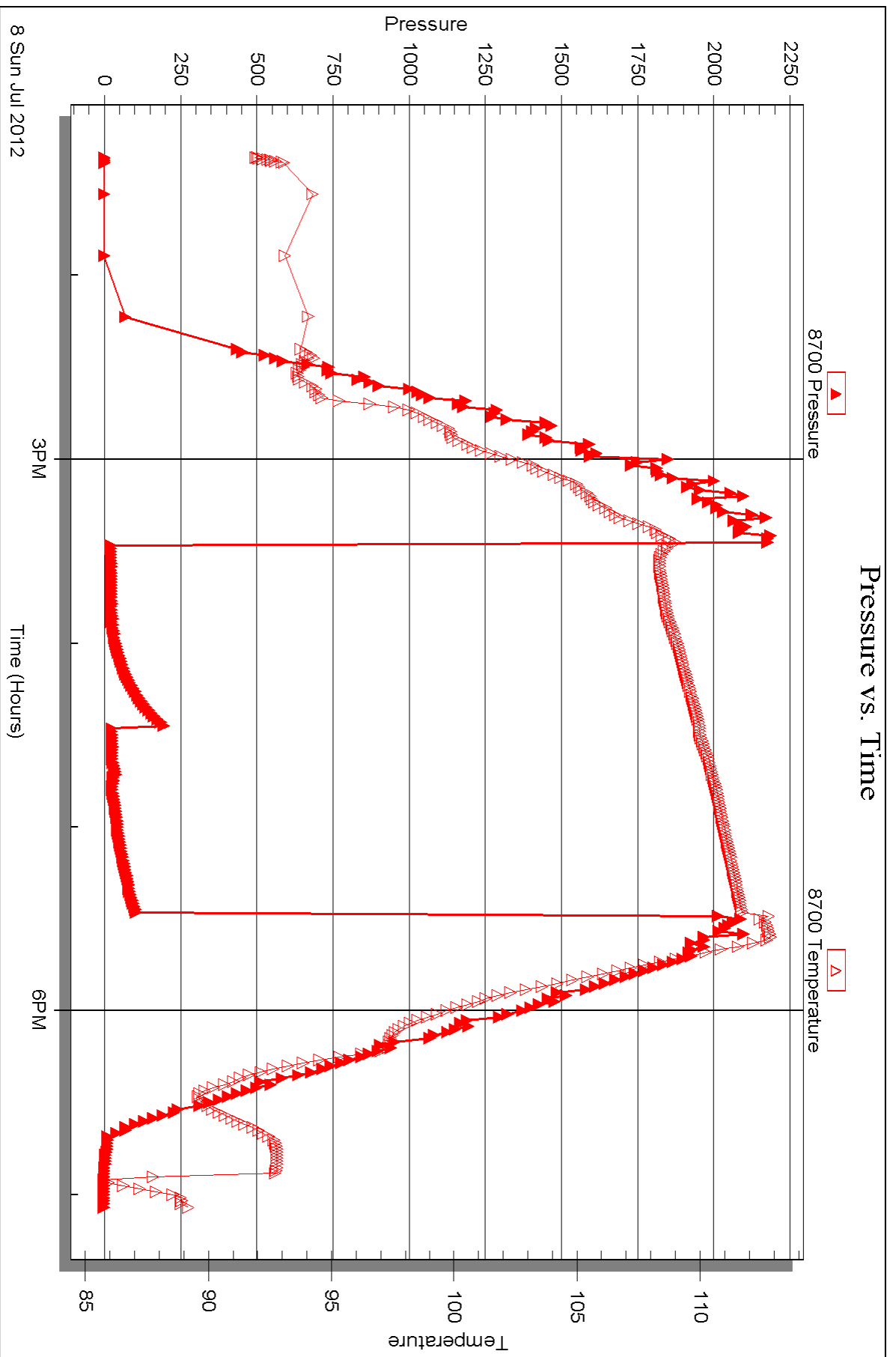


Serial #: 8700

Outside Dow n/ing-Nelson Oil Co inc

McCoy #1-29

DST Test Number: 1





DRILL STEM TEST REPORT

Prepared For: **Downing-Nelson Oil Co inc**

PO Box 1019
Hays KS 67601

ATTN: Ron Nelson

McCoy #1-29

29-20s-20w Pawnee,KS

Start Date: 2012.07.09 @ 00:55:48

End Date: 2012.07.09 @ 08:31:42

Job Ticket #: 47434 DST #: 2

Trilobite Testing, Inc

PO Box 362 Hays, KS 67601

ph: 785-625-4778 fax: 785-625-5620

Printed: 2012.07.18 @ 09:45:15



TRILOBITE TESTING, INC.

DRILL STEM TEST REPORT

Dow ning-Nelson Oil Co inc

29-20s-20w Pawnee,KS

PO Box 1019
Hays KS 67601

McCoy #1-29

Job Ticket: 47434

DST#: 2

ATTN: Ron Nelson

Test Start: 2012.07.09 @ 00:55:48

GENERAL INFORMATION:

Formation: **Miss**

Deviated: No Whipstock: ft (KB)

Time Tool Opened: 02:53:13

Time Test Ended: 08:31:42

Test Type: Conventional Bottom Hole (Reset)

Tester: Ray Schwager

Unit No: 42

Interval: 4266.00 ft (KB) To 4315.00 ft (KB) (TVD)

Reference Elevations: 2156.00 ft (KB)

Total Depth: 4315.00 ft (KB) (TVD)

2148.00 ft (CF)

Hole Diameter: 7.85 inches Hole Condition: Fair

KB to GR/CF: 8.00 ft

Serial #: 6625 Inside

Press @ Run Depth: 241.75 psig @ 4279.00 ft (KB)

Capacity: 8000.00 psig

Start Date: 2012.07.09

End Date:

2012.07.09

Last Calib.:

2012.07.09

Start Time: 00:55:48

End Time:

08:31:42

Time On Btm:

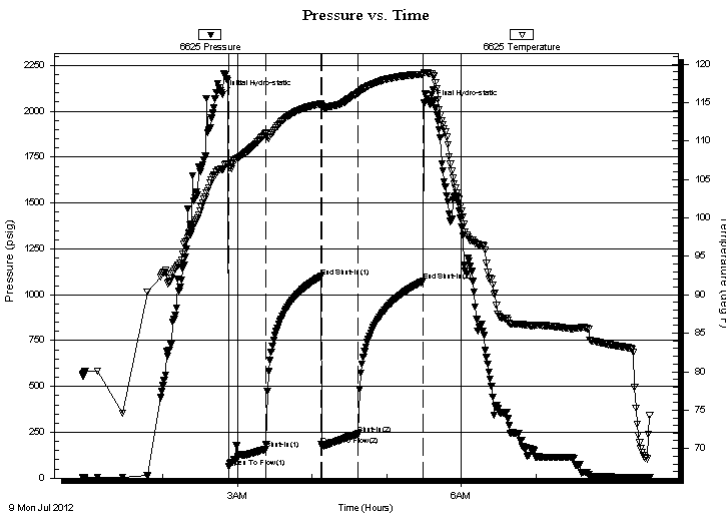
2012.07.09 @ 02:48:13

Time Off Btm:

2012.07.09 @ 05:35:12

TEST COMMENT: 30-IFP-w k to strg in 6 min
45-ISIP-1/4" bl bk
30-FFP-w k to strg in 7 min
45-FSIP-1/4" bl bk

PRESSURE SUMMARY



Time (Min.)	Pressure (psig)	Temp (deg F)	Annotation
0	2090.83	106.33	Initial Hydro-static
5	61.79	106.57	Open To Flow (1)
35	158.47	110.98	Shut-In(1)
79	1099.37	114.83	End Shut-In(1)
80	181.13	114.60	Open To Flow (2)
109	241.75	116.23	Shut-In(2)
161	1073.27	118.69	End Shut-In(2)
167	2036.25	118.76	Final Hydro-static

Recovery

Length (ft)	Description	Volume (bbl)
0.00	340'GIP	0.00
250.00	MGO 20%G5%M75%O	3.23
405.00	CO	5.68

* Recovery from multiple tests

Gas Rates

Choke (inches)	Pressure (psig)	Gas Rate (Mcf/d)



**TRILOBITE
TESTING, INC.**

DRILL STEM TEST REPORT

TOOL DIAGRAM

Dow ning-Nelson Oil Co inc

29-20s-20w Pawnee,KS

PO Box 1019
Hays KS 67601

McCoy #1-29

Job Ticket: 47434

DST#: 2

ATTN: Ron Nelson

Test Start: 2012.07.09 @ 00:55:48

Tool Information

Drill Pipe:	Length: 4227.00 ft	Diameter: 3.80 inches	Volume: 59.29 bbl	Tool Weight: 2200.00 lb
Heavy Wt. Pipe:	Length: 0.00 ft	Diameter: 0.00 inches	Volume: 0.00 bbl	Weight set on Packer: 25000.00 lb
Drill Collar:	Length: 30.00 ft	Diameter: 2.25 inches	Volume: 0.15 bbl	Weight to Pull Loose: 75000.00 lb
			<u>Total Volume: 59.44 bbl</u>	Tool Chased 0.00 ft
Drill Pipe Above KB:	12.00 ft			String Weight: Initial 60000.00 lb
Depth to Top Packer:	4266.00 ft			Final 61000.00 lb
Depth to Bottom Packer:	ft			
Interval between Packers:	49.00 ft			
Tool Length:	70.00 ft			
Number of Packers:	2	Diameter: 6.75 inches		

Tool Comments:

Tool Description

Tool Description	Length (ft)	Serial No.	Position	Depth (ft)	Accum. Lengths
Change Over Sub	1.00			4246.00	
Shut In Tool	5.00			4251.00	
Hydraulic tool	5.00			4256.00	
Packer	5.00			4261.00	21.00 Bottom Of Top Packer
Packer	5.00			4266.00	
Stubb	1.00			4267.00	
Perforations	12.00			4279.00	
Recorder	0.00	6625	Inside	4279.00	
Recorder	0.00	8700	Outside	4279.00	
Blank Spacing	33.00			4312.00	
Bullnose	3.00			4315.00	49.00 Bottom Packers & Anchor

Total Tool Length: 70.00



**TRILOBITE
TESTING, INC.**

DRILL STEM TEST REPORT

FLUID SUMMARY

Dow ning-Nelson Oil Co inc

29-20s-20w Pawnee,KS

PO Box 1019
Hays KS 67601

McCoy #1-29

Job Ticket: 47434

DST#: 2

ATTN: Ron Nelson

Test Start: 2012.07.09 @ 00:55:48

Mud and Cushion Information

Mud Type: Gel Chem

Cushion Type:

Oil API:

39 deg API

Mud Weight: 9.00 lb/gal

Cushion Length:

ft

Water Salinity:

ppm

Viscosity: 62.00 sec/qt

Cushion Volume:

bbbl

Water Loss: 11.10 in³

Gas Cushion Type:

Resistivity: ohm.m

Gas Cushion Pressure:

psig

Salinity: 8000.00 ppm

Filter Cake: 1.00 inches

Recovery Information

Recovery Table

Length ft	Description	Volume bbbl
0.00	340'GIP	0.000
250.00	MGO 20%G5%M75%O	3.234
405.00	CO	5.681

Total Length: 655.00 ft

Total Volume: 8.915 bbl

Num Fluid Samples: 0

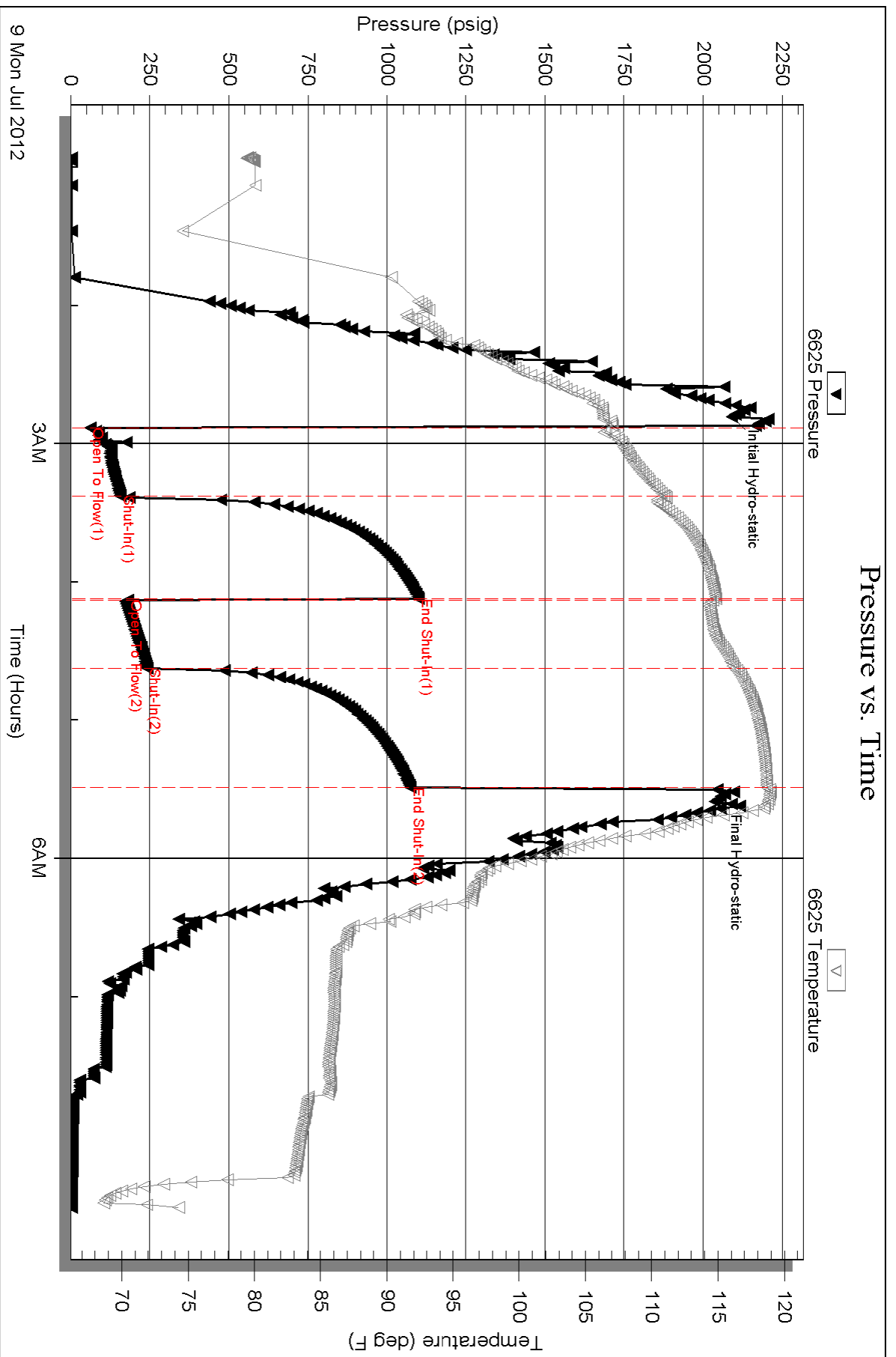
Num Gas Bombs: 0

Serial #:

Laboratory Name:

Laboratory Location:

Recovery Comments:



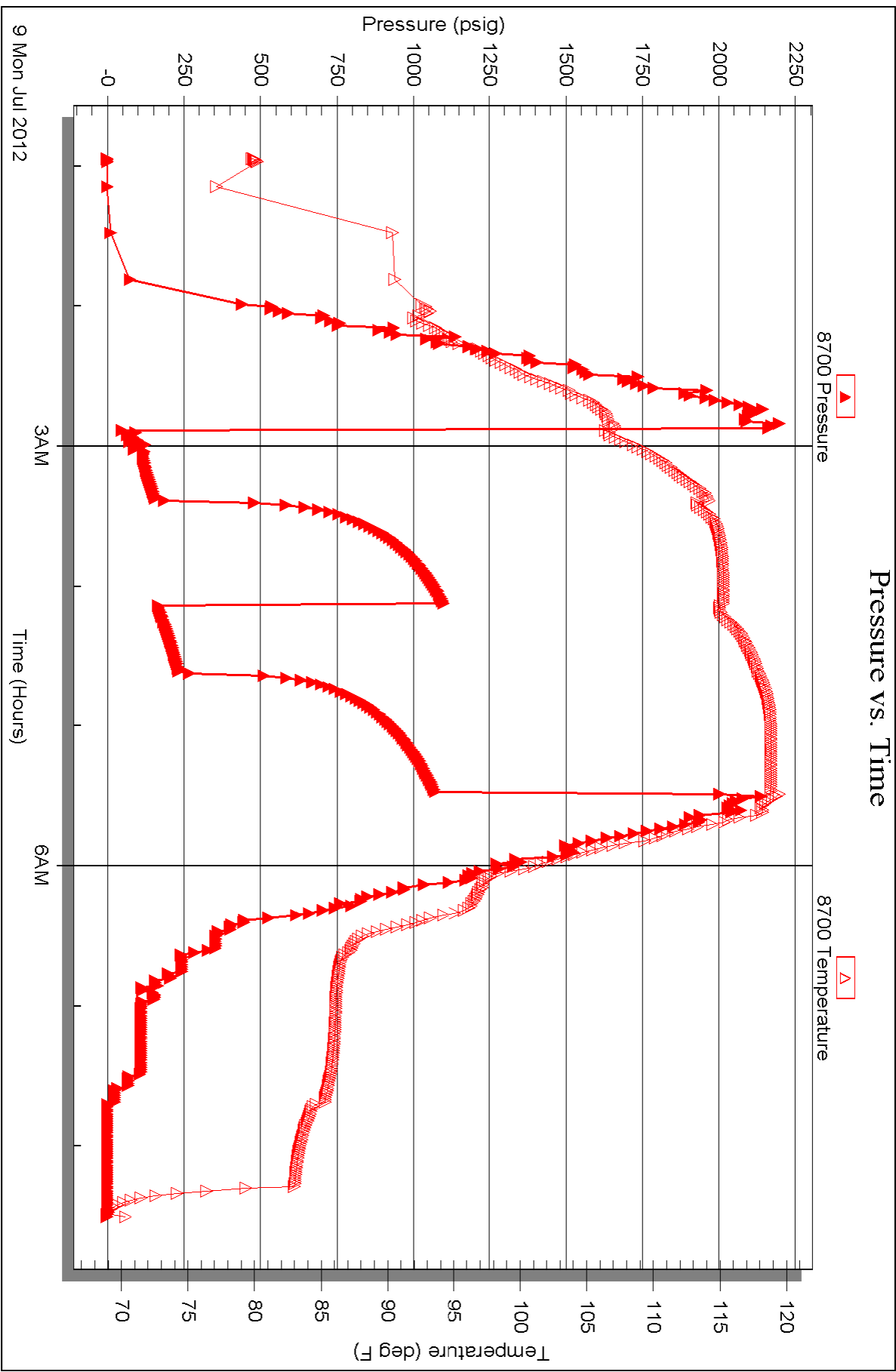
Serial #: 8700

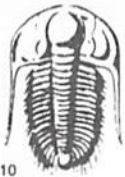
Outside

Dow n/mg-Nelson Oil Co inc

McCoy #1-29

DST Test Number: 2





TRILOBITE TESTING INC.

P.O. Box 1733 • Hays, Kansas 67601

Test Ticket

NO. 47433

Well Name & No. McCoy #1-29 Test No. 1 Date 7-8-12
 Company Downing-Nelson Oil Co Inc Elevation 2156 KB 2148 GL
 Address PO Box 1019 Hays, Ks 67601
 Co. Rep / Geo. Ron Nelson Rig Discovery rig 4
 Location: Sec. 29 Twp. 20^s Rge. 20^w Co. PAWNEE State Ko

Interval Tested 4266-4302 Zone Tested MISS
 Anchor Length 36 Drill Pipe Run 4222 Mud Wt. 8.9
 Top Packer Depth 4261 Drill Collars Run 30 Vis 62
 Bottom Packer Depth 4266 Wt. Pipe Run - WL 11.2
 Total Depth 4302 Chlorides 8000 ppm System LCM 2#
 Blow Description IFP - WEAK BLOW 1/8" TO SURFACE BLOW
ISIP - NO BLOW
FFP - NO BLOW
FSIP - NO BLOW

Rec	Feet of	%gas	%oil	%water	%mud
<u>5</u>	<u>Mud</u>				
Rec	Feet of	%gas	%oil	%water	%mud
Rec	Feet of	%gas	%oil	%water	%mud
Rec	Feet of	%gas	%oil	%water	%mud
Rec	Feet of	%gas	%oil	%water	%mud

Rec Total 5 BHT 111 Gravity - API RW - @ - °F Chlorides - ppm

(A) Initial Hydrostatic 2088 Test 1250 T-On Location 1115
 (B) First Initial Flow 25 Jars - T-Started 1320
 (C) First Final Flow 35 Safety Joint - T-Open 1525
 (D) Initial Shut-In 196 Circ Sub - T-Pulled 1725
 (E) Second Initial Flow 27 Hourly Standby - T-Out 1904
 (F) Second Final Flow 43 Mileage 115 RT 178.25
 (G) Final Shut-In 110 Sampler -
 (H) Final Hydrostatic 2037 Straddle - Ruined Shale Packer -
 Shale Packer - Ruined Packer -
 Extra Packer - Extra Copies -
 Extra Recorder - Sub Total 0
 Day Standby - Total 1428.25
 Accessibility - MP/DST Disc't -
 Sub Total 1428.25

Approved By _____ Our Representative RAY SCHWAGER THANK YOU

Trilobite Testing Inc. shall not be liable for damaged of any kind of the property or personnel of the one for whom a test is made, or for any loss suffered or sustained, directly or indirectly, through the use of its equipment, or its statements or opinion concerning the results of any test, tools lost or damaged in the hole shall be paid for at cost by the party for whom the test is made.



TRILOBITE TESTING INC.

P.O. Box 1733 • Hays, Kansas 67601

Test Ticket

NO. 47434

4/10

Well Name & No. McCoy #1-29 Test No. 2 Date 7-8-12
 Company Downing-Nelson Oil Co Inc Elevation 2156 KB 2148 GL
 Address PO Box 1019 Hays, Ks 67601
 Co. Rep / Geo. Ron Nelson Rig Discovery 194
 Location: Sec. 29 Twp. 20^s Rge. 20^w Co. Pawnee State K

Interval Tested 4266-4315 Zone Tested MISS
 Anchor Length 49 Drill Pipe Run 4227 Mud Wt. 8.9
 Top Packer Depth 4261 Drill Collars Run 30 Vis 62
 Bottom Packer Depth 4266 Wt. Pipe Run - WL 11.2
 Total Depth 4315 Chlorides 8000 ppm System LCM 2#

Blow Description IFP - WEAK TO STRONG IN 6 MIN
ISIP - 1/4" BLOW BACK
FFP - WEAK TO STRONG IN 7 MIN
FSIP - 1/4" BLOW BACK

Rec	Feet of	%gas	%oil	%water	%mud
<u>405</u>	<u>CO</u>				
<u>250</u>	<u>MGO</u>	<u>20</u>	<u>75</u>		<u>5</u>
<u>340</u>	<u>GIP</u>				

Rec Total 655 BHT 118 Gravity 39 API RW - @ - °F Chlorides - ppm

(A) Initial Hydrostatic 2090 Test 1250 T-On Location 2320
 (B) First Initial Flow 61 Jars T-Started 0055
 (C) First Final Flow 158 Safety Joint T-Open 0250
 (D) Initial Shut-In 1099 Circ Sub T-Pulled 0520
 (E) Second Initial Flow 181 Hourly Standby T-Out 0831
 (F) Second Final Flow 241 Mileage 178.25 Comments _____
 (G) Final Shut-In 1073 Sampler _____
 (H) Final Hydrostatic 2036 Straddle _____ Ruined Shale Packer _____
 Shale Packer _____ Ruined Packer _____
 Extra Packer _____ Extra Copies _____
 Initial Open 30 Extra Recorder _____ Sub Total 0
 Initial Shut-In 45 Day Standby _____ Total 1428.25
 Final Flow 30 Accessibility _____ MP/DST Disc't _____
 Final Shut-In 45 Sub Total 1428.25

Approved By _____ Our Representative RAY SCHWAGER *Thank you*

Trilobite Testing Inc. shall not be liable for damaged of any kind of the property or personnel of the one for whom a test is made, or for any loss suffered or sustained, directly or indirectly, through the use of its equipment, or its statements or opinion concerning the results of any test, tools lost or damaged in the hole shall be paid for at cost by the party for whom the test is made.