

Jeff Christian

PETROLEUM GEOLOGIST
Wichita, Kansas

GEOLOGIST'S REPORT

DRILLING TIME AND SAMPLE LOG

OPERATOR **MURFIN DRILLING COMPANY**
LEASE **WASSON # 1-31**
LOCATION **1850' FSL & 750' FEL**

SEC. **31** TWP. **4 S** R. **29 W**
COUNTY **DECATUR** STATE **KANSAS**

FIELD **WILDCAT**
API **15-039-21152**

CONTRACTOR **MURFIN** RIG NO. **8**
DRILLING STARTED **06/25/2012** COMPLETED **07/04/2012**

WILD DISPLACED **2821** MUD TYPE **CHEMICAL**
DRILLING TIME KEPT FROM **3876** TO **RTD**
SAMPLES SAVED FROM **3880** TO **RTD**
SAMPLES EXAMINED FROM **3880** TO **RTD**

GEOLOGICAL SUPERVISION FROM **3640'** TO **RTD**

MEASUREMENTS FROM 6'
CASING RECORD
CONDUCTOR NONE
Surface **8.5/8" @ 220'**
W/ **1/8" SX**
Production NONE

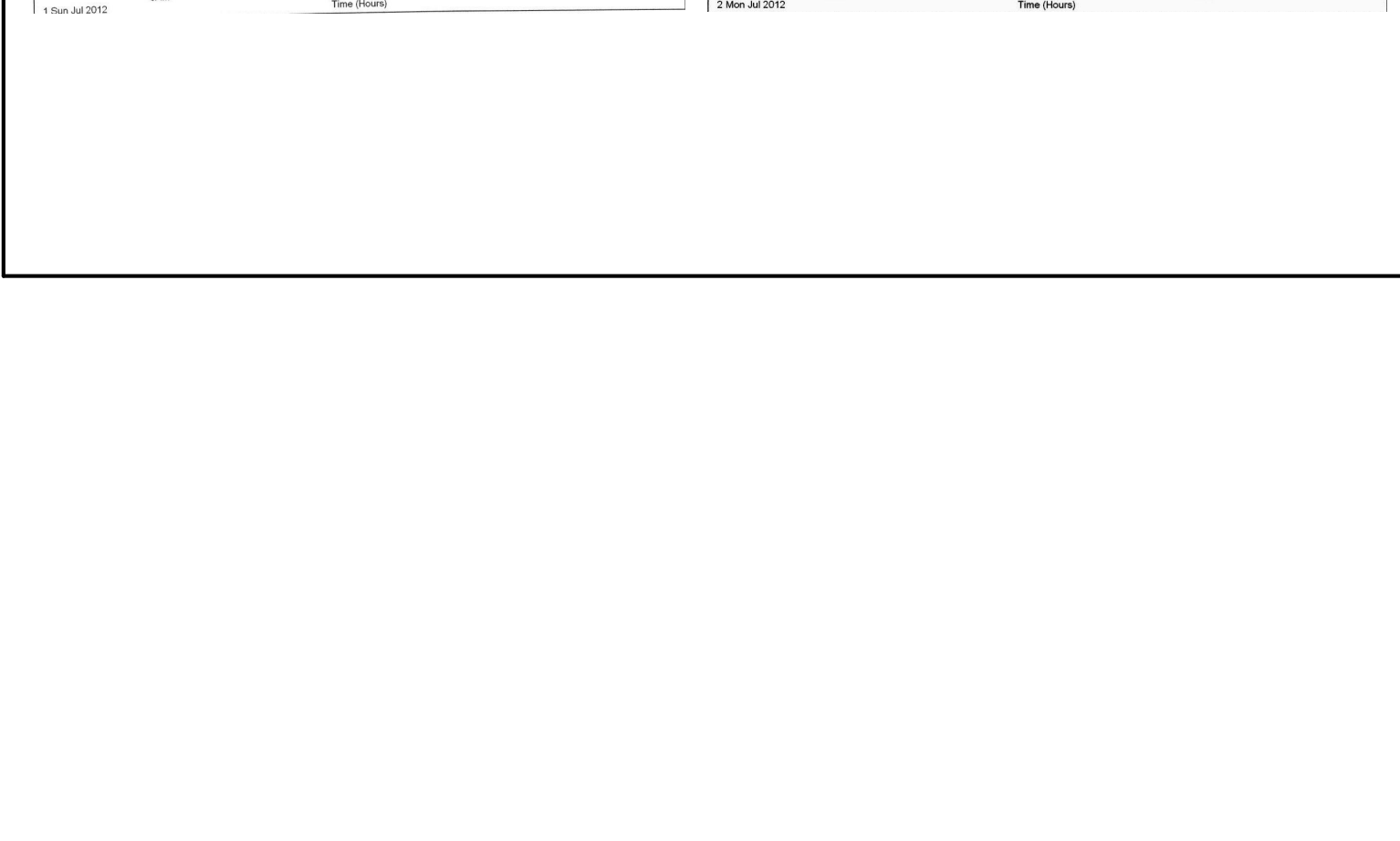
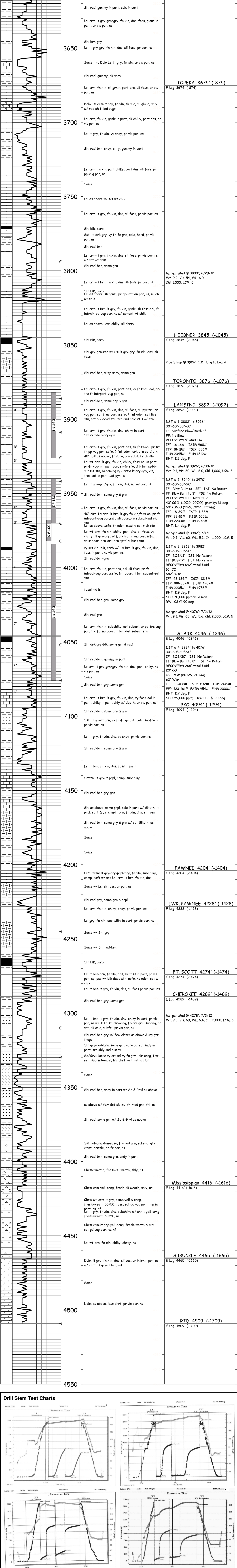
ELEVATIONS
BH **2800'**
CL **2795'**

FORMATION NAME	LOG TOP DATUM	SAMPLE DATE
ANHYDRITE	2545' (-225)	2545' (-255)
TOPEKA	3674' (-874)	3675' (-875)
HEEBNER	3845' (-1045)	3845' (-1045)
LANSING	3892' (-1092)	3892' (-1092)
STARK	4046' (-1246)	4048' (-1248)
RKC	4094' (-1294)	4094' (-1294)
CHEROKEE	4289' (-1489)	4289' (-1489)
MISSISSIPPIAN	4416' (-1616)	4416' (-1616)
ARBUCKLE	4465' (-1665)	4465' (-1665)
TOTAL DEPTH	4509' (-1709)	4509' (-1709)

DATE	7:00 AM DEPTH	REMARKS
6/25/12	MIRT	SPUD 3:00 pm
6/26/12	530'	DRLG. dev. 3/4 deg. @ 220'
6/27/12	2330'	DRLG.
6/28/12	3310'	DRLG.
6/29/12	3810'	DRLG.
6/30/12	3926'	TIH after DST # 1 dev. 1/2 deg.
7/1/12	3982'	TIH for DST # 3
7/2/12	4076'	OB w/ DST # 4
7/3/12	4182'	DRLG. RTD 4515' @ 5:15 pm dev. 1 deg.
7/4/12	4509'	FINISH LOGGING @ 3:30 am P&A

Remarks
Base on electric log analysis and drill stem test results, the Wasson # 1-31 was declared dry and abandoned.
Electric log measurements correlate about even compared to rotary measurements.
Sample tops adjusted to the electric log.
Samples deposited at the Kansas Geological Survey.
Respectfully Submitted,
Jeff Christian
Jeff Christian

LITH.	0	DRILL TIME (MIN/FT)	10	DEPTH (200)	SAMPLE DESCRIPTIONS	REMARKS
-------	---	---------------------	----	-------------	---------------------	---------



DST #	Pressure (PSIA)	Temperature (TEMP)
DST # 1	3926'	3926'
DST # 2	3982'	3982'
DST # 3	4076'	4076'
DST # 4	4182'	4182'