



TRILOBITE TESTING, INC.

DRILL STEM TEST REPORT

Oil Producers Inc
 1710 N Waterfront Pkwy
 Wichita, KS 67206
 ATTN: Mac Armstrong

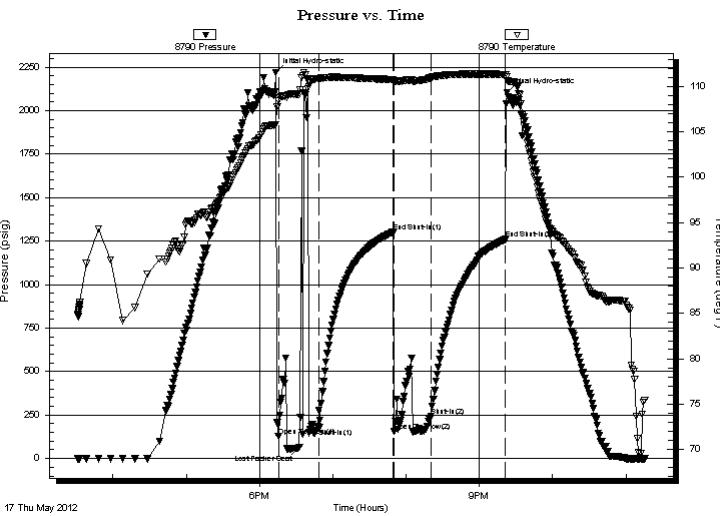
28-30S-18W Kiowa
Caplinger-Paxton 1-2
 Job Ticket: 46959 **DST#: 1**
 Test Start: 2012.05.17 @ 15:30:56

GENERAL INFORMATION:

Formation: **Lansing "A"**
 Deviated: No Whipstock: ft (KB)
 Test Type: Conventional Bottom Hole (Initial)
 Time Tool Opened: 18:15:26 Tester: Leal Cason
 Time Test Ended: 23:15:26 Unit No: 63
 Interval: **4378.00 ft (KB) To 4400.00 ft (KB) (TVD)** Reference Elevations: 2167.00 ft (KB)
 Total Depth: 4400.00 ft (KB) (TVD) 2155.00 ft (CF)
 Hole Diameter: 7.88 inches Hole Condition: Good KB to GR/CF: 12.00 ft

Serial #: 8790 Inside
 Press @ Run Depth: 241.87 psig @ 4379.00 ft (KB) Capacity: 8000.00 psig
 Start Date: 2012.05.17 End Date: 2012.05.17 Last Calib.: 2012.05.17
 Start Time: 15:31:01 End Time: 23:15:25 Time On Btm: 2012.05.17 @ 18:13:26
 Time Off Btm: 2012.05.17 @ 21:22:56

TEST COMMENT: IF: Strong Blow , BOB in 4 minutes, Lost Packer Seat @ 22 minutes, Reset Packers
 IS: No Blow Back
 FF: Weak Surface Blow , Dead @ 5 minutes
 FS: No Blow Back



PRESSURE SUMMARY

Time (Min.)	Pressure (psig)	Temp (deg F)	Annotation
0	2219.64	105.82	Initial Hydro-static
2	128.35	108.44	Open To Flow (1)
19	65.67	109.13	Lost Packer Seat
36	176.43	110.88	Shut-In(1)
96	1300.57	110.77	End Shut-In(1)
97	157.63	110.43	Open To Flow (2)
127	241.87	110.97	Shut-In(2)
188	1259.98	111.33	End Shut-In(2)
190	2104.43	110.67	Final Hydro-static

Recovery

Length (ft)	Description	Volume (bbl)
0.00	180 GIP	0.00
240.00	GCM 5%G 95%M	3.37

Gas Rates

Choke (inches)	Pressure (psig)	Gas Rate (Mcf/d)



**TRILOBITE
TESTING, INC.**

DRILL STEM TEST REPORT

FLUID SUMMARY

Oil Producers Inc
1710 N Waterfront Pkwy
Wichita, KS 67206
ATTN: Mac Armstrong

28-30S-18W Kiowa
Caplinger-Paxton 1-2
Job Ticket: 46959 **DST#: 1**
Test Start: 2012.05.17 @ 15:30:56

Mud and Cushion Information

Mud Type: Gel Chem	Cushion Type:	Oil API:	deg API
Mud Weight: 9.00 lb/gal	Cushion Length: ft	Water Salinity:	ppm
Viscosity: 48.00 sec/qt	Cushion Volume: bbl		
Water Loss: 8.79 in ³	Gas Cushion Type:		
Resistivity: ohm.m	Gas Cushion Pressure: psig		
Salinity: 7600.00 ppm			
Filter Cake: 0.20 inches			

Recovery Information

Recovery Table

Length ft	Description	Volume bbl
0.00	180 GIP	0.000
240.00	GCM 5%G 95%M	3.367

Total Length: 240.00 ft Total Volume: 3.367 bbl
 Num Fluid Samples: 0 Num Gas Bombs: 0 Serial #:
 Laboratory Name: Laboratory Location:
 Recovery Comments:

