

GEOLOGIC REPORT

DAVID J. GOLDAK

WICHITA, KANSAS
Scale 1:240 (5"=100') Imperial
Measured Depth Log

Well Name: Jensen Trust #34-9-11-19
Location: Section 34 - T11S - R19W
License Number: API: 15-051-26249
Spud Date: 03 / 03 / 2012
Surface Coordinates: 2260' FSL and 720' FEL
Approx. N/2 - NE - SE
Region: Ellis Co., KS
Drilling Completed: 03 / 11 / 2012
Bottom Hole Coordinates:
Ground Elevation (ft): 2143' K.B. Elevation (ft): 2151'
Logged Interval (ft): 3000' To: 3795' Total Depth (ft): 3795'
Formation: Arbuckle
Type of Drilling Fluid: Chemical - Mud Co

Printed by MUD.LOG from WellSight Systems 1-800-447-1534 www.WellSight.com

OPERATOR

Company: Klabzuba Oil & Gas, Inc.
Address: 700 17th Street, Suite 1300
Denver, Colorado 80202

GEOLOGIST

Name: David J. Goldak
Company: D. J. GOLDAK, INC.
Address: 155 N. Market, Suite 710
Wichita, Kansas 67202

General Info

CONTRACTOR: Southwind Drilling, Rig #6

BIT RECORD:

No.	Size	Make	Jets	Out	Feet	Hours
1	12-1/4	JZ-HA1C-New	4-13s	265	265	4.75
2	7-7/8	Reed-S52	15-14-14	3795	3530	110.50

SURVEYS: 265'-0.00, 3162'-0.75, 3795'-1.0

GENERAL DRILLING & PUMP INFORMATION:

Pumping 60 S/M, 7.7 B/M, with 850-950 psi at the standpipe.
Drilling with 28,000-30,000 lbs on bit, at 70-80 RPM.

Daily Status

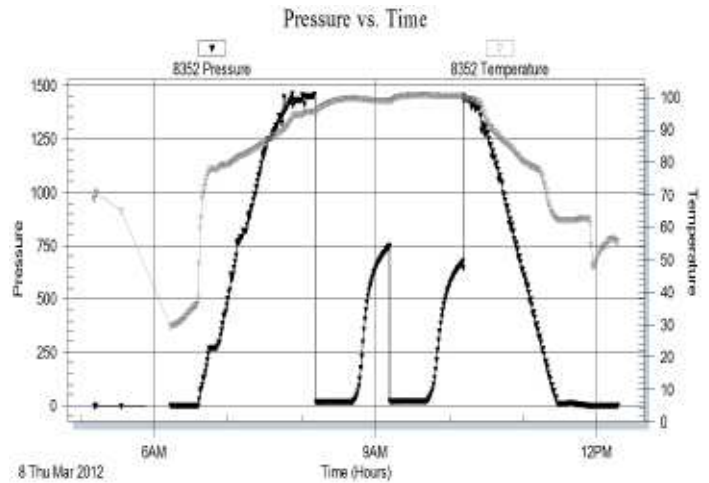
03/03/12 - Spud at 4:30 PM; Set 8-5/8" Csg at 263'
03/04/12 - 265' WOC; DP @ 9:45 AM
03/05/12 - 1,350' Drilling
03/06/12 - 2,103' Drilling
03/07/12 - 2,706' Drilling; Displace @ 2,980'
03/08/12 - 3,162' TIH with DST #1
03/09/12 - 3,420' Drilling; DST #2 @ 3,477'
03/10/12 - 3,535' Drilling
03/11/12 - 3,684' TIH after DST #3; RTD 3,795' @ 1:25 PM

DST #1: 3,115' - 3,132' (Topeka) 30" - 30" - 30" - 30"
Depth corrected to 3,145' - 3,162'

IF: Weak surface blow, died in 9 minutes
ISI: No blow back
FF: No blow
FSI: No blow back

RECOVERY: 10' Total Fluid, consisting of:
10' MW w/ oil spots (Tr O, 70% W, 30% M)
Sampler: Tr O, 200 ml M & 900 ml W @ 40 psi
Chlorides recovery: 60,000 ppm

SIP: 746-675; FP: 13-18, 19-21; HP: 1456-1429; BHT: 100

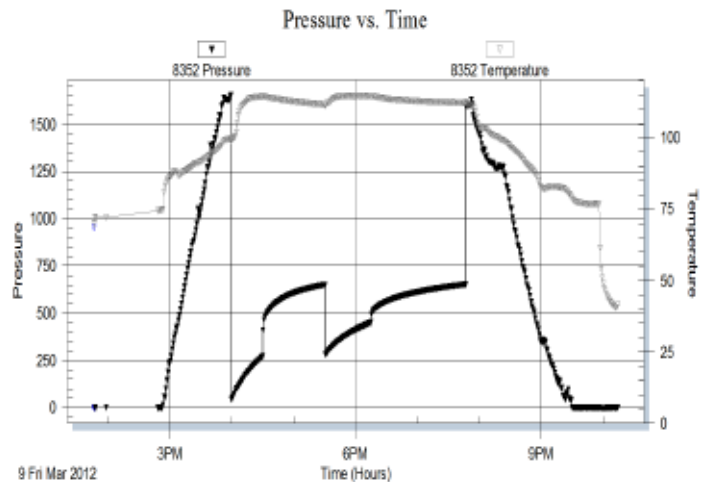


DST #2: 3,407' - 3,477' (LKC 'C-F') 30" - 60" - 45" - 90"

IF: Strong blow, BOB in 3 minutes
ISI: No blow back
FF: Strong blow, BOB in 6 minutes
FSI: No blow back

RECOVERY: 900' Total Fluid, consisting of:
900' Water (100% W) Chlorides: 70,000 ppm
Sampler: 1200 ml Water @ 80 psi

SIP: 651-652; FP: 44-272, 281-449; HP: 1645-1609
BHT: 112



DST #3: 3,650' - 3,684' (Arbuckle) 30" - 60" - 45" - 90"

IF: Fair blow, building to 3 inches

ISI: No blow back

FF: Fair blow, building to 3 inches

FSI: No blow back

RECOVERY: 70' Total Fluid, consisting of:

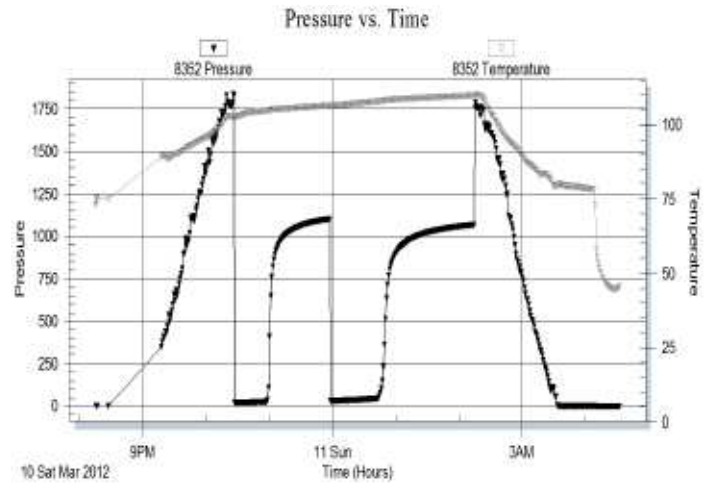
20' CO (100% O); Gravity: 26

50' MCO (60% O, 40% M)

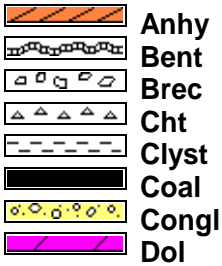
Sampler: 1200 ml O & 600 ml M @ 120 psi

SIP: 1100-1066; FP: 21-25, 30-42; HP: 1834-1784

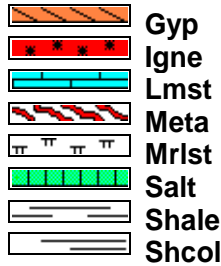
BHT: 109



ROCK TYPES



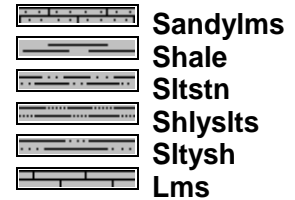
Anhy
Bent
Brec
Cht
Clyst
Coal
Congl
Dol



Gyp
Igne
Lmst
Meta
Mrlst
Salt
Shale
Shcol



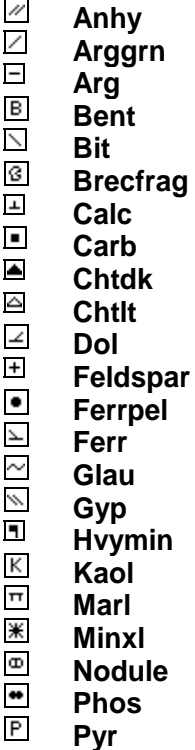
Shgy
Sltst
Ss
Till
Carb sh
Dol
Dtd
Gry sh



Sandylms
Shale
Sltstn
Shlyslts
Sltysch
Lms

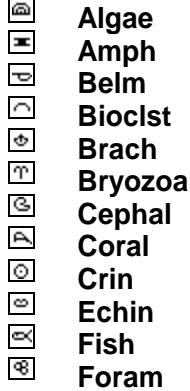
ACCESSORIES

MINERAL

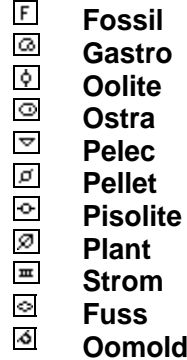


Salt
Sandy
Silt
Sil
Sulphur
Tuff
Chlorite
Dol
Sand
Sltly

FOSSIL

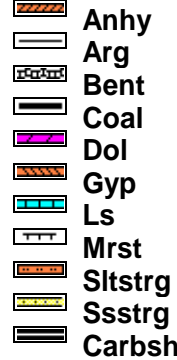


Algae
Amph
Belm
Bioclst
Brach
Bryozoa
Cephal
Coral
Crin
Echin
Fish
Foram



Fossil
Gastro
Oolite
Ostra
Pelec
Pellet
Pisolite
Plant
Strom
Fuss
Oomold

STRINGER

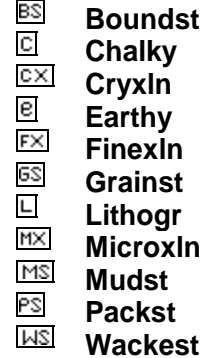


Anhy
Arg
Bent
Coal
Dol
Gyp
Ls
Mrst
Sltstrg
Ssstrg
Carbsh



Clystn
Dol
Grysh
Gryst
Lms
Sandylms
Sh
Sltstn

TEXTURE



Boundst
Chalky
Cryxln
Earthy
Finexln
Grainst
Lithogr
Microxln
Mudst
Packst
Wackest

OTHER SYMBOLS

POROSITY TYPE

- Earthy
- Fenest
- Fracture
- Inter
- Moldic
- Organic
- Pinpoint
- Vuggy

SORTING

- Well
- Moderate
- Poor

ROUNDING

- Rounded
- Subrnd
- Subang
- Angular

OIL SHOWS

- Even
- Spotted
- Ques
- Dead
- Gas show

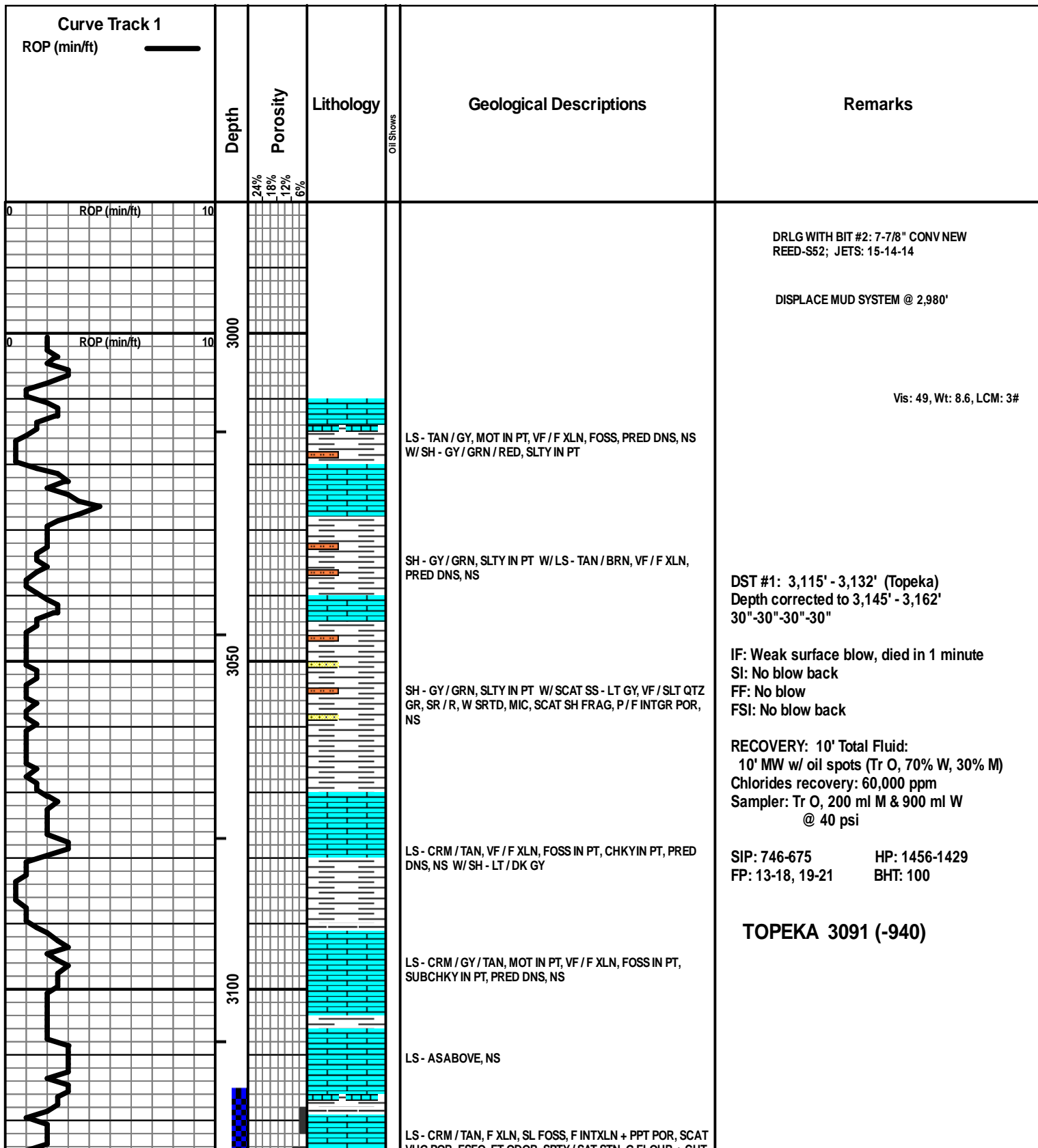
INTERVALS

- Core
- Dst

- Dst_1_b
- Dst_1_t
- Dst

EVENTS

- Rft
- Sidewall
- Conn



VUG POR, FSFO, FT ODOR, SPTY/SAT STN, G FLOUR + CUT, SCAT BARR POR

Vis: 66, Wt: 8.7, YP: 28,
GelS: 10/18, pH: 11.0, WL: 6.4,
Cht: 2100, Sol: 2.7, LCM: 2#

CFS @ 3132'

MEASUREMENT CORRECTION:
DRILL COLLAR (APPROX. 30' LONG)
FOUND IN THE STRING NOT LISTED ON PIPE TALLY -
PROBABLY INSERTED WHILE DRILLING THE
SURFACE CASING CEMENT PLUG. DEPTH
CORRECTED 30' DOWN HOLE.

LS - GY / TAN, VF / F XLN, FOSS IN PT, PRED DNS, NS W/ SH -
LT / DK GY

LS - TAN / CRM, VF / F XLN, SCAT M REXLN CALC, FOSS IN
PT, CHKY IN PT, PRED DNS, NS

LS - CRM / TAN, F XLN, FOSS, F / G INTXLN + PPT POR,
NSFO, NO ODOR, SCAT SPTY GILS STN

LS - CRM / LT GY / TAN, VF / F XLN, FOSS, OOL IN PT, SCAT P
INTXLN POR, PRED DNS, NS W/ SH - GY / GRN / BLK

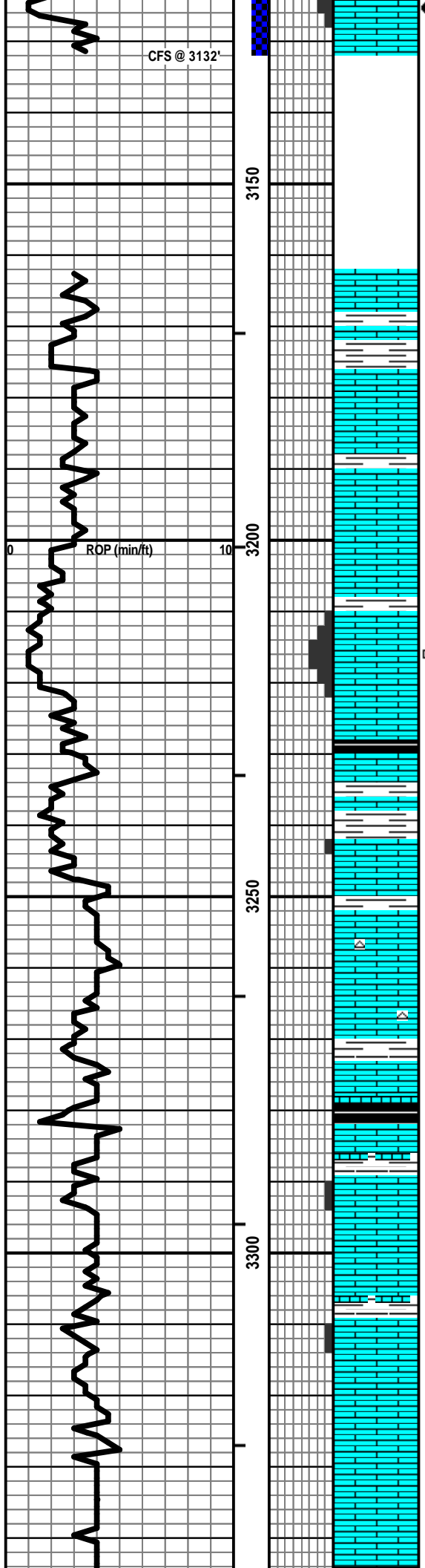
LS - CRM / LT GY, VF XLN, SCAT CHKY, PRED DNS, NS W/
SCAT CHT - LT GY / CRM

LS - CRM / TAN, VF / F XLN, FOSS IN PT, SCAT P INTXLN POR,
PRED DNS, TR FLKY DEAD OIL, NSFO, NO ODOR

LS - CRM / TAN, VF / F XLN, FOSS + OOL IN PT, CHKY IN PT,
SCAT P INTXLN + VUG POR, PRED DNS, SCAT ASPH, NSFO,
NO ODOR

LS - CRM / TAN, VF / F XLN, FOSS + OOL IN PT, CHKY IN PT,
PRED DNS, NS

Vis: 47, Wt: 9.0, LCM: 2#



HEEBNER 3345 (-1194)

TORONTO 3366 (-1215)

LANSING 3390 (-1239)

Vis: 53, Wt: 8.9, YP: 24,
GelS: 10/17, pH: 11.0, WL: 6.4,
Chl: 2200, Sol: 4.3, LCM: 2#

DST #2: 3,407' - 3,477' (LKC 'C-F')
30"-60"-45"-90"

IF: Strong blow, BOB in 3 minutes
SI: No blow back
FF: Strong blow, BOB in 6 minutes
FSI: No blow back

RECOVERY: 900' Total Fluid:
900' Water (100% W)
Chlorides recovery: 70,000 ppm
Sampler: 1200 ml Water @ 80 psi

SIP: 651-652 HP: 1645-1609
FP: 44-272, 281-449 BHT: 112

Vis: 48, Wt: 9.1, YP: 20,
GelS: 10/19, pH: 10.5, WL: 6.8,
Chl: 3000, Sol: 5.6, LCM: 1#

LS - ASABOVE W/SH - BLK / GY / GRN

LS - CRM / TAN / SCAT BRN, MOT IN PT, F / M XLN, FOSS,
PRED DNS, SCAT FLKY DEAD OIL, NSFO, NO ODOR

LS - CRM / TAN, VF / F XLN, FOSS IN PT, SUBCHKY IN PT,
PRED DNS, NS W/ CHT - GY / CRM / TAN / WHT

LS - CRM / LT GY, VF / F XLN, SL FOSS, PRED DNS, NS W/
CHT - ASABOVE

LS - CRM / TAN, F XLN, OOL + FOSS, P / SCAT F INTXLN +
MOLDIC POR, SL / F SFO, F ODOR, SPTY STN, F / G FLOUR +
CUT

LS - CRM / WHT / SCAT TAN, VF / CRYPTO XLN, FOSS IN PT,
SCAT CHKY, PRED DNS, NS

LS - CRM / LT GY, F XLN, FOSS, SCAT P / TR F INTXLN + VUG
POR, SSFO, V FT ODOR, SPTY STN, F / G FLOUR + CUT

LS - CRM, F XLN, FOSS, OOL IN PT, F INTPART + VUG POR,
FSFO, SCAT ASPH, G ODOR, SPTY / SAT BRN / BLK STN, G
FLOUR + CUT

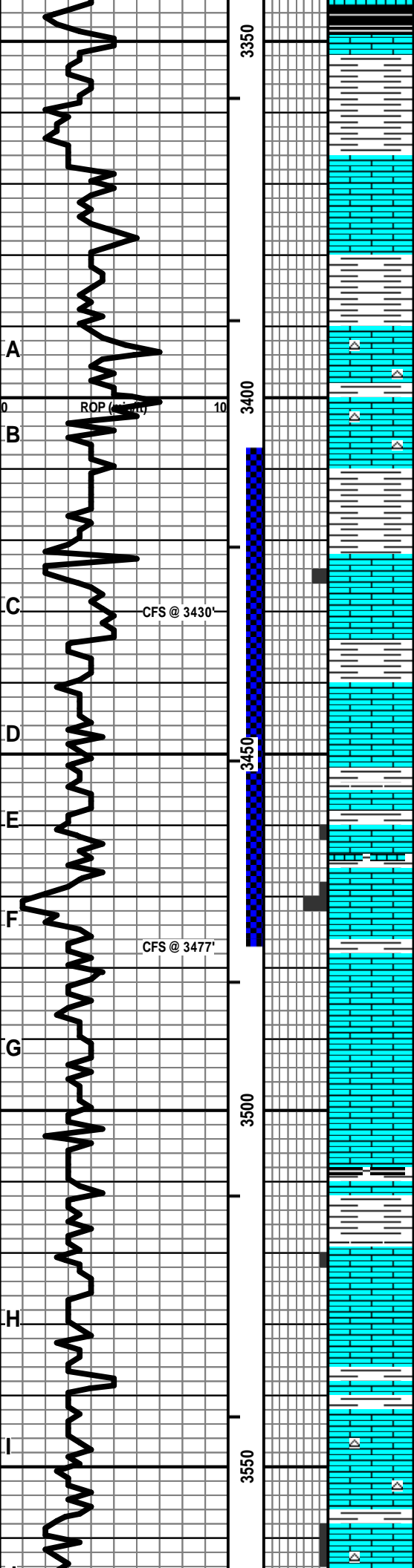
LS - CRM / WHT / SCAT TAN, VF / F XLN, SCAT CRYPTO XLN,
SL FOSS, CHKY IN PT, PRED DNS, NS

LS - ASABOVE W/SH - GY / BLK

LS - CRM / GY / TAN, VF / F XLN, OOL, FOSS IN PT, TR P
INTXLN POR, CHKY IN PT, PRED DNS, TR FO, NO ODOR, TR
SPTY STN

LS - CRM / WHT / SCAT TAN, VF / F XLN, SCAT FOSS + OOL,
TR VP INTXLN POR, TR BLK GILS STN, NSFO, NO ODOR W/
SCAT CHT - LT GY / WHT / TAN

LS - CRM / TAN, VF / F XLN, OOL IN PT, P / F OOM + INTXLN
POR TR VUG POR SSFO SL / F S ASPH MODAMT BARR



A

B

C

D

E

F

G

H

I

ROP @ 3407'

CFS @ 3430'

CFS @ 3477'

3350
3400
3450
3500
3550

POR, V FT ODOR, SPTY BLK / BRN STN, F / G FLOUR, P / G CUT W / SCAT CHT - WHT / LT GY

LS - CRM / WHT, VF / F XLN, OOL IN PT, TR P INTXN POR, PRED DNS, SCAT ASPH, NSFO, NO ODOR, SCAT SPTY BLK STN

LS - CRM / LT GY, VF / F XLN, SCAT CHKY, PRED DNS, NS

SH - GY / GRN / RED W / LS - CRM / TAN, VF / F XLN, DNS W / LS - ASABOVE

SH - GY / GRN / RED W / LS - CRM / TAN, MOT IN PT, VF / F XLN, SCAT M XLN, OOL, PRED DNS, NS

LS - CRM / TAN, F XLN, OOL IN PT, PRED DNS, NS W / SH - GY / GRN / RED

SH + LS - ASABOVE W / SCAT CHT - VARICOL, VIT W / SCAT SH - LT GRN

DOLO - TAN / CRM, VF / F XLN, RHOMB IN PT, TR SUCR, AREN IN PT, F INTXN POR IN PT, TR VUG POR, F / G SFO IN PT, G ODOR, SPTY / SAT STN, G FLOUR + CUT, PPOR / DNS IN PT

DOLO - TAN / CRM / SCAT LT GY, F XLN, TR M / C XLN, RHOMB IN PT, SUCR IN PT, SL AREN, F INTXN POR IN PT, SCAT VUG POR, F / G SFO IN PT, G ODOR, TR ASPH, SPTY / SAT STN, G FLOUR + CUT, PPOR / DNS IN PT W / SCAT CHT - LT GY / TAN W / SCAT SH - GY / GRN

DOLO - CRM / TAN / SCAT LT GY, F / M XLN, RHOMB IN PT, SL AREN, F / G INTXN + VUG POR IN PT, F / G SFO, SCAT ASPH, SCAT BARR POR, G ODOR, SPTY / SAT STN, PRED G FLOUR + CUT, PPOR / DNS IN PT W / SCAT CHT - LT GY / TAN

DOLO - CRM / TAN / LT GY, VF / M XLN, RHOMB IN PT, SL AREN, F / G INTXN POR, SCAT VUG POR, SSFO + ASPH, MOD AMT BARR POR, FT ODOR, SCAT SPTY / TR SAT STN, P POR / DNS IN PT W / SCAT CHT - LT GY / TAN

DOLO - CRM / TAN / LT GY, VF / M XLN, RHOMB IN PT, MOD AREN IN PT, F / G INTXN POR, SCAT VUG POR, PRED NS, NO ODOR W / SCAT CHT - LT GY / TAN

DOLO - CRM / TAN / LT GY, VF / M XLN, RHOMB IN PT, MOD AREN IN PT, F / G INTXN POR, SCAT VUG POR, PRED NS, NO ODOR W / SCAT CHT - LT GY / TAN

BASE OF KC 3614 (-1463)

DST #3: 3,650' - 3,684' (Arbuckle)
30"-60"-45"-90"

IF: Fair blow, building to 3 inches
SI: No blow back
FF: Fair blow, building to 3 inches
FSI: No blow back

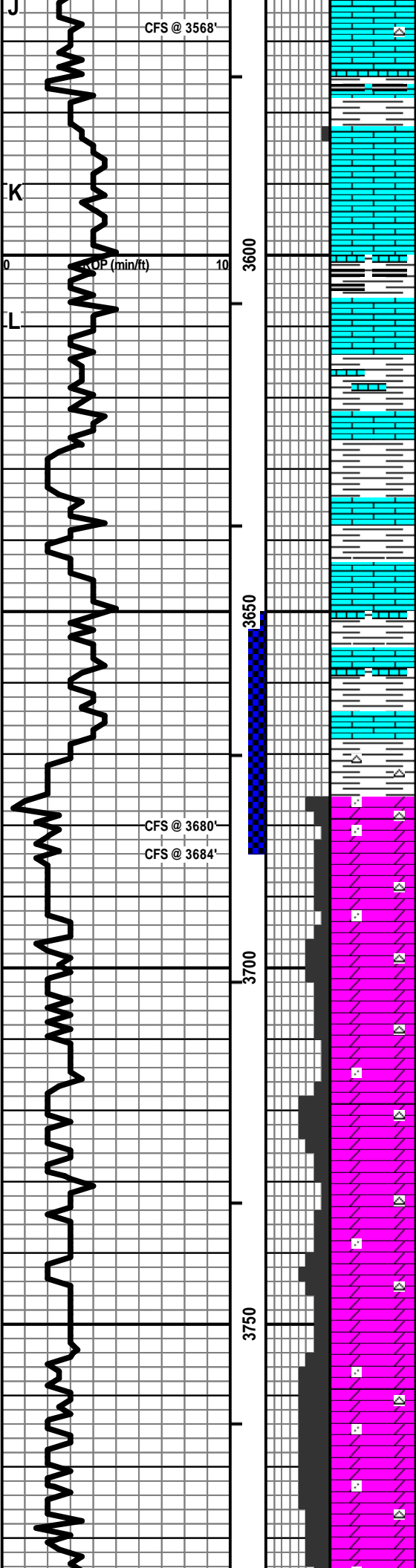
RECOVERY: 70' Total Fluid:
20' CO (100% O); Gravity: 26
50' MCO (60% O, 40% M)
Sampler: 1200 ml O & 600 ml M @ 120 psi

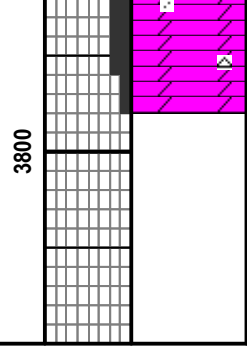
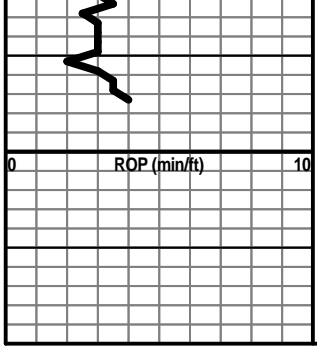
SIP: 1100-1066 HP: 1834-1784
FP: 21-25, 30-42 BHT: 109

ARBUCKLE 3676 (-1525)

Vis: 54, Wt: 9.1, YP: 21,
GeIS: 9/20, pH: 10.5, WL: 7.2,
ChI: 2800, Sol: 5.6, LCM: 1#

Vis: 52, Wt: 9.2, LCM: 4#





DOLO - CRM / TAN / LT GY, VF / M XLN, RHOMB IN PT, SL
 AREN IN PT, F / G INTXLN POR, SCAT VUG POR, PRED NS,
 NO ODOR W/ SCAT CHT - LT GY / TAN

Vis: 51, Wt: 9.2, LCM: 4#

TOTAL DEPTH 3795 (-1644)