



DIGITAL LOG (785) 625-3858

Dual Compensated Porosity Log

15-051-26249-00-00

API No. _____
 Company Klabzuba Oil & Gas, Inc.
 Well Jensen Trust #34-9-11-19
 Field Solomon
 County Ellis
 State Kansas
 Location 2260' FSL & 720' FEL
 Sec: 34 Twp: 11S Rge: 19W
 Permanent Datum Ground Level Elevation 2143
 Log Measured From Kelly Bushing 8 Ft. Above Perm. Datum
 Drilling Measured From Kelly Bushing
 Date 3/11/2012
 Run Number One
 Type Log CNL / CDL
 Depth Driller 3795
 Depth Logger 3794
 Bottom Logged Interval 3773
 Top Logged Interval 3000
 Type Fluid In Hole Chemical
 Salinity, PPM CL 2800
 Density 9.1
 Level Full
 Max. Rec. Temp. F 114
 Operating Rig Time 5 Hours
 Equipment -- Location 10 Hays
 Recorded By D. Schmidt
 Witnessed By Dave Goldak

Other Services
 DIL
 MEI/BHCS

Elevation
 K.B. 2151
 D.F. _____
 G.L. 2143

Borehole Record				Casing Record			
Run No.	Bit	From	To	Size	Wgt.	From	To
1	12.25	00	263	8.625	24#	00	263
2	7.875	263	3795				

<<< Fold Here >>>

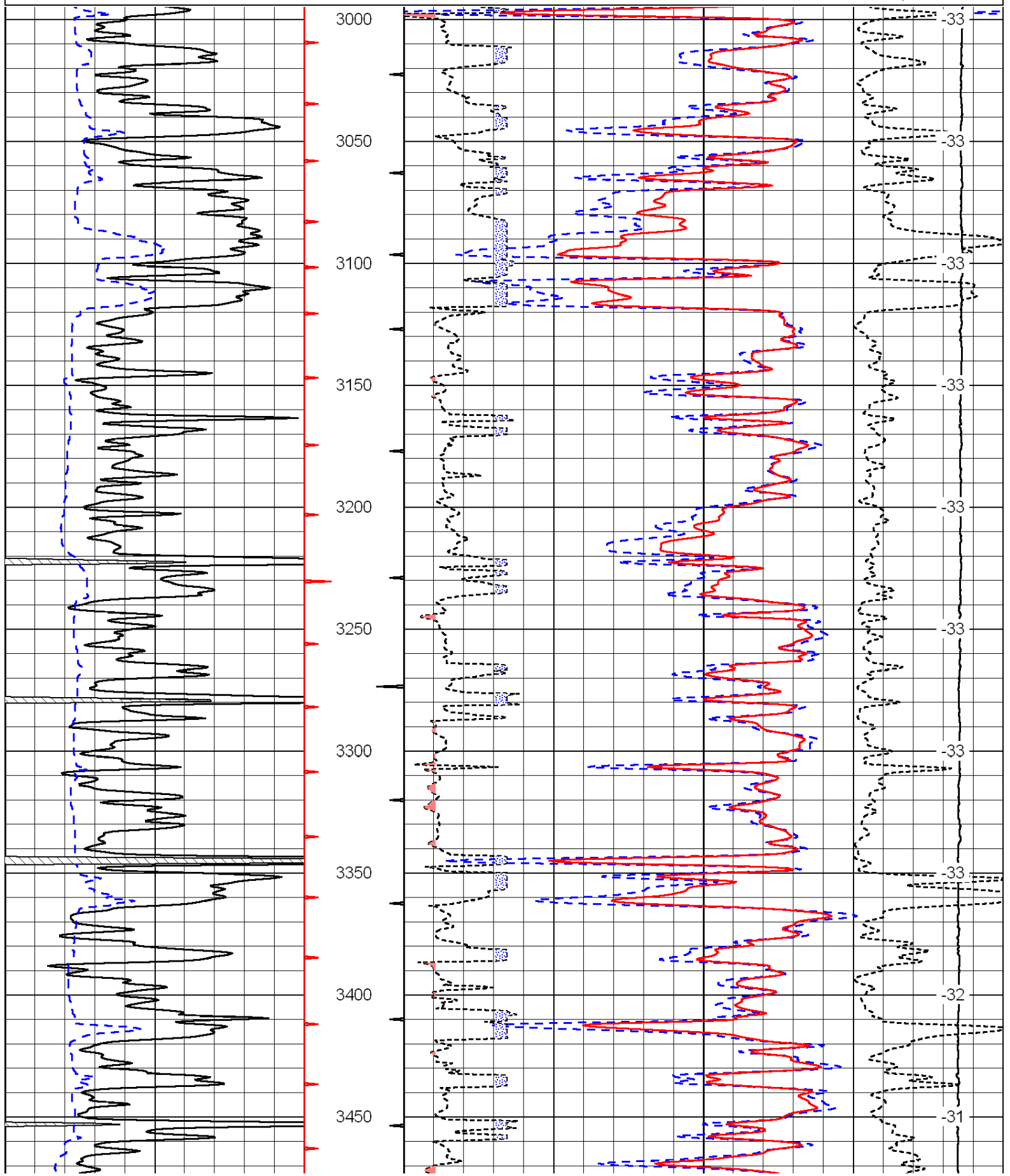
All interpretations are opinions based on inferences from electrical or other measurements and we cannot and do not guarantee the accuracy or correctness of any interpretation, and we shall not, except in the case of gross or willful negligence on our part, be liable or responsible for any loss, costs, damages, or expenses incurred or sustained by anyone resulting from any interpretation made by any of our officers, agents or employees. These interpretations are also subject to our general terms and conditions set out in our current Price Schedule.

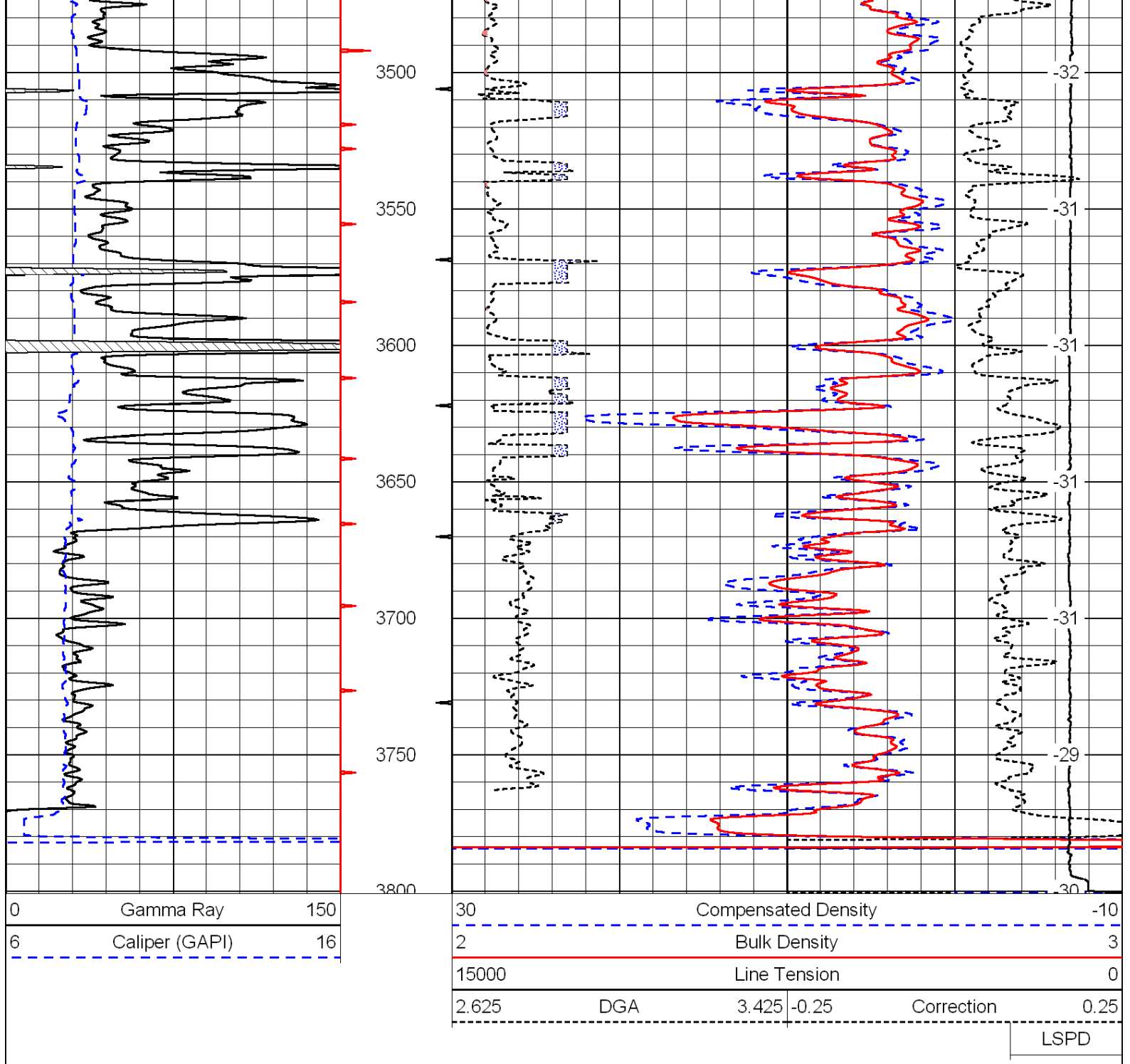
Comments

Thank you for using Log-Tech, Inc.
 (785) 625-3858
 Hays,
 N to Buckeye, 4 W,
 3 N to Homestead, 1 W to Rd 200,
 1/2 N, W into

0	Gamma Ray	150
6	Caliper (GAPI)	16

30	Compensated Density		-10
2	Bulk Density		3
15000	Line Tension		0
2.625	DGA	3.425	-0.25
		Correction	0.25
			LSPD





Database File: c:\warrior\data\klabzuba_jensen trust #34-9-11-19\klabzuba_jenson34-9-11-19hd.db
 Dataset Pathname: dil/klab
 Presentation Format: cndlspec
 Dataset Creation: Sun Mar 11 22:29:01 2012
 Charted by: Depth in Feet scaled 1:240

