



Dual Induction Log

DIGITAL LOG (785) 625-3858

15-051-26249-00-00

API No.

Company **Klabzuba Oil & Gas, Inc.**
 Well **Jensen Trust #34-9-11-19**
 Field **Solomon**
 County **Ellis** State **Kansas**

Other Services
 CNL/CDL
 MEL/BHCS

Location **2260' FSL & 720' FEL**

Elevation

Permanent Datum **Ground Level** Elevation **2143**
 Log Measured From **Kelly Bushing** 8 Ft. Above Perm. Datum
 Drilling Measured From **Kelly Bushing**

K.B. 2151
 D.F. 2143
 G.L. 2143

Date	3/11/2012	
Run Number	One	
Depth Driller	3795	
Depth Logger	3794	
Bottom Logged Interval	3793	
Top Log Interval	250	
Casing Driller	8.625 @ 263	
Casing Logger	262	
Bit Size	7.875	
Type Fluid in Hole	Chemical	
Salinity, ppm CL	2800	
Density / Viscosity	9.1 54	
pH / Fluid Loss	10.5 7.2	
Source of Sample	Flowline	
Rm @ Meas. Temp	1.30 @ 60	
Rmf @ Meas. Temp	0.98 @ 60	
Rmc @ Meas. Temp	1.76 @ 60	
Source of Rmf / Rmc	Charts	
Rm @ BHT	0.68 @ 114	
Operating Rig Time	5 Hours	
Max Rec. Temp. F	114	
Equipment Number	10	
Location	Hays	
Recorded By	D. Schmidt	
Witnessed By	Dave Goldak	

<<< Fold Here >>>

All interpretations are opinions based on inferences from electrical or other measurements and we cannot and do not guarantee the accuracy or correctness of any interpretation, and we shall not, except in the case of gross or willful negligence on our part, be liable or responsible for any loss, costs, damages, or expenses incurred or sustained by anyone resulting from any interpretation made by any of our officers, agents or employees. These interpretations are also subject to our general terms and conditions set out in our current Price Schedule.

Comments

Thank you for using Log-Tech, Inc.
 (785) 625-3858
 Hays,
 N to Buckeye, 4 W,
 3 N to Homestead, 1 W to Rd 200,
 1/2 N, W into

Database File: c:\warrior\data\klabzuba_jensen trust #34-9-11-19\klabzuba_jenson34-9-11-19hd.db
 Dataset Pathname: dil/klab
 Presentation Format: dil2in
 Dataset Creation: Sun Mar 11 22:29:01 2012
 Charted by: Depth in Feet scaled 1:600

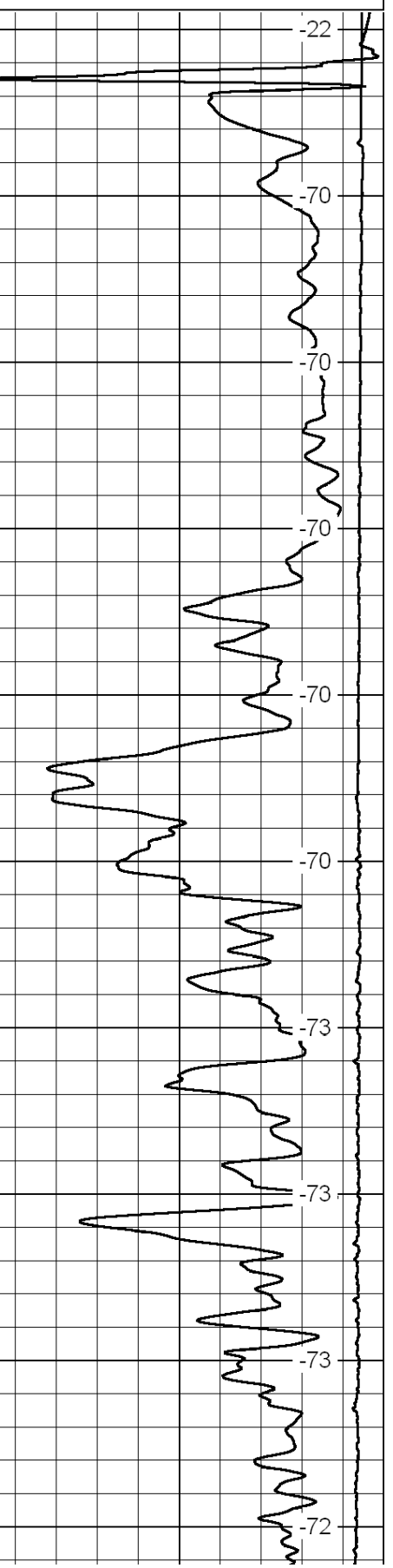
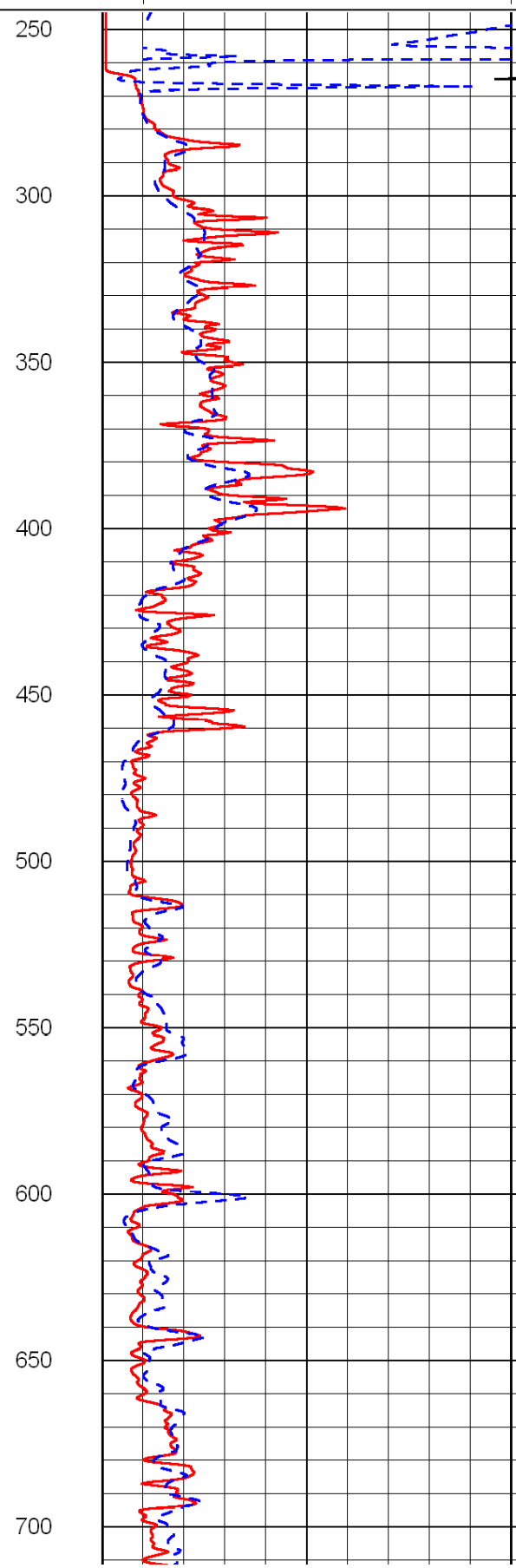
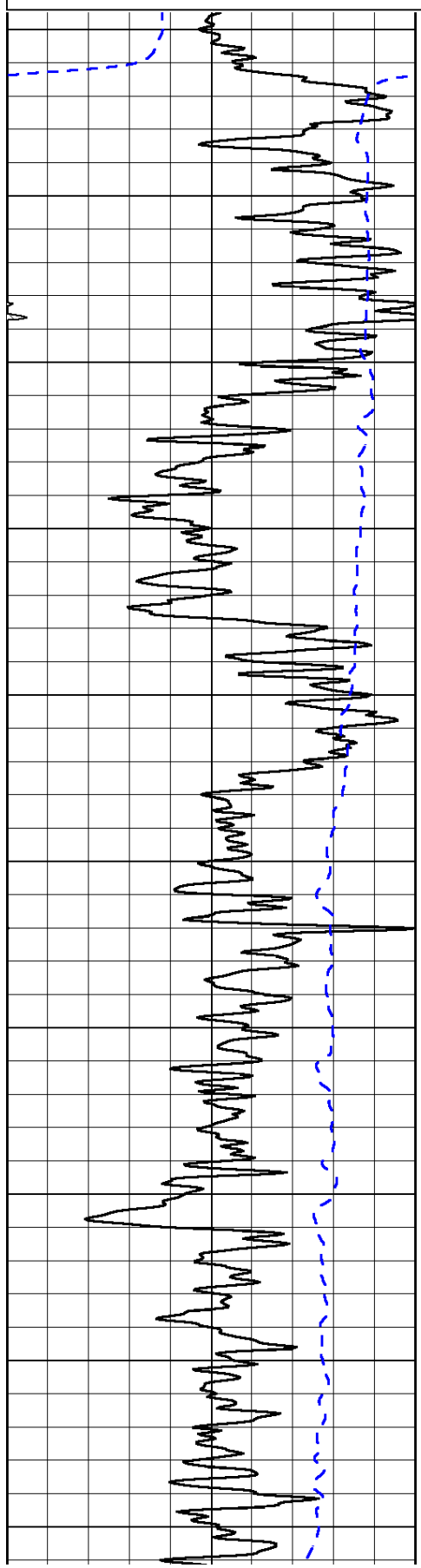
0	Gamma Ray	150
-200	SP (mV)	0

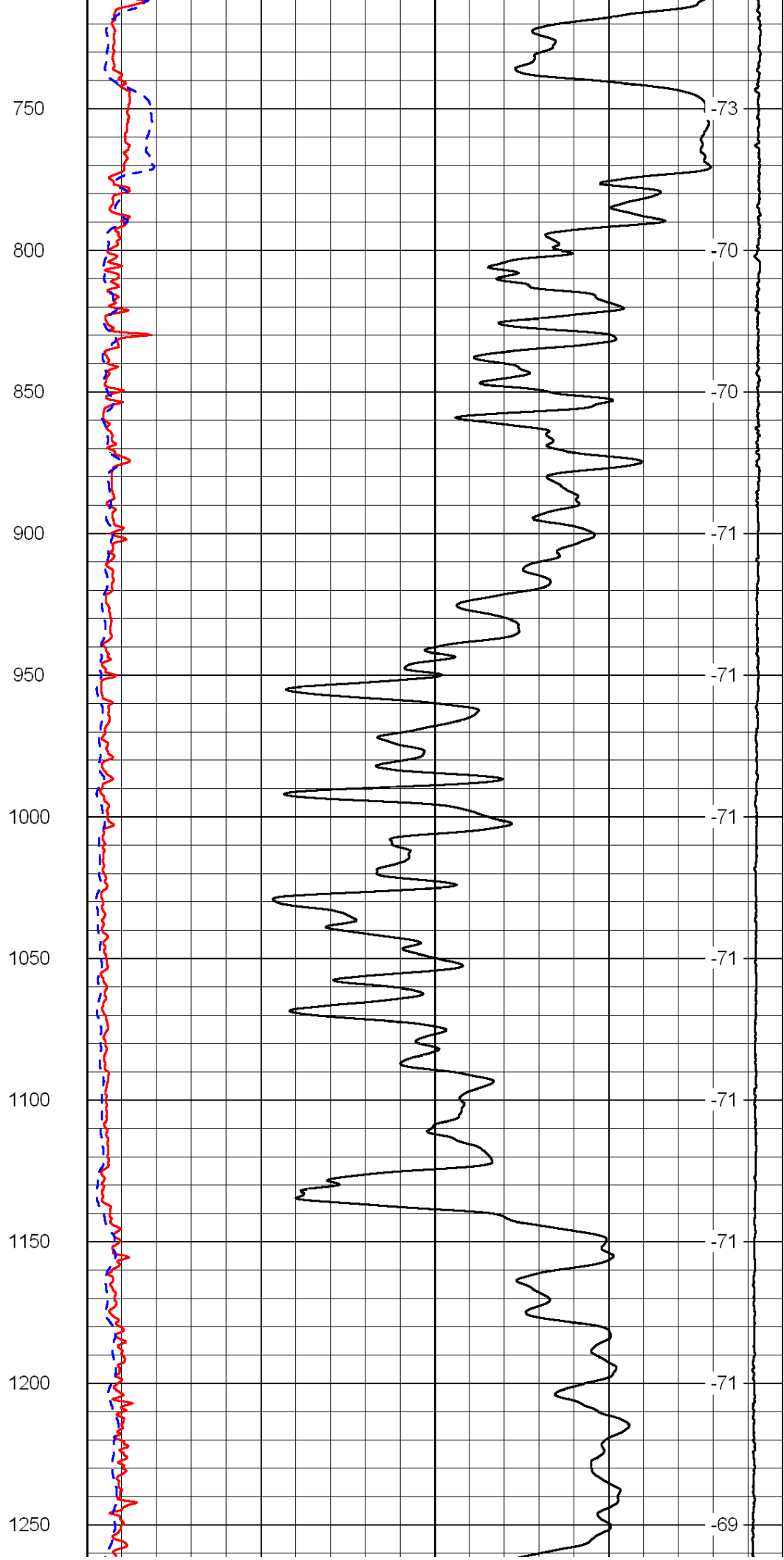
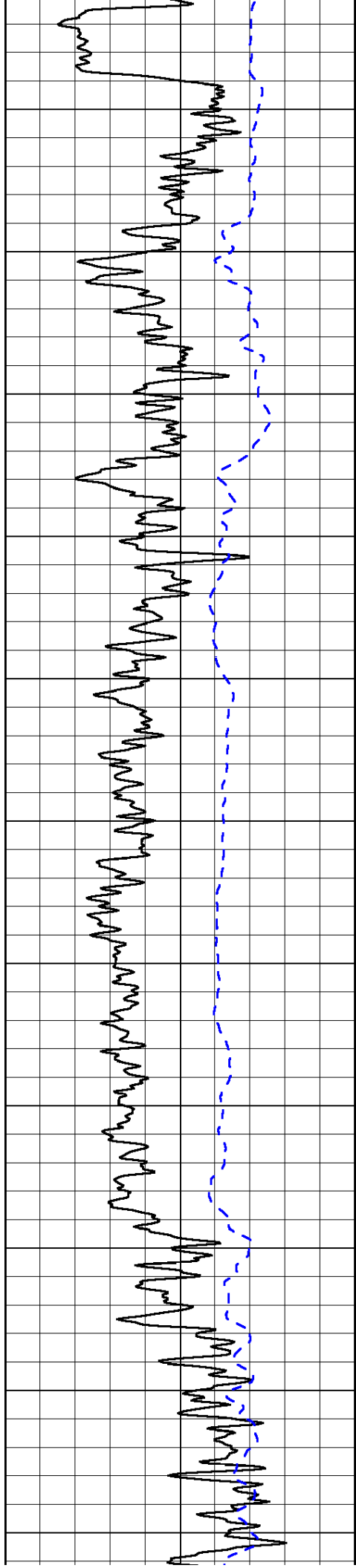
0	Shallow Resistivity	50
0	Deep Resistivity	50

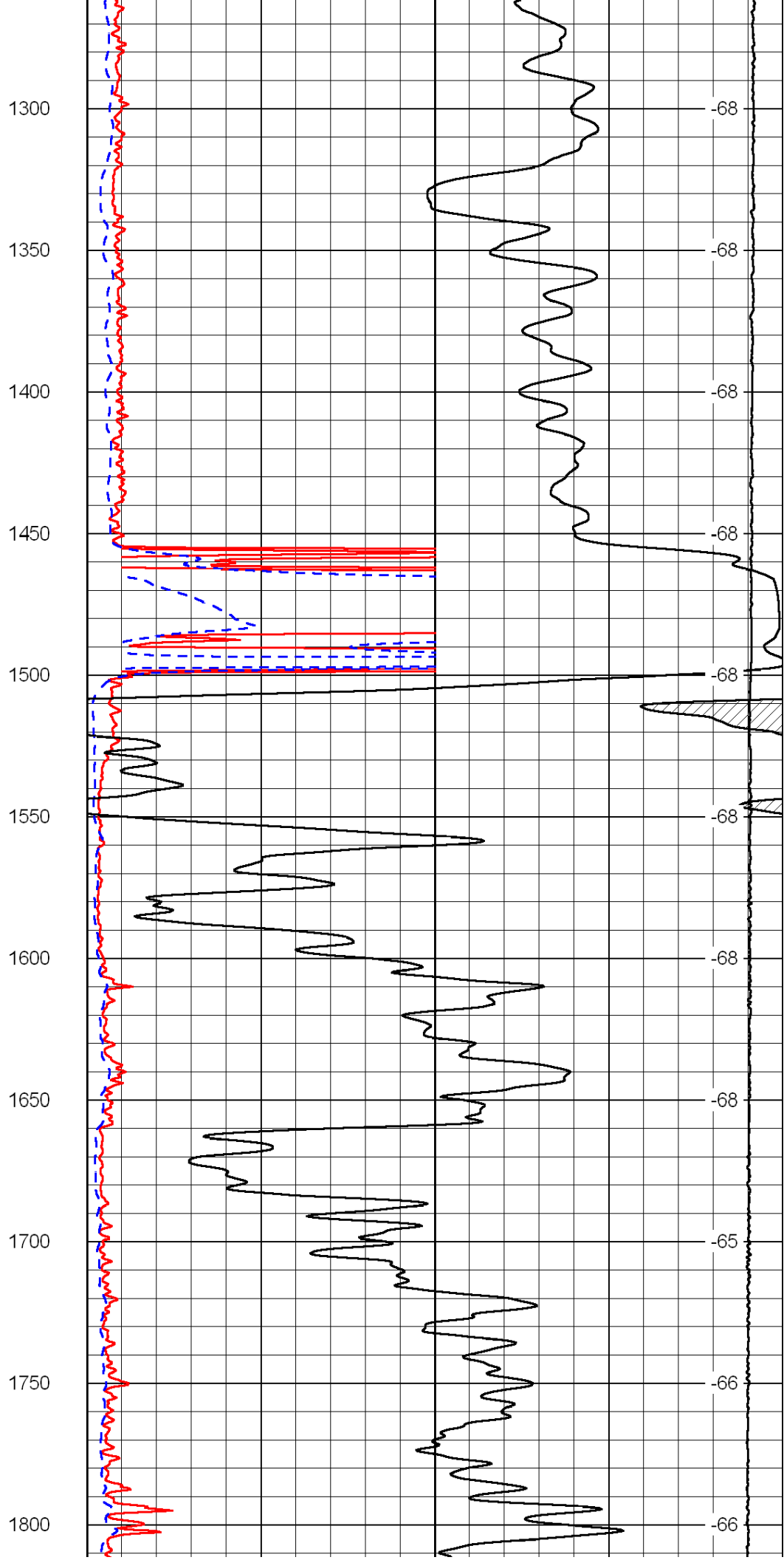
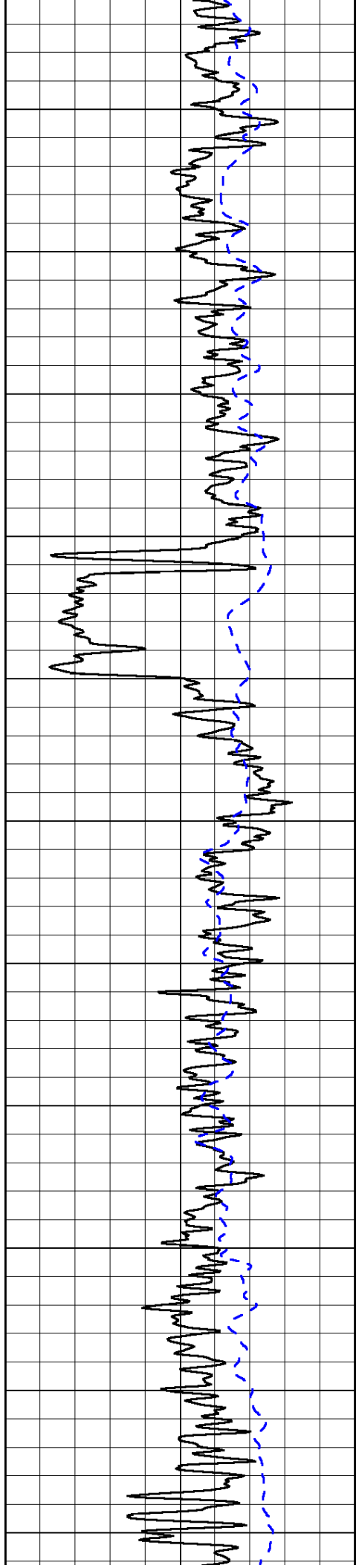
LSPD

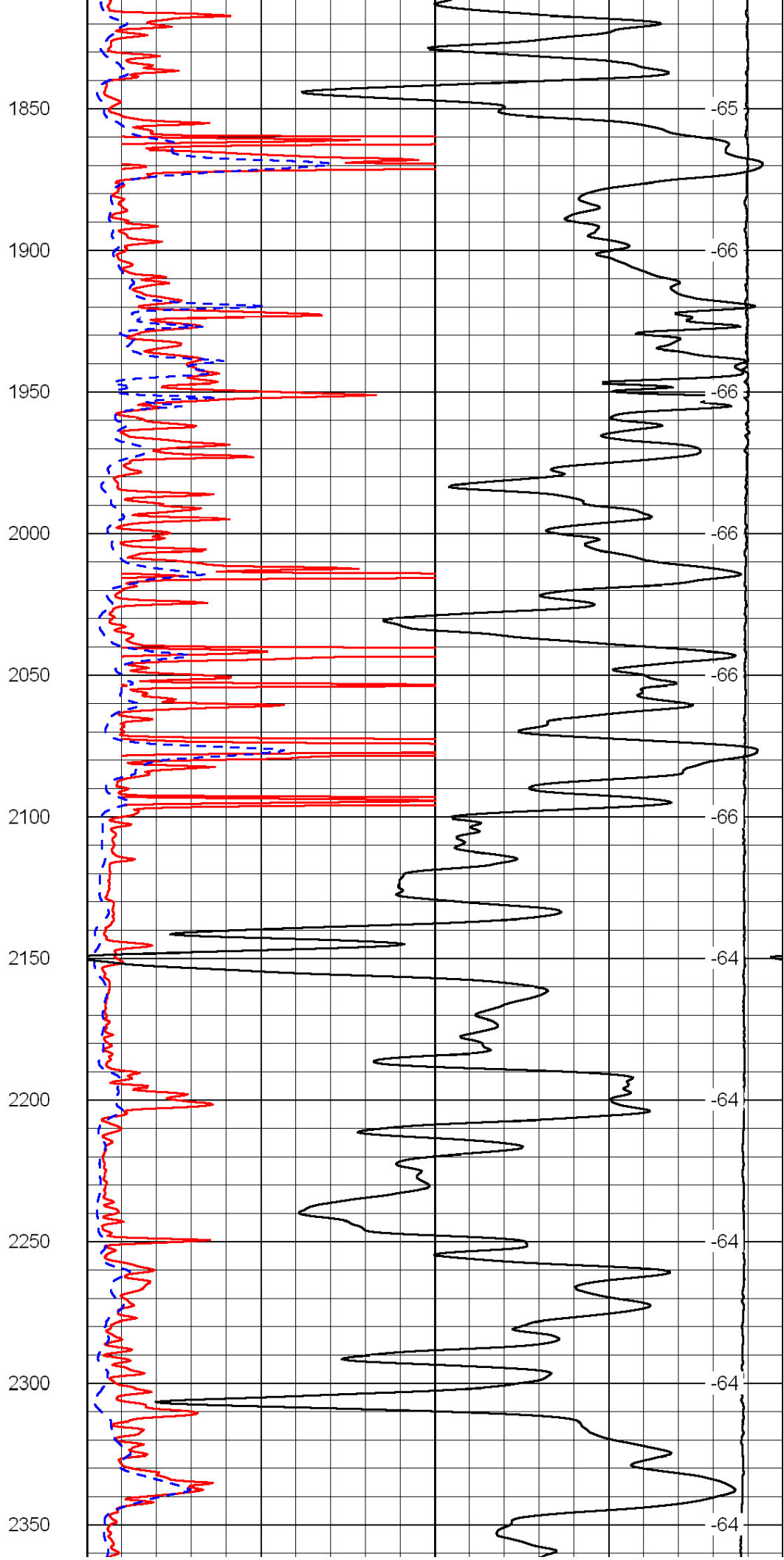
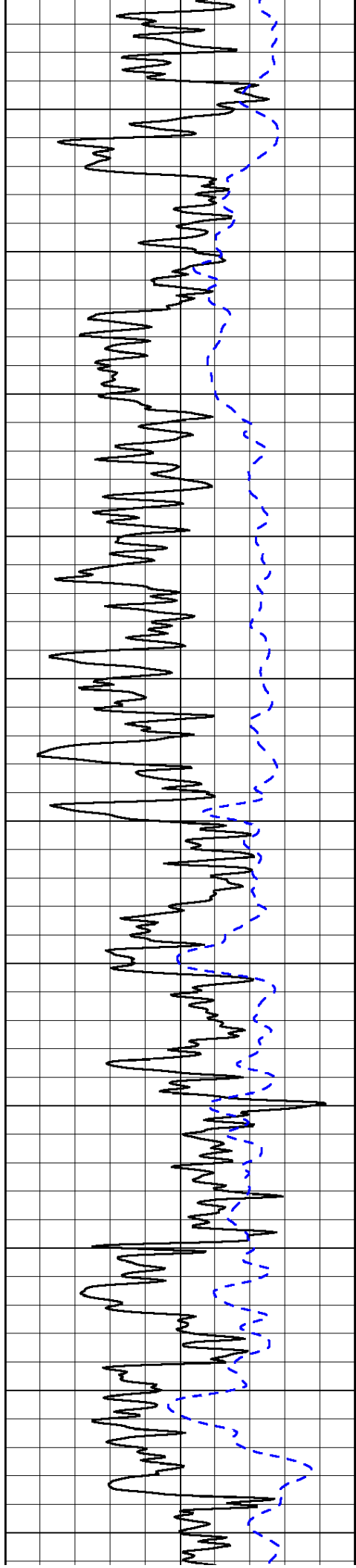
1000	Conductivity	0
15000	Line Tension	0

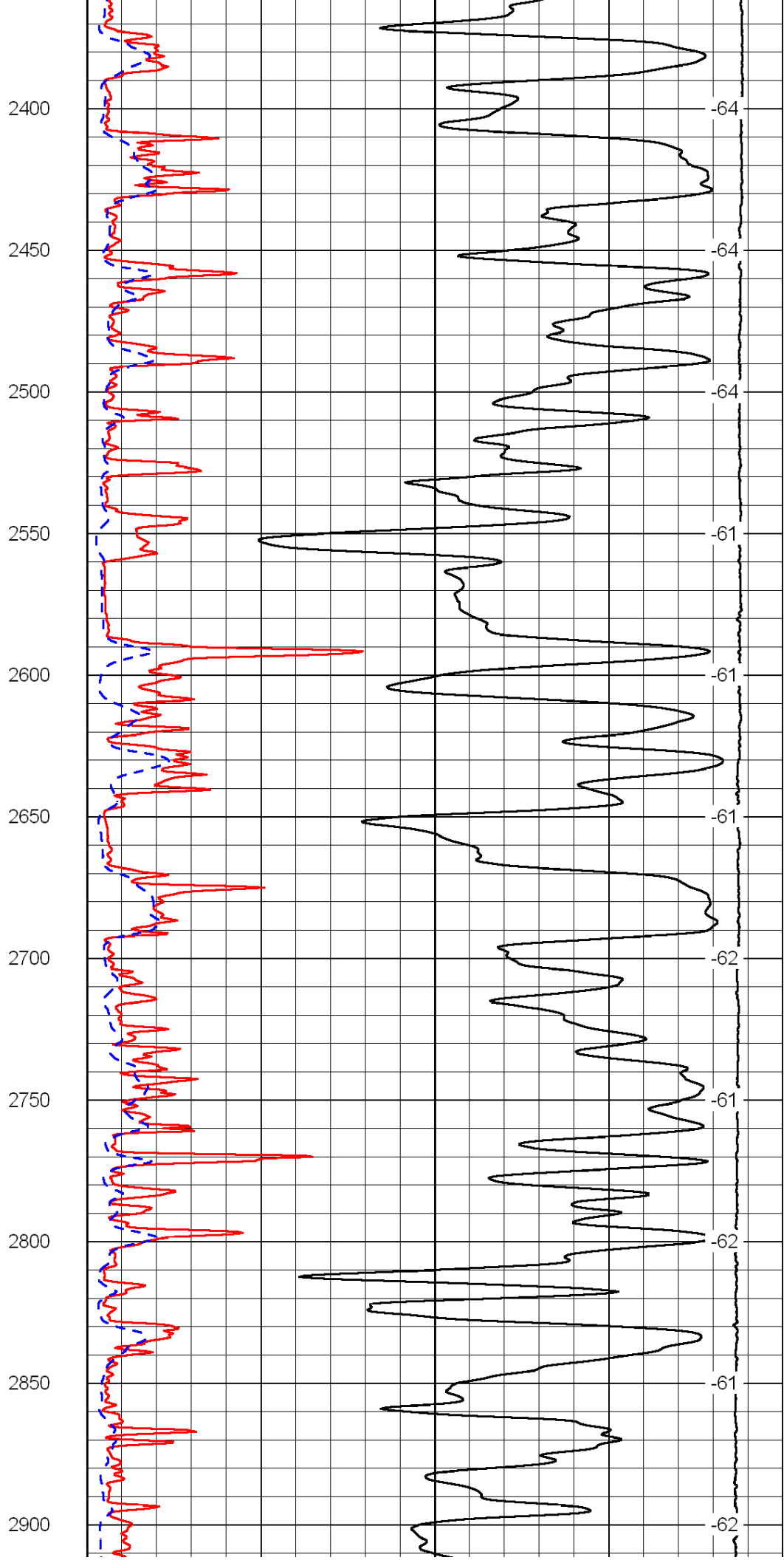
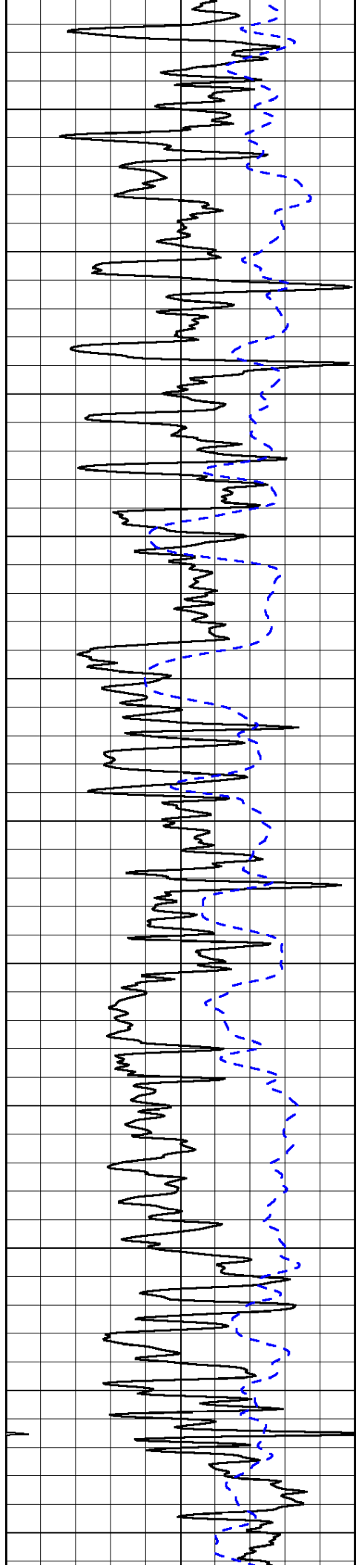
50	Shallow Resistivity	500
50	Deep Resistivity	500

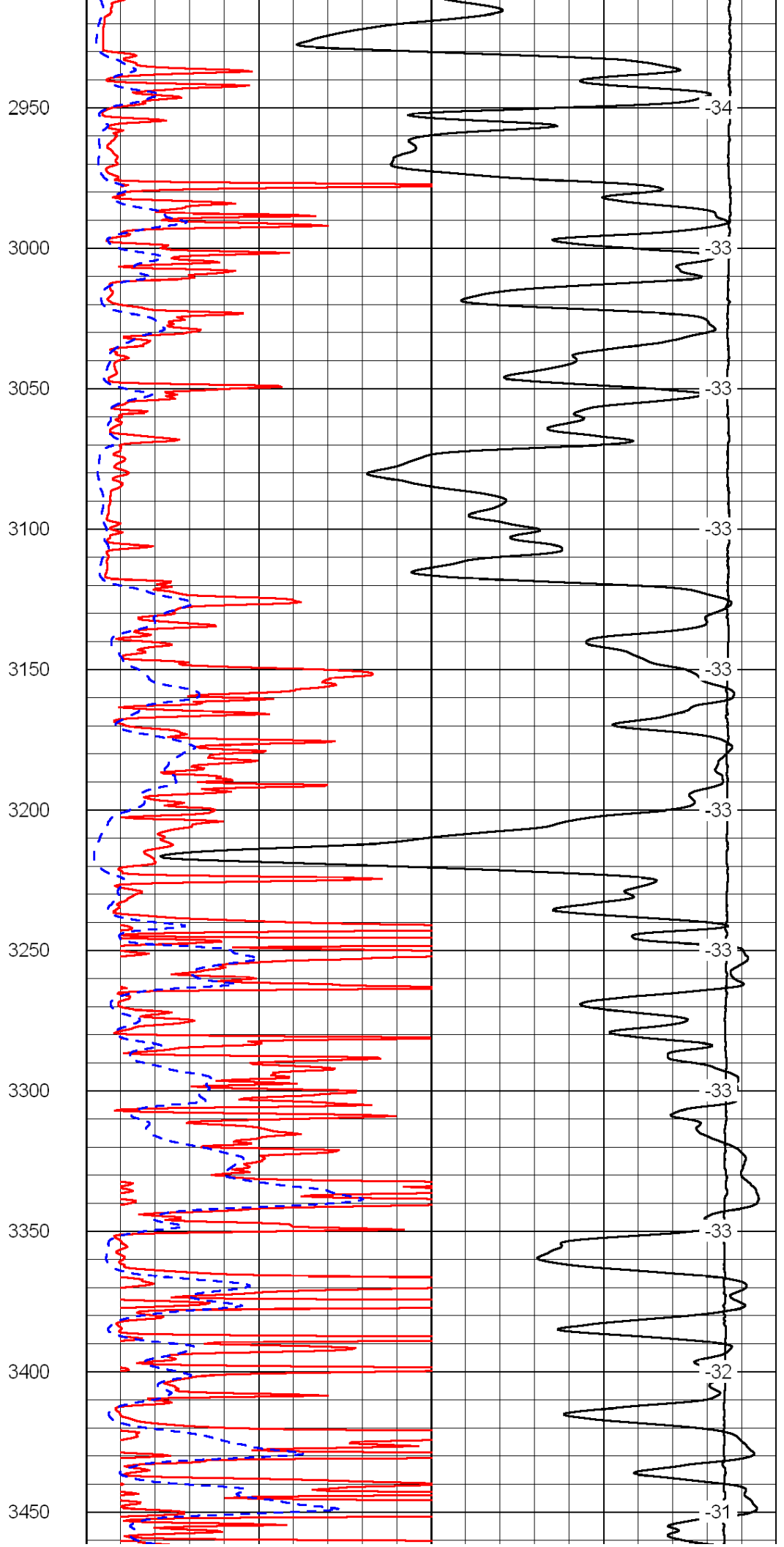
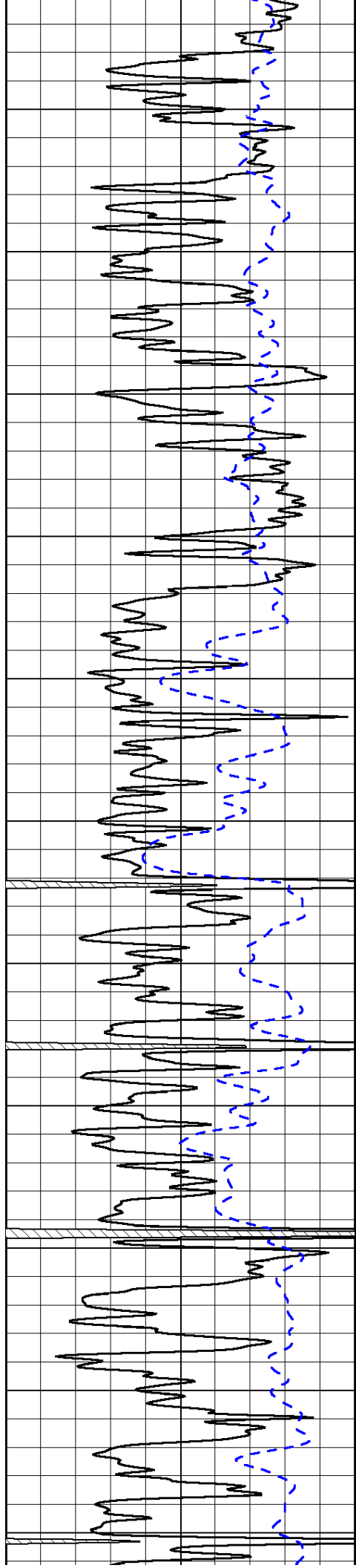


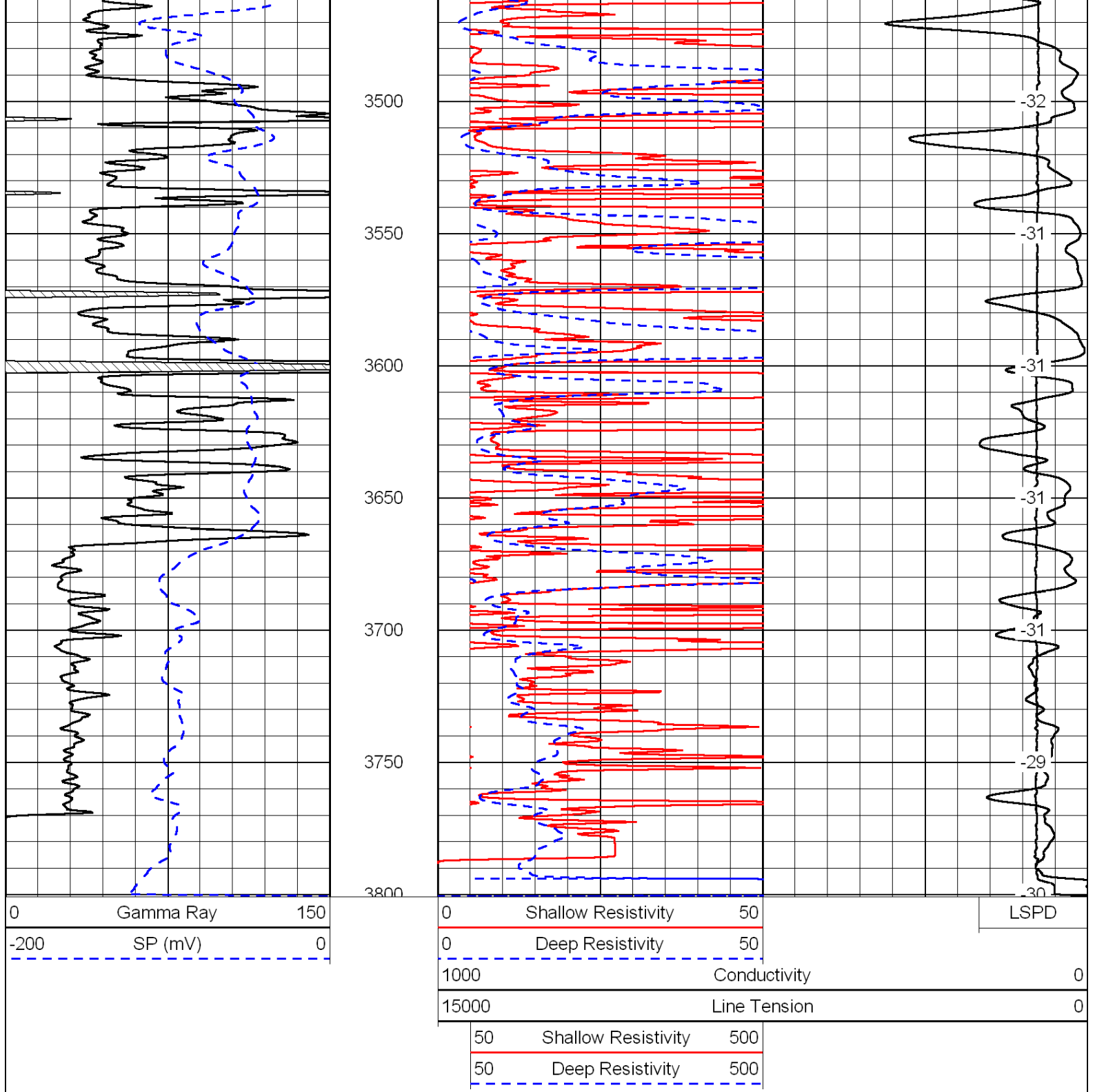




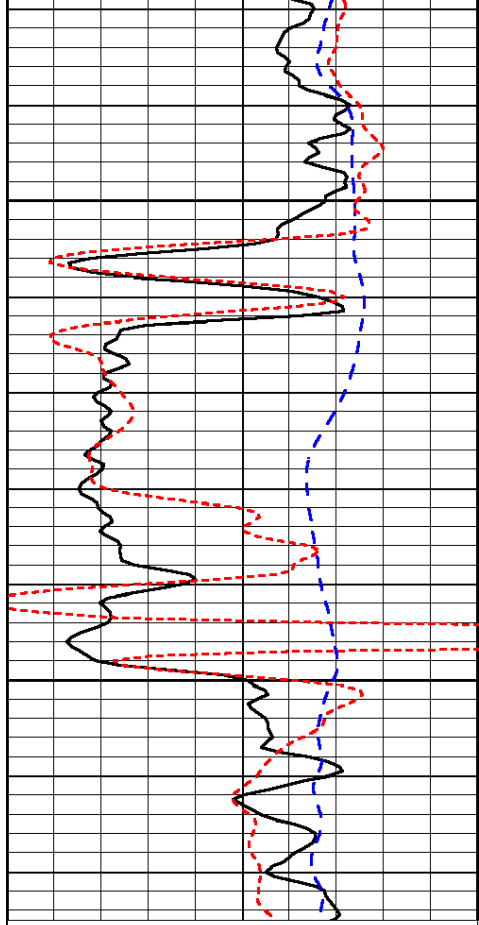








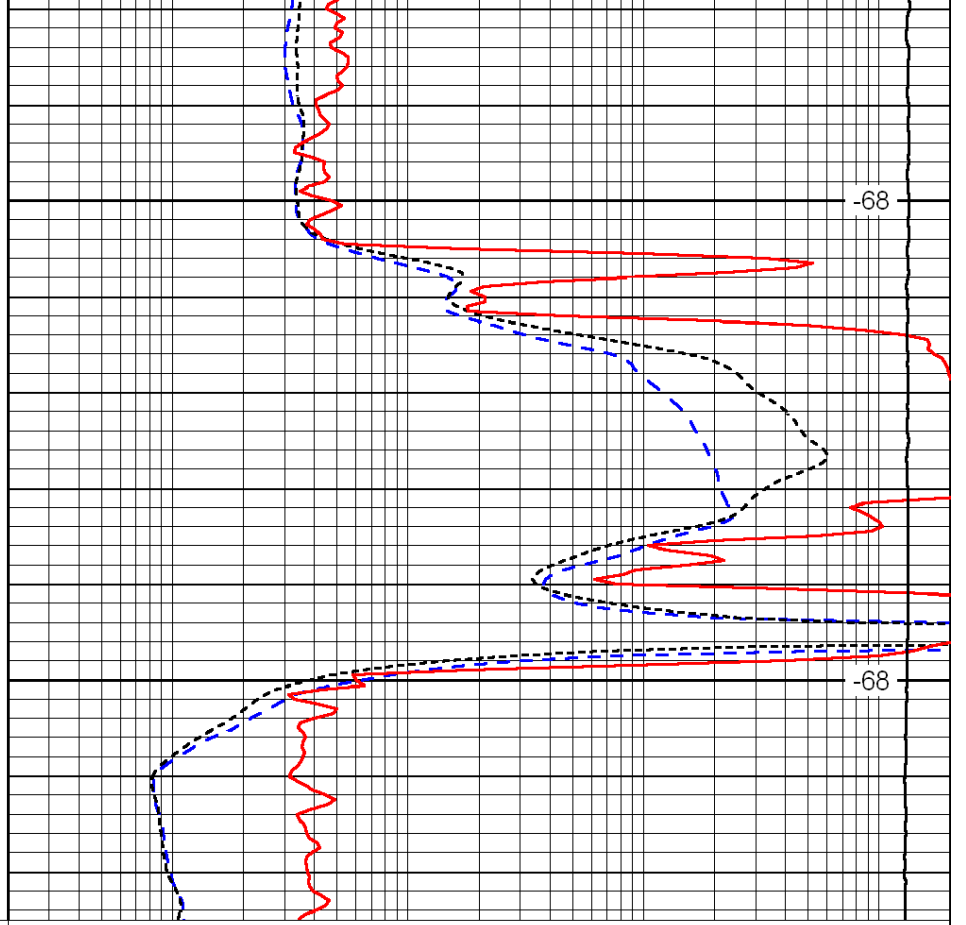
Database File:	c:\warrior\data\klabzuba_jensen trust #34-9-11-19\klabzuba_jenson34-9-11-19hd.db				
Dataset Pathname:	dil/klab				
Presentation Format:	dil				
Dataset Creation:	Sun Mar 11 22:29:01 2012				
Charted by:	Depth in Feet scaled 1:240				
0	Gamma Ray	150	0.2	Deep Resistivity	2000
-200	SP (mV)	0	0.2	Medium Resistivity	2000
-160	Rxo / Rt	40	0.2	Shallow Resistivity	2000
			15000	Line Tension	0
				LSPD	



0	Gamma Ray	150
-200	SP (mV)	0
-160	Rxo / Rt	40

1450

1500



0.2	Deep Resistivity	2000
0.2	Medium Resistivity	2000
0.2	Shallow Resistivity	2000
15000	Line Tension	0

-68

-68

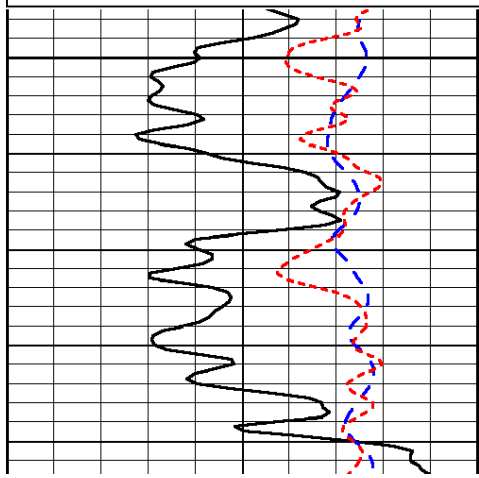
LSPD

Database File: c:\warrior\data\klabzuba_jensen trust #34-9-11-19\klabzuba_jenson34-9-11-19hd.db
 Dataset Pathname: dil/klab
 Presentation Format: dil
 Dataset Creation: Sun Mar 11 22:29:01 2012
 Charted by: Depth in Feet scaled 1:240

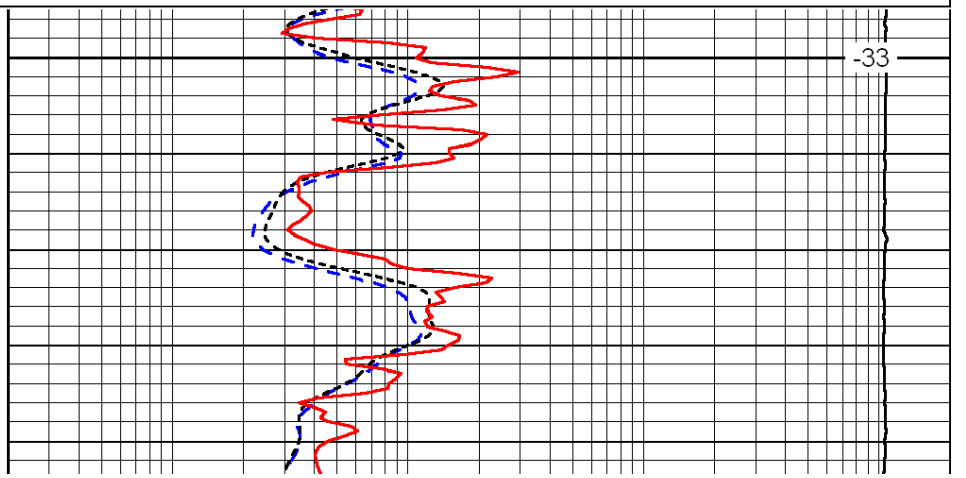
0	Gamma Ray	150
-200	SP (mV)	0
-160	Rxo / Rt	40

0.2	Deep Resistivity	2000
0.2	Medium Resistivity	2000
0.2	Shallow Resistivity	2000
15000	Line Tension	0

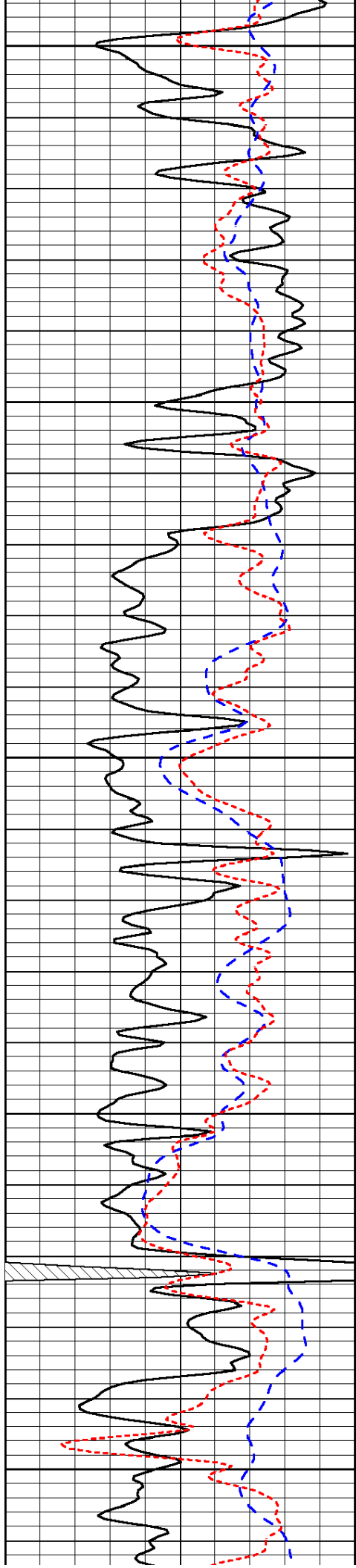
LSPD



3000



-33



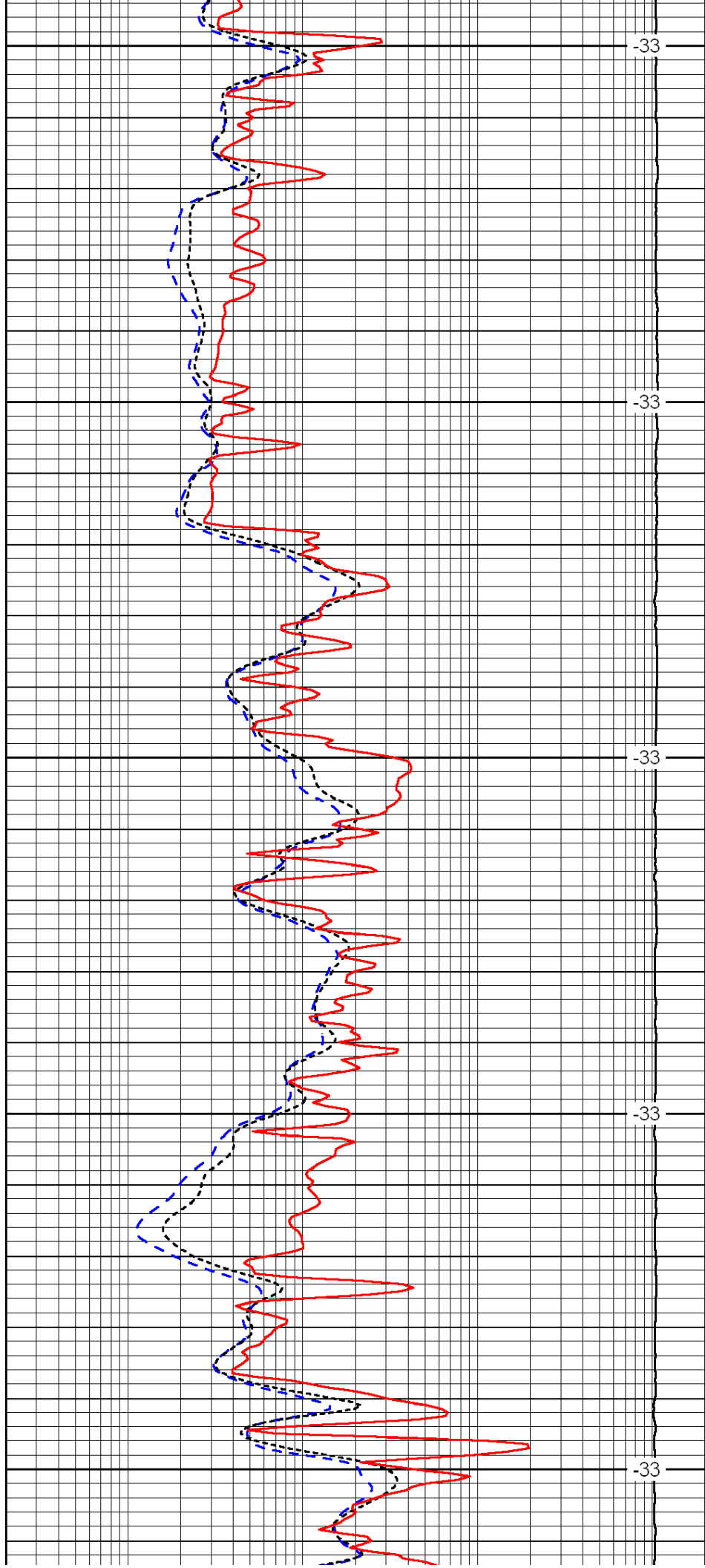
3050

3100

3150

3200

3250



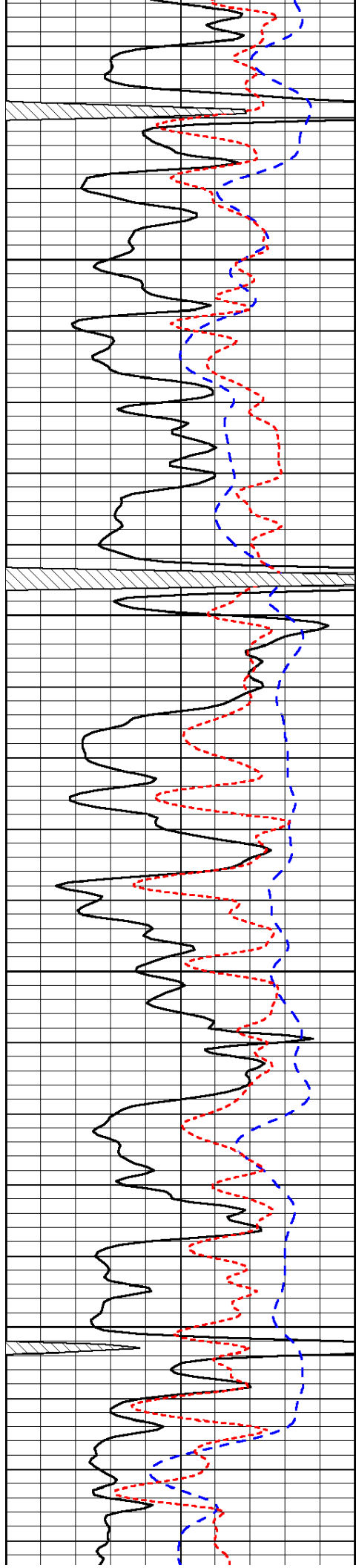
-33

-33

-33

-33

-33

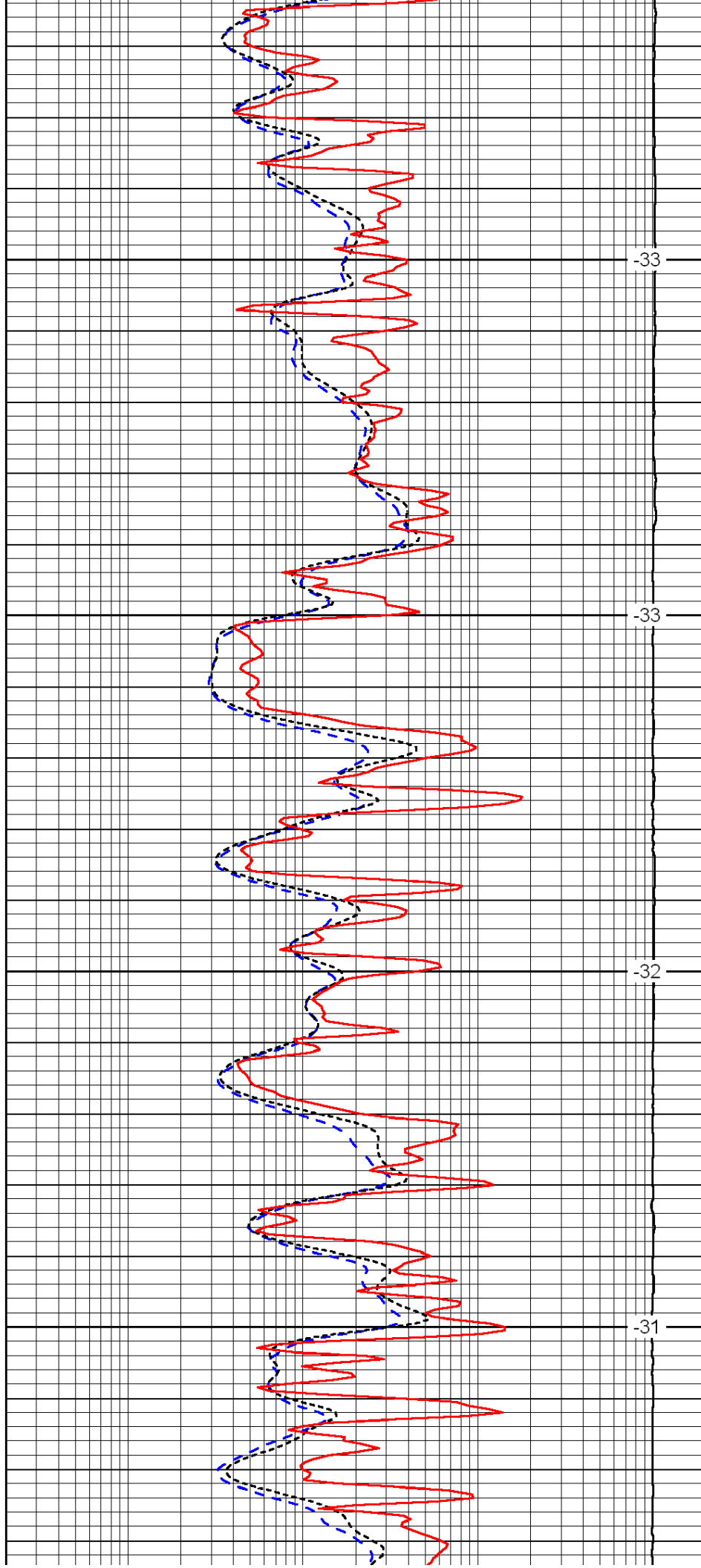


3300

3350

3400

3450

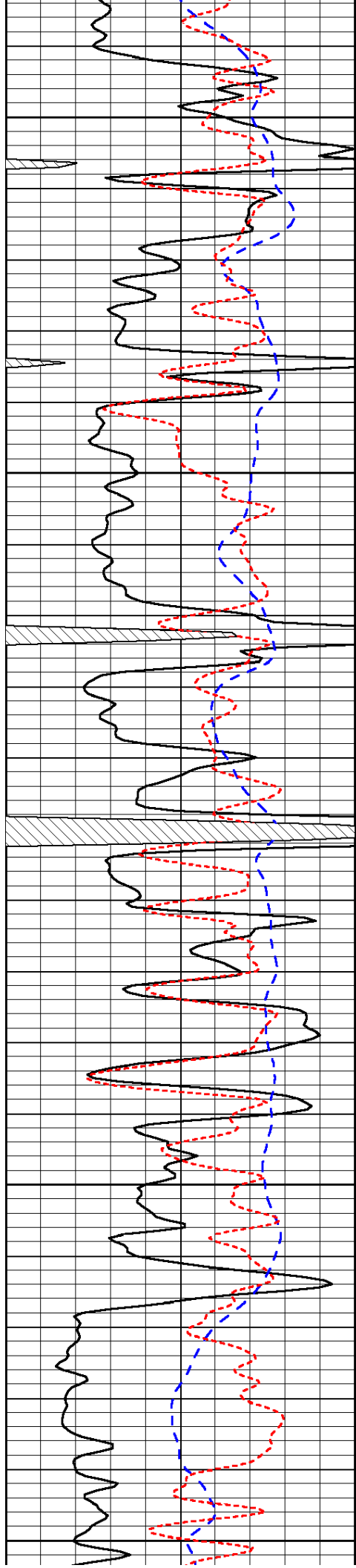


-33

-33

-32

-31



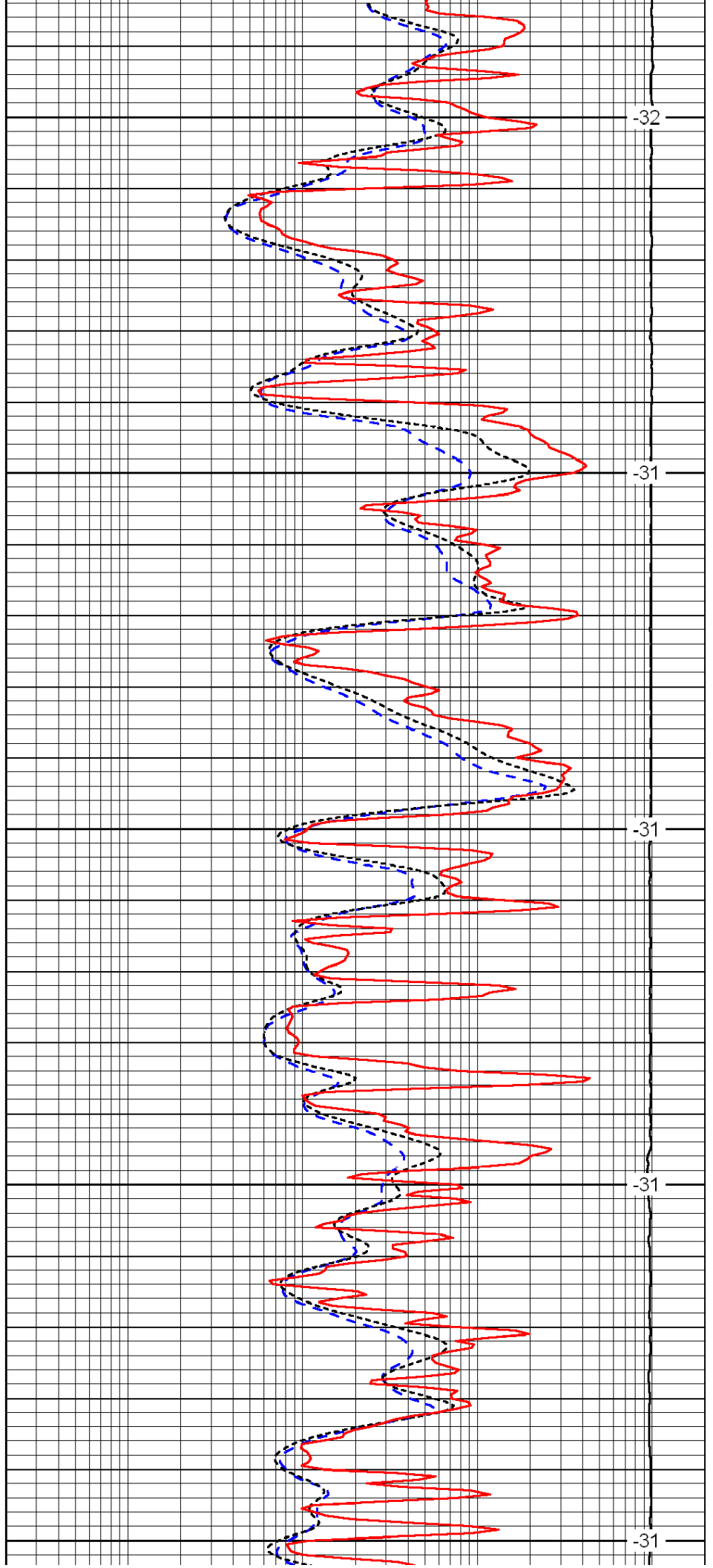
3500

3550

3600

3650

3700



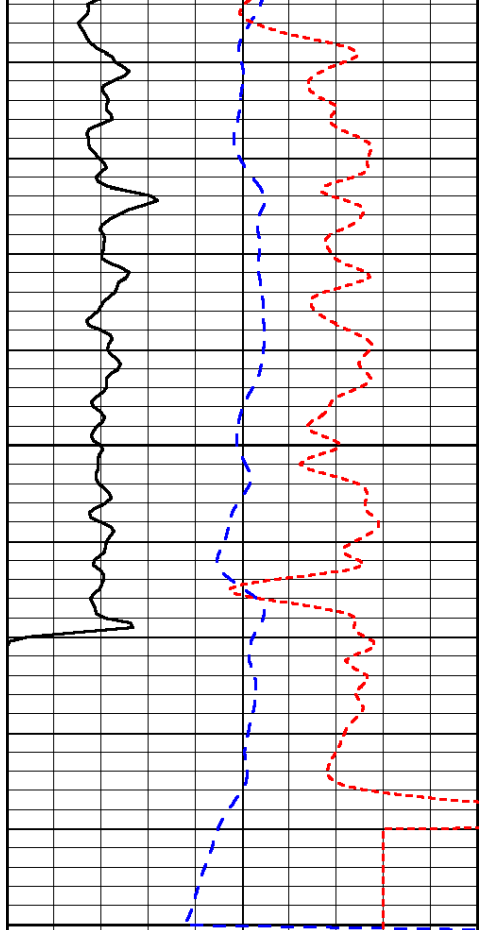
-32

-31

-31

-31

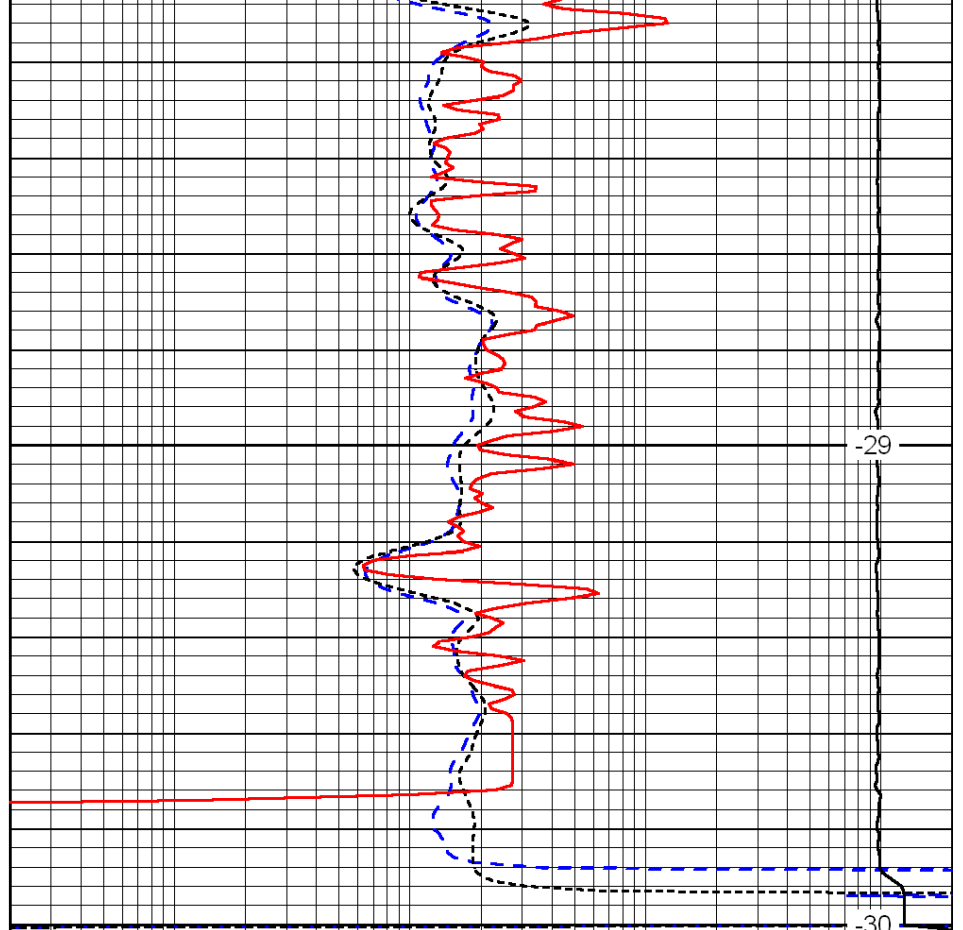
-31



0	Gamma Ray	150
-200	SP (mV)	0
-160	Rxo / Rt	40

3750

3800



-29

-30

0.2	Deep Resistivity	2000
0.2	Medium Resistivity	2000
0.2	Shallow Resistivity	2000
15000	Line Tension	0

LSPD