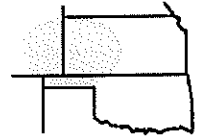


Pro-Stake LLC
 Oil Field & Construction Site Staking
 P.O. Box 2324
 Garden City, Kansas 67846
 Office/Fax: (620) 276-6159
 Cell: (620) 272-1499



252623bar
 PLAT NO.

10342
 INVOICE NO.

Ritchie Exploration, Inc.
 OPERATOR
Ford County, KS
 COUNTY

25 26s 23w
 Sec. Twp. Rng.

#1 Nau 25C
 LEASE NAME
2020' FSL - 1725' FWL
 LOCATION SPOT

GR. ELEVATION: **2418.5'**

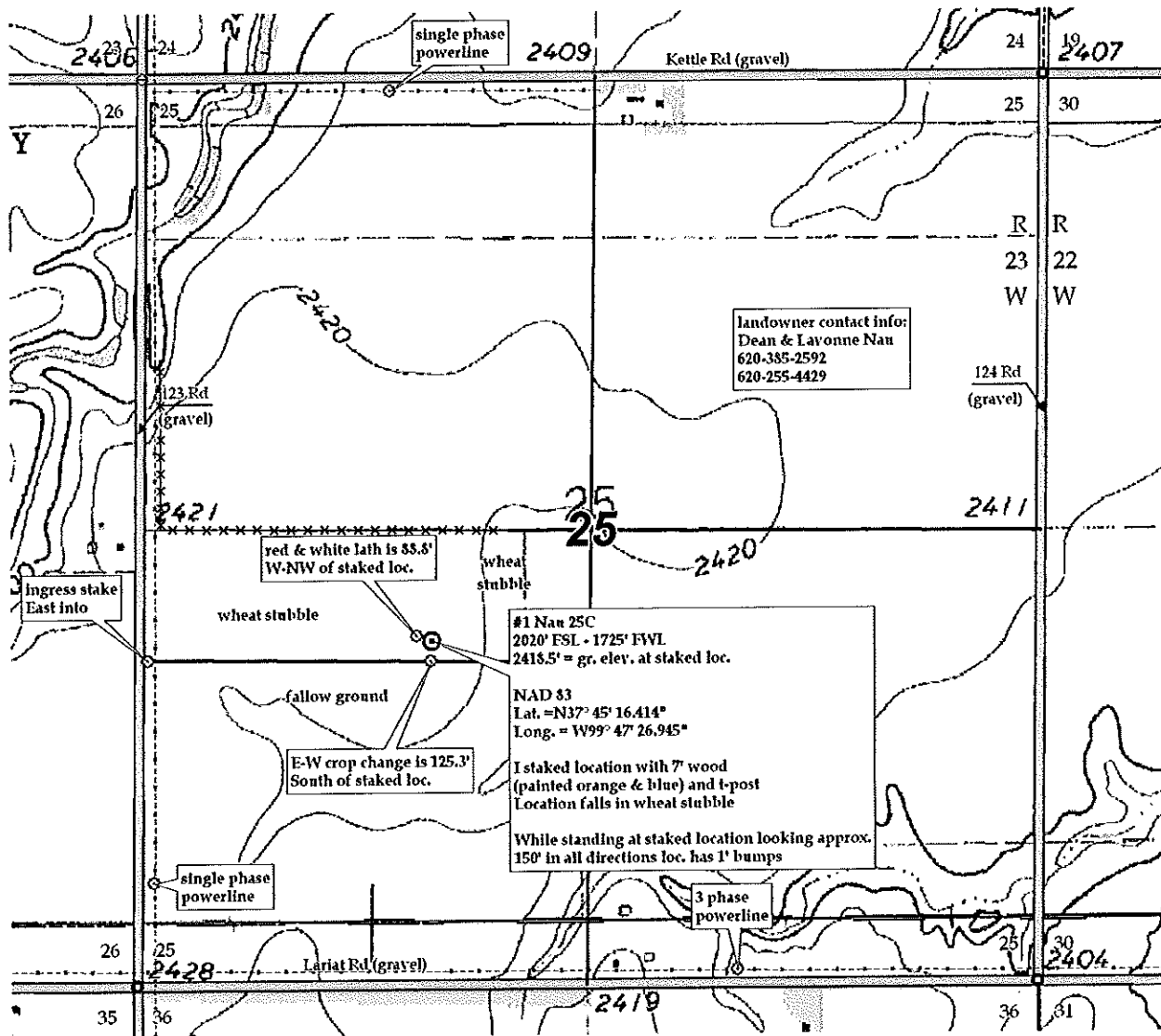
SCALE: 1" = 1000'
 DATE: Sept. 24th, 2012
 MEASURED BY: Ben R.
 DRAWN BY: Luke R.
 AUTHORIZED BY: Justin C.



Directions: From approx. 0.5 mile West of Wright Ks at the intersection of Hwy 283 & Hwy 50 - Now go 0.4 mile East on Hwy 50 - Now go 5.6 mile East on Wright Rd - Now go 1 mile South on 123 Rd to the NW corner of section 25-26s-23w - Now go 0.7 mile South on 123 Rd to ingress stake East into - Now go 1725' East through wheat stubble - Now go 125' North through wheat stubble into staked location.

Final ingress must be verified with landowner or Operator.

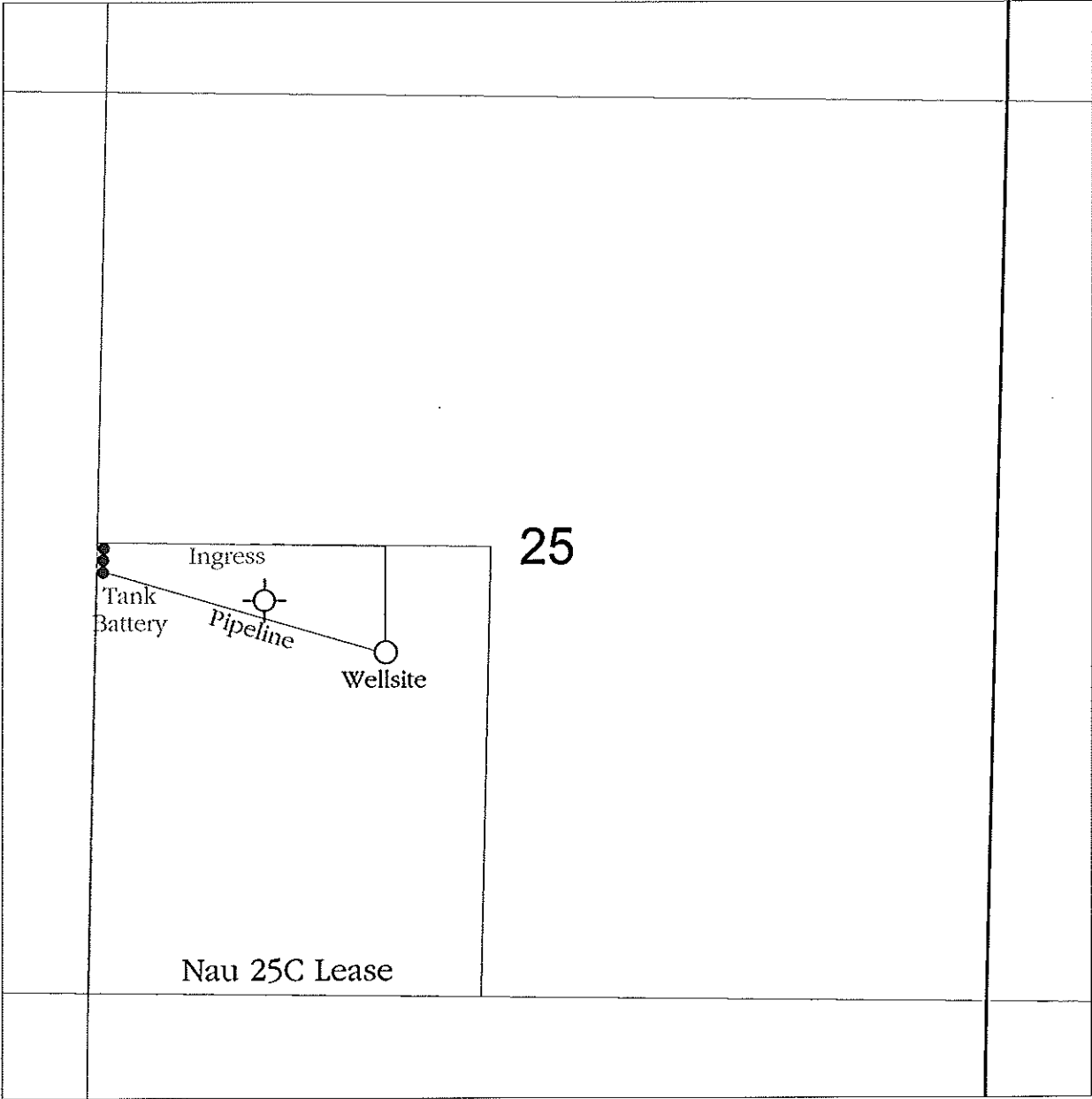
*This drawing does not constitute a monumented survey or a land survey plat.
 This drawing is for construction purposes only.*



KANSAS SURFACE OWNER NOTIFICATION ACT

R 23 W

T
26
S



SCALE = 1 : 12,000

FORD COUNTY, KANSAS