

# GEOLOGIST'S REPORT

DRILLING TIME AND SAMPLE LOG

**Trans Pacific Oil Corp.**  
**#1-18 Peters Unit 'A'**  
**Wildcat**  
**2740' FSL, 2740' FEL**  
**18** (WSE) **18** (FSL) **18W** (FEL)  
**Rush** STATE **KS**  
**Pickrell Rig #1**  
**8-13-12** (DATE) **8-21-12** (DATE)  
**3940** (WELL NO) **3941** (WELL NO)  
**3106** (WELL NO) **Chem** (TYPE)

**ELEVATIONS**  
**KB 2073**  
**2063**  
 Measurements Are All From **KB**  
**CASING**  
 Gauge **8 5/8" @ 946'**  
**ELECTRICAL SURVEY**  
**RAG: COMP W/D**  
**DI SONIC**

FORMATION TYPE AND STRUCTURAL POSITION

FORMATION	WELL TOP		STRUCTURAL POSITION	
	WELL TOP	WELL TOP	A	B
Anhydrite	1222	1222	851	850
Base Anhydrite	1254	1257	816	816
Heobner	3421	3421	-1348	-1344
Lansing	3470	3469	-1396	-1394
BKC	3744	3746	-1673	-1669
Marmaton	3817	3813	-1740	-1740
Unconf/Congl	3830	3832	-1759	-1756
Arbuckle	3897	3895	-1822	-1820

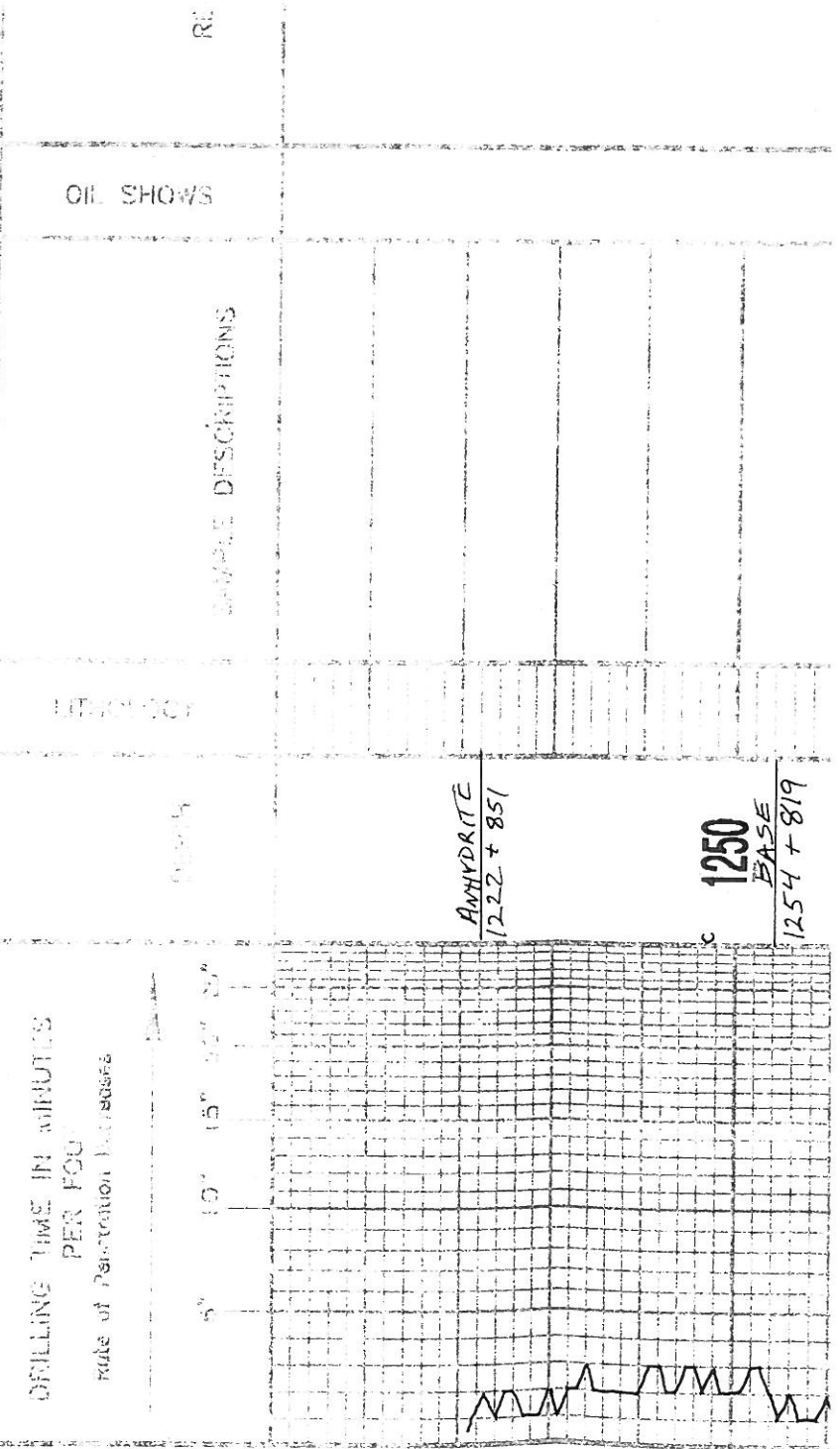
REFERENCE WELLS FOR STRUCTURE

**Sunburst #1 Miller 'A5' NE SW SE 10-10-10W**

REMARKS

LEGEND

-  Anhydrite
-  Salt
-  Sandstone
-  Shale
-  Carbonate
-  Limestone
-  Quartz
-  Gneiss
-  Dolomite



LOG 7710

ANHYDRITE  
1222 + 851

1250  
BASE  
1254 + 819

3300

3400

HEEBNER  
3421 - 1348

LANSING  
3470 - 1397

GEO ON L  
DRLG @ 331

LS, WHT, F, XTLN, V S HLY (FLOOD),  
S → M HRD, G XTLN Ø, NS

LS, TAN, GRN, V F XTLN, SOFT, SL  
CHERT, SL DMS, P Ø, NS

LS, A.A., INCR FOSS

LS, BRN/TAN, F XTLN, M HRD,  
SL FOSS, P XTLN Ø, NS

LS, CRM, V F XTLN, V FOOLS, PCMT,  
OOLS, SOFT, G Ø, NS

LS, A.A. Pcs SCT OOC

SH, BLK

SH, GRN / GRN

LS, WHT, F → M XTLN, S → M HRD,  
FOSS, F Ø, NS  
Pcs V F XTLN, DMS, TITE

SH, GRN

LS, WHT, CRM, F XTLN, M HRD, SL  
FOSS P Ø, NS, SL DTY

DST # 134  
30.7C  
IF: 80B 5" 1  
FF: 80B 6 1/2" 1  
REC: 1260' SL  
1 1/2 M, 4 1/2  
FP: 62-307, 3  
SIP: 1170-115  
HP: 1697-16.  
CHLOR 94,

SUR. 1110-1131  
HP: 1697-165  
CHLOR 94.1

STRAP 351  
BOARD 351  
SHORT

7:AM 8-19-26  
DST #2  
MUD CHE  
VIS 57 WT  
CHLOR 8.800  
FILT 10.2

SH, GRY

LS, WHT, CRM, F XTLN, M HRD, SL FOSS P. NS, SL DTY

LS, WHT, CRM, VEXTLN, S. M HRD, CHLKY, P XTLN P. NS

LS, TAN, EXTLN, SCT LS FRAGS W/M V VUGY, LT FLUORSTNG, SHO GAS BBLS, G SL DULL YLLW FLUOR FO ON BRK, G GAS ON BRK, SL SWEET ODOR ON BRK, BRN + FEW VLT BRW OIL

LS, TAN, WHT, F XTLN, DMS, V HRD, V SL P OOC P. NS

SH, DK GRY

LS, WHT, CRM, VEXTLN, M HRD, V FEW FOSS, SCT CHLKY, NS

SH, M GRY, SL SLTY

LS, BRN, VEXTLN MATRIX, ABOV FOSS FRAGS + SCT OOL'S, V W CMT'D, V HRD, TITE, NS

LS, A.A., INC R OOL'S + SIZE

LS, WHT, F XTLN, SOFT, BATH, V OOC, FEW OOL W/M, PERM, G OOC P. NS

LS, A.A., Pcs V SOFT, G P. NS

LS, WHT, V F XTLN, DMS, SL FOSS W/M, HRD, NO APP P. NS

A.A.

SH, GRY, DK GRY

LS, WHT, F XTLN, HRD, V OOL, WELL CMT'D OOL'S, V P P. NS

LS, WHT, CRM, VEXTLN, DMS, HRD, TITE, NS

SH, GRN, GRY, DK GRY, SL SLTY

LS, WHT, TAN, F XTLN, Pcs W/SC CR5 CLR XTL'S W/M, HRD, NO APP P. NS

LS, WHT, V F XTLN, CHLKY, SOFT, NS

SH, GRN, BRN, BLK

LS, WHT, F XTLN, SOFT, SL CHLKY, Pcs, G OOC W P. NS

A.A.

SH, GRN, BRN, GRN/BRN

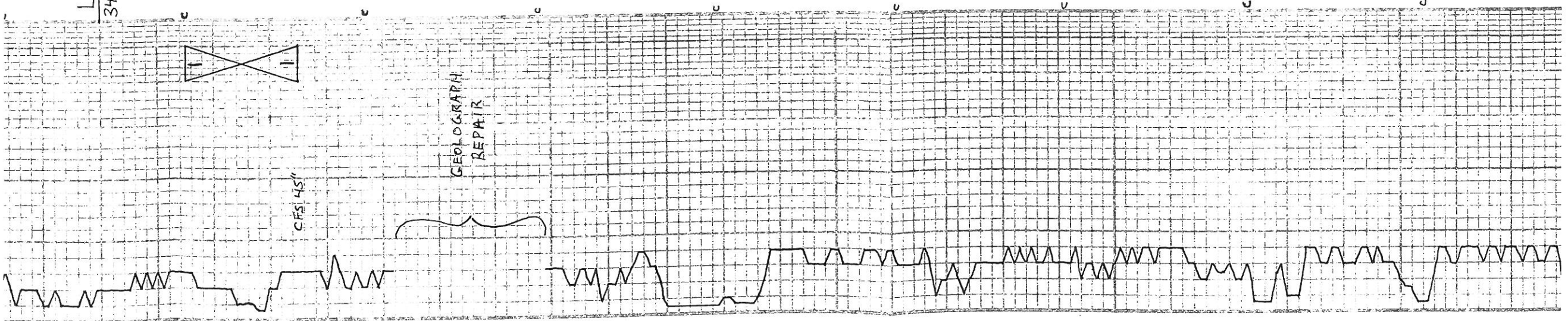
SH, GRY

LANSING  
3470 - 1397

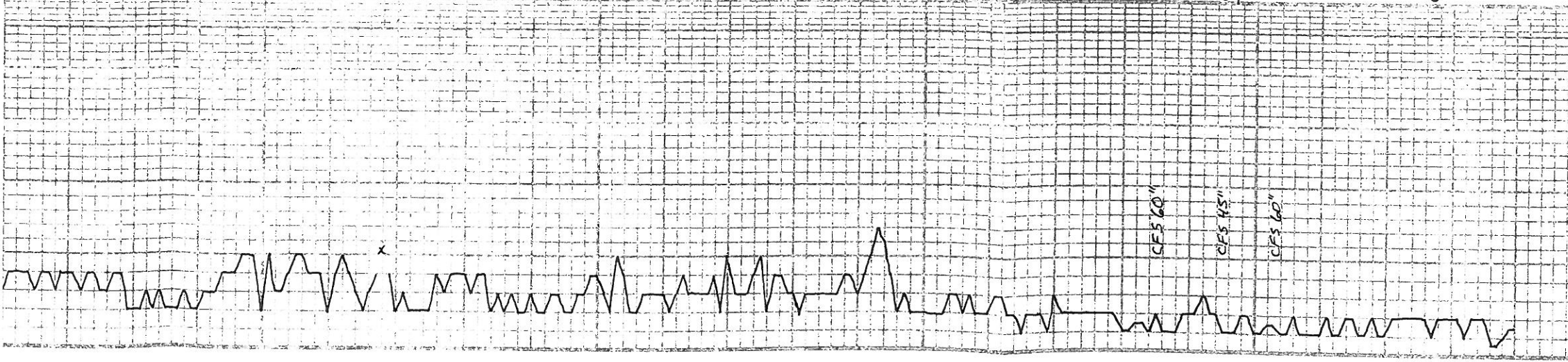
3500  
DEV 1/4"

3600

3700







BKC  
3744-1671

3800

MARMATON  
3817-1744

UNIFORMITY  
3830-1757

ARBuckle  
3900  
3897-1824

SH, GRN, BRN, GRN/BRN	SH, GRY	LS, GRY, F XTLN, V FOSS, SOFT LG FOSS WIN, PCS HRD, MS	SH, GRY	SH, GRY	CHT, PEACH, WHT, CRM	SH, GRY	LS, WHT, FXTLN, SOFT, BRITL, SL CHLKY, P XTLN Ø, MS	SH, GRY	LS, WHT, FXTLN, ØMS, V FEW FOSS, SCT CHT & CHLKY, MS	SH, GRY, BURG	SH, BLK, GRY, BURG	A.A.	LS, DOLO ITIC, GRY, BRN, FXTLN, ØMS, TITE, NO APP Ø, MS	SS, CLR, ORANGE, M → LG GRNS, FCMT'D, SCT UNCONSOL GRNS, GØ, SUBBRND, MS, SCT CHT	CHT, PEACH, WHT, CLR, OPAQ, FRESH, CONQ FRAC'D, MS	CHT, OPAQ, V OOL WIN, VW CMT'D ØØLS, FRESH, TITE	SH, RED, SOFT	DOLO, WHT, CRS, GRMLR, V G INT GRMLR Ø, SOFT, SL FRABLE PCS VW CMT'D, HRD	DOLO, WHT, CRS, XTLN, V ANG XTLN, G INT XTLN Ø, MS, HRD	CHT, REW, V GRMLR, F RE-CMT'D, G INT XTLN Ø, MS, V SHLY	DOLO, WHT, GRY, V GRMLR, SUCR, SOFT, P Ø, MS	LOST CIRC 40" INTO CONDM HOLE FOR LOG.
-----------------------	---------	--	---------	---------	----------------------	---------	---	---------	--	---------------	--------------------	------	---	---	--	--	---------------	---	---	---	--	--

7:AM 8-20  
DRLG,  
MUD CI  
VISSY u  
CHLOR 6,50C  
FILT 11.2