



TEMPORARY ABANDONMENT WELL APPLICATION

OPERATOR: License# _____
 Name: _____
 Address 1: _____
 Address 2: _____
 City: _____ State: _____ Zip: _____ + _____
 Contact Person: _____
 Phone: (_____) _____
 Contact Person Email: _____
 Field Contact Person: _____
 Field Contact Person Phone: (_____) _____

API No. 15- _____
 Spot Description: _____
 _____ Sec. _____ Twp. _____ S. R. _____ E W
 _____ feet from N / S Line of Section
 _____ feet from E / W Line of Section
 GPS Location: Lat: _____, Long: _____
 County: _____ (e.g. xx.xxxxx) (e.g. -xxx.xxxxx)
 Lease Name: _____ Well #: _____
 Elevation: _____ GL KB
 Well Type: (check one) Oil Gas OG WSW Other: _____
 SWD Permit #: _____ ENHR Permit #: _____
 Gas Storage Permit #: _____
 Spud Date: _____ Date Shut-In: _____

	Conductor	Surface	Production	Intermediate	Liner	Tubing
Size						
Setting Depth						
Amount of Cement						
Top of Cement						
Bottom of Cement						

Casing Fluid Level: _____ How Determined? _____ Date: _____
 Casing Squeeze(s): _____ to _____ w / _____ sacks of cement, _____ to _____ w / _____ sacks of cement. Date: _____
 (top) (bottom) (top) (bottom)
 Do you have a valid Oil & Gas Lease? Yes No
 Depth and Type: Junk in Hole at _____ (depth) Tools in Hole at _____ (depth) Casing Leaks: Yes No Depth of casing leak(s): _____
 Type Completion: ALT. I ALT. II Depth of: DV Tool: _____ w / _____ sacks of cement Port Collar: _____ w / _____ sack of cement
 (depth) (depth)
 Packer Type: _____ Size: _____ Inch Set at: _____ Feet
 Total Depth: _____ Plug Back Depth: _____ Plug Back Method: _____

Geological Data:

Formation Name	Formation Top	Formation Base	Completion Information
1. _____	At: _____	to _____ Feet	Perforation Interval _____ to _____ Feet or Open Hole Interval _____ to _____ Feet
2. _____	At: _____	to _____ Feet	Perforation Interval _____ to _____ Feet or Open Hole Interval _____ to _____ Feet

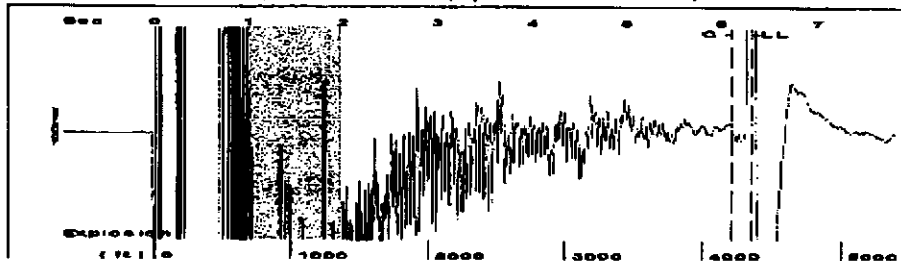
Submitted Electronically

Do NOT Write in This Space - KCC USE ONLY	Date Tested: _____	Results: _____	Date Plugged: _____	Date Repaired: _____	Date Put Back in Service: _____
	Review Completed by: _____ Comments: _____ TA Approved: Yes <input type="checkbox"/> Denied <input type="checkbox"/>				

Mail to the Appropriate KCC Conservation Office:

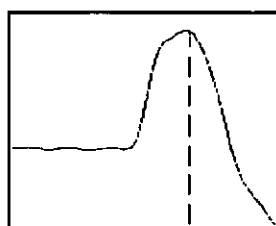
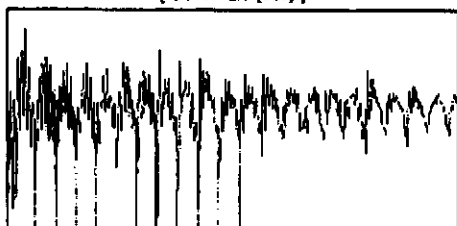
	KCC District Office #1 - 210 E. Frontview, Suite A, Dodge City, KS 67801	Phone 620.225.8888
	KCC District Office #2 - 3450 N. Rock Road, Building 600, Suite 601, Wichita, KS 67226	Phone 316.630.4000
	KCC District Office #3 - 1500 SW Seventh Steet, Chanute, KS 66720	Phone 620.432.2300
	KCC District Office #4 - 2301 E. 13th Street, Hays, KS 67601-2651	Phone 785.625.0550
	Underground Porosity Gas Storage (UPGS) 8200 E. 34th Street Circle N., Suite 1003, Wichita, KS 67226	Phone 316.734.4933

Group: Belpre Well: Chalk 3-14 (acquired on: 09/05/12 16:54:04)



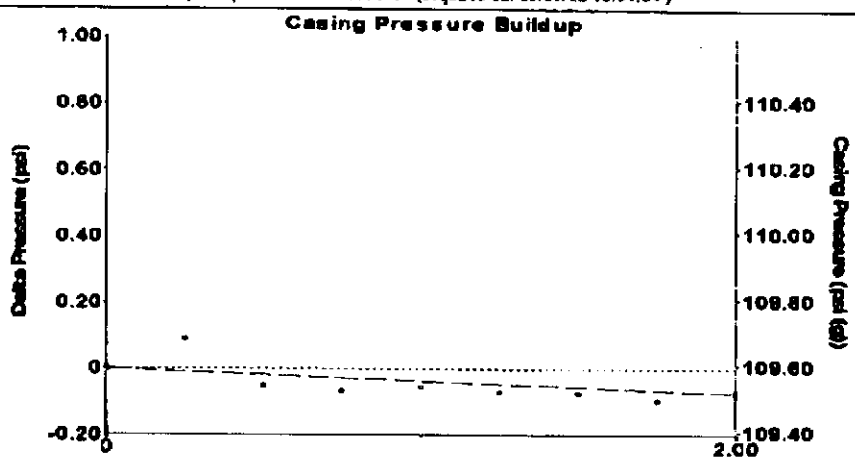
Filter Type High Pass Automatic Collar Count Yes Time 6.309 sec
 Manual Acoustic Velocity 1373.86 ft/s Manual JTS/sec 21.7865 Joints 138.185 ft/s
 Depth 4356.97 ft

[1.0 to 2.0 (Sec)]



Analysis Method: Automatic

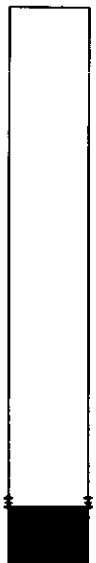
Group: Belpre Well: Chalk 3-14 (acquired on: 09/05/12 16:54:04)



Change in Pressure -0.07 psi PTS493
 Change in Time 2.00 min Range 0.7 psi

Group: Belpre Well: Chalk 3-14 (acquired on: 09/05/12 16:54:04)

Production	Potential	Casing Pressure
Current		109.6 psi (g)
Oil .*. BBL/D		Casing Pressure Buildup
Water .*. BBL/D		0.1 psi
Gas .*. Mac/D		2.00 min
		Gas/Liquid Interface Pressure
		-. psi (g)
IPR Method Vogel		Liquid Level Depth
PBHP/SBHP .*		4356.97 ft
Production Efficiency 0.0		Pump Intake Depth
		-. ft
Oil 40 deg. API		Formation Depth
Water 1.05 Sp.Gr. H2O		4304.00 ft
Gas 0.64 Sp.Gr. AIR		
Acoustic Velocity 1381.19 ft/s		



Producing

Annular Gas Flow .*. Mac/D

% Liquid 100 %

Pump Intake .*. psi (g)

Producing BHP .*. psi (g)

Static BHP .*. psi (g)

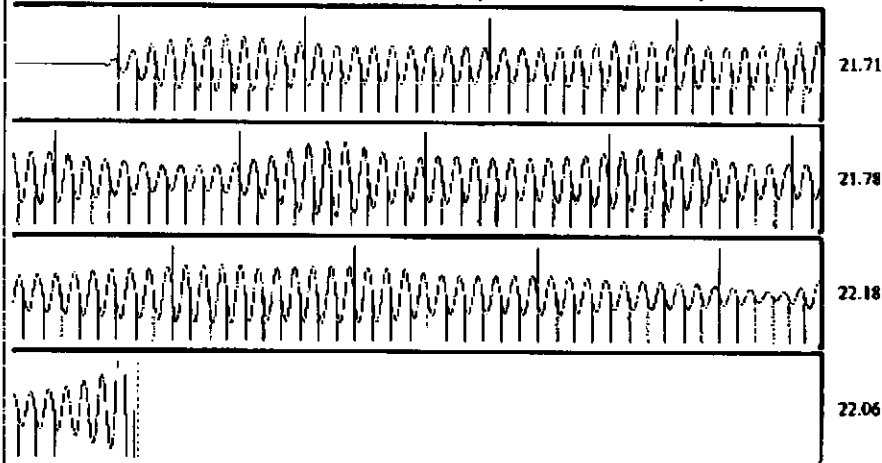
Formation Submergence

Total Gaseous Liquid Column HT (TVD) .*. ft

Equivalent Gas Free Liquid HT (TVD) .*. ft

Acoustic Test

Group: Belpre Well: Chalk 3-14 (acquired on: 09/05/12 16:54:04)



Acoustic Velocity 1381.19 ft/s	Joints counted 128
Joints Per Second 21.9028 jts/sec	Joints to liquid level 138.185
Depth to liquid level 4356.97 ft	Filter Width 19.7865
Automatic Collar Count Yes	Time to 1st Collar 0.26