

KANSAS CORPORATION COMMISSION  
OIL & GAS CONSERVATION DIVISION



1093177

Form CP-111

March 2009

Form must be Typed

Form must be signed

All blanks must be complete

# TEMPORARY ABANDONMENT WELL APPLICATION

OPERATOR: License# \_\_\_\_\_  
Name: \_\_\_\_\_  
Address 1: \_\_\_\_\_  
Address 2: \_\_\_\_\_  
City: \_\_\_\_\_ State: \_\_\_\_\_ Zip: \_\_\_\_\_ + \_\_\_\_\_  
Contact Person: \_\_\_\_\_  
Phone: ( \_\_\_\_\_ ) \_\_\_\_\_  
Contact Person Email: \_\_\_\_\_  
Field Contact Person: \_\_\_\_\_  
Field Contact Person Phone: ( \_\_\_\_\_ ) \_\_\_\_\_

API No. 15- \_\_\_\_\_  
Spot Description: \_\_\_\_\_  
\_\_\_\_ - \_\_\_\_ - \_\_\_\_ - \_\_\_\_ Sec. \_\_\_\_\_ Twp. \_\_\_\_\_ S. R. \_\_\_\_\_ ☐ E ☐ W  
\_\_\_\_\_ feet from ☐ N / ☐ S Line of Section  
\_\_\_\_\_ feet from ☐ E / ☐ W Line of Section  
GPS Location: Lat: \_\_\_\_\_ (e.g. xx.xxxxx) , Long: \_\_\_\_\_ (e.g. -xxx.xxxxx)  
County: \_\_\_\_\_  
Lease Name: \_\_\_\_\_ Well #: \_\_\_\_\_  
Elevation: \_\_\_\_\_ ☐ GL ☐ KB  
Well Type: (check one) ☐ Oil ☐ Gas ☐ OG ☐ WSW ☐ Other: \_\_\_\_\_  
☐ SWD Permit #: \_\_\_\_\_ ☐ ENHR Permit #: \_\_\_\_\_  
☐ Gas Storage Permit #: \_\_\_\_\_  
Spud Date: \_\_\_\_\_ Date Shut-In: \_\_\_\_\_

	Conductor	Surface	Production	Intermediate	Liner	Tubing
Size						
Setting Depth						
Amount of Cement						
Top of Cement						
Bottom of Cement						

Casing Fluid Level: \_\_\_\_\_ How Determined? \_\_\_\_\_ Date: \_\_\_\_\_  
Casing Squeeze(s): \_\_\_\_\_ to \_\_\_\_\_ w / \_\_\_\_\_ sacks of cement, \_\_\_\_\_ to \_\_\_\_\_ w / \_\_\_\_\_ sacks of cement. Date: \_\_\_\_\_  
(top) (bottom) (top) (bottom)  
Do you have a valid Oil & Gas Lease? ☐ Yes ☐ No  
Depth and Type: ☐ Junk in Hole at \_\_\_\_\_ (depth) ☐ Tools in Hole at \_\_\_\_\_ (depth) Casing Leaks: ☐ Yes ☐ No Depth of casing leak(s): \_\_\_\_\_  
Type Completion: ☐ ALT. I ☐ ALT. II Depth of: ☐ DV Tool: \_\_\_\_\_ w / \_\_\_\_\_ sacks of cement ☐ Port Collar: \_\_\_\_\_ w / \_\_\_\_\_ sack of cement  
(depth) (depth)  
Packer Type: \_\_\_\_\_ Size: \_\_\_\_\_ Inch Set at: \_\_\_\_\_ Feet  
Total Depth: \_\_\_\_\_ Plug Back Depth: \_\_\_\_\_ Plug Back Method: \_\_\_\_\_

## Geological Data:

Formation Name	Formation Top	Formation Base	Completion Information
1. _____	At: _____ to _____ Feet	Perforation Interval _____ to _____ Feet or Open Hole Interval _____ to _____ Feet	
2. _____	At: _____ to _____ Feet	Perforation Interval _____ to _____ Feet or Open Hole Interval _____ to _____ Feet	

Submitted Electronically

**Do NOT Write in This  
Space - KCC USE ONLY**

Date Tested: \_\_\_\_\_ Results: \_\_\_\_\_ Date Plugged: \_\_\_\_\_ Date Repaired: \_\_\_\_\_ Date Put Back in Service: \_\_\_\_\_

Review Completed by: \_\_\_\_\_ Comments: \_\_\_\_\_ TA Approved: Yes ☐ Denied ☐

## Mail to the Appropriate KCC Conservation Office:

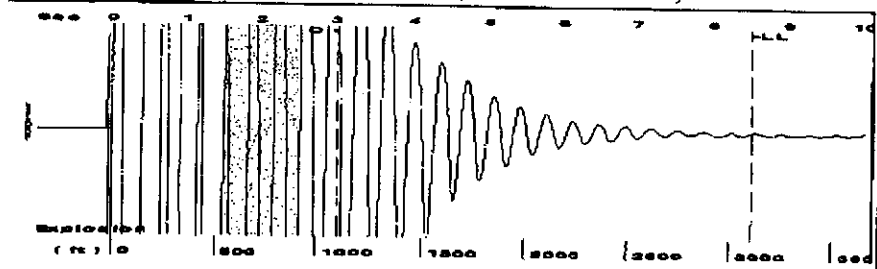
	KCC District Office #1 - 210 E. Frontview, Suite A, Dodge City, KS 67801	Phone 620.225.8888
	KCC District Office #2 - 3450 N. Rock Road, Building 600, Suite 601, Wichita, KS 67226	Phone 316.630.4000
	KCC District Office #3 - 1500 SW Seventh Steet, Chanute, KS 66720	Phone 620.432.2300
	KCC District Office #4 - 2301 E. 13th Street, Hays, KS 67601-2651	Phone 785.625.0550
	Underground Porosity Gas Storage (UPGS) 8200 E. 34th Street Circle N., Suite 1003, Wichita, KS 67226	Phone 316.734.4933



Received Fax: 09/07/2012 2:24PM • Fax Station: FG-Ho Co. LLC

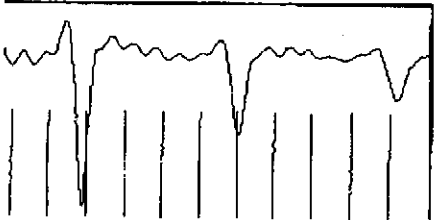
PAGE 06/06  
FGHLL  
6289953323  
09/07/2012 14:17

Group: Sawyer Well: Grigaby 1-22 (acquired on: 09/07/12 11:18:30)

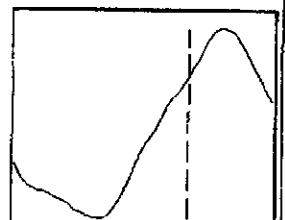


Filter Type High Pass Automatic Collar Count Yes Time 2.5 sec  
Initial Acoustic Velocity 759.281 ft/s Manual JTS/sec 11.976  
Joints 97.973 Jts  
Depth 3105.74 ft

[ 1.5 to 2.5 (Sec) ]

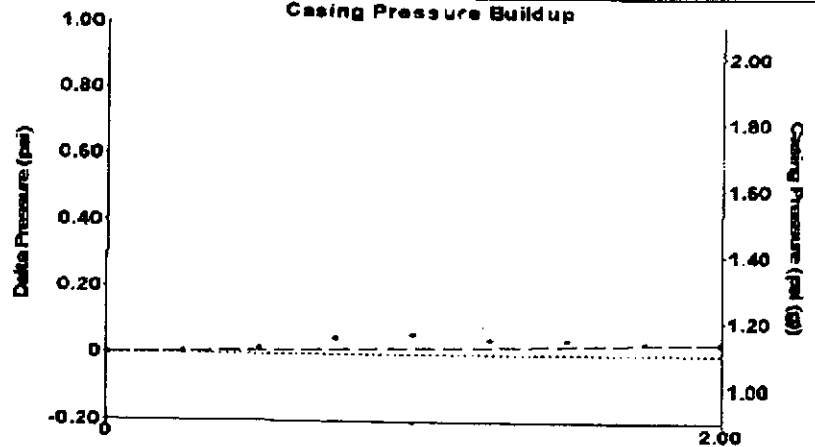


Analysis Method: Automatic



Group: Sawyer Well: Grigaby 1-22 (acquired on: 09/07/12 11:18:30)

Casing Pressure Buildup



Change in Pressure 0.04 psi PT8493  
Change in Time 2.00 min Range 0-7 psi

Group: Sawyer Well: Grigaby 1-22 (acquired on: 09/07/12 11:18:30)

Production  
Current Potential  
Oil - - BBL/D  
Water - - BBL/D  
Gas - - Mac/D

PR Method Vogel  
BHP/SBHP - -  
Production Efficiency 0.0

IL - 40 deg API  
Water 1.03 Sp.Gr.H2O  
Gas 1.24 Sp.Gr.AIR

Acoustic Velocity 730.763 ft/s



Producing  
Casing Pressure 1.1 psi (g)  
Casing Pressure Buildup 0.033 psi  
2.00 min  
Gas/Liquid Interface Pressure 3.3 psi (g)

Liquid Level Depth 3105.74 ft

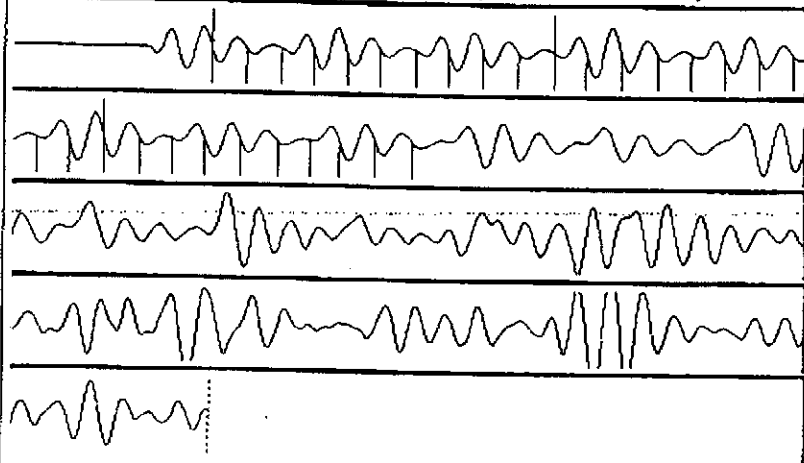
Pump Intake Depth 3288.00 ft  
Formation Depth 3364.00 ft

Pump Intake 66.2 psi (g)  
Producing BHP 100.8 psi (g)  
Static BHP - - psi (g)

Formation Submergence  
Stat Gas/Liquid Column HT (TVD) 182 ft  
Equivalent Gas Free Liquid HT (TVD) 182 ft

Acoustic Test

Group: Sawyer Well: Grigaby 1-22 (acquired on: 09/07/12 11:18:30)



Acoustic Velocity 730.763 ft/s Joints counted 29  
Joints Per Second 11.5262 jts/sec Joints to liquid level 97.973  
Depth to liquid level 3105.74 ft Filter Width 9.97603 13.976  
Automatic Collar Count Yes Time to 1st Collar 0.5 3.016