



TEMPORARY ABANDONMENT WELL APPLICATION

OPERATOR: License# _____
 Name: _____
 Address 1: _____
 Address 2: _____
 City: _____ State: _____ Zip: _____ + _____
 Contact Person: _____
 Phone: (_____) _____
 Contact Person Email: _____
 Field Contact Person: _____
 Field Contact Person Phone: (_____) _____

API No. 15- _____
 Spot Description: _____
 _____ Sec. _____ Twp. _____ S. R. _____ E W
 _____ feet from N / S Line of Section
 _____ feet from E / W Line of Section
 GPS Location: Lat: _____, Long: _____
 County: _____ (e.g. xx.xxxxx) (e.g. -xxx.xxxxx)
 Lease Name: _____ Well #: _____
 Elevation: _____ GL KB
 Well Type: (check one) Oil Gas OG WSW Other: _____
 SWD Permit #: _____ ENHR Permit #: _____
 Gas Storage Permit #: _____
 Spud Date: _____ Date Shut-In: _____

	Conductor	Surface	Production	Intermediate	Liner	Tubing
Size						
Setting Depth						
Amount of Cement						
Top of Cement						
Bottom of Cement						

Casing Fluid Level: _____ How Determined? _____ Date: _____
 Casing Squeeze(s): _____ to _____ w / _____ sacks of cement, _____ to _____ w / _____ sacks of cement. Date: _____
 (top) (bottom) (top) (bottom)
 Do you have a valid Oil & Gas Lease? Yes No
 Depth and Type: Junk in Hole at _____ (depth) Tools in Hole at _____ (depth) Casing Leaks: Yes No Depth of casing leak(s): _____
 Type Completion: ALT. I ALT. II Depth of: DV Tool: _____ w / _____ sacks of cement Port Collar: _____ w / _____ sack of cement
 (depth) (depth)
 Packer Type: _____ Size: _____ Inch Set at: _____ Feet
 Total Depth: _____ Plug Back Depth: _____ Plug Back Method: _____

Geological Data:

Formation Name	Formation Top	Formation Base	Completion Information
1. _____	At: _____	to _____ Feet	Perforation Interval _____ to _____ Feet or Open Hole Interval _____ to _____ Feet
2. _____	At: _____	to _____ Feet	Perforation Interval _____ to _____ Feet or Open Hole Interval _____ to _____ Feet

Submitted Electronically

Do NOT Write in This Space - KCC USE ONLY	Date Tested: _____	Results: _____	Date Plugged: _____	Date Repaired: _____	Date Put Back in Service: _____
	Review Completed by: _____	Comments: _____	TA Approved: Yes <input type="checkbox"/> Denied <input type="checkbox"/>		

Mail to the Appropriate KCC Conservation Office:

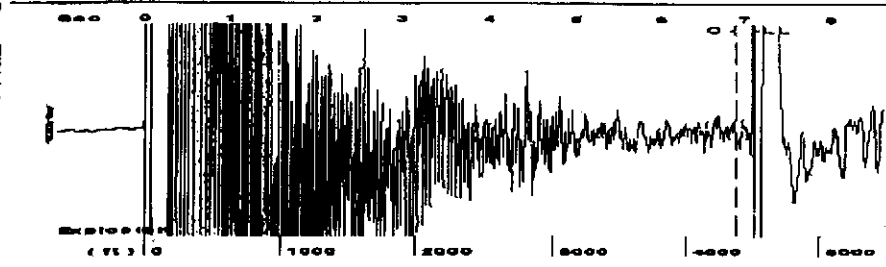
	KCC District Office #1 - 210 E. Frontview, Suite A, Dodge City, KS 67801	Phone 620.225.8888
	KCC District Office #2 - 3450 N. Rock Road, Building 600, Suite 601, Wichita, KS 67226	Phone 316.630.4000
	KCC District Office #3 - 1500 SW Seventh Steet, Chanute, KS 66720	Phone 620.432.2300
	KCC District Office #4 - 2301 E. 13th Street, Hays, KS 67601-2651	Phone 785.625.0550
	Underground Porosity Gas Storage (UPGS) 8200 E. 34th Street Circle N., Suite 1003, Wichita, KS 67226	Phone 316.734.4933

Received Fax: 09/07/2012 2:24PM Fax Station: FGH Co., LLC
 09/07/2012 14:17 6209953323

PAGE 04/05

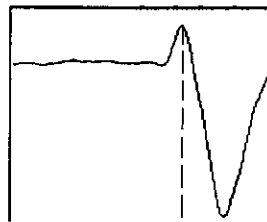
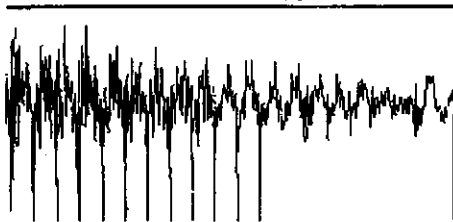
FGHLL

Group: Sawyer Well: CURRY 3-32 (acquired on: 09/07/12 10:36:52)



Filter Type High Pass Automatic Collar Count Yes Time 7.091 sec
 Manual Acoustic Velocity 1271.83 ft/s Manual JTS/sec 20.0401 Joints 144.343 Jts
 Depth 4509.29 ft

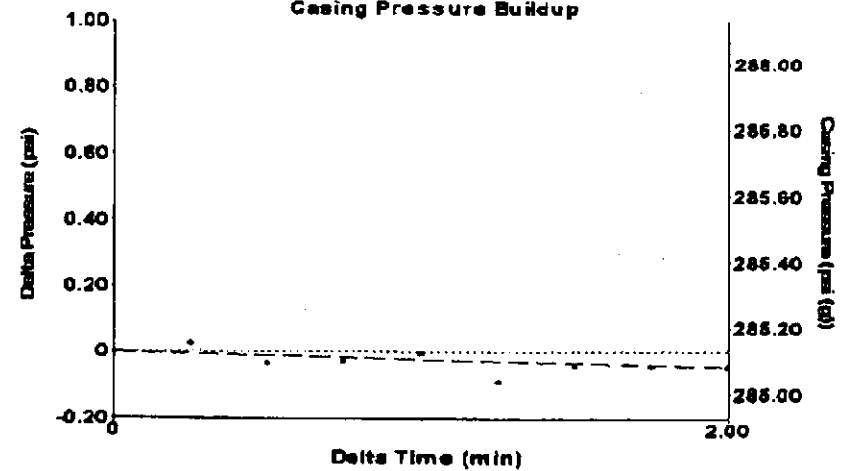
{ 0.5 to 1.5 (Sec) }



Analysis Method: Automatic

Group: Sawyer Well: CURRY 3-32 (acquired on: 09/07/12 10:36:52)

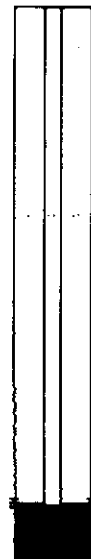
Casing Pressure Buildup



Change in Pressure -0.05 psi PT8493
 Change in Time 2.00 min Range 0 - 1 psi

Group: Sawyer Well: CURRY 3-32 (acquired on: 09/07/12 10:36:52)

Production	Potential	Casing Pressure
Oil -*- BBL/D	-*- BBL/D	285.1 psi (g)
Water -*- BBL/D	-*- BBL/D	Casing Pressure Buildup
Gas -*- Msc/D	-*- Msc/D	-0.048 psi
		2.00 min
IPR Method Vogel	Gas/Liquid Interface Pressure	
PBHP/SBHP -*-	320.1 psi (g)	
Production Efficiency 0.0	Liquid Level Depth	
	4509.29 ft	
Oil 40 deg API	Pump Intake Depth	
Water 1.05 Sp.Gr.H2O	4530.00 ft	
Gas 0.70 Sp.Gr.AIR	Formation Depth	
	4506.00 ft	
Acoustic Velocity 1271.83 ft/s		

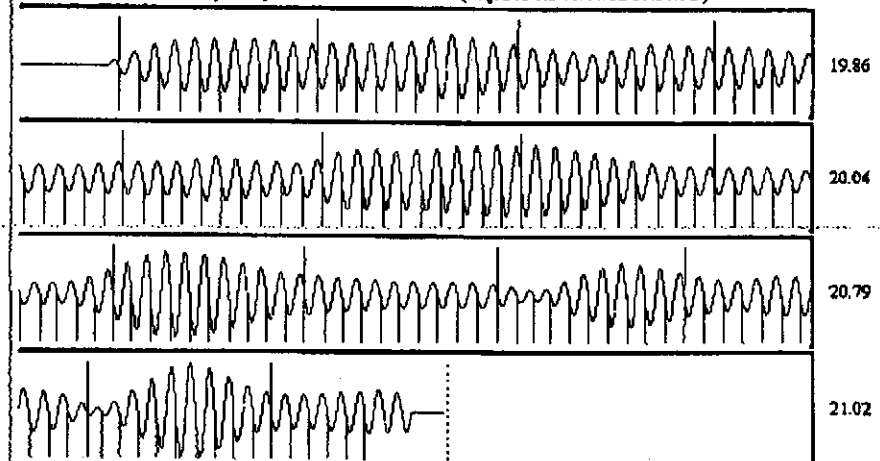


Producing
 Annular Gas Flow 0 Msc/D
 % Liquid 100 %
 Pump Intake 326.9 psi (g)
 Producing BHP 320.1 psi (g)
 Static BHP -*- psi (g)

Formation Submergence
 Total Gaseous Liquid Column HT (TVD) 21 ft
 Equivalent Gas Free Liquid HT (TVD) 21 ft

Acoustic Test

Group: Sawyer Well: CURRY 3-32 (acquired on: 09/07/12 10:36:52)



Acoustic Velocity 1271.83 ft/s Joints counted 135
 Joints Per Second 20.3559 jts/sec Joints to liquid level 144.343
 Depth to liquid level 4509.29 ft Filter Width 18.0401
 Automatic Collar Count Yes Time to 1st Collar 0.248 6.88