



KANSAS CORPORATION COMMISSION 1095044
OIL & GAS CONSERVATION DIVISION

Form ACO-1

June 2009

Form Must Be Typed

Form must be Signed

All blanks must be Filled

WELL COMPLETION FORM
WELL HISTORY - DESCRIPTION OF WELL & LEASE

OPERATOR: License # _____

Name: _____

Address 1: _____

Address 2: _____

City: _____ State: _____ Zip: _____ + _____

Contact Person: _____

Phone: (_____) _____

CONTRACTOR: License # _____

Name: _____

Wellsite Geologist: _____

Purchaser: _____

Designate Type of Completion:

- New Well Re-Entry Workover
- Oil WSW SWD SIOW
- Gas D&A ENHR SIGW
- OG GSW Temp. Abd.
- CM (Coal Bed Methane)
- Cathodic Other (Core, Expl., etc.): _____

If Workover/Re-entry: Old Well Info as follows:

Operator: _____

Well Name: _____

Original Comp. Date: _____ Original Total Depth: _____

- Deepening Re-perf. Conv. to ENHR Conv. to SWD
- Conv. to GSW
- Plug Back: _____ Plug Back Total Depth _____
- Commingled Permit #: _____
- Dual Completion Permit #: _____
- SWD Permit #: _____
- ENHR Permit #: _____
- GSW Permit #: _____

Spud Date or Recompletion Date Date Reached TD Completion Date or Recompletion Date

API No. 15 - _____

Spot Description: _____

_____ - _____ - _____ Sec. _____ Twp. _____ S. R. _____ East West

_____ Feet from North / South Line of Section

_____ Feet from East / West Line of Section

Footages Calculated from Nearest Outside Section Corner:

- NE NW SE SW

County: _____

Lease Name: _____ Well #: _____

Field Name: _____

Producing Formation: _____

Elevation: Ground: _____ Kelly Bushing: _____

Total Depth: _____ Plug Back Total Depth: _____

Amount of Surface Pipe Set and Cemented at: _____ Feet

Multiple Stage Cementing Collar Used? Yes No

If yes, show depth set: _____ Feet

If Alternate II completion, cement circulated from: _____

feet depth to: _____ w/ _____ sx cmt.

Drilling Fluid Management Plan

(Data must be collected from the Reserve Pit)

Chloride content: _____ ppm Fluid volume: _____ bbls

Dewatering method used: _____

Location of fluid disposal if hauled offsite: _____

Operator Name: _____

Lease Name: _____ License #: _____

Quarter _____ Sec. _____ Twp. _____ S. R. _____ East West

County: _____ Permit #: _____

AFFIDAVIT

I am the affiant and I hereby certify that all requirements of the statutes, rules and regulations promulgated to regulate the oil and gas industry have been fully complied with and the statements herein are complete and correct to the best of my knowledge.

Submitted Electronically

KCC Office Use ONLY

- Letter of Confidentiality Received
Date: _____
- Confidential Release Date: _____
- Wireline Log Received
- Geologist Report Received
- UIC Distribution
- ALT I II III Approved by: _____ Date: _____



1095044

Operator Name: _____ Lease Name: _____ Well #: _____

Sec. _____ Twp. _____ S. R. _____ East West County: _____

INSTRUCTIONS: Show important tops and base of formations penetrated. Detail all cores. Report all final copies of drill stems tests giving interval tested, time tool open and closed, flowing and shut-in pressures, whether shut-in pressure reached static level, hydrostatic pressures, bottom hole temperature, fluid recovery, and flow rates if gas to surface test, along with final chart(s). Attach extra sheet if more space is needed. Attach complete copy of all Electric Wire-line Logs surveyed. Attach final geological well site report.

Drill Stem Tests Taken <input type="checkbox"/> Yes <input type="checkbox"/> No <i>(Attach Additional Sheets)</i> Samples Sent to Geological Survey <input type="checkbox"/> Yes <input type="checkbox"/> No Cores Taken <input type="checkbox"/> Yes <input type="checkbox"/> No Electric Log Run <input type="checkbox"/> Yes <input type="checkbox"/> No Electric Log Submitted Electronically <input type="checkbox"/> Yes <input type="checkbox"/> No <i>(If no, Submit Copy)</i> List All E. Logs Run:	<input type="checkbox"/> Log Formation (Top), Depth and Datum <input type="checkbox"/> Sample Name Top Datum
---	---

CASING RECORD <input type="checkbox"/> New <input type="checkbox"/> Used							
Report all strings set-conductor, surface, intermediate, production, etc.							
Purpose of String	Size Hole Drilled	Size Casing Set (In O.D.)	Weight Lbs. / Ft.	Setting Depth	Type of Cement	# Sacks Used	Type and Percent Additives

ADDITIONAL CEMENTING / SQUEEZE RECORD				
Purpose:	Depth Top Bottom	Type of Cement	# Sacks Used	Type and Percent Additives
_____ Perforate _____ Protect Casing _____ Plug Back TD _____ Plug Off Zone				

Shots Per Foot	PERFORATION RECORD - Bridge Plugs Set/Type Specify Footage of Each Interval Perforated	Acid, Fracture, Shot, Cement Squeeze Record <i>(Amount and Kind of Material Used)</i>	Depth

TUBING RECORD: Size: _____ Set At: _____ Packer At: _____ Liner Run: Yes No

Date of First, Resumed Production, SWD or ENHR. _____ Producing Method: Flowing Pumping Gas Lift Other *(Explain)* _____

Estimated Production Per 24 Hours	Oil Bbls.	Gas Mcf	Water Bbls.	Gas-Oil Ratio	Gravity
-----------------------------------	-----------	---------	-------------	---------------	---------

DISPOSITION OF GAS: <input type="checkbox"/> Vented <input type="checkbox"/> Sold <input type="checkbox"/> Used on Lease <i>(If vented, Submit ACO-18.)</i>	METHOD OF COMPLETION: <input type="checkbox"/> Open Hole <input type="checkbox"/> Perf. <input type="checkbox"/> Dually Comp. <input type="checkbox"/> Commingled <i>(Submit ACO-5)</i> <input type="checkbox"/> Other <i>(Specify)</i> _____ <input type="checkbox"/> Other <i>(Specify)</i> _____	PRODUCTION INTERVAL: _____ _____
--	---	---

Form	ACO1 - Well Completion
Operator	Carrie Exploration & Development, a General Partnership
Well Name	Sieker C-2
Doc ID	1095044

Tops

Name	Top	Datum
TOPEKA	2625	-844
HEEBNER SHALE	2886	-1105
DOUGLAS SHALE	2918	-1137
BROWN LIME	3012	-1231
LKC	3030	-1249
BKC	3282	-1501
ARBUCKLE	3300	-1519
RTD	3400	-1619
LTD	3395	-1614

OPERATOR

Company: CARRIE EXPLORATION and DEVELOPMENT
 Address: 210 W 22nd Street
 HAYS, KANSAS 67601

Contact Geologist: RON HEROLD
 Contact Phone Nbr: 913-961-2760
 Well Name: SIEKER # C-2
 Location: NE NE SW NW Sec.35-19s-11w API: 15-009-25,750-00-00
 Pool: INFIELD Field: CHASE-SILICA
 State: KANSAS Country: USA

Scale 1:240 Imperial

Well Name: SIEKER # C-2
 Surface Location: NE NE SW NW Sec.35-19s-11w
 Bottom Location:
 API: 15-009-25,750-00-00
 License Number: 6768
 Spud Date: 9/15/2012 Time: 3:00 PM
 Region: BARTON COUNTY
 Drilling Completed: 9/21/2012 Time: 11:28 PM
 Surface Coordinates: 3711' FSL & 4019' FEL
 Bottom Hole Coordinates:
 Ground Elevation: 1769.00ft
 K.B. Elevation: 1781.00ft
 Logged Interval: 2200.00ft To: 3400.00ft
 Total Depth: 3400.00ft
 Formation: ARBUCKLE
 Drilling Fluid Type: CHEMICAL/FRESH WATER GEL

SURFACE CO-ORDINATES

Well Type: Vertical
 Longitude: Latitude:
 N/S Co-ord: 3711' FSL
 E/W Co-ord: 4019' FEL

LOGGED BY

Company: SOLUTIONS CONSULTING
 Address: 108 W 35TH
 HAYS, KS 67601

Phone Nbr: (785) 639-1337
 Logged By: Geologist Name: HERB DEINES

CONTRACTOR

Contractor: SOUTHWIND DRILLING INC.
 Rig #: 70
 Rig Type: MUD ROTARY
 Spud Date: 9/15/2012 Time: 3:00 PM
 TD Date: 9/21/2012 Time: 11:28 PM
 Rig Release: 9/22/2012 Time: 8:00 PM

ELEVATIONS

K.B. Elevation: 1781.00ft Ground Elevation: 1769.00ft
 K.B. to Ground: 12.00ft

NOTES

DECISION BY ALL PARTIES TO RUN CASING TO FURTHER TEST AND DEVELOP ARBUCKLE AND LANSING-KANSAS CITY ZONES OF INTEREST BASED ON FAVORABLE STRUCTURE AND LOG ANALYSIS.

WELL LOGGED BY PIONEER ENERGY SERVICES: DUAL INDUCTION LOG, DUAL COMPENSATED POROSITY LOG AND MICRORESISTIVITY LOG

DRILL STEM TESTING BY SUPERIOR TESTERS ENTERPRISES,LLC- 2 DSTS

FORMATION TOPS SUMMARY AND CHRONOLOGY OF DAILY ACTIVITY

SEIKER C # 2
3711' FSL & 4029' FEL, NW/4
Sec.35-19s-11w
1769' GL 1781' KB

<u>FORMATION</u>	<u>SAMPLE TOPS</u>	<u>LOG TOPS</u>
Topeka	2630- 849	2625- 844
Heebner Shale	2894-1113	2886-1105
Toronto	2913-1132	2903-1122
Douglas Shale	2925-1144	2918-1137
Brown Lime	3017-1236	3012-1231
LKC	3038-1257	3030-1249
BKC	3288-1507	3282-1501
Arbuckle	3304-1523	3300-1519
RTD	3400-1619	
LTD		3395-1614

SUMMARY OF DAILY ACTIVITY

9-15-12 RU, Spud, set 8 5/8" surface casing to 242.8' with 175 sacks
Common, 2 %Gel, 3%CC, plug down 9:00 PM, Slope ½ degree

9-16-12 352', drilling

9-17-12 1227', drilling, pump problems

9-18-12 1887', drilling, mud up 2100' for samples at 2250'


9-19-12 2700', drilling

9-20-12 3115', drilling, short trip 25 stands, DST # 1, 3090'-3115'

9-21-12 3300', drilling, CFS, DST # 2, 3284'-3308', RTD 11:28PM

9-22-12 3400', logging, run production casing, plug down 8:00PM

DST # 1 TEST SUMMARY

	DRILL STEM TEST REPORT	
	Carrie Exploration & Development	35-19-11 Barton
	210 W 22nd Hays KS 67601	Seiker c-2
ATTN: Herb Deines	Job Ticket: 17811 DST#: 1	
	Test Start: 2012.09.20 @ 08:47:00	

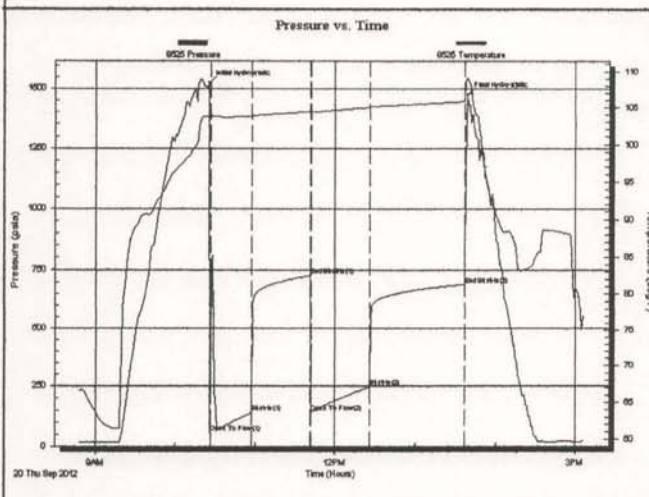
GENERAL INFORMATION:

Formation: Lansing " F "	Test Type: Conventional Bottom Hole (Initial)
Deviated: No Whipstock: ft (KB)	Tester: Jared Scheck
Time Tool Opened: 10:26:30	Unit No: 3320-Great Bend-
Time Test Ended: 15:06:30	Reference Elevations: 1781.00 ft (KB)
Interval: 3090.00 ft (KB) To 3115.00 ft (KB) (TVD)	1769.00 ft (CF)
Total Depth: 3115.00 ft (KB) (TVD)	KB to GR/CF: 12.00 ft
Hole Diameter: 7.88 inches Hole Condition: Poor	

Serial #: 8525

Press@RunDepth: 248.37 psia @ ft (KB)	Capacity: 5000.00 psia
Start Date: 2012.09.20	End Date: 2012.09.20
Start Time: 08:47:00	End Time: 15:06:30
	Last Calib.: 2012.09.20
	Time On Btmr: 2012.09.20 @ 10:25:30
	Time Off Btmr: 2012.09.20 @ 13:39:00

TEST COMMENT: 1st Opening 30 Minutes-Fair blow built bottom of bucket in 15 minutes
 1st Shut-in 45 Minutes-No blow back
 2nd Opening 45 Minutes-Fair blow built bottom of bucket in 15 minutes
 2nd Shut-in 60 Minutes-No blow back



PRESSURE SUMMARY			
Time (Min.)	Pressure (psia)	Temp (deg F)	Annotation
0	1522.80	103.76	Initial Hydro-static
1	54.87	103.68	Open To Flow (1)
32	140.11	103.80	Shut-in(1)
76	723.84	104.45	End Shut-in(1)
77	140.39	104.39	Open To Flow (2)
121	248.37	104.99	Shut-in(2)
191	688.36	105.83	End Shut-in(2)
194	1476.15	108.89	Final Hydro-static

Recovery		
Length (ft)	Description	Volume (bbl)
420.00	water	5.89
0.00	Chlorides 170,000	0.00

Gas Rates			
	Choke (inches)	Pressure (psia)	Gas Rate (Mcfd)

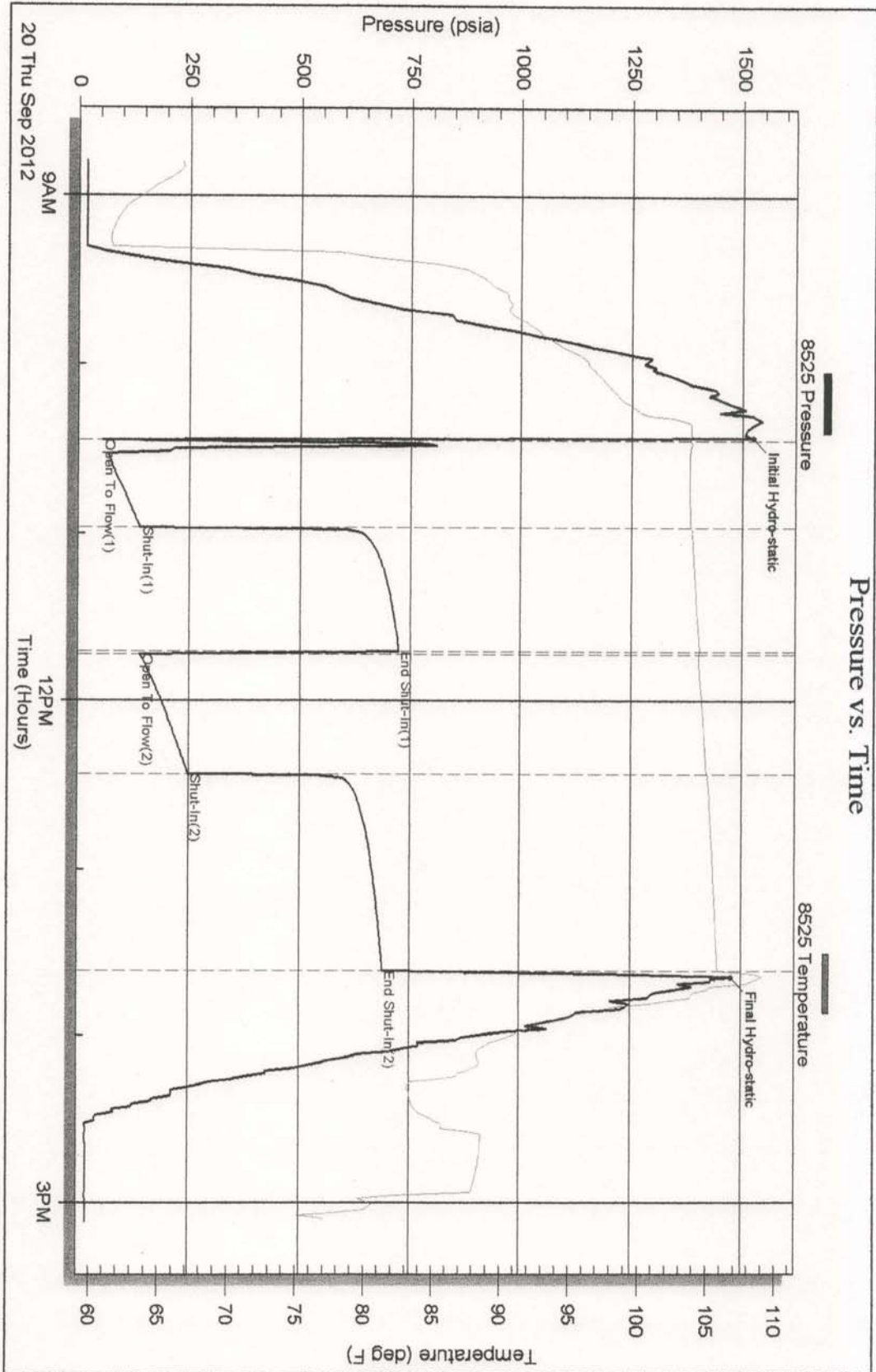
DST # 1 EXPANDED CHART

Serial #: 8525

Carrie Exploration & Development

Selker c-2

DST Test Number: 1




Superior Testers Enterprises LLC

Ref. No: 17811

Printed: 2012.09.20 @ 13:24:21

DST # 2 TEST SUMMARY

	DRILL STEM TEST REPORT	
	Carrie Exploration & Development	35-19-11 Barton
	210 W 22nd Hays KS 67601	Seiker c-2
ATTN: Herb Deines	Job Ticket: 17812	DST#: 2
	Test Start: 2012.09.21 @ 11:54:00	

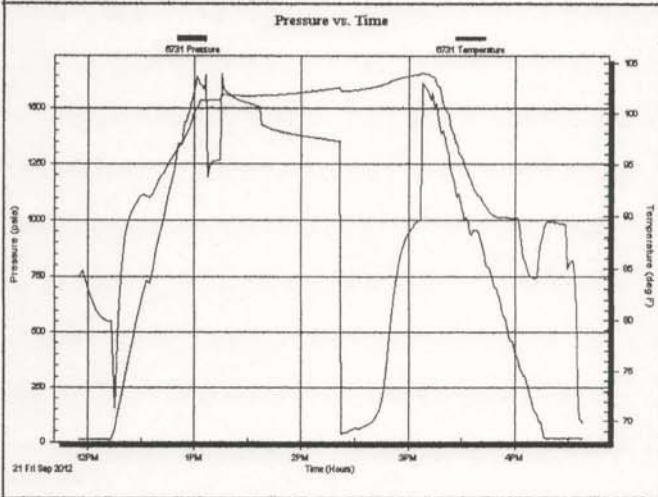
GENERAL INFORMATION:

Formation: Arbuckle	Test Type: Conventional Bottom Hole (Initial)
Deviated: No Whipstock: ft (KB)	Tester: Jared Scheck
Time Tool Opened: 13:06:30	Unit No: 3320-Great Bend-30
Time Test Ended: 16:37:30	Reference Elevations: 1781.00 ft (KB)
Interval: 3284.00 ft (KB) To 3308.00 ft (KB) (TVD)	1769.00 ft (CF)
Total Depth: 3308.00 ft (KB) (TVD)	KB to GR/CF: 12.00 ft
Hole Diameter: 7.88 inches Hole Condition: Fair	

Serial #: 8525

Press@RunDepth: psia @ ft (KB)	Capacity: 5000.00 psia
Start Date: 2012.09.21 End Date: 2012.09.21	Last Calib.: 2012.09.21
Start Time: 11:54:00 End Time: 16:37:30	Time On Btm:
	Time Off Btm:

TEST COMMENT: 1st Opening 30 Minutes-Very weak surface blow did not build
 1st Shut-in 45 Minutes-No blow back
 2nd Opening 15 Minutes-Very weak blow built 1 inch into water
 2nd Shut-in 30 Minutes-No blow back



PRESSURE SUMMARY			
Time (Min.)	Pressure (psia)	Temp (deg F)	Annotation

Recovery		
Length (ft)	Description	Volume (bbl)

Gas Rates			
	Choke (Inches)	Pressure (psia)	Gas Rate (Mcf/d)

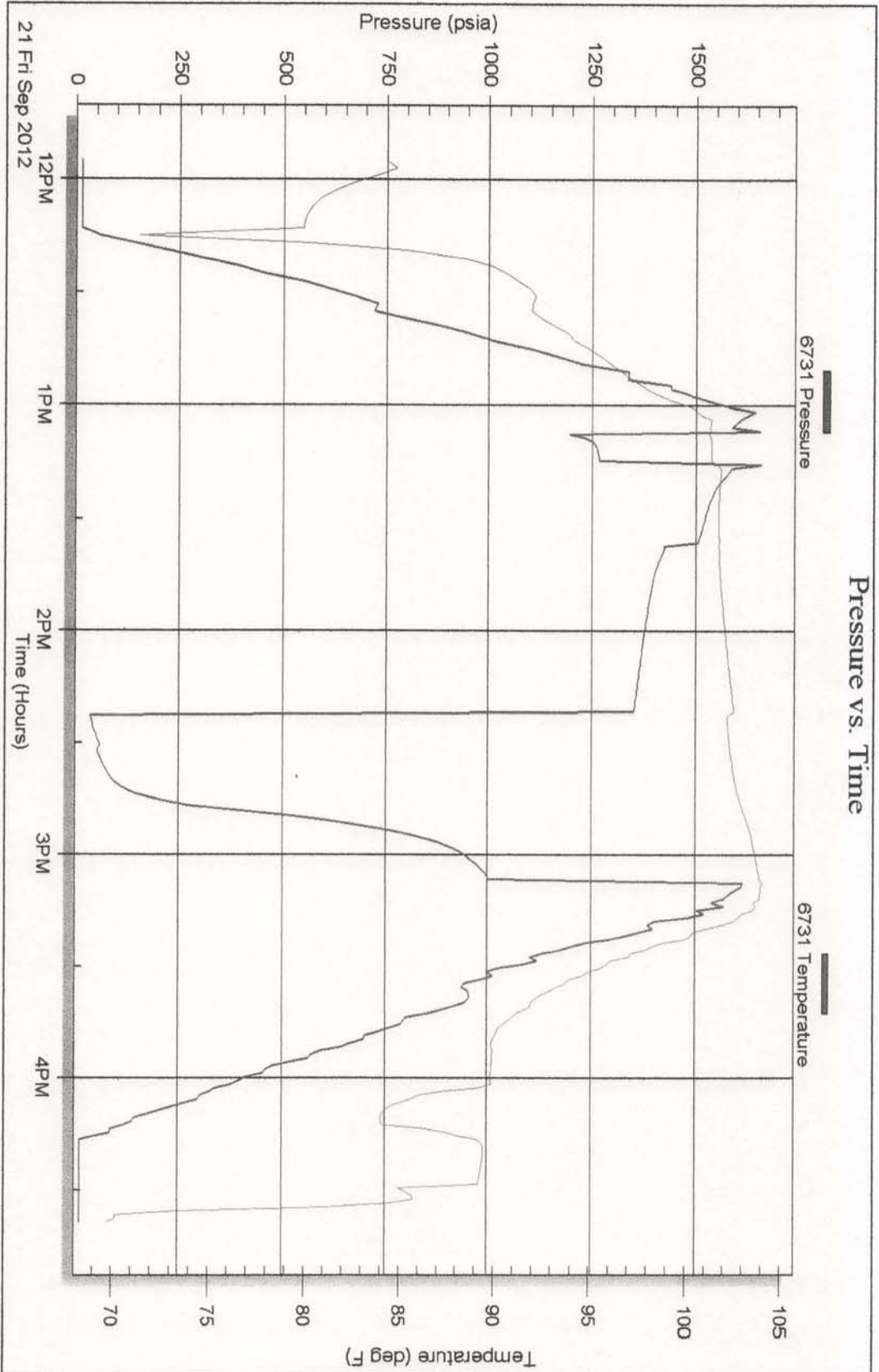
DST# 2 EXPANDED CHART

Serial #: 8525

Carrie Exploration & Development

Selker c-2

DST Test Number: 2










Superior Testers Enterprises LLC

Ref. No: 17812

Printed: 2012.09.21 @ 14:57:25

ROCK TYPES

 Clystgy	 Lmst fw<7	 shale, gry	 Ss
 Congl	 Lmst fw>7	 Carbon Sh	 Lscongl
 Dolprim	 shale, grn	 shale, red	

ACCESSORIES

MINERAL

- ▲ Chert, dark
- P Pyrite
- △ Chert White

FOSSIL

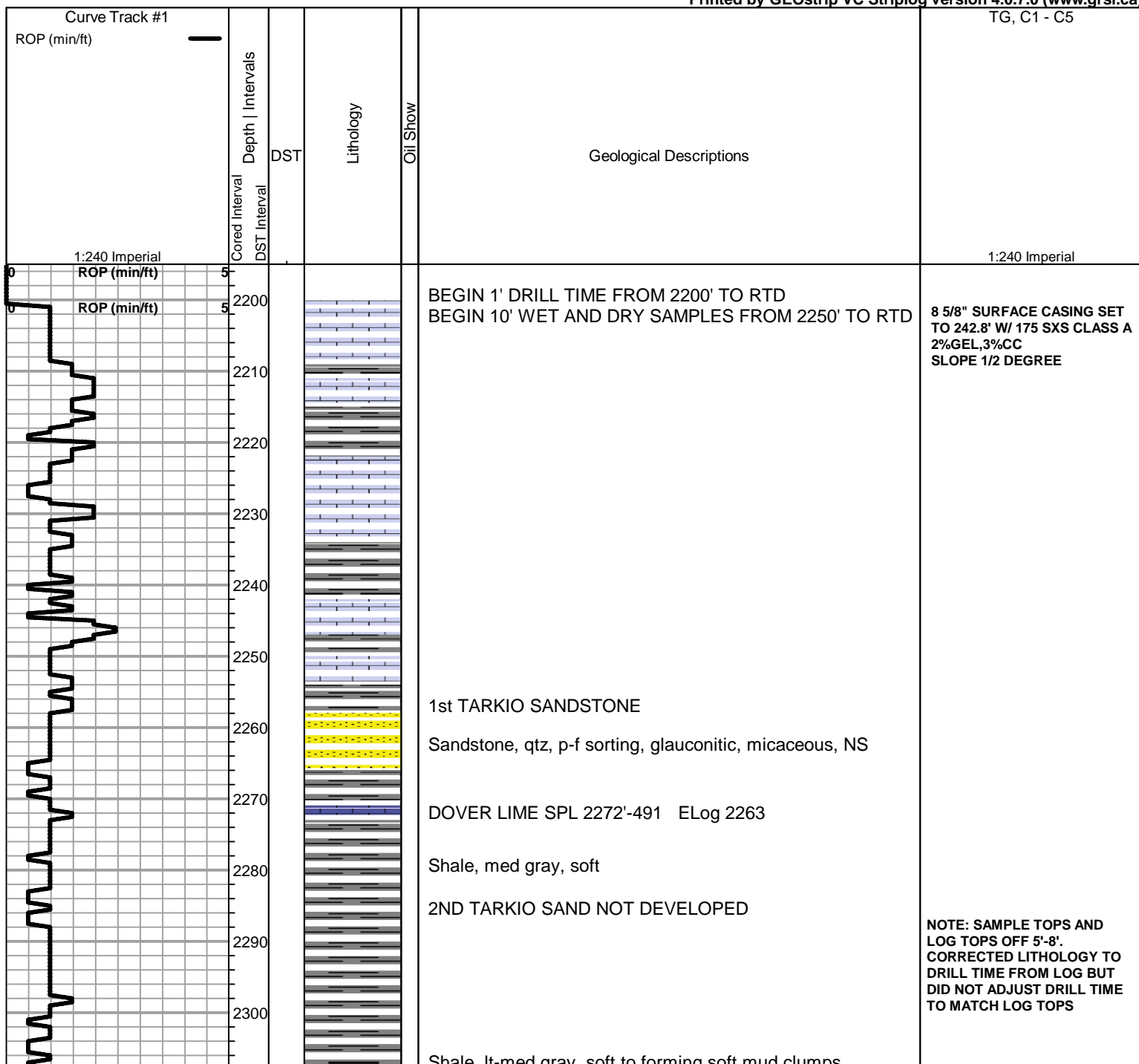
- Oolite
- ⊕ Oomoldic

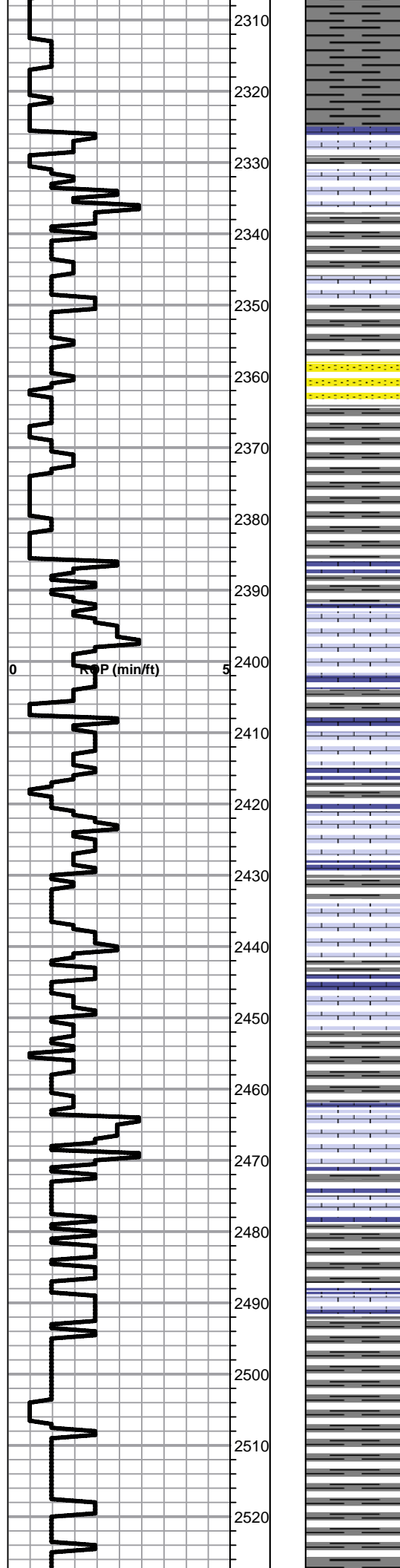
OTHER SYMBOLS

DST

- DST Int
- DST alt
- Core

Printed by GEOstrip VC Striplog version 4.0.7.0 (www.grsi.ca)





TARKIO (STOTLER) LIME SPL 2324-543 ELOG 2317

Lime, crm-tan, fnxln, chalk in part

Lime, crm-tan, fnxln, fossil fragments

3RD TARKIO SAND

Sandstone, VF grain, poorly sorted, gritty, glauconitic, mica flakes, NS

Shale, lt gray, soft blocky to forming soft mud clumps

Lime, tan-brn, fnxln, fossiliferous in brn lime, chalk in part

Lime, med-dark brn, fossiliferous

Lime, crm-tan, fnxln

Lime, med brn, fnxln

Lime, tan-brn-grayish brn, fnxln, slightly fossiliferous

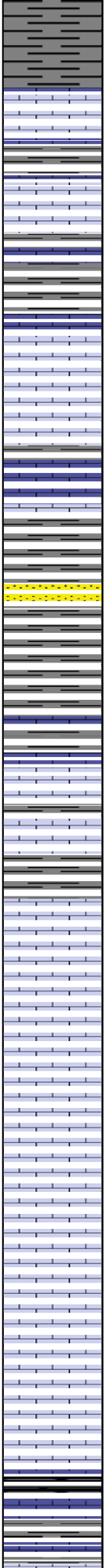
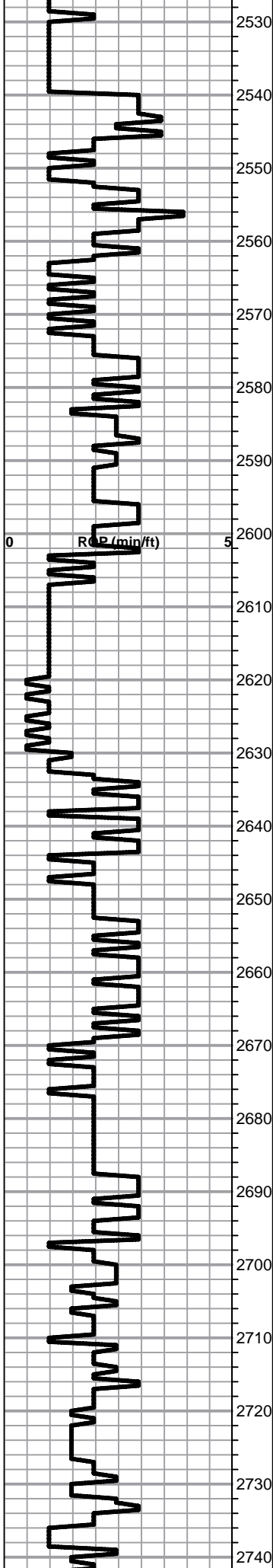
Lime, med brn, fn-vfxln, slightly fossiliferous

Lime, lt-med brn, fnxln, microfossiliferous

Lime, lt-med brn, fn-vfxln, slightly fossiliferous

Lime, grayish brn-med brn, fn-vfxln, fusulinids

Shale, lt gray, soft to forming soft mud



2530

2540 Lime, lt-dark brn-grayish brn, fnxln, fusulinids

2550 Lime, lt-dark brn, fnxln, fossils in dark brn lime.

2560 Lime, tan-grayish brn, fnxln, slightly fossiliferous

2570

2580 Lime, tan-med brn, fnxln, slightly fossiliferous

2590

2600 Lime, lt-med brn, fnxln, fossiliferous-fusulinids

2605 Sandstone, qtz, poorly sorted, glauconitic, mica flakes, NS

2610

2620 Shale, lt-med gray, soft blocky

TOPEKA SPL 2630-849 ELOG 2625

2630 Lime, tan-gray, fnxln, slightly fossiliferous, shaley in part

2640 Lime, lt-med brn, fnxln, slightly fossiliferous

2650 Lime, crm-tan, fnxln, slightly fossiliferous, slight bed chalk

2660 Lime, brnish gray, fnxln, fossiliferous

2670 Lime, crm-tan-lt brn, fnxln-granular in part, bed chalk NS

2680 Lime, crm-tan-med brn, fnxln, bed chalk in part

2690 Lime, lt-med brn, fnxln, slightly fossiliferous

2700 Lime, lt-med brn-grayish brn, fnxln, slightly fossiliferous

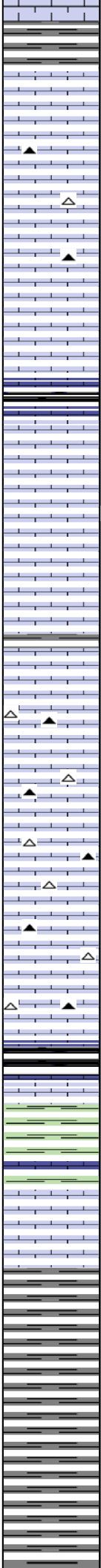
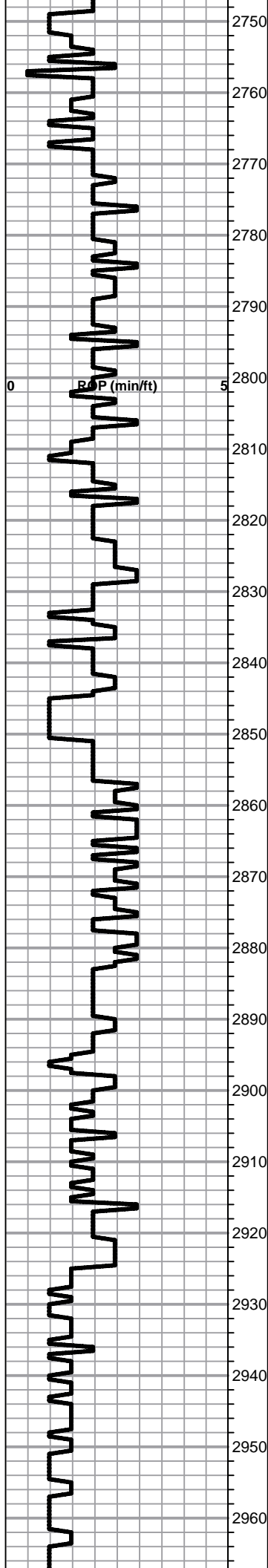
2710 Lime, lt-med brn-grayish brn, fnxln, slightly fossiliferous

2720 Lime, crm-lt brn, fnxln, slightly fossiliferous

2730 Lime, lt-med brn, fnxln, slightly fossiliferous, fusulinids
Shale, black carbonaceous

2740 Lime, med brn-grayish brn, fnxln

Lime, offwhite-lt brn, fnxln, slightly fossiliferous



Lime, crm-lt brn, fnxln-granular in part

Lime, lt brn-lt grayish brn, fnxln, slightly fossiliferous, slight bed chalk

Lime, crm-lt brn, fnxln, white and brn chert

Lime, lt-dark brn, fnxln, slightly fossiliferous

Lime, med brn, fnxln

Shale, black carbonaceous

Lime, tan-lt brn, fnxln-granular,

Lime, tan-lt brn, fnxln-granular with fine oolitic material with lt show of free oil, no odor, light scattered staining.

SHOW LAGS BACK TO LOG INTERVAL 2810-15

Lime, crm-lt brn, fnxln-granular

Lime, tan-lt brn, fnxln, slightly fossiliferous in part

Lime, crm-lt brn, fn-vfxln, bed chalk in part

Lime, lt=med brn, fnxln, slightly fossiliferous

Lime, lt-med brn, fnxln, bed chalk in part, slight fossils content.

Lime, med brn-grayish brn, fnxln, slightly fossilifeorus

HEEBNER SHALE SPL 2894-1113 ELog 2886

Shale, black carbonaceous. fissile, blocky

Lime, med brn, fnxln, fossiliferous

Shale, dove gray-lime green, soft mud

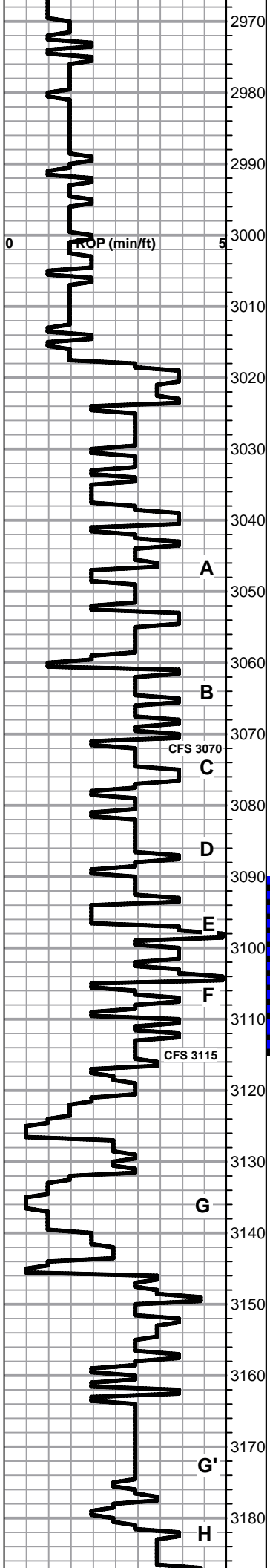
TORONTO SPL 2913-1132 ELog 2903

Lime, crm-tan, fnxln, slight chalk in part, NS

DOUGLAS SHALE SPL 2925-1144 ELog 2918

Shale, lt-med gray, firm, blocky

Shale, lt-med gray, soft blocky



Very little sand noted in samples. Few clusters found were fine grained, poorly sorted, gritty chips with saturated staining.

BROWN LIME SPL 3017-1236 ELog 3012

Lime, lt-med brn, fnxln, fossiliferous

Shale, lt-med gray, soft, pyritic

LKC SPL 3038-1257 ELog 3030

Lime, lt brn, fnxln

Lime, lt brn, fnxln with scattered oolitic material, NS

Lime, crm-tan-grayish brn, fnxln

Lime, crm-tan, fnxln, hard on crush

Lime, med brn, fnxln, fossiliferous

Lime, med brn, fnxln

Lime, med brn, fnxln

Lime, med-dark brn, fnxln

Lime, med brn, fnxln

Lime, lt-med brn, fnxln

Lime, lt-med brn, oolitic/oolmoldic, scattered lt stain, no odor, lot of barren material.

Lime, lt-med brn, oolitic/oolmoldic, mostly barren, slight chalk

Lime, lt-med brn, fnxln

Lime, lt-dark brn, fn-vfxln, slight bed chalk, slightly fossiliferous

Shale, gray-black carbonaceous
Lime, lt-med brn, fnxln

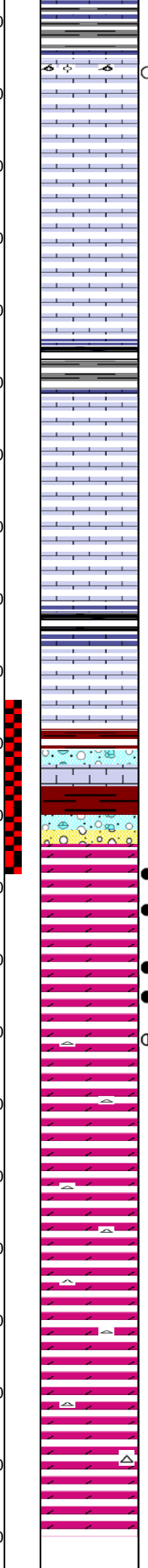
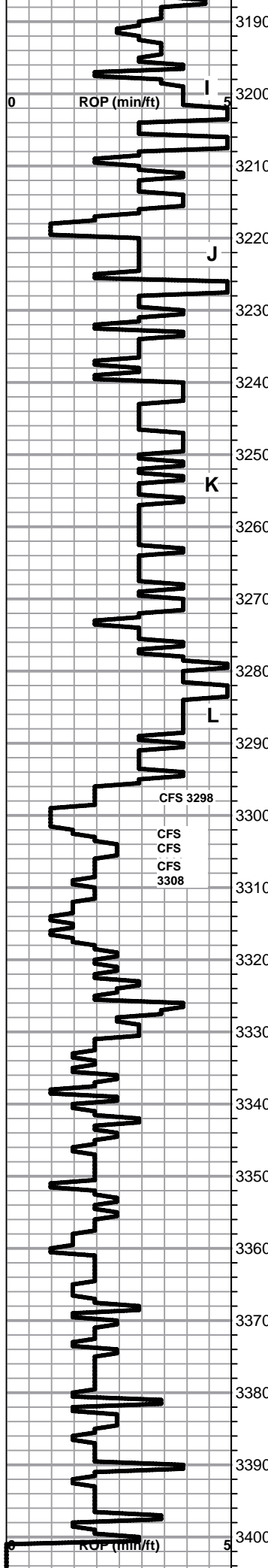
Lime, med brn-dark brn, fnxln, bed chalk, 1 chip with oil stain, no odor, NFO

SHORT TRIP @ 3023'
PULLED 25 STANDS

DST # 1 3090' TO 3115' SEE
HEADER FOR TEST SUMMARY

THE SHOW LAGS BACK TO
THE LOG INTERVAL 3117-21

SHOW LAGS TO LOG
INTERVAL 3171'-3174'



3190 Lime, crm-tan, fnxln, chalk w/ few chips of oolitic lime with trace of oil stain in interoolitic porosity, no odor, NFO

3200 Lime, lt-med brn, fn-vfxln, slightly fossiliferous

3210 Lime, lt-med brn, fnxln, bed chalk in part, NS

3220 Lime, crm-tan, fnxln, bed chalk, NS

3230 Shale, gray-black, blocky with slivers

3240 Lime, crm-tan, fnxln, bed chalk

3250 Lime, lt-med brn, fn-vfxln, bed chalk, slightly fossiliferous

3260 Lime, lt-brn-lt grayish brn, fn-vfxln, slight chalk in part

3270 Shale, gray to black

3280 Lime, med brn, fn-vfxln

BKC SPL 3288-1507 ELog 3282

3290 Shale, reddish brn, soft grading into lt gray soft shale

3300 Shale, reddish brn, chert nodules grading into lime mix

ARBUCKLE SPL 3304-1523 ELog 3300

3310 Dolomite, wht-lt brn, fm-cxln, intercrystalline porosity, good odor with SFO on break, saturated staining.

3320 Dolomite, crm-lt brn, med-cxln, good odor, saturated stain

3330 Dolomite, med brn, fn-cxln, fair odor, scattered to saturated staining

3340 Dolomite, lt brn, fn-cxln, decreasing odor and staining

3350 Dolomite, crm-lt brn, fnxln, increasing white chert content

3360 Dolomite, crm, fn-cxln

3370 Dolomite, crm, fn-cxln

3380 Dolomite, crm, fn-cxln

3390 Dolomite, crm, fn-cxln

3400 Dolomite, crm, fn-cxln

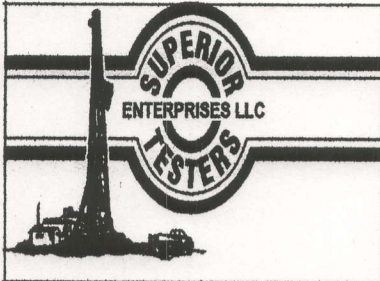
SHOW LAGS TO LOG INTERVAL 3187'-3192'

DST # 2 3284' TO 3308' SEE HEADER FOR TEST SUMMARY TOOL PLUGGED THROUGH MOST OF TEST

LOG INTERVAL 3306-14 APPEARS WET WHICH MATCHES HISTORIC PRODUCTIVE ZONE. ZONES TO PERFORATE AND TEST ARE IN LOG INTERVAL FROM 3295-3305 AND 3314-26. MAY WANT TO CONSIDER PERFORATING LOG INTERVAL FROM 3307-11 AND TESTING. IF ALL WATER, SQUEEZE ZONE WITH CEMENT BEFORE TESTING OTHER ZONES IN ARBUCKLE

5 1/2" PRODUCTION CASING SET TO 3396' W/ 145 SXS EA2. PORT COLLAR @ 1551', SWIFT TICKET # 21897

SLOPE @3400' 1 DEGREE



DRILL STEM TEST REPORT

Carrie Exploration & Development

35-19-11 Barton

210 W 22nd Hays KS 67601

Seiker c-2

Job Ticket: 17811

DST#: 1

ATTN: Herb Deines

Test Start: 2012.09.20 @ 08:47:00

GENERAL INFORMATION:

Formation: **Lansing " F "**

Deviated: No Whipstock: ft (KB)

Time Tool Opened: 10:26:30

Time Test Ended: 15:06:30

Test Type: Conventional Bottom Hole (Initial)

Tester: Jared Scheck

Unit No: 3320-Great Bend-

Interval: **3090.00 ft (KB) To 3115.00 ft (KB) (TVD)**

Reference Elevations: 1781.00 ft (KB)

Total Depth: 3115.00 ft (KB) (TVD)

1769.00 ft (CF)

Hole Diameter: 7.88 inches Hole Condition: Poor

KB to GR/CF: 12.00 ft

Serial #: 8525

Press@RunDepth: 248.37 psia @ ft (KB)

Capacity: 5000.00 psia

Start Date: 2012.09.20

End Date: 2012.09.20

Last Calib.: 2012.09.20

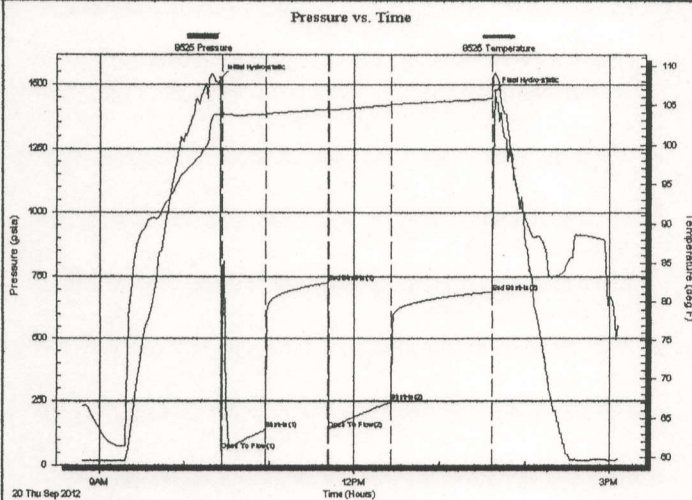
Start Time: 08:47:00

End Time: 15:06:30

Time On Btm: 2012.09.20 @ 10:25:30

Time Off Btm: 2012.09.20 @ 13:39:00

TEST COMMENT: 1st Opening 30 Minutes-Fair blow built bottom of bucket in 15 minutes
 1st Shut-in 45 Minutes-No blow back
 2nd Opening 45 Minutes-Fair blow built bottom of bucket in 15 minutes
 2nd Shut-in 60 Minutes-No blow back



PRESSURE SUMMARY

Time (Min.)	Pressure (psia)	Temp (deg F)	Annotation
0	1522.80	103.76	Initial Hydro-static
1	54.87	103.68	Open To Flow (1)
32	140.11	103.80	Shut-In(1)
76	723.84	104.45	End Shut-In(1)
77	140.39	104.39	Open To Flow (2)
121	248.37	104.99	Shut-In(2)
191	688.36	105.83	End Shut-In(2)
194	1476.15	108.89	Final Hydro-static

Recovery

Length (ft)	Description	Volume (bbl)
420.00	water	5.89
0.00	Chlorides 170,000	0.00

Gas Rates

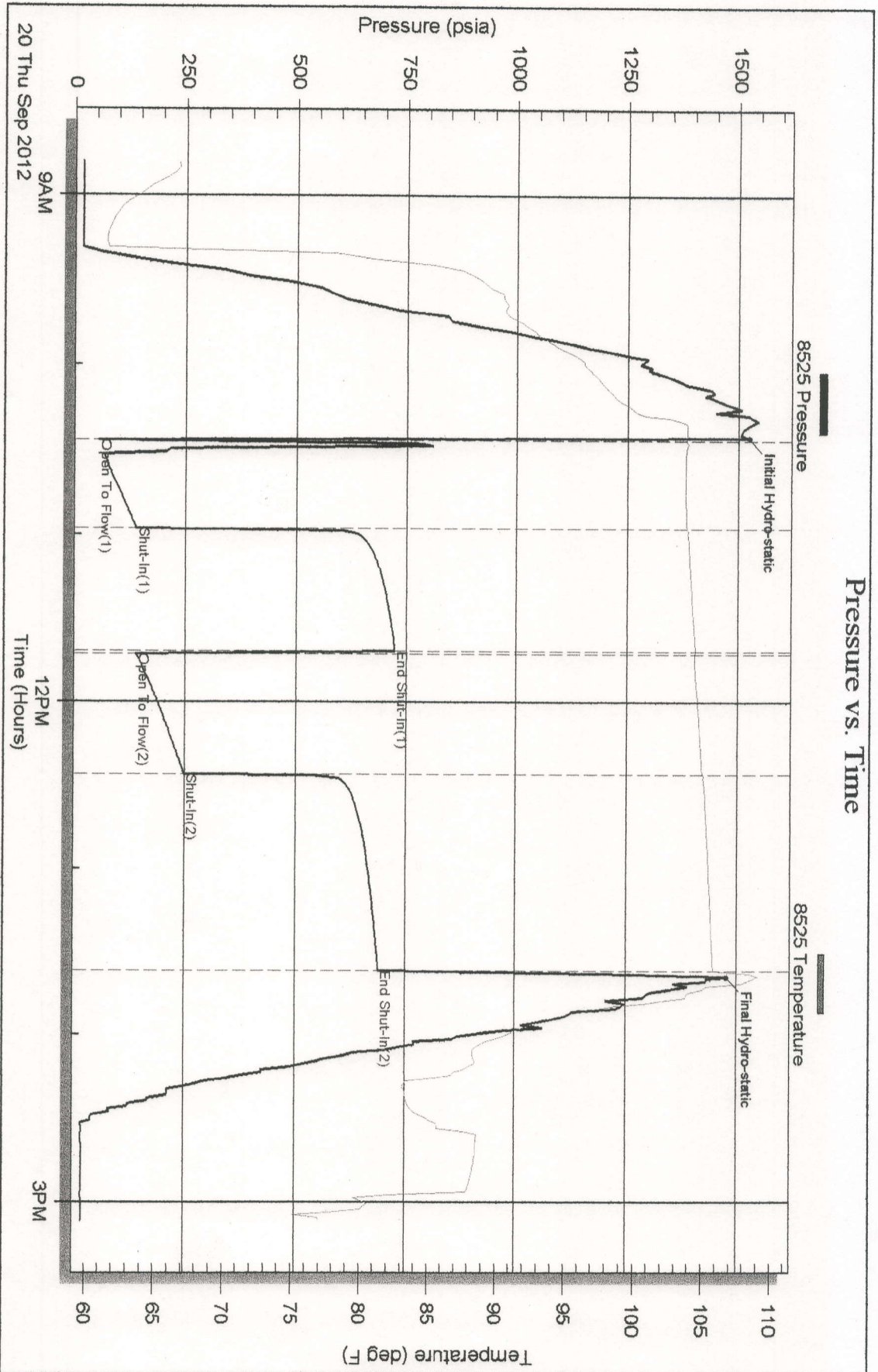
	Choke (inches)	Pressure (psia)	Gas Rate (Mcf/d)

Serial #: 8525

Carrie Exploration & Development

Seifer c-2

DST Test Number: 1

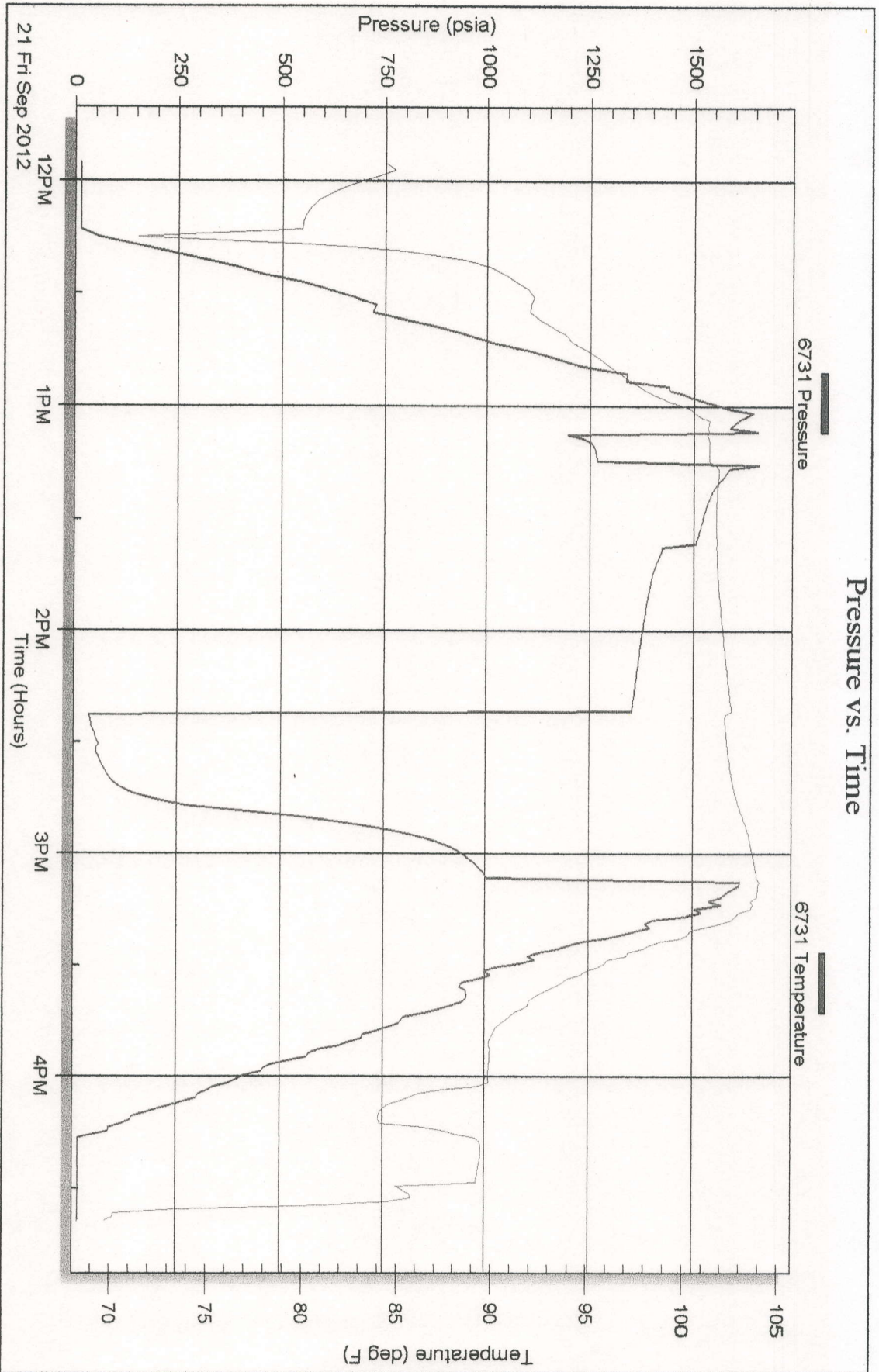


Serial #: 8525

Carrie Exploration & Development

Selker c-2

DST Test Number: 2



21 Fri Sep 2012

Superior Testers Enterprises LLC

Ref. No: 17812

Printed: 2012.09.21 @ 14:57:25

ALLIED OIL & GAS SERVICES, LLC 053734

Federal Tax I.D.# 20-5975804

REMIT TO P.O. BOX 31
RUSSELL, KANSAS 67665

SERVICE POINT:
Great Bend

DATE <u>9-15-12</u>	SEC. <u>35</u>	TWP. <u>19</u>	RANGE <u>11</u>	CALLED OUT	ON LOCATION	JOB START <u>8:30 pm</u>	JOB FINISH <u>9:00 pm</u>
LEASE <u>Slicker</u>		WELL # <u>C2</u>		LOCATION <u>Ellenwood 3 East 140 RD</u>		COUNTY <u>Barton</u>	STATE <u>KS</u>
OLD OR <u>NEW</u> (Circle one)				<u>3/4 North East into</u>			

2-01
MRE

CONTRACTOR Southwind Rig 70 OWNER Carriv Exploration

TYPE OF JOB Surface
 HOLE SIZE 12 1/4 T.D. 260
 CASING SIZE 8 3/8 24" DEPTH 256
 TUBING SIZE DEPTH
 DRILL PIPE DEPTH
 TOOL DEPTH
 PRES. MAX MINIMUM
 MEAS. LINE SHOE JOINT
 CEMENT LEFT IN CSG.
 PERFS.
 DISPLACEMENT 15.25 BBHs

CEMENT
 AMOUNT ORDERED 175 SX Class A + 38 gal + 2% Gel

COMMON	<u>175</u>	@ <u>17.90</u>	<u>3.132.80</u>
POZMIX		@	
GEL	<u>3</u>	@ <u>23.40</u>	<u>70.20</u>
CHLORIDE	<u>6</u>	@ <u>64.00</u>	<u>384.00</u>
ASC		@	

EQUIPMENT

PUMP TRUCK CEMENTER Wayne Davis
 # 224 HELPER John Campbell
 BULK TRUCK
 # 344/170 DRIVER Alan Generoux
 BULK TRUCK
 # DRIVER

HANDLING	<u>188.74</u>	@ <u>2.48</u>	<u>468.07</u>
MILEAGE	<u>8.6 x 124</u>	@ <u>2.60</u>	<u>268.32</u>

TOTAL 4.323.09

REMARKS:

Pipe on Bottom B-call circulation with Rig mud
Run 3 BBHs water Ahead
Mix 175 SX class A + 38 gal + 2% Gel
Displace 15.25 BBHs fresh water
Shut in cement did circulate

SERVICE

DEPTH OF JOB	<u>256</u>		
PUMP TRUCK CHARGE	<u>1512.35</u>		
EXTRA FOOTAGE	@		
MILEAGE	<u>Hum 12</u>	@ <u>7.70</u>	<u>92.40</u>
MANIFOLD	@		
	<u>Lum 12</u>	@ <u>4.40</u>	<u>52.80</u>

TOTAL 1657.45

CHARGE TO: Carriv Exploration

STREET _____

CITY _____ STATE _____ ZIP _____

PLUG & FLOAT EQUIPMENT

_____	@	_____
_____	@	_____
_____	@	_____
_____	@	_____
_____	@	_____

TOTAL _____

SALES TAX (If Any) 241.83

TOTAL CHARGES 5.980.52

DISCOUNT 26% 1.554.94 IF PAID IN 30 DAYS

4.425.60

PRINTED NAME Frank Rome

SIGNATURE Frank Rome

To: Allied Oil & Gas Services, LLC.
 You are hereby requested to rent cementing equipment and furnish cementer and helper(s) to assist owner or contractor to do work as is listed. The above work was done to satisfaction and supervision of owner agent or contractor. I have read and understand the "GENERAL TERMS AND CONDITIONS" listed on the reverse side.



CHARGE TO: Carrie Exploration
 ADDRESS:
 CITY, STATE, ZIP CODE:

TICKET No 21897

PAGE 1 OF 2

SERVICE LOCATIONS
 1. Hays, KS
 2. Ness City, KS
 3.
 4. REFERRAL LOCATION

WELL/PROJECT NO: C#2 LEASE: Slicker COUNTY/PARISH: Bar-Ton STATE: KS CITY:
 TICKET TYPE: SERVICE CONTRACTOR: Southwind Drilling RIG NAME/NO.:
 SALES WELL TYPE: Oil WELL CATEGORY: Development JOB PURPOSE: log string
 INVOICE INSTRUCTIONS: log string DELIVERED TO: CT location DATE: 9-22-12 OWNER: same
 ORDER NO. WELL LOCATION:

PRICE REFERENCE	SECONDARY REFERENCE/ PART NUMBER	ACCOUNTING			DESCRIPTION	MILEAGE	QTY.	UM	QTY.	UM	UNIT PRICE	AMOUNT
		LOC	ACCT	DF								
575					70 mi						6.00	420.00
578					1.20			3359'			1500.00	1500.00
221					5 gal						25.00	125.00
280					330 gal						2.50	825.00
290					2 gal						35.00	70.00
402					8 gal			5 1/2"			70.00	560.00
403					2 gal						250.00	500.00
404					1 gal						2400.00	2400.00
406					1 gal						250.00	250.00
407					1 gal						350.00	350.00
419					1 gal						200.00	200.00

LEGAL TERMS: Customer hereby acknowledges and agrees to the terms and conditions on the reverse side hereof which include, but are not limited to, PAYMENT, RELEASE, INDEMNITY, and LIMITED WARRANTY provisions.

MUST BE SIGNED BY CUSTOMER OR CUSTOMER'S AGENT PRIOR TO START OF WORK OR DELIVERY OF GOODS

DATE SIGNED: 9-22-12 TIME SIGNED: 2:00 A.M. P.M.

REMIT PAYMENT TO:

SWIFT SERVICES, INC.
 P.O. BOX 466
 NESS CITY, KS 67560
 785-798-2300

SURVEY

OUR EQUIPMENT PERFORMED WITHOUT BREAKDOWN?

WE UNDERSTOOD AND MET YOUR NEEDS?

OUR SERVICE WAS PERFORMED WITHOUT DELAY?

WE OPERATED THE EQUIPMENT AND PERFORMED JOB CALCULATIONS SATISFACTORILY?

ARE YOU SATISFIED WITH OUR SERVICE? YES NO

CUSTOMER DID NOT WISH TO RESPOND

PAGE TOTAL	AMOUNT	DIS-AGREE	UN-DECIDED	AGREE
1	2800.00			
2	4500.00			
Subtotal	11700.00			
TOTAL	12,342.35			

CUSTOMER ACCEPTANCE OF MATERIALS AND SERVICES The customer hereby acknowledges receipt of the materials and services listed on this ticket.

SWIFT OPERATOR: Nick Polak APPROVAL:

Thank You!

JOB LOG

SWIFT Services, Inc.

CUSTOMER *Carrie Exploration* WELL NO. *C#2* LEASE *Sicker* JOB TYPE *Longstring* TICKET NO. *21897*

CHART NO.	TIME	RATE (BPM)	VOLUME (BBL) (GAL)	PUMPS		PRESSURE (PSI)		DESCRIPTION OF OPERATION AND MATERIALS
				T	C	TUBING	CASING	
	1230							on loc w/FE
								RTD 3399'
								5 1/2" x 14" x 3393' x 27'
								Cent. 1-7, 56
								Back. 4, 57
								P.C. 57 @
	1630							start FE
	1850							Break Circ.
	1925	2.5	7					Plug RTT 30sks EA-2
	1930	5	0			200		start KCL flush
		5	15/0			200		start Flochek
		5	8/0			200		start KCL flush
		5	5/0			200		start EA-2 Cement 145sks EA-2
	1943		36					End Cement
								Wash P+L
								Drop L.D. Plug
	1946	6	0			200		start Displacement
	1956	5	62			250		catch Cement
	2000		82			650 1500		Land Plug
								Release Pressure
								Float Held
Thank you								
Nick, Don + Russ								



PO Box 466.
Ness City, KS 67560
Off: 785-798-2300

TICKET CONTINUATION

TICKET No. 21897

CUSTOMER Carrie Exploration

WELL #2 Sicker

DATE 9-22-12

PAGE 2 OF 2

PRICE REFERENCE	SECONDARY REFERENCE/ PART NUMBER	ACCOUNTING			TIME	DESCRIPTION	WELL				UNIT PRICE	AMOUNT	
		LOC	ACCT	DF			QTY.	UM	QTY.	UM			
325		2				Standard Cement	135	SKS			13.50	2362.50	
276		2				Flocele	50	#	1/4	#/SK	2.00	100.00	
283		2				Salt	850	#	10	%	20	170.00	
284		2				Calsteel	8	SKS	5	%	35.00	280.00	
286		2				Halad-1	80	#	1/2	%	7.50	600.00	
581		2				SERVICE CHARGE					2.00	350.00	
583		2				MILEAGE CHARGE					1.00	638.00	
							TOTAL WEIGHT	125	SKS				
							LOADED MILES	70					
							CUBIC FEET						
							TON MILES	638					

CONTINUATION TOTAL 4500.50