



**TRILOBITE
TESTING, INC.**

DRILL STEM TEST REPORT

Caerus Kansas LLC

18-17S-13W Barton

PO Box 1378
Hays, KS 67601

Hoffman 18-31

Job Ticket: 47617

DST#: 3

ATTN: JUSTIN CARTER

Test Start: 2012.07.17 @ 13:37:06

GENERAL INFORMATION:

Formation: **Lansing H & I**

Deviated: No Whipstock: ft (KB)

Time Tool Opened: 15:33:36

Time Test Ended: 22:17:36

Test Type: Conventional Bottom Hole (Reset)

Tester: Leal Cason

Unit No: 45

Interval: 3334.00 ft (KB) To 3372.00 ft (KB) (TVD)

Reference Elevations: 1963.00 ft (KB)

Total Depth: 3372.00 ft (KB) (TVD)

1953.00 ft (CF)

Hole Diameter: 7.88 inches Hole Condition: Good

KB to GR/CF: 10.00 ft

Serial #: 6798 Inside

Press @ Run Depth: 29.43 psig @ 3335.00 ft (KB)

Capacity: 8000.00 psig

Start Date: 2012.07.17

End Date:

2012.07.17

Last Calib.:

2012.07.17

Start Time:

13:37:07

End Time:

22:17:36

Time On Btm:

2012.07.17 @ 15:32:51

Time Off Btm:

2012.07.17 @ 20:36:21

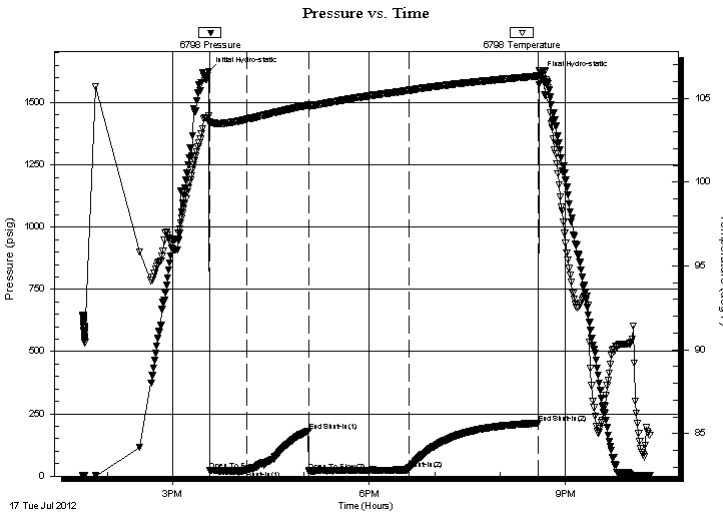
TEST COMMENT: IF: Weak 1/2 inch Blow

IS: No Blow Back

FF: Fair Blow, BOB in 45 minutes

FS: No Blow Back

PRESSURE SUMMARY



Time (Min.)	Pressure (psig)	Temp (deg F)	Annotation
0	1625.95	103.95	Initial Hydro-static
1	22.43	103.50	Open To Flow (1)
35	25.20	103.75	Shut-In(1)
92	180.52	104.59	End Shut-In(1)
92	18.85	104.53	Open To Flow (2)
183	29.43	105.47	Shut-In(2)
303	212.74	106.34	End Shut-In(2)
304	1608.13	106.63	Final Hydro-static

Recovery

Length (ft)	Description	Volume (bbl)
0.00	285 GIP	0.00
15.00	Muddy Water 30%M 70%W	0.21

Gas Rates

	Choke (inches)	Pressure (psig)	Gas Rate (Mcf/d)

* Recovery from multiple tests



TRILOBITE TESTING, INC.

DRILL STEM TEST REPORT

Caerus Kansas LLC

18-17S-13W Barton

PO Box 1378
Hays, KS 67601

Hoffman 18-31

Job Ticket: 47617

DST#: 3

ATTN: jUSTINcARTER

Test Start: 2012.07.17 @ 13:37:06

GENERAL INFORMATION:

Formation: **Lansing H & I**

Deviated: No Whipstock: ft (KB)

Time Tool Opened: 15:33:36

Time Test Ended: 22:17:36

Test Type: Conventional Bottom Hole (Reset)

Tester: Leal Cason

Unit No: 45

Interval: **3334.00 ft (KB) To 3372.00 ft (KB) (TVD)**

Reference Elevations: 1963.00 ft (KB)

Total Depth: 3372.00 ft (KB) (TVD)

1953.00 ft (CF)

Hole Diameter: 7.88 inches Hole Condition: Good

KB to GR/CF: 10.00 ft

Serial #: 8367 Outside

Press @RunDepth: psig @ 3335.00 ft (KB)

Capacity: 8000.00 psig

Start Date: 2012.07.17 End Date: 2012.07.17

Last Calib.: 2012.07.17

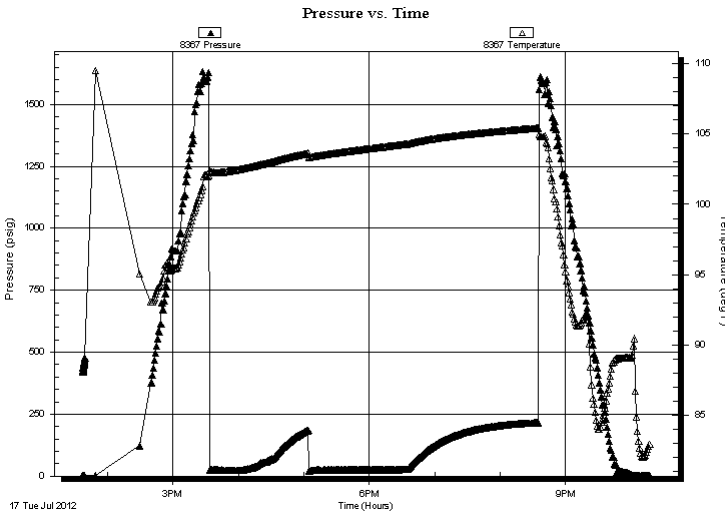
Start Time: 13:37:07 End Time: 22:17:36

Time On Btm:

Time Off Btm:

TEST COMMENT: IF: Weak 1/2 inch Blow
IS: No Blow Back
FF: Fair Blow, BOB in 45 minutes
FS: No Blow Back

PRESSURE SUMMARY



Time (Min.)	Pressure (psig)	Temp (deg F)	Annotation

Recovery

Length (ft)	Description	Volume (bbl)
0.00	285 GIP	0.00
15.00	Muddy Water 30%M 70%W	0.21

Gas Rates

Choke (inches)	Pressure (psig)	Gas Rate (Mcf/d)

* Recovery from multiple tests



**TRILOBITE
TESTING, INC.**

DRILL STEM TEST REPORT

FLUID SUMMARY

Caerus Kansas LLC

18-17S-13W Barton

PO Box 1378
Hays, KS 67601

Hoffman 18-31

Job Ticket: 47617

DST#: 3

ATTN: jUSTINcARTER

Test Start: 2012.07.17 @ 13:37:06

Mud and Cushion Information

Mud Type: Gel Chem

Cushion Type:

Oil API:

deg API

Mud Weight: 9.00 lb/gal

Cushion Length:

ft

Water Salinity:

90000 ppm

Viscosity: 46.00 sec/qt

Cushion Volume:

bbbl

Water Loss: 9.59 in³

Gas Cushion Type:

Resistivity: ohm.m

Gas Cushion Pressure:

psig

Salinity: 6000.00 ppm

Filter Cake: 0.02 inches

Recovery Information

Recovery Table

Length ft	Description	Volume bbbl
0.00	285 GIP	0.000
15.00	Muddy Water 30%M 70%W	0.210

Total Length: 15.00 ft Total Volume: 0.210 bbl

Num Fluid Samples: 0

Num Gas Bombs: 0

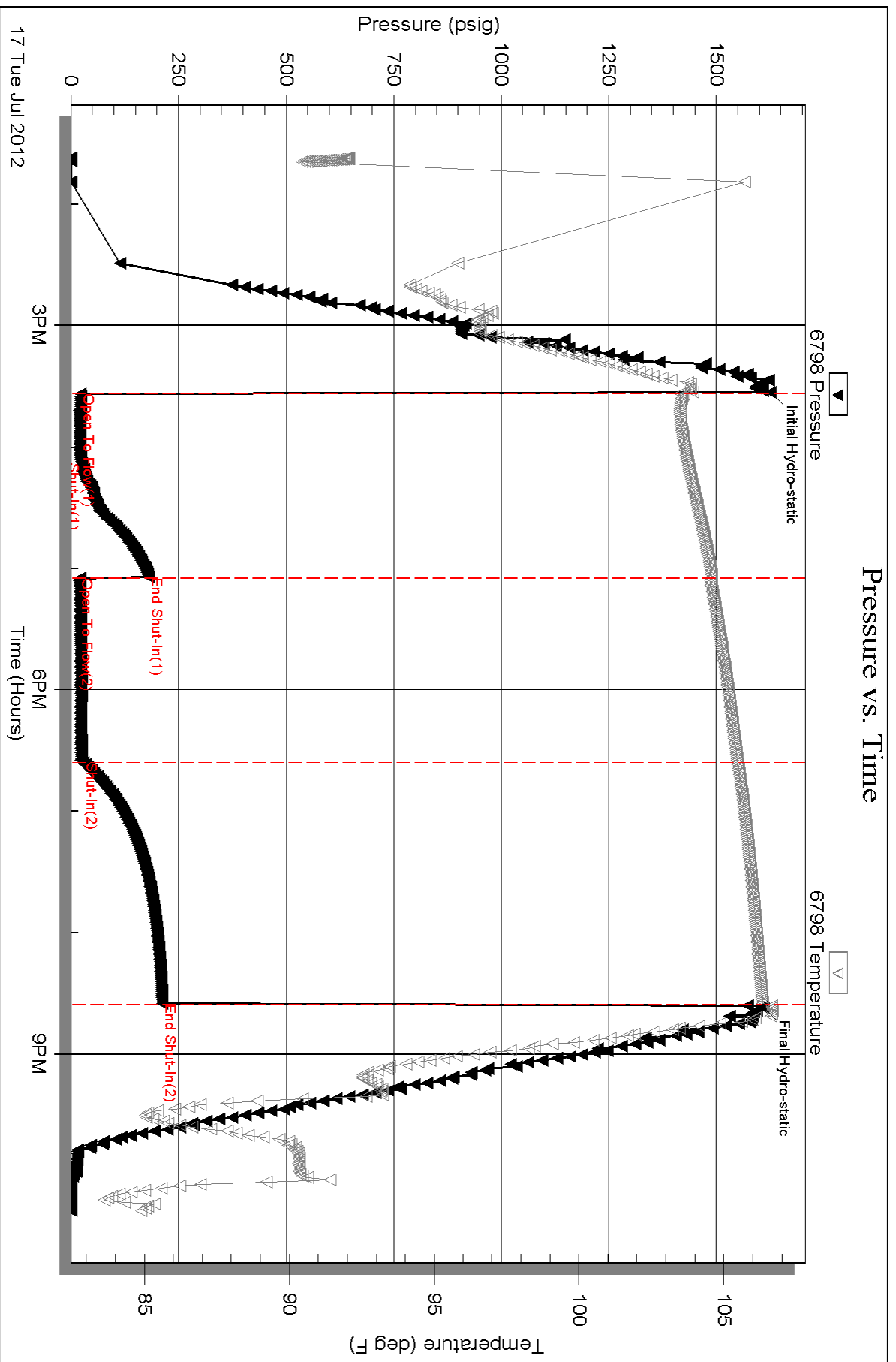
Serial #:

Laboratory Name:

Laboratory Location:

Recovery Comments: RW w as .07 @ 88 degrees

Pressure vs. Time



Serial #: 8367

Outside Caerus Kansas LLC

Hoffman 18-31

DST Test Number: 3

