



**TRILOBITE
TESTING, INC**

DRILL STEM TEST REPORT

Caerus Kansas LLC
Po Box 1378
Hays Ks 67691 + 3974
ATTN: Brian Karlin

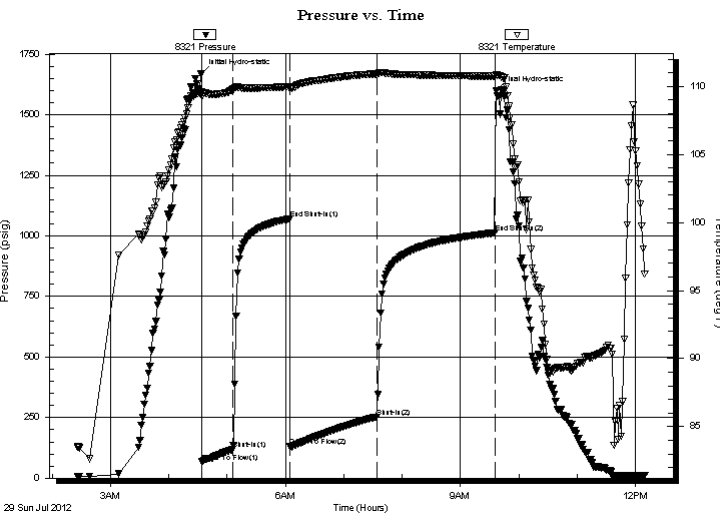
18-17s-13w
Hoffman 18-34
Job Ticket: 49338 **DST#: 3**
Test Start: 2012.07.29 @ 02:26:18

GENERAL INFORMATION:

Formation: **LKC-H-K**
Deviated: No Whipstock: ft (KB)
Time Tool Opened: 04:34:18
Time Test Ended: 12:09:18
Interval: **3308.00 ft (KB) To 2292.00 ft (KB) (TVD)**
Total Depth: 3392.00 ft (KB) (TVD)
Hole Diameter: 7.88 inches Hole Condition: Good
Test Type: Conventional Bottom Hole (Reset)
Tester: Jeff Brown
Unit No: 44
Reference Elevations: 1924.00 ft (KB)
1911.00 ft (CF)
KB to GR/CF: 13.00 ft

Serial #: 8321 Inside
Press @ Run Depth: 253.32 psig @ 3374.00 ft (KB) Capacity: 8000.00 psig
Start Date: 2012.07.29 End Date: 2012.07.29 Last Calib.: 2012.07.29
Start Time: 02:26:19 End Time: 12:09:18 Time On Btm: 2012.07.29 @ 04:33:48
Time Off Btm: 2012.07.29 @ 09:36:18

TEST COMMENT: IFP=Good blow BOB in 6 min
ISI=Fair blow back built to 7 in
FFP=Strong blow BOB in 4 min
FSI=Good blow back BOB in 13 min



PRESSURE SUMMARY

Time (Min.)	Pressure (psig)	Temp (deg F)	Annotation
0	1668.85	109.59	Initial Hydro-static
1	66.85	109.28	Open To Flow (1)
32	117.96	109.78	Shut-In(1)
91	1070.46	109.98	End Shut-In(1)
91	132.27	109.82	Open To Flow (2)
180	253.32	110.90	Shut-In(2)
302	1012.61	110.76	End Shut-In(2)
303	1598.09	110.86	Final Hydro-static

Recovery

Length (ft)	Description	Volume (bbl)
126.00	MW with oil spots 20%M 80%W	1.77
63.00	OCGWM 20%G 10%O 30%W 40%M	0.88
63.00	OCGM 35%G 15%O 50%M	0.88
254.00	Gassy Oil 40%O 60%G	3.56
0.00	1764-GIP	0.00

* Recovery from multiple tests

Gas Rates

Choke (inches)	Pressure (psig)	Gas Rate (Mcf/d)



**TRILOBITE
TESTING, INC**

DRILL STEM TEST REPORT

FLUID SUMMARY

Caerus Kansas LLC

18-17s-13w

Po Dox 1378
Hays Ks 67691 + 3974

Hoffman 18-34

Job Ticket: 49338

DST#: 3

ATTN: Brian Karlin

Test Start: 2012.07.29 @ 02:26:18

Mud and Cushion Information

Mud Type: Gel Chem

Cushion Type:

Oil API:

33 deg API

Mud Weight: 9.00 lb/gal

Cushion Length:

ft

Water Salinity:

ppm

Viscosity: 50.00 sec/qt

Cushion Volume:

bbbl

Water Loss: 9.18 in³

Gas Cushion Type:

Resistivity: ohm.m

Gas Cushion Pressure:

psig

Salinity: 4000.00 ppm

Filter Cake: inches

Recovery Information

Recovery Table

Length ft	Description	Volume bbbl
126.00	MW w ith oil spots 20%M 80%W	1.767
63.00	OCGWM 20%G 10%O 30%W 40%M	0.884
63.00	OCGM 35%G 15%O 50%M	0.884
254.00	Gassy Oil 40%O 60%G	3.563
0.00	1764-GIP	0.000

Total Length: 506.00 ft

Total Volume: 7.098 bbl

Num Fluid Samples: 0

Num Gas Bombs: 0

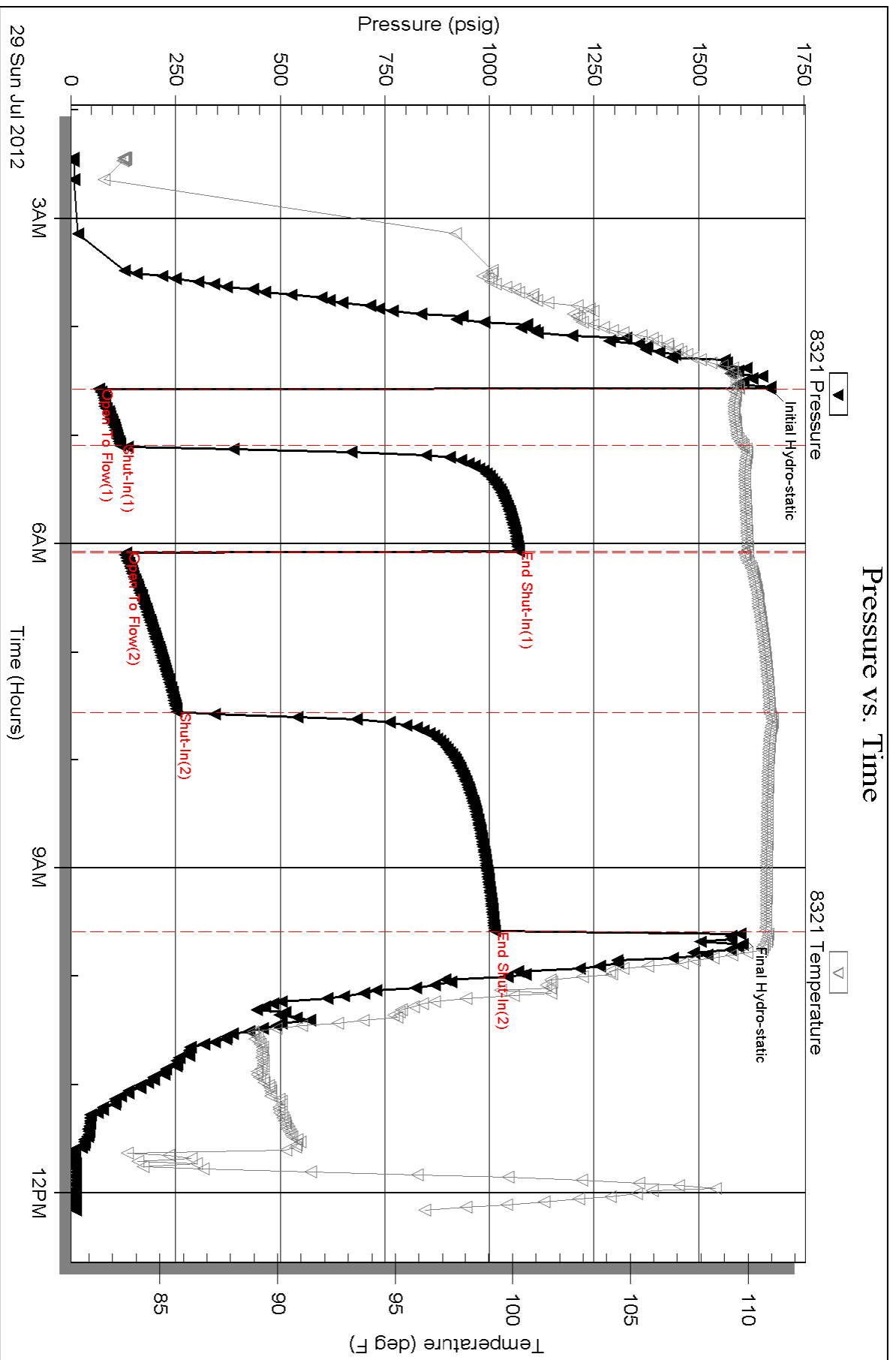
Serial #:

Laboratory Name:

Laboratory Location:

Recovery Comments:

Pressure vs. Time



Serial #: 8737

Outside Caerus Kansas LLC

Hoffman 18-34

DST Test Number: 3

