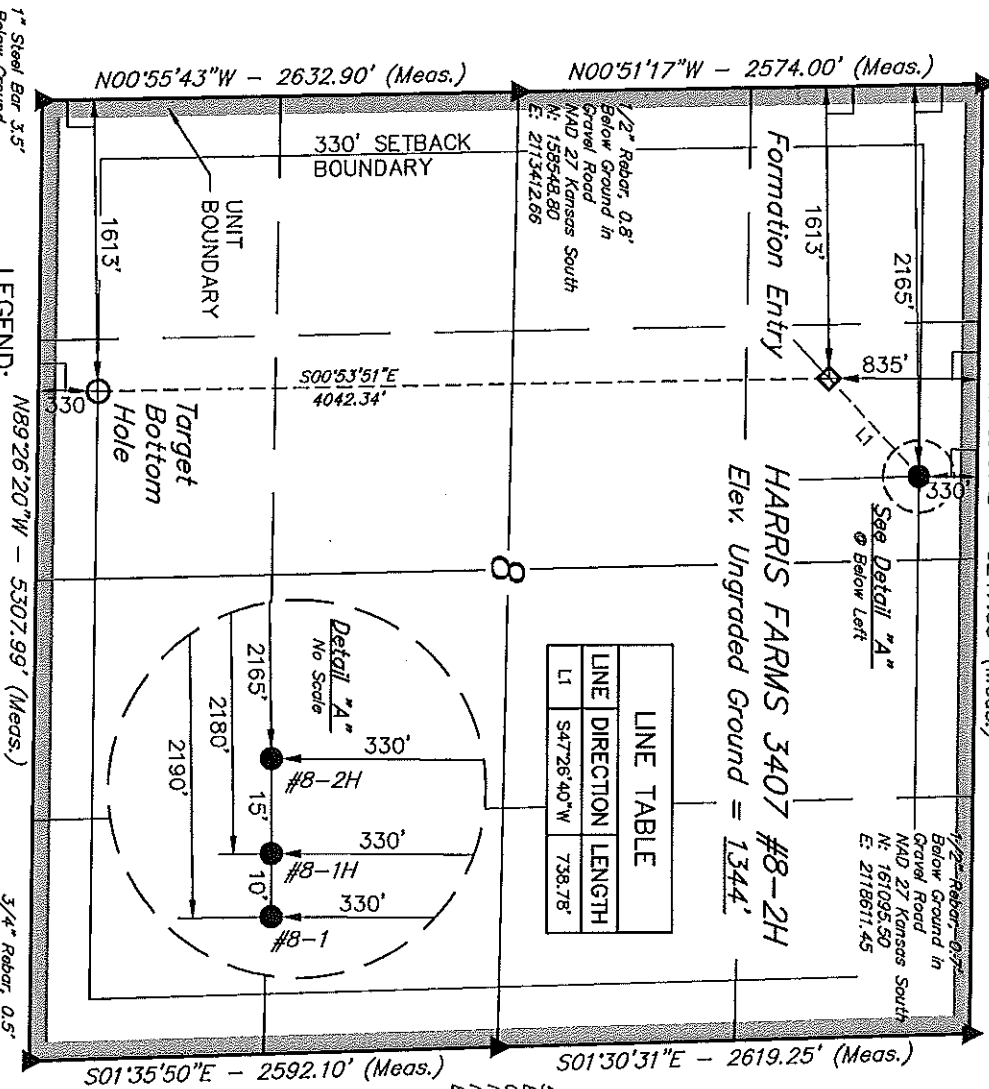


T34S, R7W, 6th P.M.

Pvt. Alum Cap.
LS 1369, 0.5'
Below Ground
in Gravel Road
NAD 27 Kansas South
N: 161122.42
E: 2113563.54

589°28'01"E - 5247.83' (Meas.)



1" Steel Bar 3.5'
Below Ground
NAD 27 Kansas South
N: 155916.35
E: 2113466.30

LEGEND:

○ = 90° SYMBOL

● = PROPOSED WELL HEAD.

▲ = SECTION CORNERS LOCATED.

LINE	DIRECTION	LENGTH	DATE SURVEYED	DATE DRAWN
NAD 83 (#8-2H TARGET BOTTOM HOLE)	NAD 83 (#8-2H FORMATION ENTRY)	NAD 83 (#8-2H SURFACE LOCATION)	04-05-12	04-10-12
LONGITUDE = 98706.20.99' (98.105831)	LONGITUDE = 98706.22.34' (98.106206)	LONGITUDE = 98706.27.28' (98.107576)		
LONGITUDE = 98706.20.99' (98.105831)	LONGITUDE = 98706.21.77' (98.106047)	LONGITUDE = 98706.15.05' (98.104181)		
NAD 27 (#8-2H TARGET BOTTOM HOLE)	NAD 27 (#8-2H FORMATION ENTRY)	NAD 27 (#8-2H SURFACE LOCATION)		
LONGITUDE = 3705.42.29' (37.095081)	LONGITUDE = 3706.22.25' (37.106181)	LONGITUDE = 3706.27.19' (37.107553)		
LONGITUDE = 3705.42.29' (37.095081)	LONGITUDE = 3706.22.25' (37.106181)	LONGITUDE = 3706.27.19' (37.107553)		
LONGITUDE = 98706.19.76' (98.105489)	LONGITUDE = 98706.20.54' (98.106706)	LONGITUDE = 98706.13.82' (98.103839)		
STATE PLANE NAD 27 (KANSAS SOUTH)	STATE PLANE NAD 27 (KANSAS SOUTH)	STATE PLANE NAD 27 (KANSAS SOUTH)		
N: 156257.24 E: 211507.315	N: 160279.02 E: 2114992.98	N: 160760.94 E: 211553.11		

SGOMI

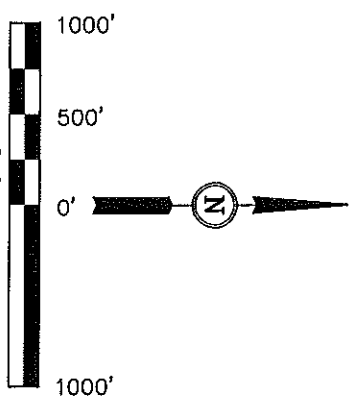
Well location, HARRIS FARMS 3407 #8-2H, located as shown in the NE 1/4 NW 1/4 of Section 8, T34S, R7W, 6th P.M., Harper County, Kansas.

BASIS OF ELEVATION

SPOT ELEVATION LOCATED AT THE NORTHEAST CORNER OF SECTION 22, T35S, R7W, 6th P.M. TAKEN FROM THE ANTHONY, QUADRANGLE, KANSAS, HARPER COUNTY, 7.5 MINUTE QUAD (TOPOGRAPHIC MAP) PUBLISHED BY THE UNITED STATES DEPARTMENT OF THE INTERIOR, GEOLOGICAL SURVEY. SAID ELEVATION IS MARKED AS BEING 1348 FEET.

BASIS OF BEARINGS

BASIS OF BEARINGS IS A G.P.S. OBSERVATION.



CERTIFICATE

THIS IS TO CERTIFY THAT THE ABOVE PLANS WERE PREPARED FROM FIELD NOTES OF ACTUAL SURVEYS MADE BY ME OR UNDER MY SUPERVISION AND THAT THE SAME ARE TRUE AND CORRECT TO THE BEST OF MY KNOWLEDGE AND BELIEF.

REGISTERED LAND SURVEYOR
JOHN W. BARNHART
REGISTRATION NO. 4966
STATE OF KANSAS
SUPERVISOR

REVISED: 07-30-12
REVISED: 04-24-12

UTPAH ENGINEERING & LAND SURVEYING
85 SOUTH 200 EAST - VERNAL, UTAH 84078
(435) 789-1017

SCALE	DATE SURVEYED:	DATE DRAWN:
1" = 1000'	04-05-12	04-10-12
PARTY	REFERENCES	FILE
L.S. J.P. C.C.	G.L.O. PLAT	SGOMI
WEATHER		
WARM		