

ADVANTAGE ELEVATIONS

OIL FIELD SURVEYORS

BOX 8604 - PRATT, KS 67124
(620) 672-6491

220123
INVOICE NO.

FALCON EXPLORATION INC OPERATOR 1-4 NO Iris Flats (NE) FARM

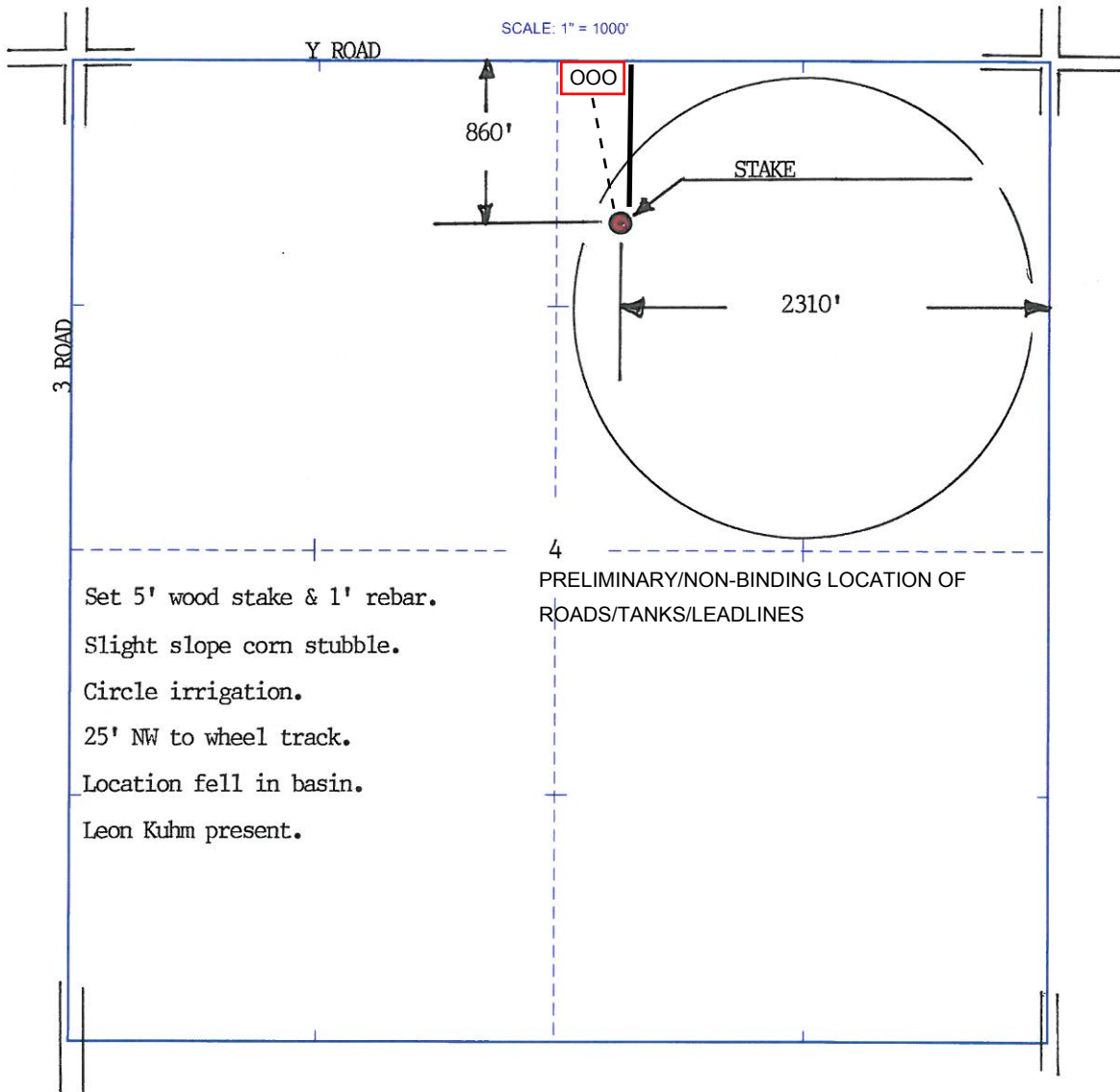
Gray COUNTY 4 S 28s T 30w R 860' FNL & 2310' FEL LOCATION

ELEVATION: 2793' GR



FALCON EXPLORATION INC
125 N Market St., Ste 1252
Wichita KS 67202

AUTHORIZED BY: Leon Kuhn



Set 5' wood stake & 1' rebar.
Slight slope corn stubble.
Circle irrigation.
25' NW to wheel track.
Location fell in basin.
Leon Kuhn present.

DATE STAKED: 02/20/12