

GEOLOGIC REPORT

DAVID J. GOLDAK

WICHITA, KANSAS
Scale 1:240 (5"=100') Imperial
Measured Depth Log

Well Name: LPR #1-21
Location: Section 21 - T15S - R33W
License Number: API: 15-109-21100
Spud Date: 07 / 09 / 2012
Surface Coordinates: 601' FNL and 589' FWL
Approx. C - NW - NW
Region: Logan Co., KS
Drilling Completed: 07 / 22 / 2012
Bottom Hole Coordinates:
Ground Elevation (ft): 2916' K.B. Elevation (ft): 2923'
Logged Interval (ft): 3400' To: 4630' Total Depth (ft): 4630'
Formation: Mississippian
Type of Drilling Fluid: Chemical - Mud Co

Printed by WellSight Log Viewer from WellSight Systems 1-800-447-1534 www.WellSight.com

OPERATOR

Company: Stelbar Oil Corporation
Address: 1625 N. Waterfront Pkwy, Suite 200
Wichita, Kansas 67206-6602

GEOLOGIST

Name: David J. Goldak
Company: D. J. GOLDAK, INC.
Address: 155 N. Market, Suite 710
Wichita, Kansas 67202

General Info

CONTRACTOR: Pickrell Drilling, Rig #10

BIT RECORD:

No.	Size	Make	Jets	Out	Feet	Hours
1	12-1/4	JZ-L116	3-14s	309	309	5.50
2	7-7/8	JZ-PL519-PDC	5-13s	3299	2990	47.75
3	7-7/8	Smith-FL28VPS	3-14s	4630	1331	58.00

SURVEYS: 309'-0.25, 1224'-0.25, 2130'-1.0, 3299'-0.75,
3948'-0.5, 4419'-0.5, 4630'-0.75

GENERAL DRILLING AND PUMP INFORMATION:

Drilling with 36,000-38,000 lbs. on bit and 70-75 RPM.
Running 8 stands of collars (6.5"x2.25"): 496.36'
Pumping 62 S/M, 7.56 B/M, and 1050 psi at standpipe.

Daily Status

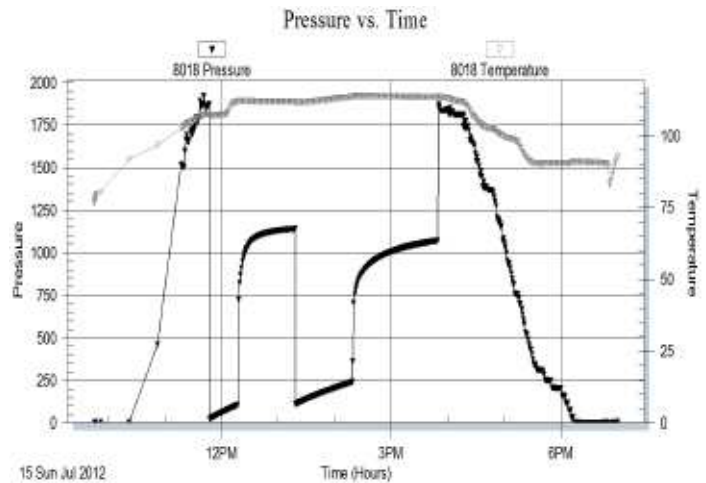
07/09/12 - MIRT & RU; Spud at 9:15 PM
07/10/12 - 309' Setting csg; Set 8-5/5" csg. @ 305'
07/11/12 - 1,068' Drilling
07/12/12 - 2,304' Drilling
07/13/12 - 3,173' Drilling
07/14/12 - 3,503' Displacing mud system
07/15/12 - 3,948' Prep for DST #1
07/16/12 - 4,038' Drilling; DST #2 and Repairs @ 4,100'
07/17/12 - 4,100' TIH & Repairs
07/18/12 - 4,140' TOOH with DST #3
07/19/12 - 4,266' TOOH for DST #4
07/20/12 - 4,350' Drilling; DST #5 @ 4,419'
07/21/12 - 4,444' Drilling; DST #6 @ 4,510'
07/22/12 - 4,538' CFS; RTD 4,630' @ 2:00 PM

DST #1: 3,911' - 3,948' (LKC B-C)
30" - 60" - 60" - 90"

IF: Fair blow, building to BOB in 18 minutes
ISI: No blow back
FF: Fair blow, building to BOB in 30 minutes
FSI: No blow back

RECOVERY: 486' Total Fluid, consisting of:
1' CO (100% O)
240' OSMW (50% W, 50% M)
245' MW (80% W, 20% M); Chlorides: 27,000 ppm
Sampler: 2000 ml Water @ 30 psi

SIP: 1140-1070; FP: 23-106, 108-242; HP: 1870-1851
BHT: 114

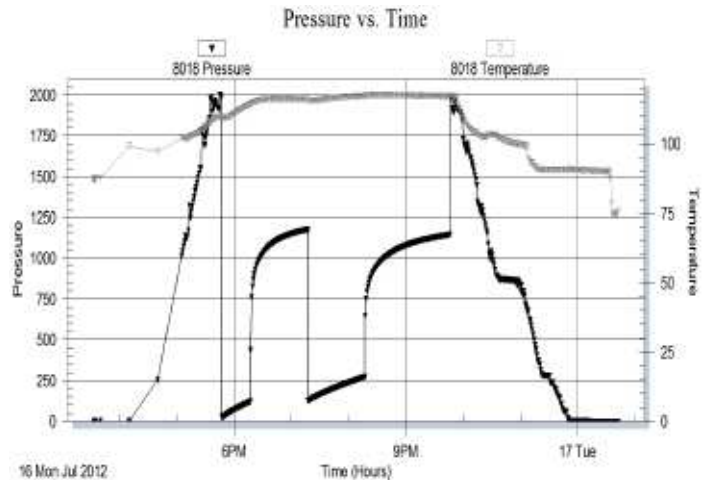


DST #2: 4,084' - 4,100' (LKC I)
30" - 60" - 60" - 90"

IF: Fair blow, building to BOB in 15 minutes
ISI: No blow back
FF: Fair blow, building to BOB in 20 minutes
FSI: No blow back

RECOVERY: 555' Total Fluid, consisting of:
70' OSMW (70% W, 30% M)
485' MW (90% W, 10% M); Chlorides: 45,000 ppm
Sampler: 2000 ml Water @ 0 psi

SIP: 1176-1144; FP: 25-120, 125-273; HP: 1995-1971
BHT: 117

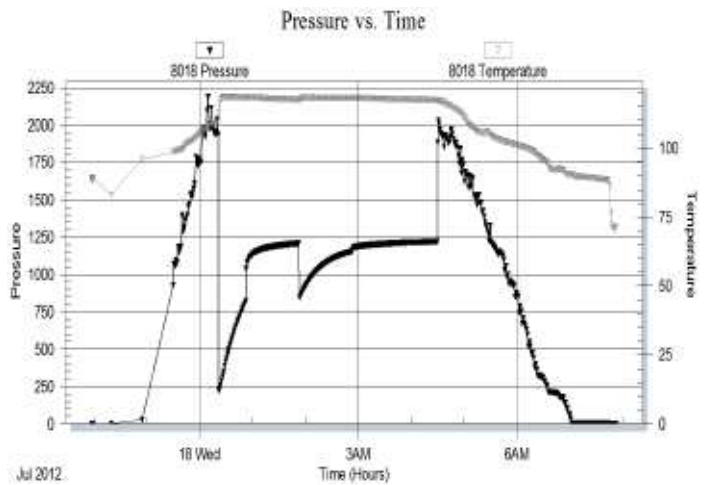


DST #3: 4,123' - 4,140' (LKC K)
30" - 60" - 60" - 90"

IF: Strong blow, building to BOB in 1 minute
ISI: No blow back
FF: Strong blow, building to BOB in 2 minutes
FSI: Weak blow back, died in 5 minutes

RECOVERY: 2,604' Total Fluid, consisting of:
186' MW (70% W, 30% M)
2,418' MW (90% W, 10% M); Chlorides: 44,000 ppm
Sampler: 2000 ml Water @ 200 psi

SIP: 1208-1218; FP: 225-819, 846-1156; HP: 2038-2029
BHT: 118

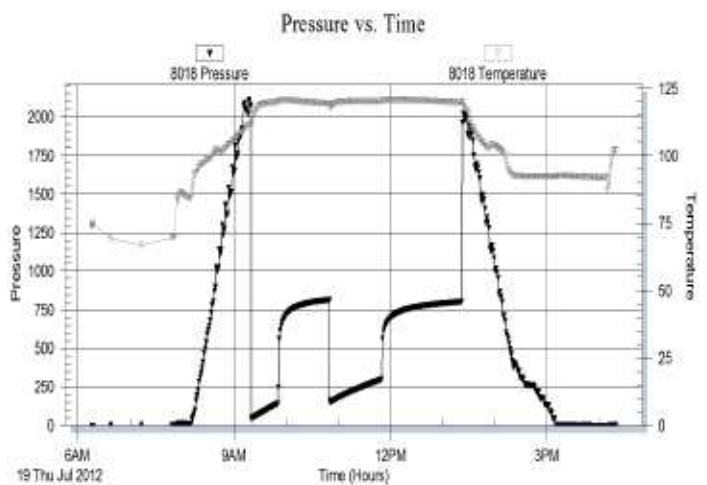


DST #4: 4,243' - 4,266' (Marmaton)
30" - 60" - 60" - 90"

IF: Strong blow, building to BOB in 6 minute
ISI: Strong blow back, building to BOB in 38 minute
FF: Strong blow, building to BOB in 11 minutes
FSI: Fair blow back, building to 8 inches

RECOVERY: 527' GIP & 775' Total Fluid, consisting of:
651' CGO (30% G, 70% O); Gravity: 32
124' GOCM (25% G, 30% O, 45% M)
Sampler: 750 ml Gas & 1250 ml Oil @ 220 psi

SIP: 815-803; FP: 39-142, 150-299; HP: 2102-2021
BHT: 120

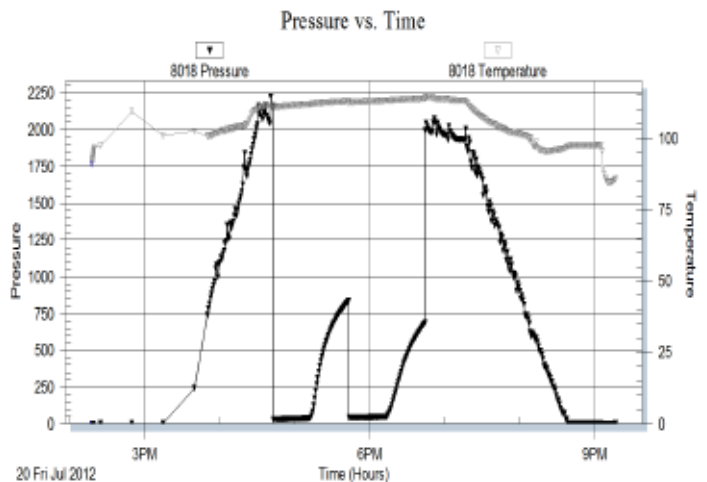


DST #5: 4,286' - 4,419' (Altamont-Cherokee)
30" - 30" - 30" - 30"

IF: Surface blow, died in 10 minutes
ISI: No blow back
FF: Weak surge, no blow
FSI: No blow back

RECOVERY: 50' Total Fluid, consisting of:
50' VSOCM (2% O, 98% M)
Sampler: 2000 ml Mud @ 0 psi

SIP: 836-692; FP: 28-37, 41-46; HP: 2145-2050
BHT: 114

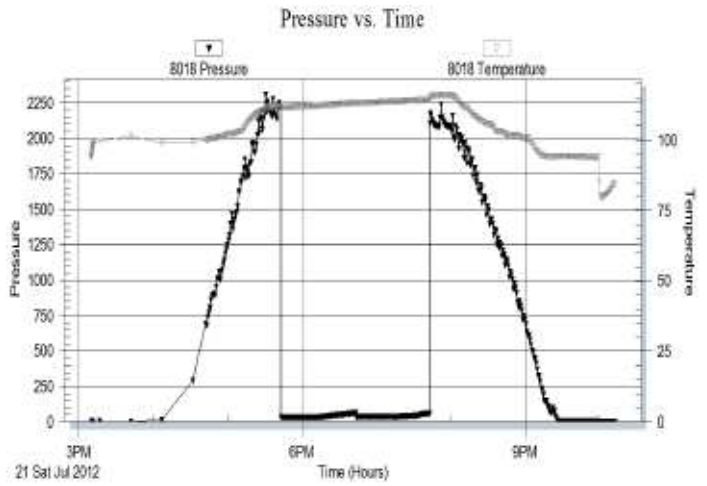


DST #6: 4,437' - 4,510' (Johnson Zone)
 30" - 30" - 30" - 30"

IF: Surface blow, died in 2 minutes
 ISI: No blow back
 FF: No blow
 FSI: No blow back

RECOVERY: 30' Total Fluid, consisting of:
 30' VSOCM (2% O, 98% M)
 Sampler: 2000 ml Mud @ 120 psi

SIP: 62-58; FP: 30-32, 34-35; HP: 2212-2173
 BHT: 115



ROCK TYPES

- Anhy
- Bent
- Brec
- Cht
- Clyst
- Coal
- Congl
- Dol

- Gyp
- Igne
- Lmst
- Meta
- Mrlst
- Salt
- Shale
- Shcol

- Shgy
- Sltst
- Ss
- Till
- Carb sh
- Dol
- Dtd
- Gry sh

- Sandylms
- Shale
- Sltstn
- Shlyslts
- Sltyslts
- Lms

ACCESSORIES

- #### MINERAL
- Anhy
 - Arggrn
 - Arg
 - Bent
 - Bit
 - Brecfrag
 - Calc
 - Carb
 - Chtdk
 - Chtlt
 - Dol
 - Feldspar
 - Ferrpel
 - Ferr
 - Glau
 - Gyp
 - Hvymin
 - Kaol
 - Marl
 - Minxl
 - Nodule
 - Phos
 - Pyr

- Salt
- Sandy
- Silt
- Sil
- Sulphur
- Tuff
- Chlorite
- Dol
- Sand
- Sltly

- #### FOSSIL
- Algae
 - Amph
 - Belm
 - Bioclst
 - Brach
 - Bryozoa
 - Cephal
 - Coral
 - Crin
 - Echin
 - Fish
 - Foram

- Fossil
- Gastro
- Oolite
- Ostra
- Pelec
- Pellet
- Pisolite
- Plant
- Strom
- Fuss
- Oomold

- #### STRINGER
- Anhy
 - Arg
 - Bent
 - Coal
 - Dol
 - Gyp
 - Ls
 - Mrst
 - Sltstrg
 - Ssstrg
 - Carbsh

- Clystn
- Dol
- Grysh
- Gryst
- Lms
- Sandylms
- Sh
- Sltstn

- #### TEXTURE
- Boundst
 - Chalky
 - Cryxln
 - Earthy
 - Finexln
 - Grainst
 - Lithogr
 - Microxln
 - Mudst
 - Packst
 - Wackest

OTHER SYMBOLS

POROSITY TYPE

- Earthy
- Fenest
- Fracture
- Inter
- Moldic
- Organic
- Pinpoint
- Vuggy

SORTING

- Well
- Moderate
- Poor

ROUNDING

- Rounded
- Subrnd
- Subang
- Angular

OIL SHOWS

- Even
- Spotted
- Ques
- Dead
- Gas show

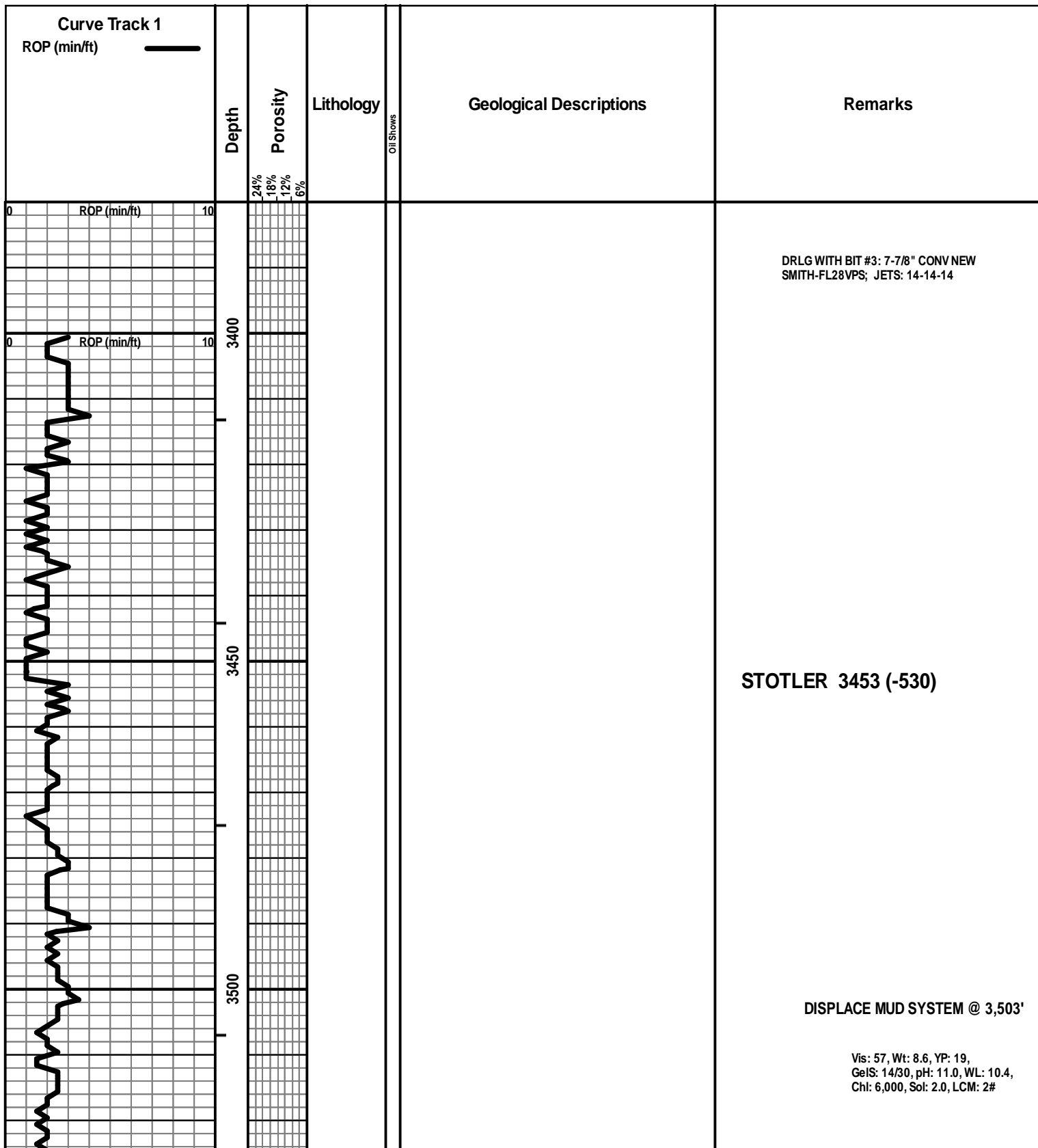
INTERVALS

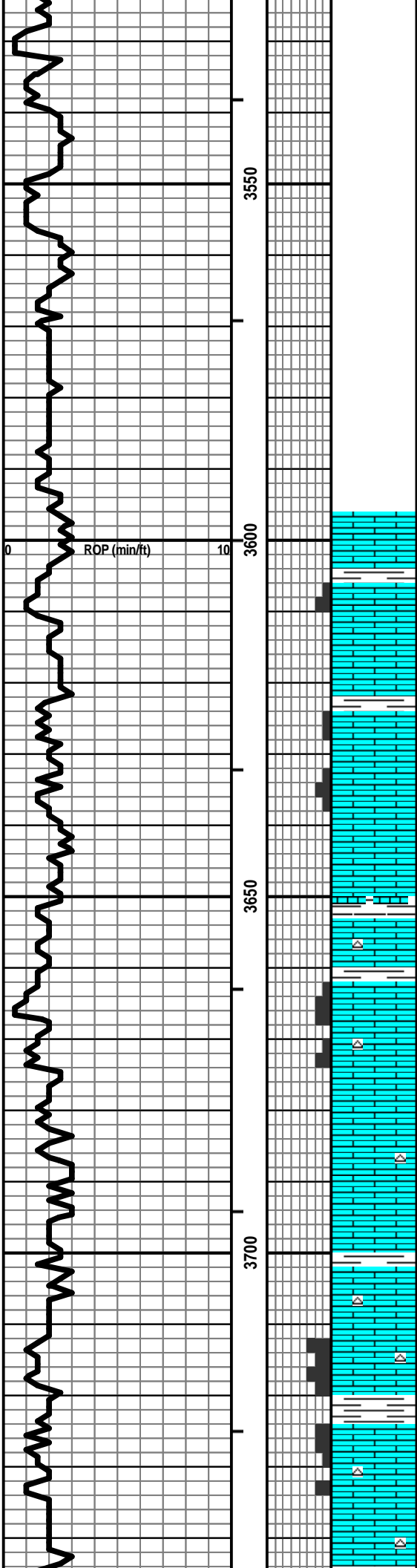
- Core
- Dst

- Dst_1_t
- Dst_1_b
- Dst

EVENTS

- Rft
- Sidewall
- Conn





LS - CRM / GY / SCAT TAN, F XLN, FOSS, OOL IN PT, P / SCAT F INTXLN POR IN PT, PRED DNS, NS

LS - CRM / TAN / WHT, VF / F XLN, FOSS IN PT, SCAT P / TR F INTXLN POR, TR CHKY, PRED DNS, NS

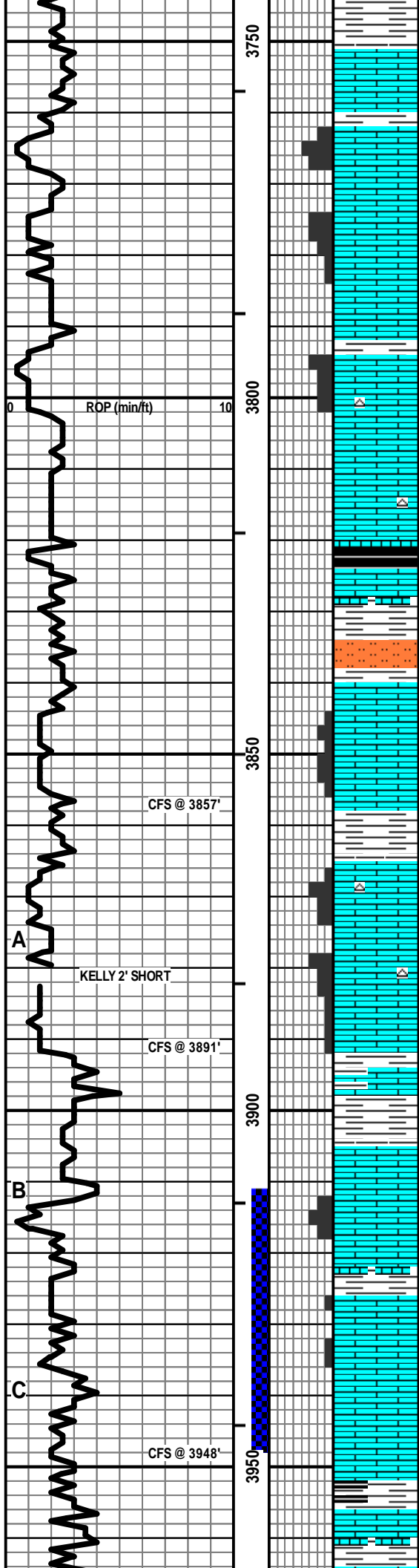
LS - CRM / TAN, VF / F XLN, FOSS, PRED DNS, NS W/ SCAT CHT - WHT / LT GY

LS - CRM / WHT / TAN, VF / F XLN, FOSS IN PT, P / F INTXLN POR IN PT, TR VUG POR, CHKY IN PT TO DNS, NS W/ SCAT CHT - WHT / LT GY

LS - CRM / TAN, F XLN, FOSS IN PT, SCAT F / G VUG + PPT POR, SCAT P INTXLN POR, PRED DNS, TR DEAD STN, NSFO W/ SCAT CHT - WHT / CRM

LS - CRM / WHT, F XLN, FOSS IN PT, SCAT OOL, F INTXLN + PPT POR IN PT TO DNS, NS W/ SCAT CHT - WHT / LT GY

Vis: 47, Wt: 8.7, LCM: 2#



THE 3770', 80', 90' & 3800' SAMPLES WERE NOT COLLECTED; THIS SAMPLE LAGS FROM 3750' TO 3793':
 LS - CRM / WHT / TAN, VF / F XLN, FOSS, OOL, F / G INTXLN / INTPART POR, F FOSSMOLD POR IN PT, CHKY / DNS IN PT, NS

LS - CRM / TAN, VF / F XLN, FOSS + OOL IN PT, F / SCAT G INTXLN + FOSSMOLD POR IN PT, DNS / CHKY IN PT, NS W/ SCAT CHT - WHT / LT GY

SH - BLK, CARB W/LS - TAN / BRN, VF / F XLN, SL FOSS, PRED DNS W/SH + SLTST - GY

LS - CRM / WHT / SCAT TAN, FOSS IN PT, P / TR F INTXLN POR IN PT, TR P VUG + PPT POR, TR FO, PRED NS, NO ODOR, TR SPTY / QUES STN

LS - CRM / TAN / WHT, F / SCAT M XLN, OOL + FOSS IN PT, F / SCAT G INTOOL / INTPART POR, NS, NO ODOR W/ SCAT CHT - WHT / CRM / LT GY

LS - ASABOVE, NS W/ SCAT CHT - AS ABOVE

LS - CRM / WHT, F XLN, FOSS IN PT, F / SCAT G INTXLN + VUG POR, FSFO, G ODOR, SAT / SPTY STN

LS - CRM / WHT / TAN, F / SCAT M XLN, FOSS + OOL IN PT, SCAT P INTXLN + PPT POR, TR FO + OILYFILM, NO ODOR, TR SPTY STN

LS - ASABOVE W/SH - GY / GRN / BLK W/LS - TAN / CRM, VF / F XLN, SL FOSS, PRED DNS, NS

HEEBNER 3821 (-898)

TORONTO 3840 (-917)

Vis: 42, Wt: 8.9, LCM: 2#

LANSING 3865 (-942)

DST #1: 3911'-3948' (LKC B-C)
 30" - 60" - 60" - 90"

IF: Fair blow, bldg to BOB in 18 min.
 ISI: No blow back
 FF: Fair blow, bldg to BOB in 30 min.
 FSI: No blow back

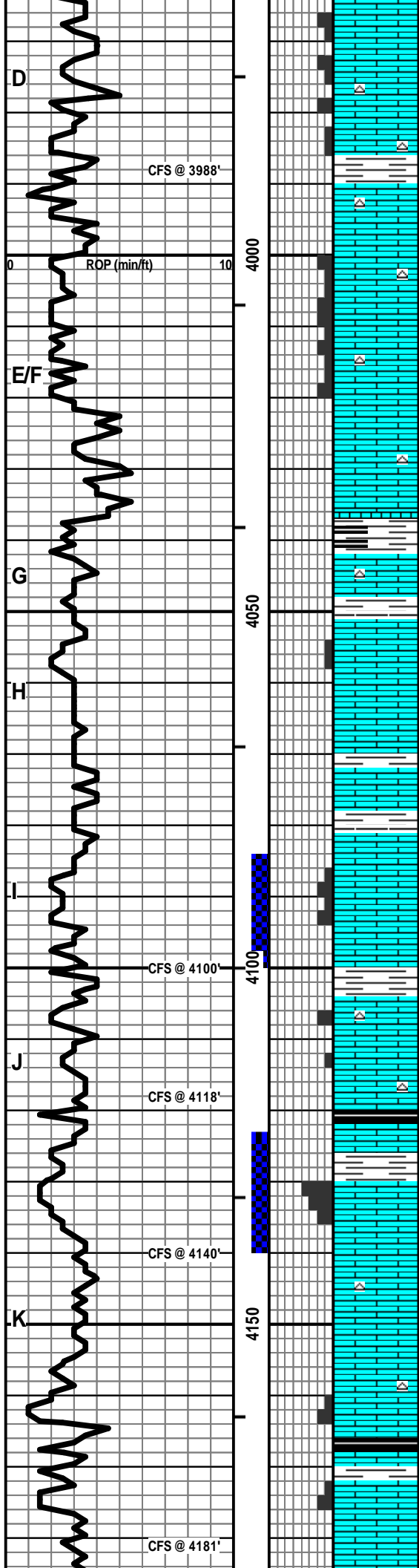
RECOVERY: 486' Total Fluid:
 1' CO (100% O)
 240' OSMW (50% W, 50% M)
 245' MW (80% W, 20% M)
 Chlorides Recovery: 27,000 ppm
 Sampler: 2000 ml Water @ 30 psi

SIP: 1140-1070 HP: 1870-1851
 FP: 23-106, 108-242 BHT: 114

Vis: 47, Wt: 9.1, YP: 16,
 GelS: 13/21, pH: 10.5, WL: 9.2,
 Chl: 4,500, Sol: 5.5, LCM: 2#

PIPE STRAP @ 3,948': LONG 0.67'

Vis: 53, Wt: 8.9, LCM: 2#



LS - CRM / TAN / LT GY, F / M XLN, FOSS, OOL, P / F INTXLN + PPT + VUG POR, SSFO, SCAT PSFO / BARR, FT ODOR, SPTY / SCAT SAT STN

LS - CRM / TAN / GY, MOT IN PT, VF / M XLN, FOSS, OOL, P / F INTXLN + PPT POR IN PT, CHKY IN PT, SCAT VSSFO, V FT ODOR, SCAT SPTY STN W / SCAT CHT - WHT / LT GY

LS - CRM / TAN, VF / F XLN, OOL IN PT, SL FOSS, P / SCAT F INTXLN + PPT POR, SCAT CHY / DNS, NS W / CHT - WHT / LT GY / TAN

LS - GY / CRM / TAN, VF / F XLN, OOL IN PT, P / F INTOOL POR IN PT, CHKY / DNS IN PT, NS W / CHT - LT GY / WHT

LS - GY / CRM / SCAT TAN, VF / F XLN, SCAT OOL, PRED DNS, NS W / SCAT CHT - WHT / LT GY W / SH - GY / BLK / GRN

LS - GY / CRM, F XLN, SCAT CRYPTO XLN, OOL IN PT, TR FOSS, SCAT P VUG + PPT POR, CHKY IN PT, PRED DNS, NS

LS - CRM / WHT, F / M XLN, OOL IN PT, SL FOSS, P / F INTXLN POR, TR VUG POR, S / F SFO, SCAT GB, F ODOR, SPTY / SAT STN

LS - CRM / GY, F XLN, OOL + FOSS IN PT, CHKY IN PT, SCAT P / F INTPART + MOLDIC POR, TR FO + ASPH, NO ODOR, TR SPTY STN, MOD BARR POR W / SCAT CHT - WHT / LT GY

LS - CRM / LT GY / SCAT TAN, MOT IN PT, F XLN, OOL, SL FOSS, P / G INTOOL / INTPART POR, SL / F SFO, SSG, FT ODOR, SPTY / SAT STN, SCAT BARR POR

LS - CRM / GY / SCAT TAN, VF / F XLN, OOL IN PT, SL FOSS, CHKY IN PT, PRED DNS, NS W / SCAT CHT - WHT / LT GY

LS - CRM / TAN / GY, F / M XLN, OOL IN PT, SL FOSS, P / F INTXLN + MOLDIC + VUG POR, CHKY IN PT, NS W / SCAT CHT - WHT / LT GY

LS - CRM / TAN / SCAT GY, F XLN, OOL IN PT, SL FOSS, P / SCAT F INTXLN + MOLDIC POR, CHKY IN PT, SCAT SSFO, MOD BARR POR, V FT ODOR, SCAT PRED SPTY STN

Vis: 52, Wt: 9.0, YP: 17,
GelS: 14/33, pH: 9.5, WL: 9.6,
Chl: 5,500, Sol: 4.9, LCM: 2#

MUNCIE CREEK 4037 (-1114)

DST #2: 4084'-4100' (LKC I)
30" - 60" - 60" - 90"

IF: Fair blow, bldg to BOB in 15 min.
ISI: No blow back
FF: Fair blow, bldg to BOB in 20 min.
FSI: No blow back

RECOVERY: 555' Total Fluid:
70' OSMW (70% W, 30% M)
485' MW (90% W, 10% M)
Chlorides Recovery: 45,000 ppm
Sampler: 2000 ml Water @ 0 psi

SIP: 1176-1144 HP: 1995-1971
FP: 25-120, 125-273 BHT: 117

Vis: 55, Wt: 9.1, YP: 19,
GelS: 15/39, pH: 10.0, WL: 10.4,
Chl: 7,000, Sol: 5.5, LCM: 2#

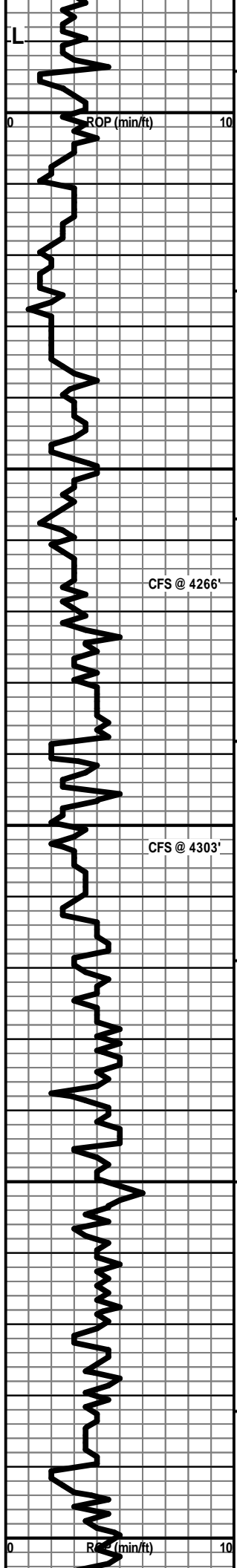
STARK SHALE 4120 (-1197)

DST #3: 4123'-4140' (LKC K)
30" - 60" - 60" - 90"

IF: Strong blow, bldg to BOB in 1 min.
ISI: No blow back
FF: Strong blow, bldg to BOB in 2 min.
FSI: Weak blow back, died in 5 min.

RECOVERY: 2,604' Total Fluid:
186' MW (70% W, 30% M)
2418' MW (90% W, 10% M)
Chlorides Recovery: 44,000 ppm
Sampler: 2000 ml Water @ 200 psi

SIP: 1208-1218 HP: 2038-2029
FP: 225-819, 846-1156 BHT: 118



LS - CRM / LT GY, F / CRYPTO XLN, SCAT REXLN CALC, SL FOSS, PRED DNS, NS W/ SCAT CHT - LT GY / WHT

Vis: 100, Wt: 9.1, LCM: 2#
JET & ADD PREMIX

BASE OF KC 4215 (1292)

LS - LT GY / CRM, F XLN, OOL, SCAT P / F INTOOL POR, TR VUG POR, SSFO, TR BARR POR, FT ODOR, SCAT SPTY / SAT STN

SH / SLTST / TR SS - GY / GRN / RED

LS - TAN / CRM, F / SCAT M XLN, FOSS IN PT, PRED DNS, NS

Vis: 40, Wt: 9.1, LCM: 2#
ADD PREMIX

LS - SIMILAR TO ABOVE, SCAT P PPT + VUG POR, SCAT SSFO, SCAT SPTY STN (CAVINGS?) W/ ABNT SH - RED / GY / GRN (POOR SAMPLE QUALITY)

MARMATON 4257 (-1334)

CFS @ 4266'

LS - CRM / TAN, F XLN, FOSS IN PT, TR PINTXLN + VUG POR, PRED DNS, SSFO, NO ODOR, TR SPTY STN W/ ABNT CAVINGS W/ ABNT SH - RED / GY / GRN (POOR SAMPLE QUALITY)

Vis: 40, Wt: 9.1, LCM: 2#
SPOT MUD ON BOTTOM FOR DST

LS - CRM / TAN / SCAT GY, MOT IN PT, VF / F XLN, SL FOSS, SCAT CHKY, PRED DNS, NS (FAIR SAMPLE QUALITY)

Vis: 46, Wt: 9.1, YP: 19,
GelS: 15/37, pH: 10.5, WL: 11.2,
Chl: 11,000, Sol: 5.5, LCM: 2#

ALTAMONT 4291 (-1368)

CFS @ 4303'

LS - CRM / LT GY, F / M XLN, OOLIN PT, SL FOSS, SCAT P / TR F INTXLN / INTOOL POR, SSFO, FT ODOR, SPTY / SAT STN

Vis: 52, Wt: 8.9, LCM: 2#

LS - CRM / TAN, VF / F XLN, SL FOSS, SCAT CHKY, PRED DNS, NS

DST #4: 4243'-4266' (Marmaton)
30" - 60" - 60" - 90"

IF: Strong blow, bldg to BOB in 6 min.
ISI: Strong blow back, BOB in 38 min.
FF: Strong blow, bldg to BOB in 11 min.
FSI: Fair blow back, bldg to 8 inches

LS - AS ABOVE, CHKY IN PT, PRED DNS, NS W/ SCAT CHT - LT GY W/ SH - GY / SCAT BLK

RECOVERY: 527' GIP & 775' Total Fluid:
651' CGO (30% G, 70% O); Gravity: 32
124' GOCM (25% G, 30% O, 45% M)
Sampler: 750 ml G & 1250 ml O @ 220 psi

LS - CRM / GY / SCAT TAN, VF / F XLN, SL FOSS, TR P INTXLN POR, CHKY IN PT, PRED DNS, TR FO, NO ODOR, TR SPTY STN

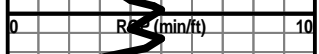
SIP: 815-803 HP: 2102-2021
FP: 39-142, 150-299 BHT: 120

LS - AS ABOVE, PRED DNS, NS W/ SH - BLK

Vis: 52, Wt: 9.0, YP: 17,
GelS: 13/30, pH: 10.5, WL: 10.0,
Chl: 10,000, Sol: 4.7, LCM: 2#

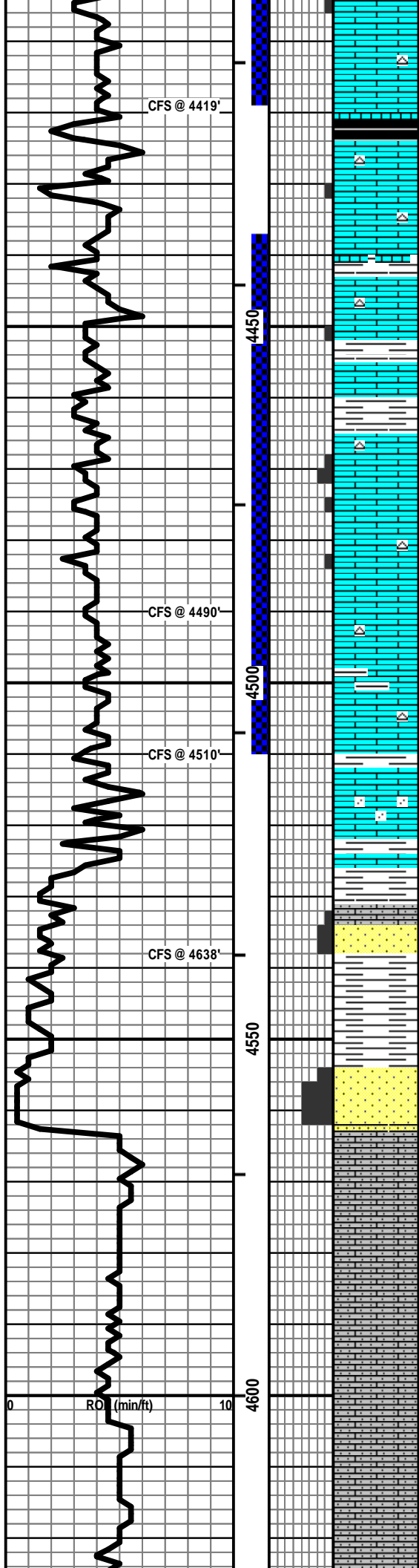
LS - CRM / LT GY / WHT, VF / F XLN, FOSS IN PT, CHKY IN PT, PRED DNS, NS

CHEROKEE SH 4390 (-1467)



LS - CRM / TAN / SCAT BRN, VF / F XLN, OOL + FOSS IN PT,

DST #5: 4286'-4419' (Altamont-Cher.)
30" - 30" - 30" - 30"



CFS @ 4419'

4450

CFS @ 4490'

4500

CFS @ 4510'

CFS @ 4638'

4550

4600

SCAT P INTOOL POR, TR VUG POR, PRED DNS, SSFO, FT ODOR, SCAT SPTY STN W/ SCAT CHT - LT GY/ WHT

LS - CRM / TAN / GY, MOT IN PT, VF / F / SCAT M XLN, OOL + FOSS IN PT, TR P INTXLN + PPT POR, PRED DNS, VSSFO, NO ODOR, TR SPTY STN W/ SCAT CHT - GY/ WHT

LS - GY / CRM, MOT IN PT, VF / F XLN, SL FOSS + OOL, TR P INTXLN + PPT POR, PRED DNS, VSSFO, FT ODOR, TR SPTY STN W/ SCAT CHT - GY/ WHT W/ SCAT SH - GY/ BLK

LS - CRM / TAN / SCAT GY, F / M XLN, FOSS + OOL IN PT, SCAT P / F VUG + INTXLN POR, SL / SCAT F SFO, F ODOR, SPTY / SAT STN W/ SCAT CHT - GY/ BRN

LS - CRM / TAN, F / M / TR C XLN, FOSS IN PT, CHTYN PT, SCAT P INTXLN + PPT POR, TR VUG POR, SSFO, SSGB, FT ODOR, SCAT SPTY / SAT STN W/ CHT - GY/ WHT / BRN

LS - CRM / TAN / BRN / SCAT GY, VF / F XLN, FOSS IN PT, CHKY IN PT, PRED DNS, NS, NO ODOR W/ SCAT CHT - GY / WHT / TAN / BRN

LS - CRM / TAN, VF / F XLN, MOD PYR IN PT, PRED DNS, NS W/ SCAT SS - LT GY / GRN, VF / F GR, SA / R, F / W SRTD, CALC CEM, P POR, NS

LS + SCAT SS - AA W/ SH - GY / GRN / SCAT RED

LS - CRM, VF / F XLN, AREN, VF QTZ GR, PRED DNS, NS W/ SS - CLR / WHT, VF / SCAT F GR, SA / R, W SRTD, CALC CEM, P / F INTGR POR, NS

SH - GY / GRN W/ SS - LT GY / CLR, VF / F GR, W SRTD, SR / R, CALC CEM, SCAT CHL, F / G INTGR POR, NS W/ SCAT SS - LT GY / CLR, F / C GR, P SRTD, SR / R, CALC CEM, G INTGR POR, SCAT VSSFO + ASPH, ABNT BARR POR, NO ODOR, SCAT SPTY STN

LS - CRM / WHT, VF XLN, AREN, VF / F QTZ GR, CHKY IN PT, PRED DNS, NS

LS - CRM / WHT, VF XLN, AREN, VF / F QTZ GR, OOL IN PT, CHKY IN PT, PRED DNS, NS

LS - WHT / CRM, VF XLN, AREN, VF / F QTZ GR, OOL, CHKY IN PT, PRED DNS, NS

LS - WHT / CRM, VF XLN, AREN, VF / F QTZ GR, OOL, CHKY IN PT, PRED DNS, NS

IF: Surface blow, died in 10 min.
 ISI: No blow back
 FF: Weak surge, no blow
 FSI: No blow back

RECOVERY: 50' Total Fluid:
 50' VSOCM (2% O, 98% M)
 Sampler: 2000 ml Mud @ 0 psi

SIP: 836-692 HP: 2145-2050
 FP: 28-37, 41-46 BHT: 114

Vis: 62, Wt: 9.0, YP: 21,
 GeIS: 17/43, pH: 10.0, WL: 10.0,
 Chl: 9,000, Sol: 4.8, LCM: 2#

JOHNSON ZONE 4465 (-1542)

Vis: 50, Wt: 8.9, LCM: 1.5#

DST #6: 4437'-4510' (Johnson Zone)
 30" - 30" - 30" - 30"

IF: Surface blow, died in 2 min.
 ISI: No blow back
 FF: No blow
 FSI: No blow back

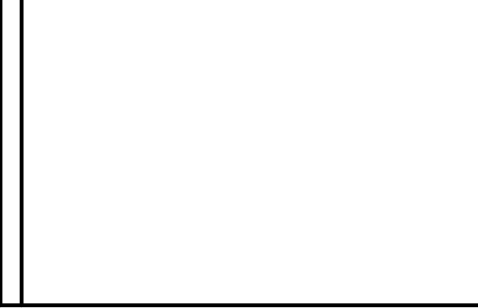
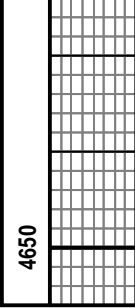
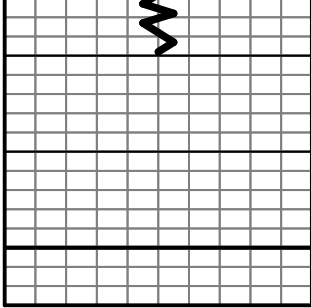
RECOVERY: 30' Total Fluid:
 30' VSOCM (2% O, 98% M)
 Sampler: 2000 ml Mud @ 120 psi

SIP: 62-58 HP: 2212-2173
 FP: 30-32, 34-35 BHT: 115

Vis: 65, Wt: 9.0, YP: 23,
 GeIS: 16/38, pH: 10.0, WL: 12.0,
 Chl: 8,000, Sol: 4.9, LCM: 2#

MISS. ST GEN 4563 (-1640)

Vis: 55, Wt: 9.0, LCM: 2#



TOTAL DEPTH 4630 (-1707)