



DRILL STEM TEST REPORT

Prepared For: **RJM Oil Co.**

Po Box 256 Claflin Kansas
67525

ATTN: Josh Austin

Vendetti #1

3-18s-13wBarton

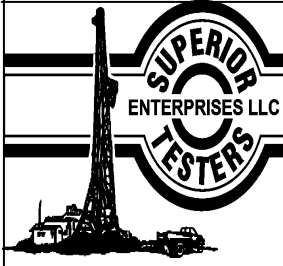
Start Date: 2012.07.24 @ 05:37:00

End Date: 2012.07.24 @ 11:57:00

Job Ticket #: 17313 DST #: 3

Superior Testers Enterprises LLC
PO Box 138 Great Bend KS 67530
1-800-792-6902

Printed: 2012.07.24 @ 22:17:32



DRILL STEM TEST REPORT

RJM Oil Co.
 Po Box 256 Claflin Kansas
 67525
 ATTN: Josh Austin

3-18s-13wBarton
Vendetti #1
 Job Ticket: 17313 **DST#: 3**
 Test Start: 2012.07.24 @ 05:37:00

GENERAL INFORMATION:

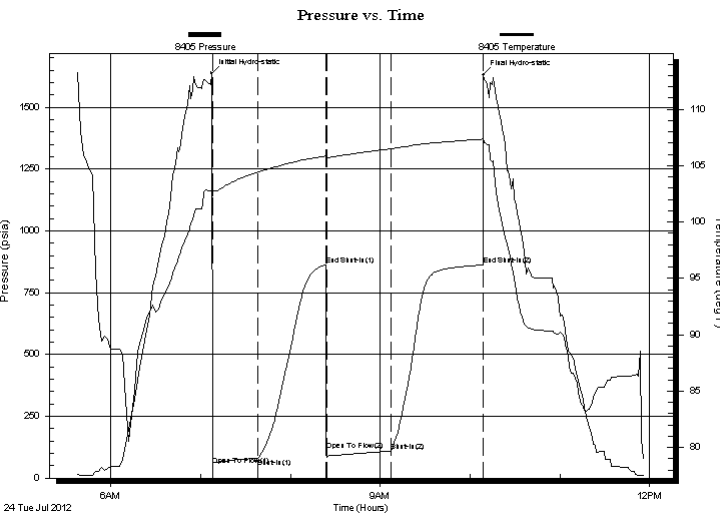
Formation: **Lansing J-K**
 Deviated: No Whipstock: ft (KB)
 Time Tool Opened: 07:08:00
 Time Test Ended: 11:57:00
 Interval: **3184.00 ft (KB) To 3239.00 ft (KB) (TVD)**
 Total Depth: 3239.00 ft (KB) (TVD)
 Hole Diameter: 7.88 inches Hole Condition: Fair
 Test Type: Conventional Bottom Hole (Initial)
 Tester: Dustin Ellis
 Unit No: 3315-Great Bend-20
 Reference Elevations: 1815.00 ft (KB)
 1808.00 ft (CF)
 KB to GR/CF: 7.00 ft

Serial #: 8405

Inside

Press @ Run Depth: 108.93 psia @ 3235.92 ft (KB) Capacity: 5000.00 psia
 Start Date: 2012.07.24 End Date: 2012.07.24 Last Calib.: 2012.07.24
 Start Time: 05:37:00 End Time: 11:57:00 Time On Btm: 2012.07.24 @ 07:07:30
 Time Off Btm: 2012.07.24 @ 10:09:00

TEST COMMENT: 1st Open 30 minutes Strong blow bottom bucket 2.5 minutes
 1st Shut in 45 minutes No blow back
 2nd Open 45 minutes Strong blow blew bottom bucket less than 1 min
 2nd Shut in 60 minutes No blow back



PRESSURE SUMMARY

Time (Min.)	Pressure (psia)	Temp (deg F)	Annotation
0	1638.33	102.85	Initial Hydro-static
1	52.58	102.36	Open To Flow (1)
31	81.06	104.42	Shut-In(1)
76	862.69	105.84	End Shut-In(1)
77	114.66	105.67	Open To Flow (2)
120	108.93	106.48	Shut-In(2)
181	862.48	107.35	End Shut-In(2)
182	1630.91	107.48	Final Hydro-static

Recovery

Length (ft)	Description	Volume (bbl)
137.00	Oil cut mud 50%Gas40%Oil 10%Mud	1.92
15.00	Clean oil 100%	0.21
0.00	Gravity of oil 46 corrected	0.00

Gas Rates

Choke (inches)	Pressure (psia)	Gas Rate (Mcf/d)



DRILL STEM TEST REPORT

TOOL DIAGRAM

RJM Oil Co.
 Po Box 256 Claflin Kansas
 67525
 ATTN: Josh Austin

3-18s-13wBarton
Vendetti #1
 Job Ticket: 17313 **DST#: 3**
 Test Start: 2012.07.24 @ 05:37:00

Tool Information

Drill Pipe:	Length: 3175.00 ft	Diameter: 3.80 inches	Volume: 44.54 bbl	Tool Weight:	2000.00 lb
Heavy Wt. Pipe:	Length: 0.00 ft	Diameter: 0.00 inches	Volume: 0.00 bbl	Weight set on Packer:	20000.00 lb
Drill Collar:	Length: 0.00 ft	Diameter: 0.00 inches	Volume: 0.00 bbl	Weight to Pull Loose:	55000.00 lb
			<u>Total Volume: 44.54 bbl</u>	Tool Chased	2.00 ft
Drill Pipe Above KB:	11.00 ft			String Weight: Initial	30000.00 lb
Depth to Top Packer:	3184.00 ft			Final	31000.00 lb
Depth to Bottom Packer:	ft				
Interval between Packers:	55.92 ft				
Tool Length:	75.92 ft				
Number of Packers:	2	Diameter: 6.75 inches			
Tool Comments:					

Tool Description	Length (ft)	Serial No.	Position	Depth (ft)	Accum. Lengths
Shut-In Tool	5.00			3169.00	
Hydraulic Tool	5.00			3174.00	
Packer	5.00			3179.00	20.00 Bottom Of Top Packer
Packer	5.00			3184.00	
Anchor	10.00			3194.00	
Change Over Sub	0.75			3194.75	
Drill Pipe	31.42			3226.17	
Change Over Sub	0.75			3226.92	
Anchor	8.00			3234.92	
Recorder	1.00	8405	Inside	3235.92	
Recorder	1.00	8400	Outside	3236.92	
Bull Plug	3.00			3239.92	55.92 Bottom Packers & Anchor

Total Tool Length: 75.92



DRILL STEM TEST REPORT

FLUID SUMMARY

RJM Oil Co.
Po Box 256 Claflin Kansas
67525
ATTN: Josh Austin

3-18s-13wBarton
Vendetti #1
Job Ticket: 17313 **DST#: 3**
Test Start: 2012.07.24 @ 05:37:00

Mud and Cushion Information

Mud Type: Gel Chem	Cushion Type:	Oil API:	deg API
Mud Weight: 9.00 lb/gal	Cushion Length: ft	Water Salinity:	ppm
Viscosity: 52.00 sec/qt	Cushion Volume: bbl		
Water Loss: 12.00 in ³	Gas Cushion Type:		
Resistivity: ohm.m	Gas Cushion Pressure: psia		
Salinity: 12000.00 ppm			
Filter Cake: 1.00 inches			

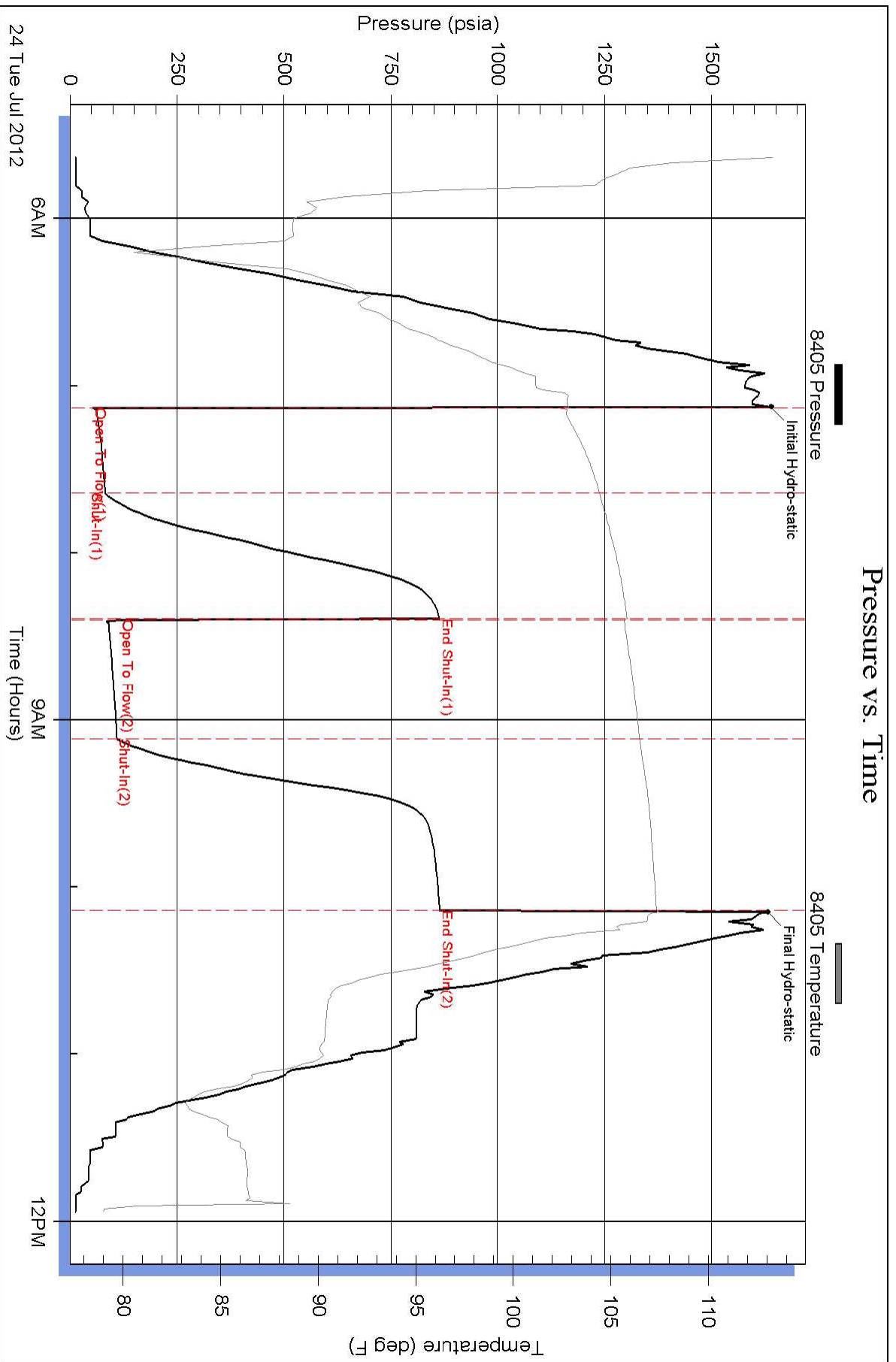
Recovery Information

Recovery Table

Length ft	Description	Volume bbl
137.00	Oil cut mud 50%Gas40%Oil 10%Mud	1.922
15.00	Clean oil 100%	0.210
0.00	Gravity of oil 46 corrected	0.000

Total Length: 152.00 ft Total Volume: 2.132 bbl
Num Fluid Samples: 0 Num Gas Bombs: 0 Serial #:
Laboratory Name: Laboratory Location:
Recovery Comments:

Pressure vs. Time



Pressure vs. Time

