

very succro; dul. H. to H. yel. fluoa.
No cut. abn. pr. fr. to gdt + trs excel
micro-ppt + interbed por.

Lms. tan; crypto. to v. v. fn. xln.; sub-chlk,
sub-succro + pachstn.; hvy. trs phantom
oolitic; dul. H. to H. yel. fluoa.; No Cut;

No Vis Por
4561-65 Sh. v. dk. gray calc + d. dk. gray to
blk - carb.

4565-4570 Sh. med to dk. gray, slt
to extaly calc

4570-75 Lms. trs. wht to cam. chlk
+ tan; crypto. to v. v. fn. xln.; trs wht to tan
fn to med calc slt + f. spn.; abn
phantom oolitic to hvy. trs. oolitic
for hvy. trs. phantom oolitic; sub-chlk
sub-succro to succro; dul. H. to H. yel. fluoa.
No cut; abn. pr. fr. to gdt + trs excel
+ micro-ppt + interbed por.

4575-90 Lms. tan, grayish. IP's crypto
to v. v. fn. xln.; trs. sub-chlk + tan
+ pachstn.; dul. H. to H. yel. fluoa.; No cut

No Vis Por
4590-4594 Sh. v. dk. gray to blk carb
4594-4615 Lms. similar 4575-4590

Sh. v. dk. gray to blk - carb

Lms. similar 4575-4590

4533-4724 Interbedded Lms + Shs

1. Lms. tan, grayish. IP's to tan greenish
IP's to tan H. green; crypto. to v. v. fn.
xln.; sub-chlk, sub-succro + pachstn.;
dul. H. to H. yel. fluoa.; No cut; No Vis Por

2. Sh. med to dk. gray, greenish IP's to
tan. H. green; slt to v. calc. IP's

4724-30 Sh. med to v. dk. gray to black
- carb

Lms. slt trs. wht to cam. chlk + tan, grayish IP's
crypto. to v. v. fn. xln.; sub-chlk, sub-succro
to slt trs. succro, pachstn. + slt trs.
sub-lithogr.; hvy. trs. phantom oolitic
to tan. oolitic; dul. H. to H. yel. fluoa.;
No cut; No Vis Por

4752-57 Sh. v. dk. gray to blk - carb

4757-68 Lms. similar 4730-4752

4768-4776 Sh. v. dk. gray to blk - carb

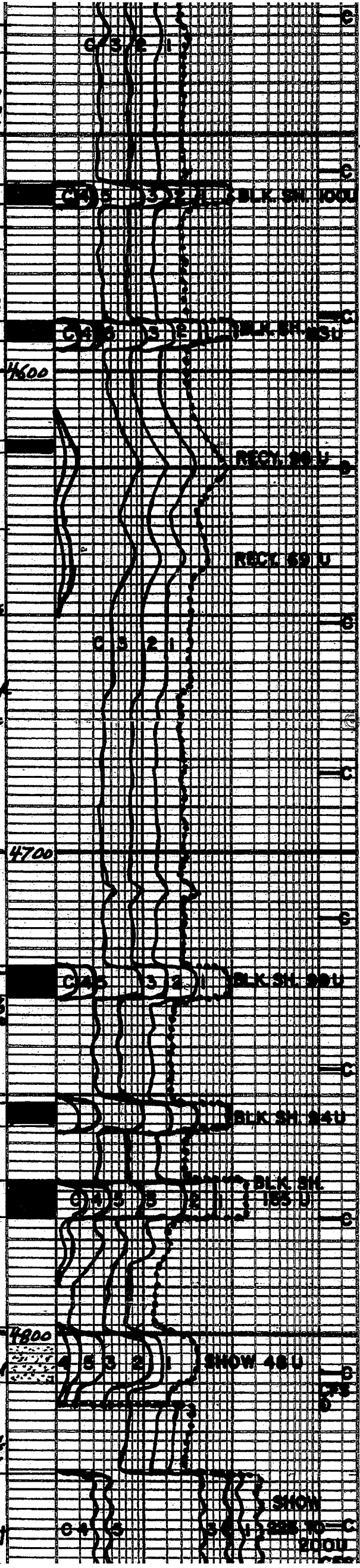
4776-91 Lms. similar 4730-4752
w/ interbedded Lms. H. to med
gray - slt; to extaly shly; crypto
v. v. fn. xln.; sub-chlk, sub-succro
+ pachstn.; No fluoa.; No cut
No Vis Por + Shs med to v. dk. gray
slt to extaly calc. IP's

4799-4810 Siltstn. H. gray - sh. filled IP's
to slt to tan calc; micro-pigeon IP's
w/ hvy. trs. slt v. v. fn. xln. to slt; H. gray
w/ slt to tan calc; oil stain; shly
oil oiled; slt-filled IP's to slt to v. calc;

slt trs. bleaching live oil; slt has dm
glau to tan glau. yel. fluoa. w/ f. spn. +
stagn. cats; slt trs. v. pr. micro-ppt
por + pach. interbed por. IP's
v. dk. st. Por. For most parts

4810-29 Sh. med to v. dk. gray, greenish IP's
to tan. H. green + tan; slt to extaly calc IP's
w/ interbedded Lms. tan to H. to med gray - shly
crypto. to v. v. fn. xln.; slt trs. w/ f. spn.
to blk spid. oil stain; w/ dk. glau
yel. fluoa. w/ f. spn. to tan. calc.
Cut; slt trs. v. poor micro-ppt IP's

4829-50 Interbedded Lms + Siltstn + Chert
Lms. tan w/ spid. dk. tan oil stain; crypto xln.



Cut. silt. tan v. poor micro fossils
 4829-50 Interbedded Lmsts, siltstns + chert
 Lmst tan w/ sp. dk. tan oil stn; crypto xlu-
 oolites w/ sub-succ. of encrusting material w/ sp.
 dk. tan oil stn, glau. yel. fluv. w/ sp. to
 excl. staining cuts; tan. fatogd. microsp.
 port. pass. lot. of ...
 i. siltstn. to v. eng. ...
 H. gray w/ sp. to even oil stn; dk.
 glau. to glau. yel. fluo.; fluv. to excl.
 staining cuts; silt. tan. pa. microsp. port.
 + pass. in tan. ...
 Quest. Perm. 3. tan. to v. 2b.
 chert & fresh w/ gray to tan,
 transl. to opaque & silt. to
 v. weathered w/ H. to dk. brn
 oil stn w/ dk. glau. to glau. yel.
 fluo. w/ fatogd. staining cuts
 hvy. tan. to dk. solution for
 chert increases w/ depth

4850-91 Chert w/ thin Limestn
 1. chert to 60% Fresh w/ht
 to lt. gray; opaque to tan transl.
 to 50% silt. tan. weathered
 w/ br. sp. to even H. to dk. brn
 oil stn; tan. bleeding like oil;
 dk. glau. to glau. yel. fluo. w/ flash to
 excl. staining cuts; 2b. pr. to
 hvy. tan. fatogd. + tan. excel.
 micro-sp. solution for.
 2. tan. Lmst. to brn.; crypto to
 v. tan. xlu. sub-succ. + patches;
 silt. tan. w/ tan. sp. to brn. oil stn.
 dk. glau. yel. fluo. w/ fatogd.
 staining cuts; No Vis for

4891-4919 Chert w/ inc. to
 hvy. to v. hvy. tan. Lmsts
 similar 4850-4891

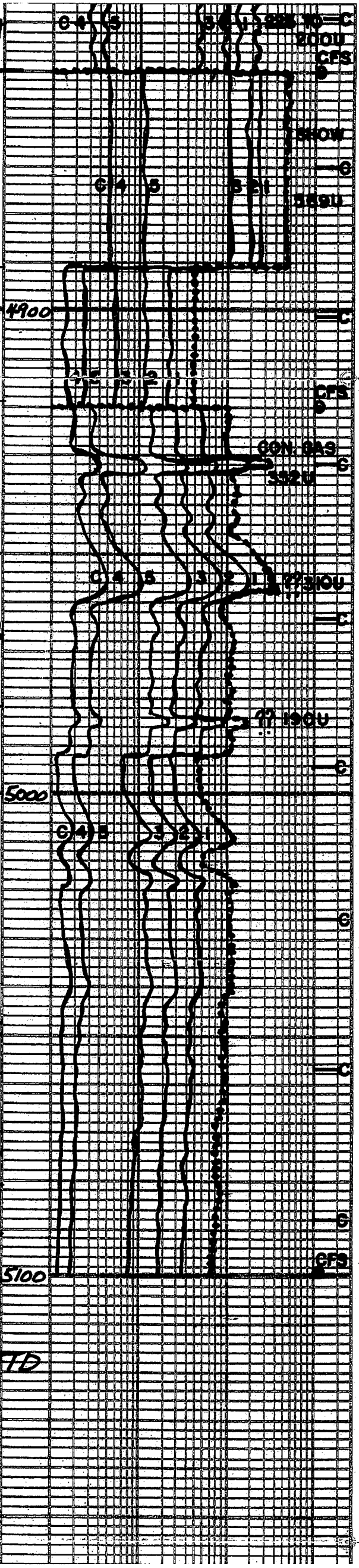
4919-5039 Sh med. gray, tan greenish
 to tan. H. green to green; tan brownish
 silt. to faly. calc. to br. silt. dol. w/
 silt. tan. siltstn. H. gray, silt. to faly. calc.
 and/or dolomitic; No fluo., No lut
 No Vis for

Lmst tan, grayish. IP's crypto. to v. fine
 sub-calc. sub-succ. + patches; dk. H.
 yel. to H. yel. fluo.; No lut, No Vis for
 w/ v. 2b. chert mostly fresh
 w/lt. gray + tan tan opaque to
 transl. to 5 to 10% silt. weathered
 tan w/ sp. dk. brown oil stn; yel. fluo.
 faint to fair ring cuts IP's, No Vis for

Sh med to dk. gray
 Lmst similar 5039-5081 w/ little
 or No chert

TD 5100
 7 7/8 inch Bit Into
 #1 New Smith F124 900ft 5100ft TD
 Cir. Points:
 1. 4815
 2. 4850
 3. 4920
 4. 5100

No DST's Were Run
 Daily Dalg Progress
 1. 45m at 2:10 PM 1-9-12



Sub-calc, sub-succo + p'chests; dul. H.
 yel to lt. yel. fluor.; No bit; No vis for
 w/v. z by. cheat mostly fresh,
 wbt to lt. gray + tes tan aqueto
 transl to 5 to 10% sli weathered
 tes w/ sptd. brown oil stain; yel. fluor;
 faint to fair ring cuts 1P's; No vis for

Sh med to dark gray

Logs similar to 5039-5081 w/ little
 or No Cheat

5100

TD 5100

7 7/8 inch Bit Info
 #1 New Smith F124 900ft 5100ft TD

Cir. Points:

1. 4815
2. 4850
3. 4920
4. 5100

No DST's Were Run

Daily Daily Progress

1. 4500 At 8:19 PM 6-9-12
2. 4710 At 7:00 AM 6-10-12
3. 5091 At 7:00 AM 6-11-12
4. 5100 At 7:00 AM 6-12-12

Mud Info:

Date	6-9 1000A	6-10 11:15A	6-11 11:15A	6-11 6:15P
Depth	4463	4708	5100	5100
Wt.	9.1	9.3	9.3	8.8
Vis	47	49	58	57
PV	13	13	18	17
YP	14	16	19	18
GS	1/44	1/38	1/48	1/38
WL	9.5	9.5	8.8	8.8
Cake	1/32	1/32	1/32	1/32
PH	10.5	10.5	9.5	9.5
Chl	4000	3000	3000	6000
Ca	80	80	80	80
LCM	0	4	4	7

OPERATOR BEREN CORPORATION LOCATION 2302ENL & 990FWL
 LEASE LOIS NO. 10 SEC. 9 TWP. 35S RANG. 12W
 ELEVATION 1432KB RTD 5100 COUNTY BARBER STATE KANSAS