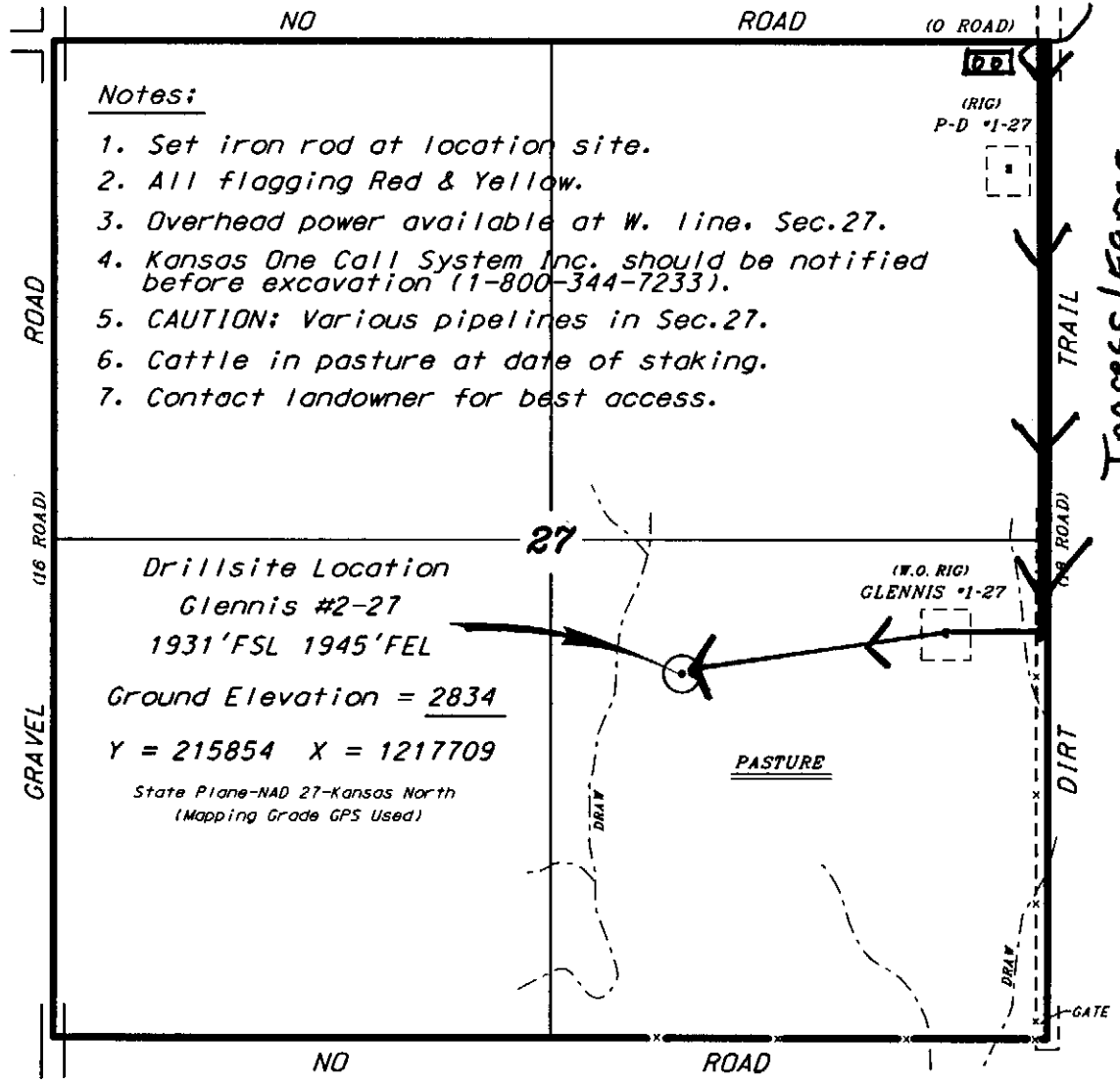


GRAND MESA OPERATING COMPANY
 GLENNIS LEASE
 SE. 1/4, SECTION 27, T13S, R31W
 GOVE COUNTY, KANSAS

Tank Battery

* Ingress and egress to location as shown on this plot is per usage only and may not be legally opened for public use. Contact landowner, tenant and county road department for access.



Notes:

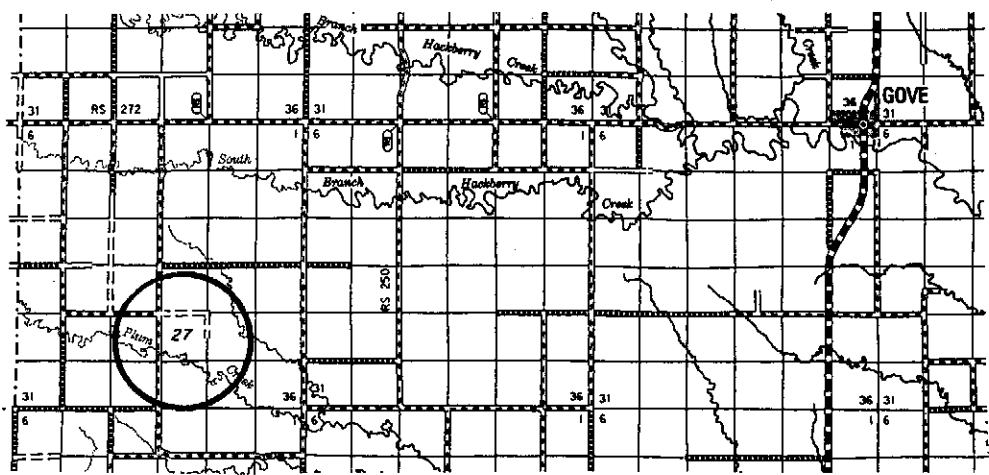
1. Set iron rod at location site.
2. All flagging Red & Yellow.
3. Overhead power available at W. line. Sec. 27.
4. Kansas One Call System Inc. should be notified before excavation (1-800-344-7233).
5. CAUTION: Various pipelines in Sec. 27.
6. Cattle in pasture at date of staking.
7. Contact landowner for best access.

Drillsite Location
 Glennis #2-27
 1931'FSL 1945'FEL
 Ground Elevation = 2834
 Y = 215854 X = 1217709
 State Plane-NAD 27-Kansas North
 (Mapping Grade GPS Used)

(W.O. RIG)
 GLENNIS #1-27

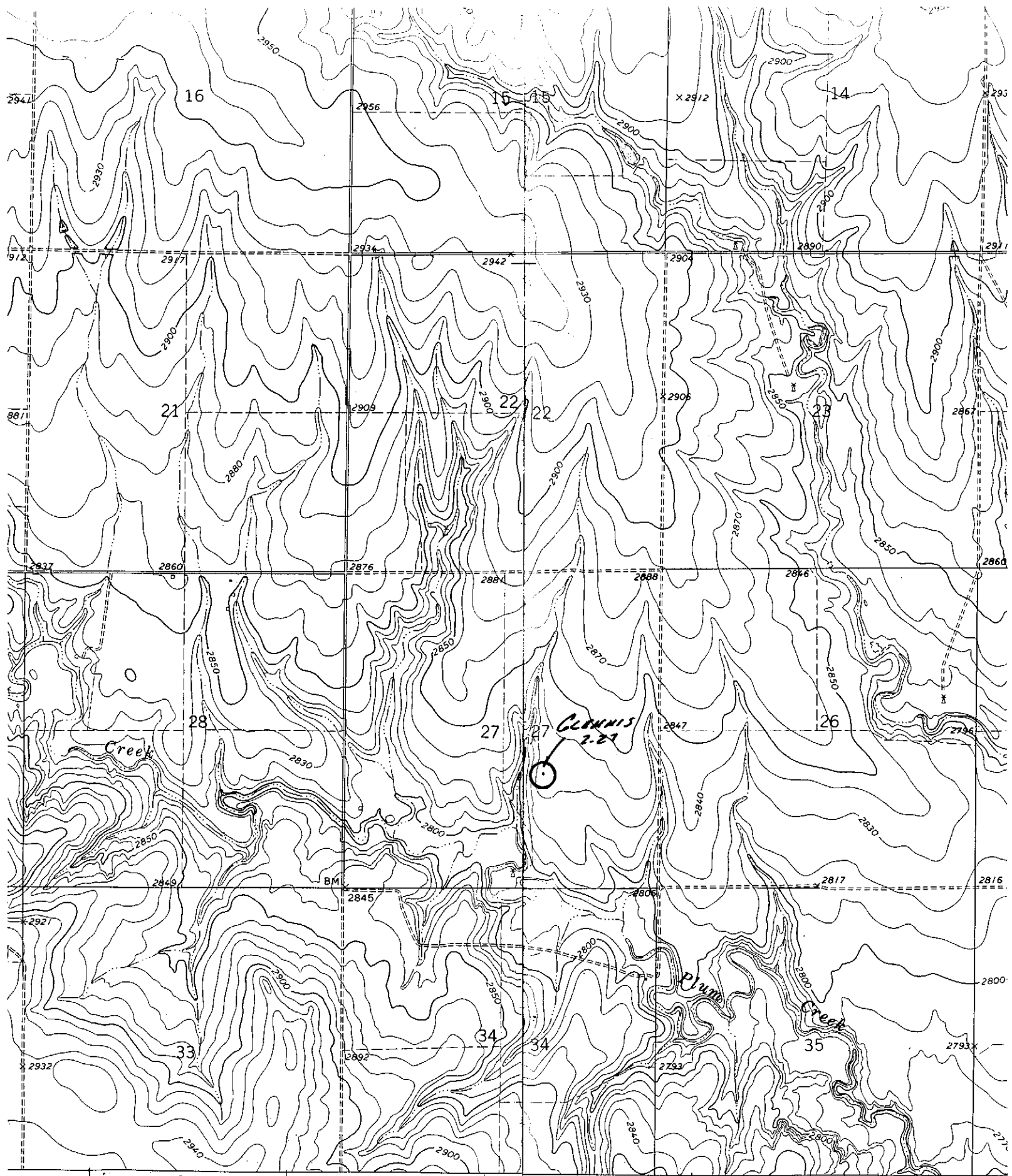
Ingress/Egress

SCALE 1" = 1000'



* Controlling data is based upon the best maps and photographs available to us and upon a regular section of land containing 640 acres.
 * Approximate section lines were determined using the normal standard of care of oilfield surveyors practicing in the state of Kansas. The section corners, which establish the precise section lines, were not necessarily located, and the exact location of the drillsite location in the section is not guaranteed. Therefore, the operator securing this service and accepting this plot and all other parties relying thereon agree to hold Central Kansas Oilfield Services, Inc., its officers and employees harmless from all losses, costs and expenses and solid entities released from any liability from incidental or consequential damages.
 * Elevations derived from National Geodetic Vertical Datum.

Date September 12, 2012



346 | INTERIOR—GEOLOGICAL SURVEY, WASHINGTON, D.C.—1974 | 348000m.E. | 100' 45' | 349 | 1 220 000 FEET | 350

ROAD CLASSIFICATION

- Primary highway, hard surface
- Secondary highway, hard surface
- Light-duty road, hard or improved surface
- Unimproved road

Mapped, edited, and published by the Geological Survey in cooperation with State of Kansas agencies
 Control by USGS and USC&GS
 Topography by photogrammetric methods from aerial photographs taken 1969. Field checked 1972