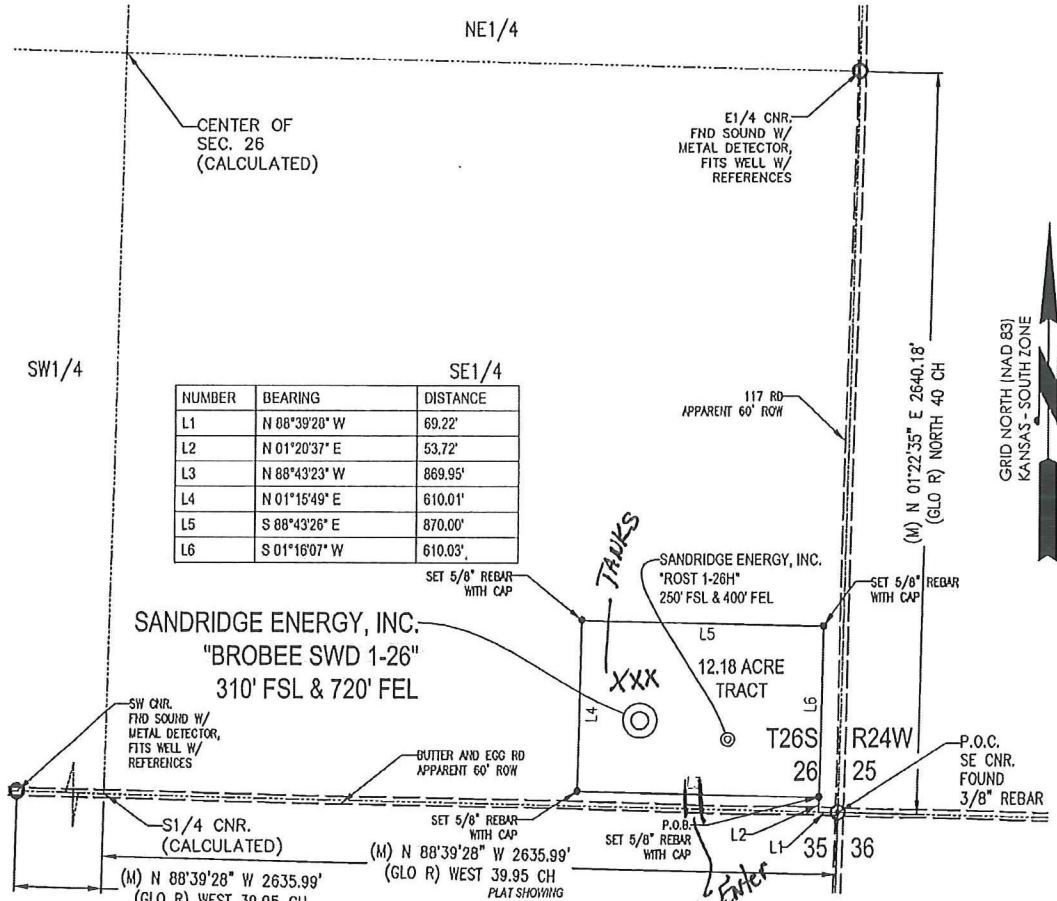


T 26 S - R 24 W



NUMBER	BEARING	DISTANCE
L1	N 08°39'20" W	69.22'
L2	N 01°20'37" E	53.72'
L3	N 88°43'23" W	869.95'
L4	N 01°15'49" E	610.01'
L5	S 88°43'26" E	870.00'
L6	S 01°16'07" W	610.03'

METES AND BOUNDS DESCRIPTION (12.18 ACRE TRACT)

PART OF THE SE1/4 OF SECTION 26, TOWNSHIP 26 SOUTH, RANGE 24 WEST, FORD COUNTY, KANSAS, MORE PARTICULARLY DESCRIBED AS FOLLOWS:

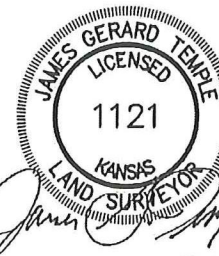
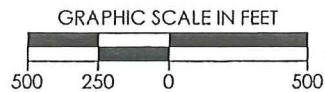
COMMENCING AT A FOUND 3/8" REBAR AT THE SE CORNER OF SAID SECTION 26;
 THENCE N 88°39'28" W ALONG THE SOUTH LINE OF SAID SECTION 26, A DISTANCE OF 69.22 FEET TO A POINT;
 THENCE N 01°20'37" E, A DISTANCE OF 53.72 FEET TO A SET 5/8" REBAR WITH CAP MARKED "LS1121," SAID POINT BEING THE POINT OF BEGINNING;
 THENCE N 88°43'23" W, A DISTANCE OF 869.95 FEET TO A SET 5/8" REBAR WITH CAP MARKED "LS1121," THENCE N 01°15'49" E, A DISTANCE OF 610.01 FEET TO A SET 5/8" REBAR WITH CAP MARKED "LS1121," THENCE S 88°43'26" E, A DISTANCE OF 870.00 FEET TO A SET 5/8" REBAR WITH CAP MARKED "LS1121," THENCE S 01°16'07" W, A DISTANCE OF 610.03 FEET TO THE POINT OF BEGINNING.

SAID TRACT CONTAINING 12.18 ACRES MORE OR LESS OF LAND AS SURVEYED.

BASIS OF BEARINGS:
 KANSAS COORDINATE SYSTEM 1983 SOUTH ZONE
BEARINGS: GRID
DISTANCES: US SURVEY FOOT AT GRID
COORDINATES: US SURVEY FOOT AT GRID

SURVEYOR'S CERTIFICATE:
 I, JAMES GERARD TEMPLE, KANSAS LICENSED PROFESSIONAL LAND SURVEYOR, NO. 1121, DO HEREBY CERTIFY THAT THIS PLAT REPRESENTS THE RESULTS OF A SURVEY MADE ON THE GROUND UNDER MY SUPERVISION ON THE DATE OF 04-23-2012.

(GLO R)- GENERAL LAND OFFICE RECORD
 (PERM R)- PERMANENT SURVEY RECORD
 (M)- MEASURED DATA



4/23/2012

REVISION		SandRidge	
△	REVISED CL LIMITS (04-19-2012)	"BROBEE SWD 1-26" PART OF THE SE1/4 OF SECTION 26, T-26-S, R-24-W PROPOSED DRILL SITE FORD COUNTY, KANSAS	
SCALE: 1" = 500'		PLOT DATE: 04-23-2012	DRAWN BY: S. ANDER
		SHEET NO.: 1 OF 1	