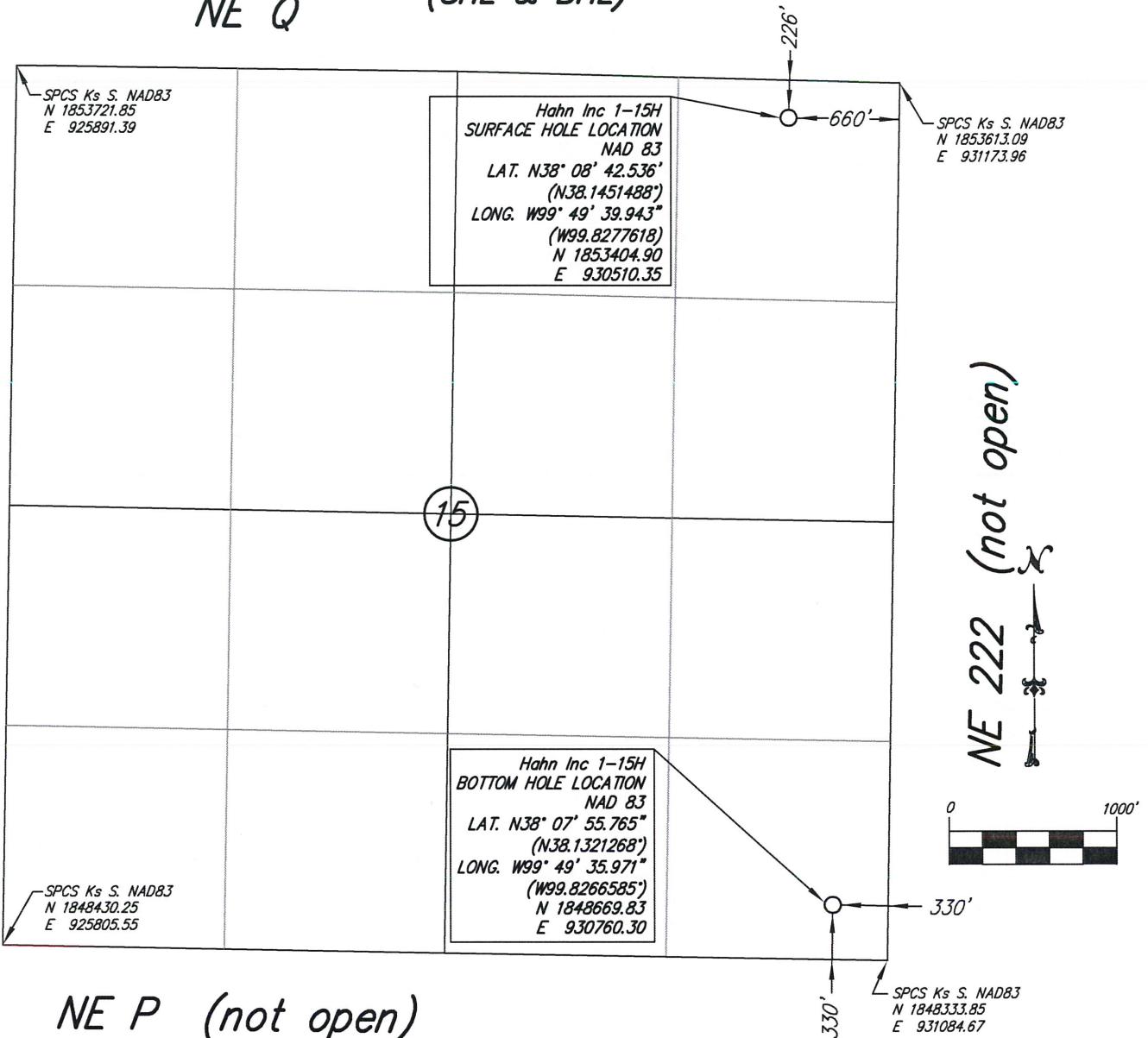


# WELL STAKE-OUT SURVEY (SHL & BHL)

NE Q

NE 221



NE P (not open)

Lease Name: Hahn Inc  
 Well No. 1-15H  
 Surface Hole Elevation at Stake: 2344.30 NAVD88  
 Well Location Co./State: Hodgeman County, Kansas  
 Well Location Section: 15-T22S-R23W

**Alternate Datums:**

	Horz. Datum NAD 27
Hahn Inc #1-15H Surface Hole	Lat. N38°08'42.472" Long. W99°49'38.488" N38.1451312" W99.827358"
Hahn Inc #1-15H Bottom Hole	Lat. N38°07'55.7007" Long. W99°49'34.5160" N38.1321391" W99.8262544"

**SURVEY DATUMS (shown on drawing)**  
 Horizontal Datum NAD83 (CORS96)  
 Vertical Datum NAVD88 (GEOID09)  
 Kansas SPCS South Zone (US Feet)

State of Kansas )  
 ) SS  
 Sedgwick County )

This is to certify that this map or plat and the survey on which it is based was made by me or under my direct supervision and that, to the best of my knowledge and belief, this is a true and correct exhibit of said survey. The wells shown hereon were staked August 24, 2012 at the coordinate location noted.



Brian N. Savoy, RLS #817  
 This survey is valid only if print bears Surveyor's seal, signed in blue ink.



**Savoy Company, P.A.**  
 Land Surveyors

433 S. Hydraulic, Suite 104, Wichita, KS 67202

PH (316) 265-0005

FAX (316) 265-0275

www.savoyco.com



**POE & ASSOCIATES, INC.**  
 CONSULTING ENGINEERS  
 5940 E. Central, Suite 200 Wichita, KS 67208-4242  
 Phone 316/685-4114 FAX 316/685-4444