

50

3700

50

3800

50

3900

Heebaer
3856 (C-1277)

Lansing
3897 (C-1314)

ls, con - tan, fa x ln, dense hard, p. v. s.
p. mott. ls, tan, calc. no. ad. v. s.

ls, con - lt. gray, fa x ln, dense, 1/8" fl. k.
p. mott. ls, tan, calc. no. ad. v. s.

Sh. var. color

ls, con - gray, fa x ln, dense, hard
p. mott. ls, tan, calc. no. ad. v. s.

ls, klt

Sh. var. color

Sh., blk. carb.

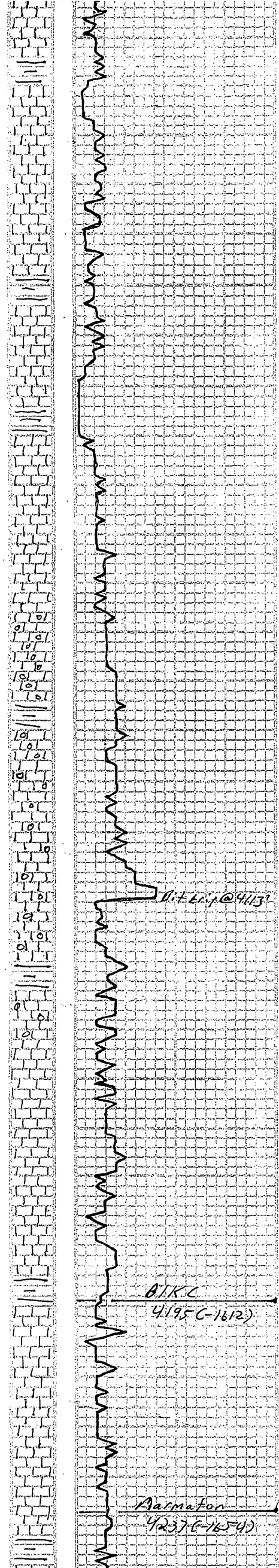
ls, con - of t. w. fa x ln, do. p. v. s. / hard
p. mott. ls, tan, calc. no. ad. v. s.

ls, con - tan, fa x ln, dense, fl. k. top
p. mott. ls, tan, calc. no. ad. v. s.

ls, klt

Sh. gray blk

ls, con - gray, fa x ln, dense, hard, p.
v. s. mott. ls, tan, calc. no. ad. v. s.



50

ls, com - gray, fine, dense, hard, m. vis.
p. most, ip, no. od, nls

ls, AB

ls, com - gray, fine, dense, p. m.
vis. of sh, chky, to p. l. nls

ls, com - wh, fine, dense, hard, m. vis.
p. most, ip, no. od, nls

sh, var. color

4000

ls, com - gray, fine, dense, brittle, m. vis.
p. vis. of, few, ungs, no. od, nls

ls, AB

sh, var. color

ls, l. gray, fine, dense, hard, m. vis.
p. vis. of, no. od, nls

ls, com - gray, fine, dense, hard, m. vis.
p. vis. of, no. od, nls

50

ls, com - gray, fine, dense, hard, m. vis.
p. vis. of, no. od, nls

ls, com - gray, fine, dense, brittle, m. vis.
p. vis. of, no. od, nls

sh, gray - blk

ls, AB

4100

ls, com - gray, fine, dense, hard, m. vis.
p. vis. of, no. od, nls

ls, com - gray, fine, dense, brittle, m. vis.
p. vis. of, no. od, nls

ls, com - gray, fine, dense, hard, m. vis.
p. vis. of, no. od, nls

sh, gray - blk

ls, AB - few pieces of fish with open
fossils

50

ls, wh - gray, fine, dense, hard, m. vis.
p. most, ip, sh, chky, no. od, nls

ls, com - wh, fine, dense, hard, m. vis.
p. vis. of, few, ungs, no. od, nls

ls, AB

sh, blk - var. color

ls, com - wh, fine, dense, brittle, m. vis.
p. vis. of, no. od, nls

ls, com - wh, fine, dense, hard, m. vis.
p. vis. of, no. od, nls

sh, var. color

4200

B.K.C.
4195 (C-1612)

ls, com - gray, fine, dense, hard, m. vis.
p. vis. of, no. od, nls

ls, AB

ls, com - gray, fine, dense, brittle, m. vis.
p. vis. of, sh, chky, no. od, nls

Aarmaton
4237 (C-1654)

ls, com - gray, fine, dense, hard, m. vis.
p. vis. of, no. od, nls

sh, var. color

M. v. @ 9100'
WB-9.1
US-4.9
wt-16.8
GAC-4200
KCM-1

50

Sh, var. color
ls, com - tan to gray, brittle, p. vis. of, mostly thin bedded, no ppt, nls
ls, bl. gray, fine to med. dense hard, p. vis. of, some thin, no oil, no ppt, nls
ls, blk

4300

ls, com - tan, fine to med. dense, brittle, p. vis. of, mostly thin bedded, no ppt, nls
ls, com - tan, fine to med. dense, brittle, p. vis. of, mostly thin bedded, no ppt, nls
ls, blk

Pawnee

4328 (C-1195)

ls, gray - bl. tan, fine to med. dense hard, p. vis. of, nls

50

ls, gray - bl. tan, fine to med. dense, brittle, p. vis. of, mostly thin bedded, no ppt, nls
ls, blk - gray, fine to med. dense, brittle, p. vis. of, mostly thin bedded, no ppt, nls
ls, blk

Ft. Scott

4390 (C-1807)

ls, com - tan, fine to med. dense, brittle, p. vis. of, mostly thin bedded, no ppt, nls
Sh, var. color

4400

ls, com - tan, fine to med. dense, brittle, p. vis. of, mostly thin bedded, no ppt, nls
ls, blk - gray, fine to med. dense, brittle, p. vis. of, mostly thin bedded, no ppt, nls
Sh, var. color

Cherokee Sh

4419 (C-1876)

ls, com - tan, fine to med. dense, brittle, p. vis. of, mostly thin bedded, no ppt, nls
ls, blk - gray, fine to med. dense, brittle, p. vis. of, mostly thin bedded, no ppt, nls
Sh, var. color

Mud V @ 4430
wt. 93
vis. 39
WL-142
chl-5,600
lcm-1

50

ls, com - tan, fine to med. dense, brittle, p. vis. of, mostly thin bedded, no ppt, nls
ls, blk - gray, fine to med. dense, brittle, p. vis. of, mostly thin bedded, no ppt, nls
Sh, var. color

Mississippian

4480 (C-1897)

ls, blk - gray, fine to med. dense, brittle, p. vis. of, mostly thin bedded, no ppt, nls
ls, blk - gray, fine to med. dense, brittle, p. vis. of, mostly thin bedded, no ppt, nls
Sh, blk

Mississippian (oil)

4502 (C-1919)

ls, com - tan, fine to med. dense, brittle, p. vis. of, mostly thin bedded, no ppt, nls
ls, blk - gray, fine to med. dense, brittle, p. vis. of, mostly thin bedded, no ppt, nls
Sh, blk

DST #1 4435 - 4513
15-30-60-90
Rec. 1260' C.O.
60' MCO (207m 207m)
IHP-2269# FHP-2102#
IFP-108# FFP-298#
TSTP-1194# FSTP-1204#

50

ls, com - tan, fine to med. dense, brittle, p. vis. of, mostly thin bedded, no ppt, nls
ls, blk - gray, fine to med. dense, brittle, p. vis. of, mostly thin bedded, no ppt, nls
Sh, blk

Mud V @ 4573
wt. 9.1
vis. 60
WL-184
chl-5,800

Mississippian loc 4502 G-1919

4500

Dol. fine gr. dense, hard, suggy
p. fine gr. yellow. Blue. T. g. 2. 8

Dol. fine gr. dense, hard, blue
very good suggy p. 1. 500
succlitic, v. g. 600, good blue, blue

Dol. fine gr. dense, hard, blue
p. fine gr. yellow. Blue. T. g. 2. 8

Dol. fine gr. dense, hard, blue
p. fine gr. yellow. Blue. T. g. 2. 8

Dol. fine gr. dense, hard, blue
p. fine gr. yellow. Blue. T. g. 2. 8

Dol. fine gr. dense, hard, blue
p. fine gr. yellow. Blue. T. g. 2. 8

Dol. fine gr. dense, hard, blue
p. fine gr. yellow. Blue. T. g. 2. 8

DST #1 4435-4513'
15-30-60-90
Rec. 1260' CO
60' MCO (200m 207m)
IHP-2269# FHP-2102#
FFP-108# FFP-298#
FSTP-1199# FSTP-1204#

Mud v @ 4573
SE-9.1
Vis-60
CL-144
chl-5,800
Lcm-1

50

RTD 4573