

GEOLOGICAL REPORT

SAMPLE LOG

COMPANY Barline Oil, LLC

LEASE Vohs Trust Well No. 1

FIELD Weston Stockade

LOCATION NE NE NW

SEC. 34 TWP. 8 S. RGE. 13 W.

COUNTY Osborne State Kansas

CONTRACTOR WM Dr-19 RIG NO. 12

COMMENCED DRILLING 6/12/12

COMPLETED DRILLING 6/17/12

RDT 3550 FEET LTD 3548 FEET

MUD UP AT 2200 FEET MUD TYPE CHEMICAL

ELEVATIONS

KB 1690 FEET

DF \_\_\_\_\_ FEET

GL 1682 FEET

MEASUREMENTS ARE ALL FROM KB

CASING

8 5/8 @ 201 (210)

W/D & A

ELECTRICAL SURVEYS

CNL / CDL

DIL

MEL

TO RTD 3550 FEET

TO \_\_\_\_\_ FEET

TO \_\_\_\_\_ FEET

TO \_\_\_\_\_ FEET

TO \_\_\_\_\_ FEET

TO \_\_\_\_\_ FEET

TO \_\_\_\_\_ FEET

TO \_\_\_\_\_ FEET

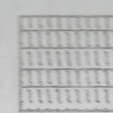
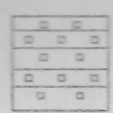
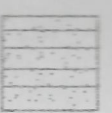


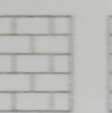
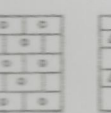
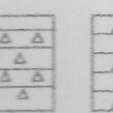
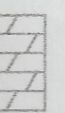
DRILL STEM TESTING BY Trilobite Testing

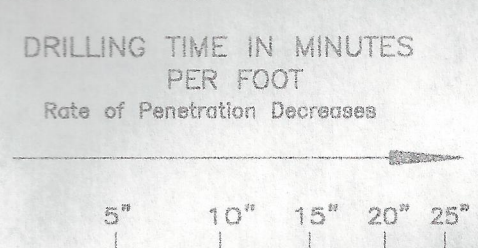
GAS DETECTOR MBC Hot Wire & Chromatograph

REMARKS It was recommended this well be plugged and abandoned, since it was 17' low on top the Lansing, and has poor porosity in the A, B, and C zones, with rare spotted st. There were no other shows in the well.

Bill Rep

LEGEND

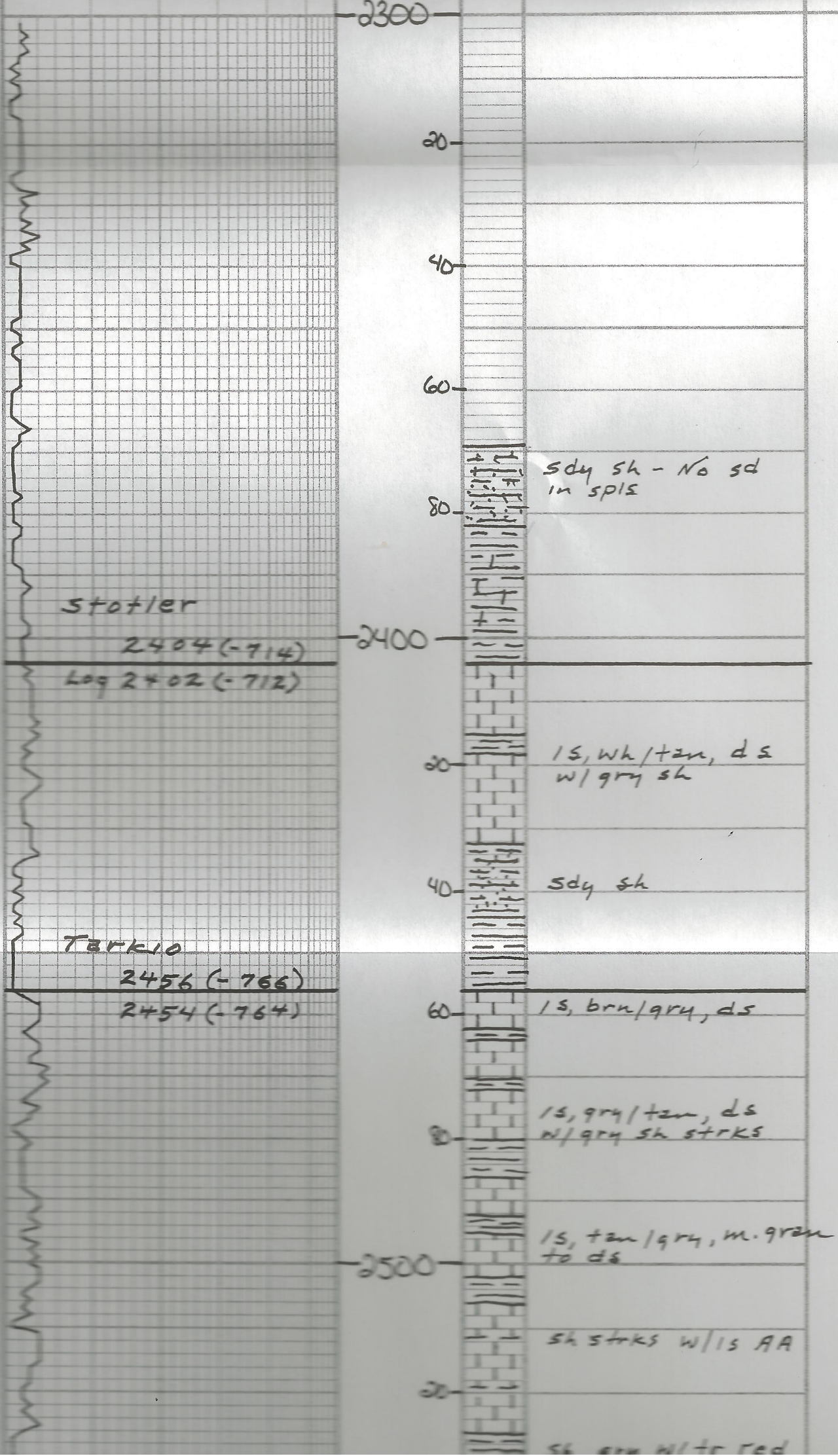
-   
Anhydrite
-   
Salt
-   
Sandstone
-   
Shale
-   
Carb sh
-   
Limestone
-   
Ool. Lime
-   
Chert
-   
Dolomite



LITHOLOGY	SAMPLE DESCRIPTIONS	OIL SHOWS	REMARKS
2300			

Anhy 887  
E/hog.

Anky 887  
E/hog.



2300

20

40

60

80

sdy sh - No sd  
in spls

Stotler

2404 (-714)

Log 2402 (-712)

2400

20

ls, wh/tan, ds  
w/gray sh

40

sdy sh

TARKIO

2456 (-766)

2454 (-764)

60

ls, brn/gray, ds

80

ls, gray/tan, ds  
w/gray sh strks

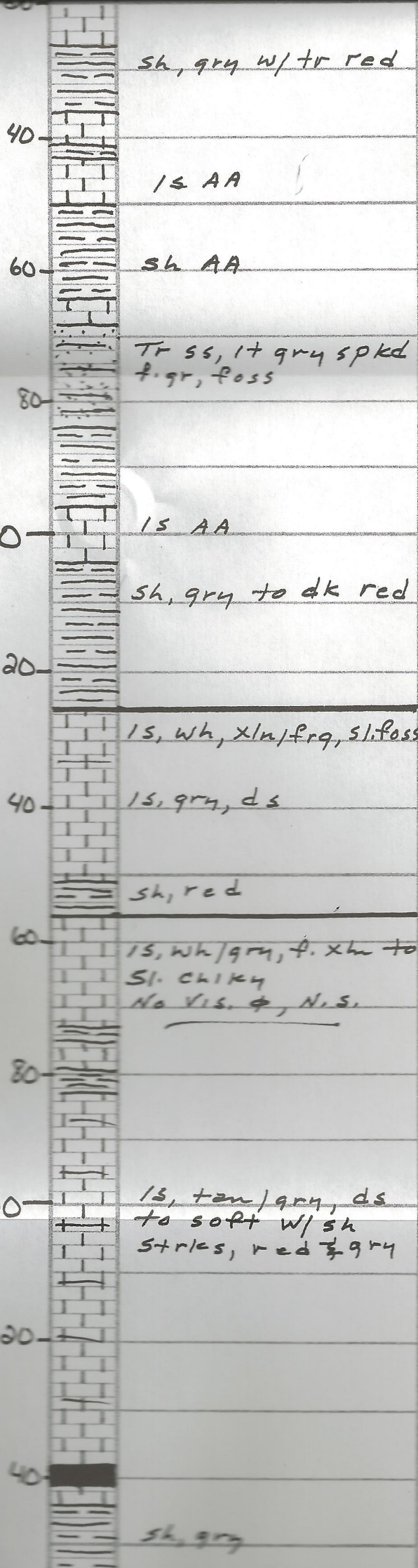
2500

20

ls, tan/gray, m. gray  
to ds

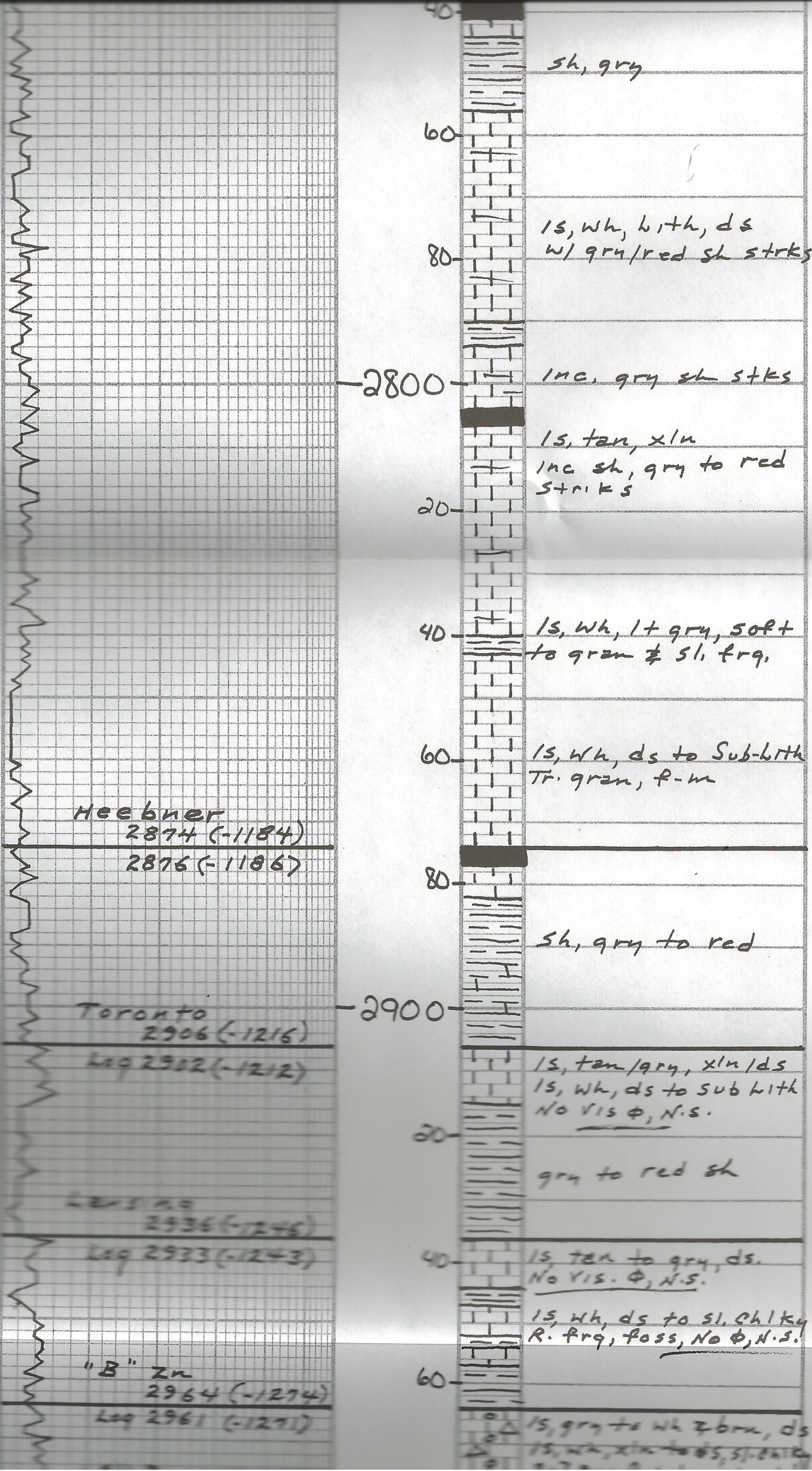
sh strks w/ls AA

sh strks w/ls red



Howard  
 2625 (-935)  
 2621 (-931)

Topeka  
 2656 (-966)  
 2653 (-963)



Heebner  
 2874 (-1184)  
 2876 (-1186)

Toronto  
 2906 (-1216)  
 Log 2902 (-1212)

Log 2936 (-1246)  
 Log 2933 (-1243)

"B" Zn  
 2964 (-1274)  
 Log 2961 (-1271)

sh, gry  
 ls, wh, with, ds  
 w/ gry/red sh strks  
 inc. gry sh strks  
 ls, tan, xln  
 inc sh, gry to red  
 strks  
 ls, wh, lt gry, soft  
 to gran & sl. frq.  
 ls, wh, ds to sub-with  
 Tr. gran, f-m  
 sh, gry to red  
 ls, tan/gry, xln/ds  
 ls, wh, ds to sub with  
 No vis. phi, N.S.  
 gry to red sh  
 ls, tan to gry, ds.  
 No vis. phi, N.S.  
 ls, wh, ds to sl. chky  
 R. frq, poss, No phi, N.S.  
 ls, gry to wh & brn, ds  
 ls, wh, xln to ds, sl. frq.

CFS  
~~2900~~  
 VIS  
 WT  
 WH  
 CFS  
 2918

No DST's

Log 2961 (-1271)

"C" Zn  
2980 (-1290)  
2982 (-1292)

1s, gry to wh & brn, ds  
1s, wh, xln to ds, sl. chiky  
2-3 pcs f. oolc. w/ sptd  
brn stn - Tr Δ, lt gry, oPR  
No oolc or FO.  
1s, wh, p. der ool. w/P  
φ & 2 pcs w/ sptd brn stn  
1s, wh, xln/ds - sl. chiky  
No φ, N.S.

3000

1s, wh, frq - blocky  
1s, dk gry/brn, ds  
sl. foss

20

sh, gry to red

"F" Zn  
3034 (-1344)  
3035 (-1345)

1s, crm, m. xln  
No vis. φ, N.S.

40

1s, wh, ds to sub with

60

AA

1s, wh to gry & brn, ds

80

sh, gry to red

1s, wh to gry, ds

3100

1s AA w/ sh strks,  
gry & red

20

sh, gry/red

"J" Zn  
3125 (-1435)  
Log 3125 (-1435)

1s, tan to wh, ds

40

Tr soft s/chiky

1s, tan & wh, ds,  
sl. chiky

60

Tr Δ, gry mott, oPR

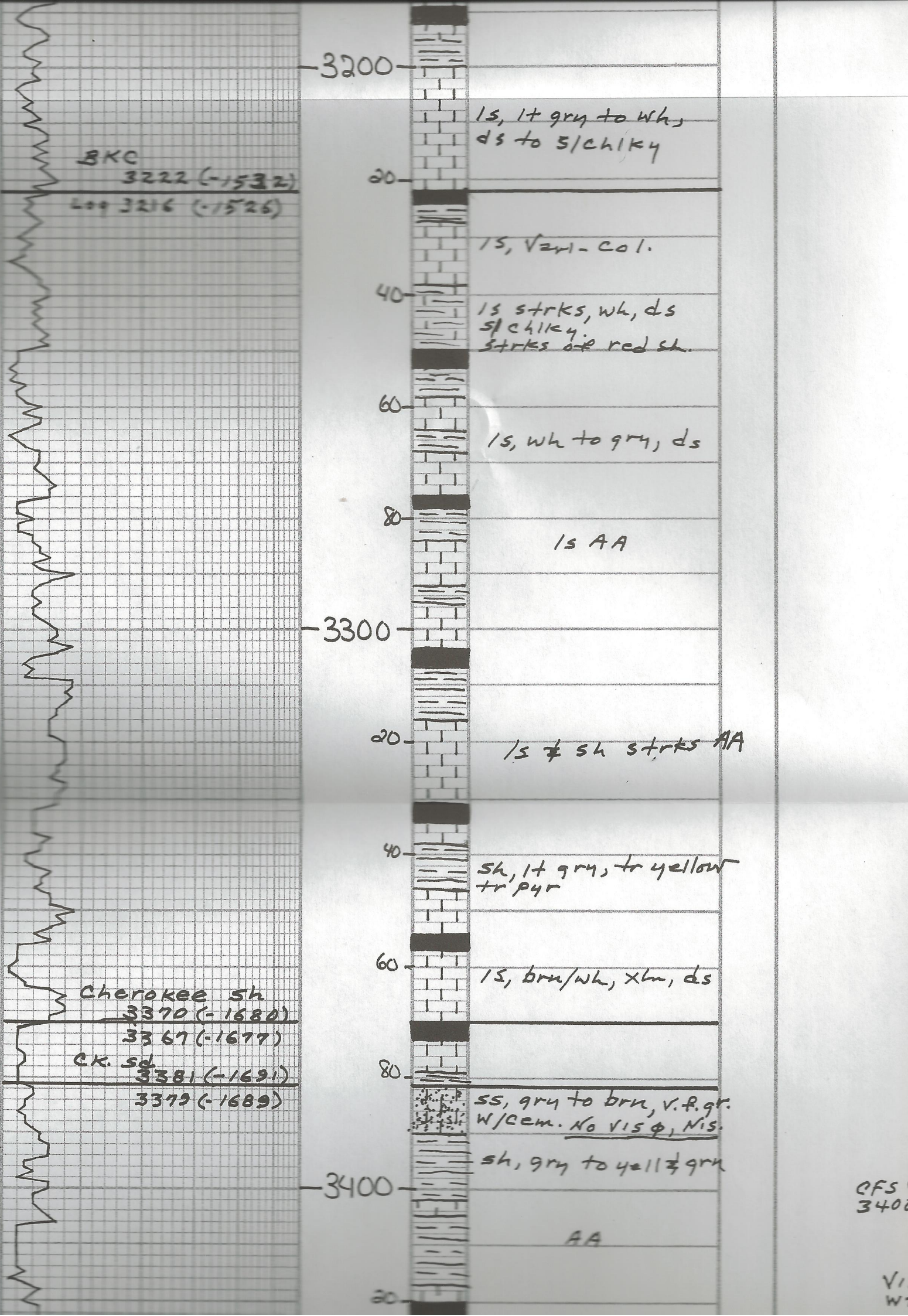
1s, tan, ds, sl. foss.

80

AA

CF 301

CF 30



3200

ls, lt gry to wh,  
ds to s/chiky

BKC

3222 (-1532)

20

3216 (-1526)

ls, var. col.

40

ls strks, wh, ds  
s/chiky.  
strks of red sh.

60

ls, wh to gry, ds

80

ls AA

3300

20

ls & sh strks AA

40

sh, lt gry, to yellow  
tr pyr

60

ls, brn/wh, xln, ds

Cherokee sh

3370 (-1680)

3367 (-1677)

ck. sd

3381 (-1691)

80

3379 (-1689)

ss, gry to brn, v. f. gr.  
w/cem. No vis φ, nis.

3400

sh, gry to yell & gry

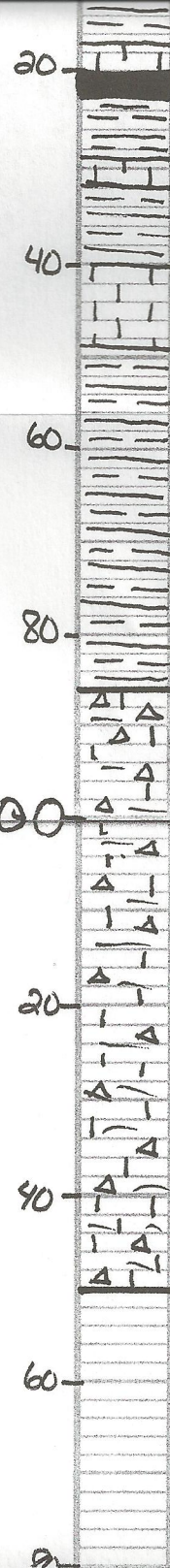
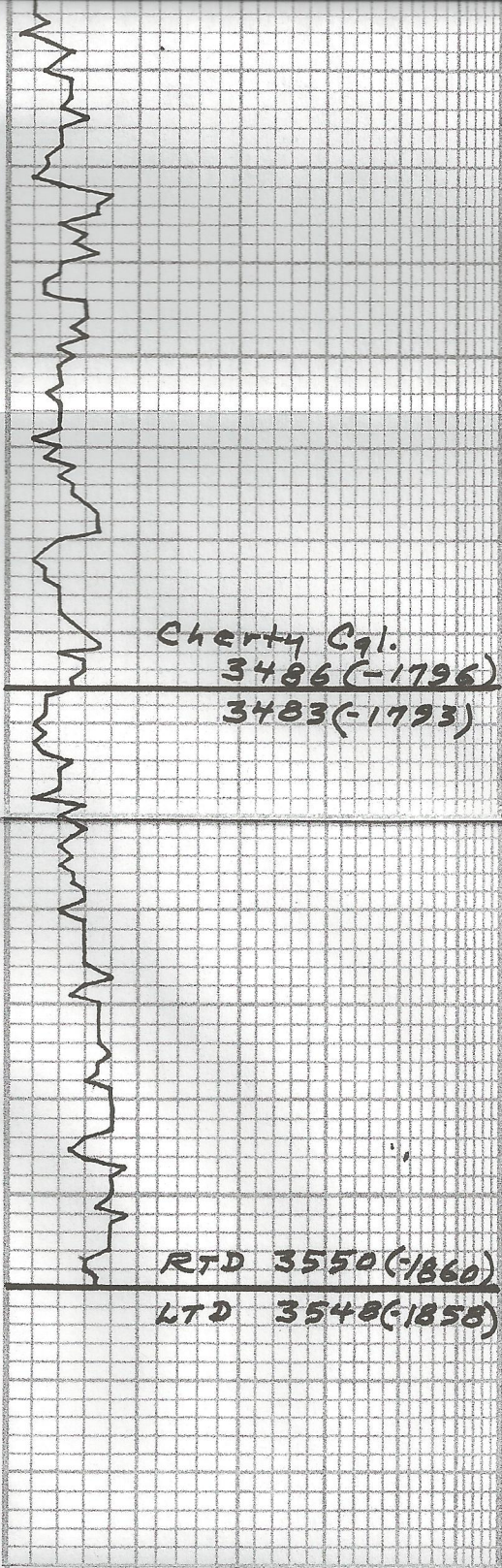
AA

20

CFS  
3400

V  
W

V  
W  
W



1s, grn/wh & tan,  
xln, ds, sl. foss

1s AA

sh, soft, red & v.c.

Cherty Cgl.  
3486 (-1796)  
3483 (-1793)

cht, wh to tan, opq  
w/v.c. sh AA & tr 1s,  
wh, grn, ds.

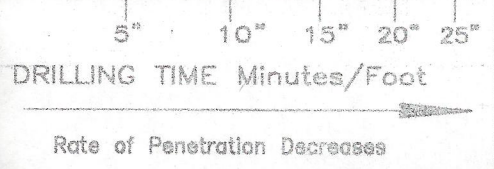
-3500

inc 1s, wh to tan,  
f. xln, ds to sl. cherty  
dec in Δ AA

1s, Δ, and v.c. sh  
AA

RTD 3550 (-1860)  
LTD 3548 (-1858)

CFS 30  
Circ 1 1/2  
for log



DEPTH

LITHOLOGY

SAMPLE DESCRIPTIONS

OIL SHOWS

REMARKS

CONTRACTOR WW Drilling  
LEASE Vohs Trust #1 IP  
ELEVATION 1690 KB RTD

LOCATION NE NE NW  
SEC 34 TWP 8 S. RNG 13 W  
COUNTY Osborne STATE Kansas

