



Office
(620) 588-4250

James C. Musgrove
Petroleum Geologist
212 Main St. • P.O. Box 215 • Clarita, KS 67525

Home
(620) 587-3444

GEOLOGIST'S REPORT

DRILLING TIME AND SAMPLE LOG

COMPANY Blueridge Petroleum Corp.
 LEASE Antenen #3-12
 FIELD _____
 LOCATION nw-sw-ne-nw (900 FNL / 1515 FWL)
 SEC 12 TWP 26 W RGE 19 S
 COUNTY NESS STATE Kansas
 CONTRACTOR Southwind Drilling (rig #70)
 SPUD 7/13/12 COMP 7/23/12
 RTD 4600 LTD 4600
 MUD UP 3700 TYPE MUD chemical displaced

ELEVATIONS
 KB 2543
 DF _____
 CL 2531
 Measurements Are All From -KB-
 CASING SURFACE 8581 ft 217
 PRODUCTION -none-
 ELECTRICAL SURVEYS
Superior Well Services;
DIL, CDL, CNL, MEL, Sonar

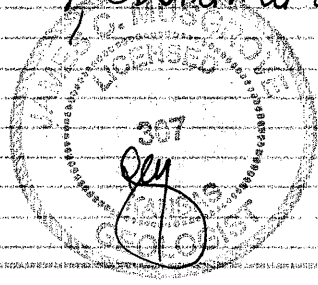
SAMPLES SAVED FROM 3700 TO _____
 DRILLING TIME KEPT FROM 3700 TO _____
 SAMPLES EXAMINED FROM 3700 TO _____
 GEOLOGICAL SUPERVISION FROM 3800 TO _____
 GEOLOGIST ON WELL Jim Musgrove



FORMATION TOPS	LOG	SAMPLES
anhydrite	1811 +732	Mississippian 4511 - 1968
Base anhydrite	1849 +694	mass.
Heebner	3844 -1301	Dolomite 4523 - 1980
Toronto	3861 -1318	
Lansing	3883 -1340	RTD 4600
Stark sh.	4135 -1592	LTD 4600
Base Kansas City	4233 -1690	} -2057
Marmaton	4259 -1716	
Pawnee	4343 -1800	
FT. Scott	4406 -1863	
Cherokee Shale	4432 -1889	

7505

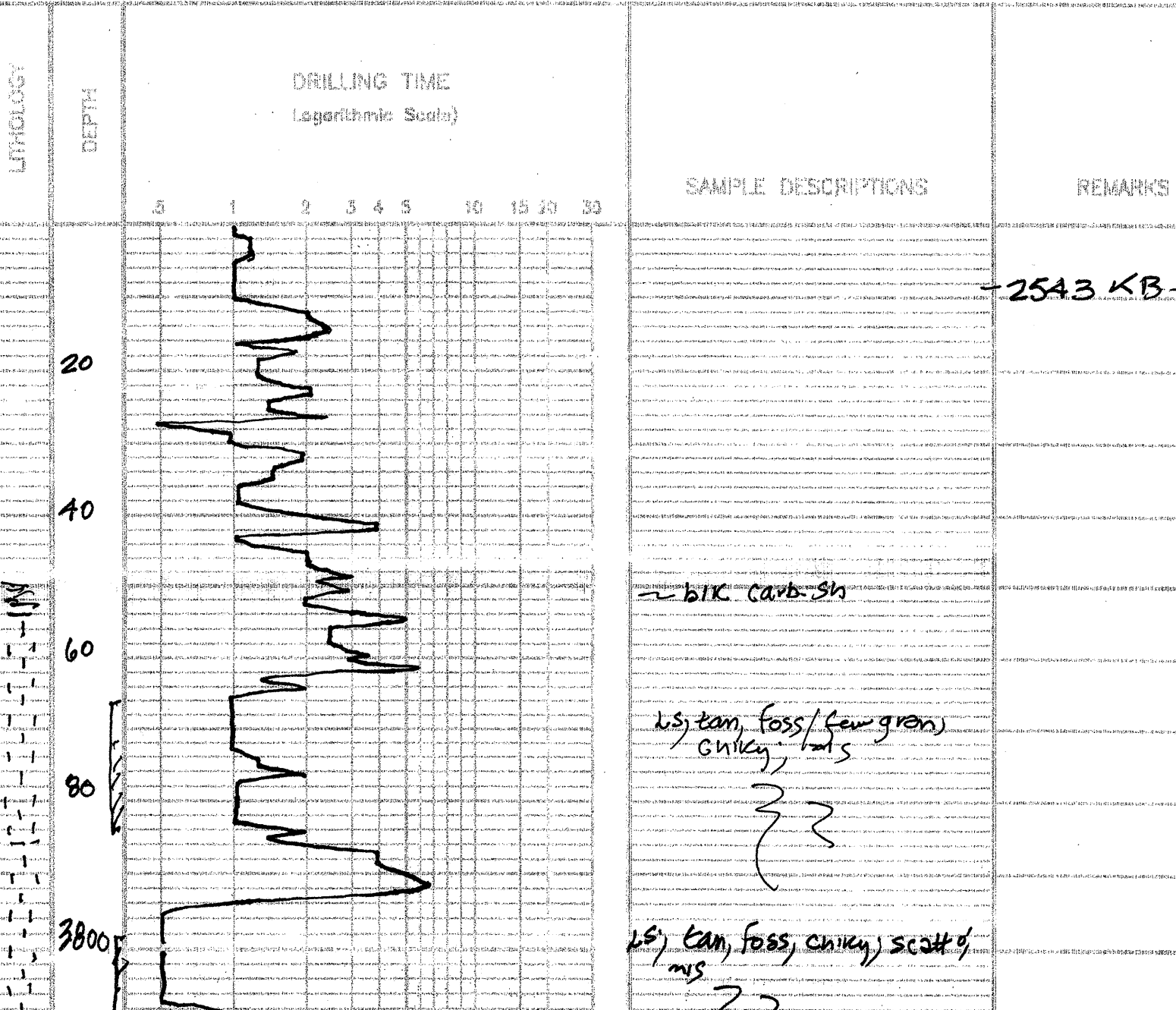
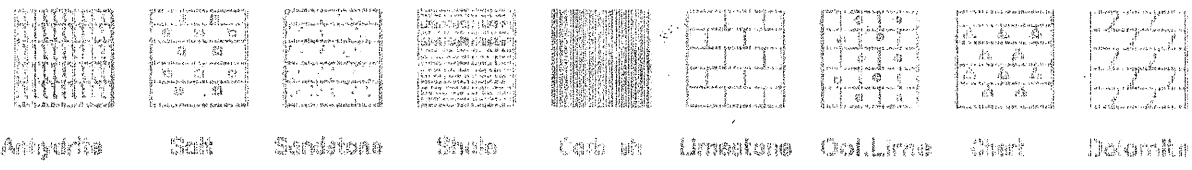
The Antonen #3-12; was plugged & abandoned at the RTD 4600

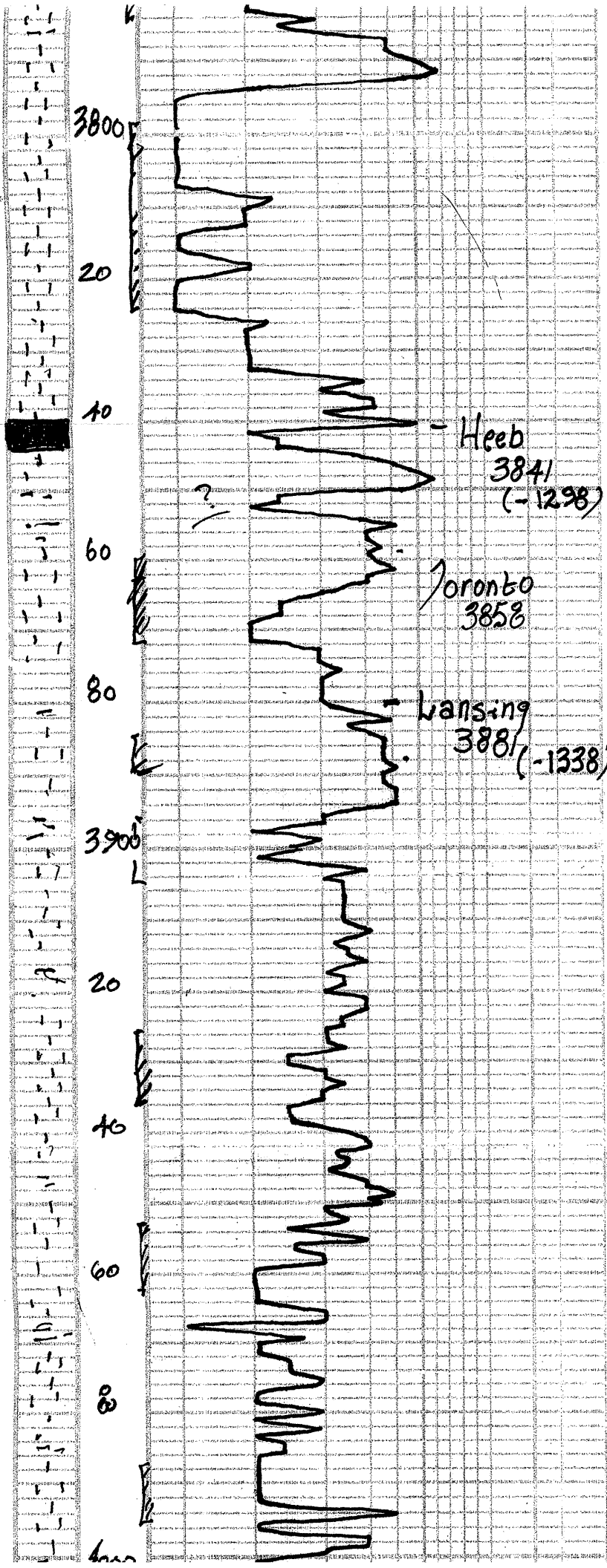


Respectfully submitted;
James C. Muesone
Petroleum Geologist.

LOG 7702

LEGEND





LS; tan, foss, chky, scatt o,
ms

32
aol

32
grn; tr. slightly
dolomitic ls

32
~ Jr. blk carb. sh

~ gy/green lincy sh

LS; wh/gm, foss, chky
+ wh A.

~ LS, gray; tan, few
oolichmy; Poor o

~ LS, gray, wh, med x b,
ool/foss, chky

LS, gray fxl dense
tr pp-vuggy type,
N/S

LS, cm-gry fxl sl. foss
chky poor vis. o

blk carb shale

LS; buff-gray highly foss
chky in part poorly devo
+ cm-gry foss bone A

4000

20

40

60

80

4100

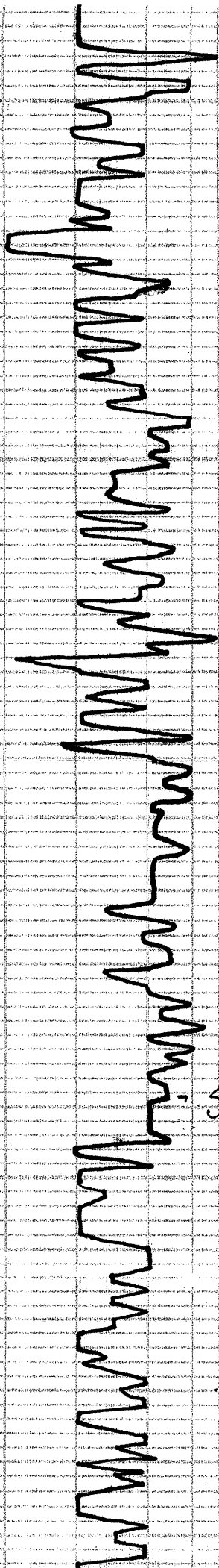
20

40

60

80

4200



Stark 4138

Chlky in part poorly dev'd
+ cm. gry foss bonny A
N/S

Ls; cm fix chlky
foss sparry cal cement
ool in part N/S
+ gry-wh ool opagus A

Ls. buff-ten-cm dense
Plus blk carb shale

Ls. cm buff fmed xl dense
foss/ool poor vis. N/S
+ gry-wh bonny A

Ls; ca poorly dev'd N/S
+ Δ as

Ls; cm-ten fix chlky
ool dense sl; Ay
+ gry-wh-cm, ool; Δ

blk carb shale

Ls wh/gry; foss; chlky
+ amber A

32

blk carb sh

Ls; wh/gry; fix; few
ool/foss; small & ml.

0710

20

40

60

80

430

20

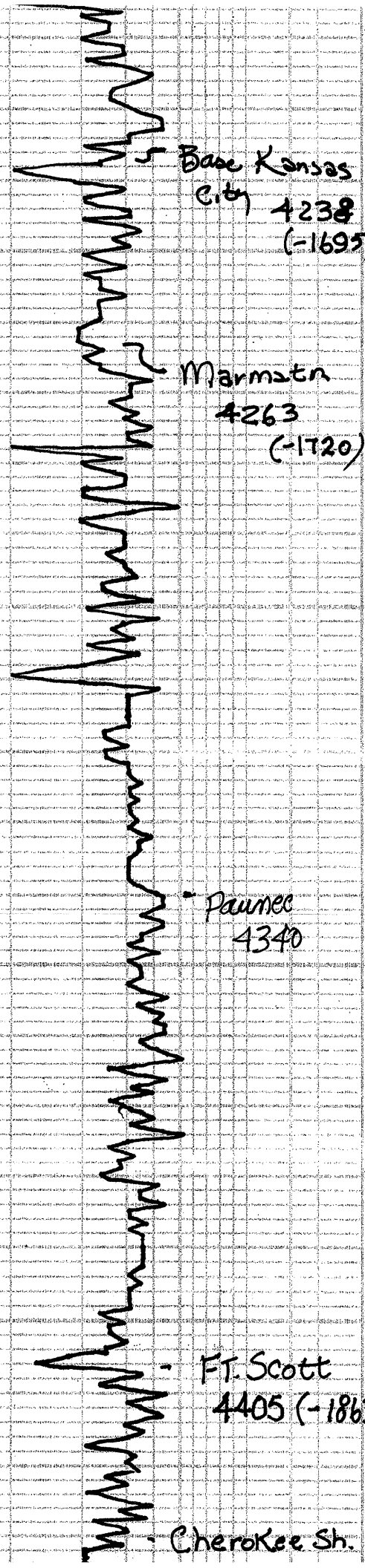
40

60

80

4400

20



Base Kansas
City 4238
(-1695)

Marmaton
4263
(-1720)

Pawnee
4340

Ft. Scott
4405 (-1863)

Cherokee Sh.

v.c. sh.
jr.

ls, tan, fxy, gran;
green, n/s

32
aa; jr. gray Δ

32
ls, gy/wht, fxy

ls, gy; tan highly ool;
cherty - Δ

ls, gm; f-med, cherty n/s

32

ls, gm; fxy, shaly in
part n/s

32

blc carb. sh.

ls, wh/gm; fxy; slightly
ool; cherty

32

new carb. sh

Unexposed sh.
4431 (-1888)

dk carb. sh

ls, tan, gy - chky
+ gm Δ

dk carb. sh.

ls, gy; chky + gm Δ

wa
wa

Dr. sd, v. fg; sub rounded; Poorly
+ Dr. gm foss Δ

sd, wh/v fg; sub rounded; Poorly
dev; brown/dk brown; in stn
1/30, no odor.
+ tan gm Δ

ls, wh/gm; fr. chky
- dry (dk)

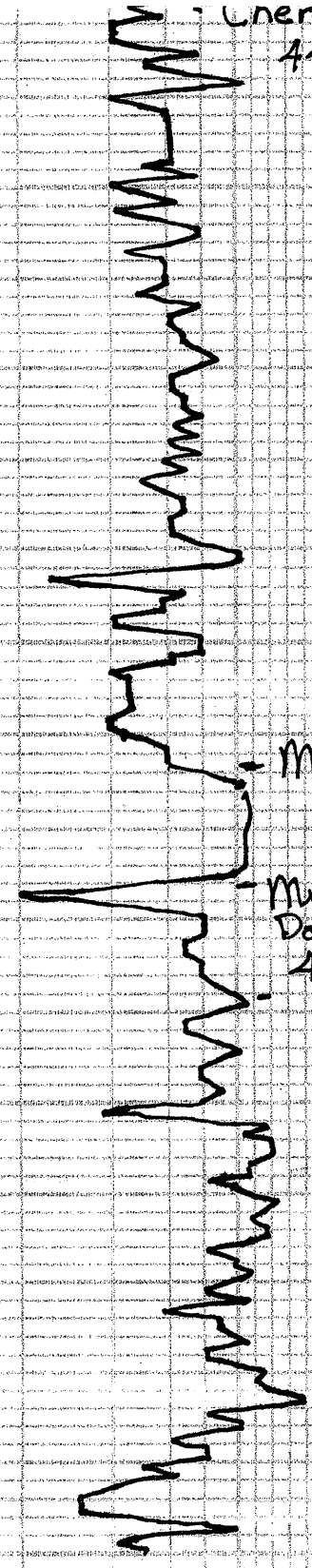
dol, tan, buff; fr. h;
sug. scat d; ms

wa
slightly dry; Poorly

wa
+ ls wh/gm; chky
- dense

Dr. wh/ls; fr. tan; sug.
dolomite ms

40
60
80
4500
20
40
60
80
4600



Miss
4513
(-1970)

Miss
Dolomite
4525
(-1982)

RTD 4600