

**OPERATOR**

Company: TDI, INC  
 Address: 1310 BISON ROAD  
 HAYS, KANSAS 67601

Contact Geologist: TOM DENNING  
 Contact Phone Nbr: 785-259-3141  
 Well Name: ROSEMARY # 1  
 Location: SE SW SW Sec.9-15s-19w  
 Pool: WILDCAT  
 State: KANSAS

API: 15-051-26,347-00-00  
 Field: UNNAMED  
 Country: USA



**TDI, Inc.**  
 1310 BISON ROAD  
 HAYS, KANSAS 67601  
 (785) 628-2593

Scale 1:240 Imperial

Well Name: ROSEMARY # 1  
 Surface Location: SE SW SW Sec.9-15s-19w  
 Bottom Location:  
 API: 15-051-26,347-00-00  
 License Number: 4787  
 Spud Date: 8/16/2012 Time: 1:15 PM  
 Region: ELLIS COUNTY  
 Drilling Completed: 8/22/2012 Time: 1:55 PM  
 Surface Coordinates: 330' FSL & 990' FWL  
 Bottom Hole Coordinates:  
 Ground Elevation: 2019.00ft  
 K.B. Elevation: 2029.00ft  
 Logged Interval: 2900.00ft To: 3725.00ft  
 Total Depth: 3725.00ft  
 Formation: LANSING-KANSAS CITY  
 Drilling Fluid Type: FRESH WATER GEL/CHEMICAL

**SURFACE CO-ORDINATES**

Well Type: Vertical  
 Longitude: Latitude:  
 N/S Co-ord: 330' FSL  
 E/W Co-ord: 990' FWL

**LOGGED BY**

Company: SOLUTIONS CONSULTING  
 Address: 108 W 35TH  
 HAYS, KS 67601

Phone Nbr: (785) 639-1337  
 Logged By: Geologist Name: HERB DEINES

**CONTRACTOR**

Contractor: SOUTHWIND DRILLING, INC.  
 Rig #: 1  
 Rig Type: MUD ROTARY

Rig Type: MUD ROTARY  
Spud Date: 8/16/2012  
TD Date: 8/22/2012  
Rig Release: 8/23/2012

Time: 1:15 PM  
Time: 1:55 PM  
Time: 5:00 AM

### ELEVATIONS

K.B. Elevation: 2029.00ft  
K.B. to Ground: 10.00ft

Ground Elevation: 2019.00ft

### NOTES

RECOMMENDATION TO PLUG AND ABANDON WELL DUE TO NEGATIVE RESULTS OF DST # 1, LOW STRUCTURE AND LACK OF DEVELOPEMENT IN LOWER LKC ZONES.

WELL LOGGED BY PIONEER ENERGY SERVICES: DUAL INDUCTION LOG, DUAL COMPENSATED POROSITY LOG

DRILL STEM TESTER: TRILOBITE TESTING: 1 DRILL STEM TEST RAN

### FORMATION TOPS SUMMARY AND CHRONOLOGY OF DAILY ACTIVITY AND DEPTH

#### ROSEMARY # 1

330' FSL & 990' FWL, SW/4

Sec.9-15s-19w


2019' GL 2029' KB

<u>FORMATION</u>	<u>SAMPLE TOPS</u>	<u>LOG TOPS</u>
Anhydrite		1264+ 765
B-Anhydrite		1298+ 731
Topeka		3015- 986
Heebner Shale		3285-1256
Toronto		3306-1277
LKC		3330-1301
BKC		3580-1551
Conglomerate Sand		3677-1648
Arbuckle		3694-1665
RTD	3725-1696	
LTD		3728-1699

### SUMMARY OF DAILY ACTIVITY

- 8-16-12 RU, Spud
- 8-17-12 851', set 8 5/8" surface casing to 1261' w/450 sacks of Common, 2%Gel, 3% CC, plug down 10:00 PM, WOC 12 hours, slope 1 degree
- 8-18-12 1275', drilling
- 8-19-12 2142', drilling
- 8-20-12 2860', drilling
- 8-21-12 3364', drilling, DST # 1, 3344'-3364'
- 8-22-12 3560', drilling, RTD 3725', slope 3/4 degree, logs, P&A
- 8-23-12 3725' finish plugging well and RD

### DST # 1 TEST SUMMARY

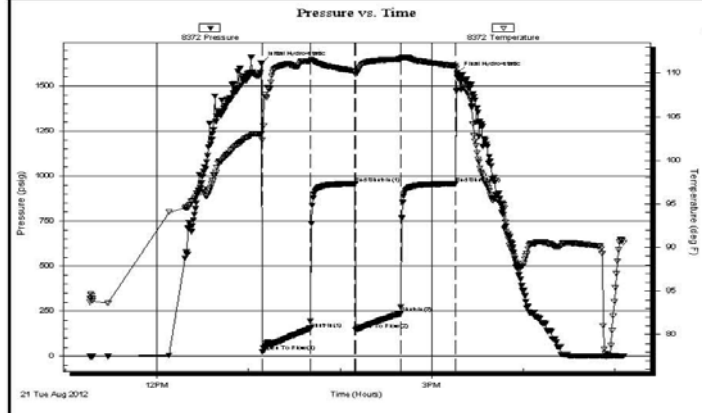
	<b>DRILL STEM TEST REPORT</b>	
	TDI inc 1310 Bison Rd Hays Ks 67601 ATTN: Herb Deines	<b>9-15-19 Ellis</b> <b>Rosemary #1</b> Job Ticket: 47918 <b>DST#: 1</b> Test Start: 2012.08.21 @ 11:16:05

**GENERAL INFORMATION:**

Formation: <b>LKC"C"</b>	Deviated: No Whipstock:      ft (KB)	Test Type: Conventional Bottom Hole (Initial)
Time Tool Opened: 13:09:10	Time Test Ended: 17:06:09	Tester: Andy Carreira
Interval: <b>3344.00 ft (KB) To 3364.00 ft (KB) (TVD)</b>		Unit No: 39
Total Depth: 3364.00 ft (KB) (TVD)	Hole Diameter: 7.88 inches	Reference Elevations: 2029.00 ft (KB)
Hole Condition: Poor		2019.00 ft (CF)
		KB to GR/CF: 10.00 ft

<b>Serial #: 8372</b>	<b>Outside</b>		
Press@RunDepth: 237.41 psig @ 3345.00 ft (KB)	Capacity: 8000.00 psig		
Start Date: 2012.08.21	End Date: 2012.08.21	Last Calib.: 2012.08.21	
Start Time: 11:16:05	End Time: 17:06:10	Time On Btm: 2012.08.21 @ 13:08:10	
		Time Off Btm: 2012.08.21 @ 15:16:50	

**TEST COMMENT:** IF:(30min) 3" in 2 min, 6" in 5 min, BOB in 15 min.  
 ISl:(30min) No Return  
 FF:(30min) 3" in 4 min, 6" in 9 min, 11" in 28 min.  
 FSl:(30min) No Return



PRESSURE SUMMARY			
Time (Min.)	Pressure (psig)	Temp (deg F)	Annotation
0	1629.93	102.97	Initial Hydro-static
1	25.14	102.31	Open To Flow (1)
33	153.84	111.35	Shut-In(1)
62	958.03	110.22	End Shut-In(1)
62	147.57	109.85	Open To Flow (2)
92	237.41	111.58	Shut-In(2)
128	957.25	110.82	End Shut-In(2)
129	1572.51	109.88	Final Hydro-static

Recovery		
Length (ft)	Description	Volume (bbl)

Gas Rates			
	Choke (inches)	Pressure (psig)	Gas Rate (Mcf/d)

500.00	GMV	7.01
0.00	GIP= 30 ft	0.00

Trilobite Testing, Inc

Ref. No: 47918

Printed: 2012.08.22 @ 08:33:15

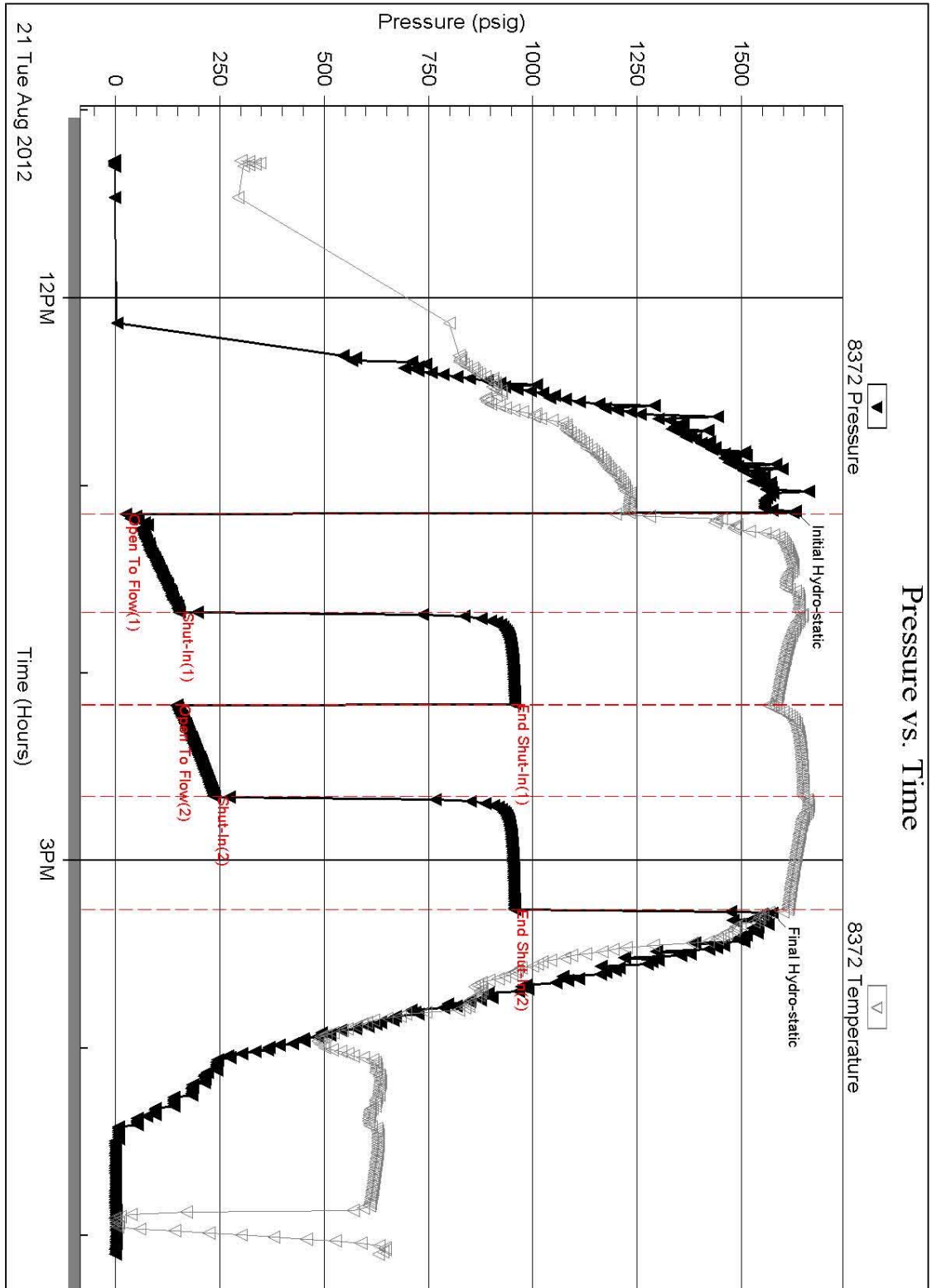
### DST # 1 EXPANDED CHART

Serial #: 8372

Outside TDI Inc

Rosemary #1

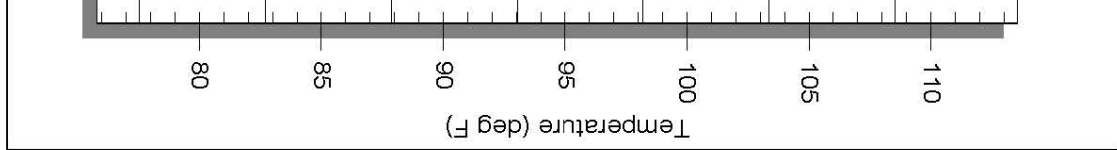
DST Test Number:



Trilobite Testing, Inc

Ref. No: 47918

Printed: 2012.08.22 @



**ROCK TYPES**

- |  |          |  |            |  |            |  |          |
|--|----------|--|------------|--|------------|--|----------|
|  | Cht vari |  | Dolsec     |  | shale, gry |  | Ss       |
|  | Congl    |  | Lmst fw<7  |  | Carbon Sh  |  | Dol Lime |
|  | Chtcongl |  | Lmst fw>7  |  | shale, red |  | CglSandy |
|  | Dolprim  |  | shale, grn |  | Shcol      |  |          |

**ACCESSORIES**

**MINERAL**

- Nodules
- Pyrite
- Sandy
- Chert White

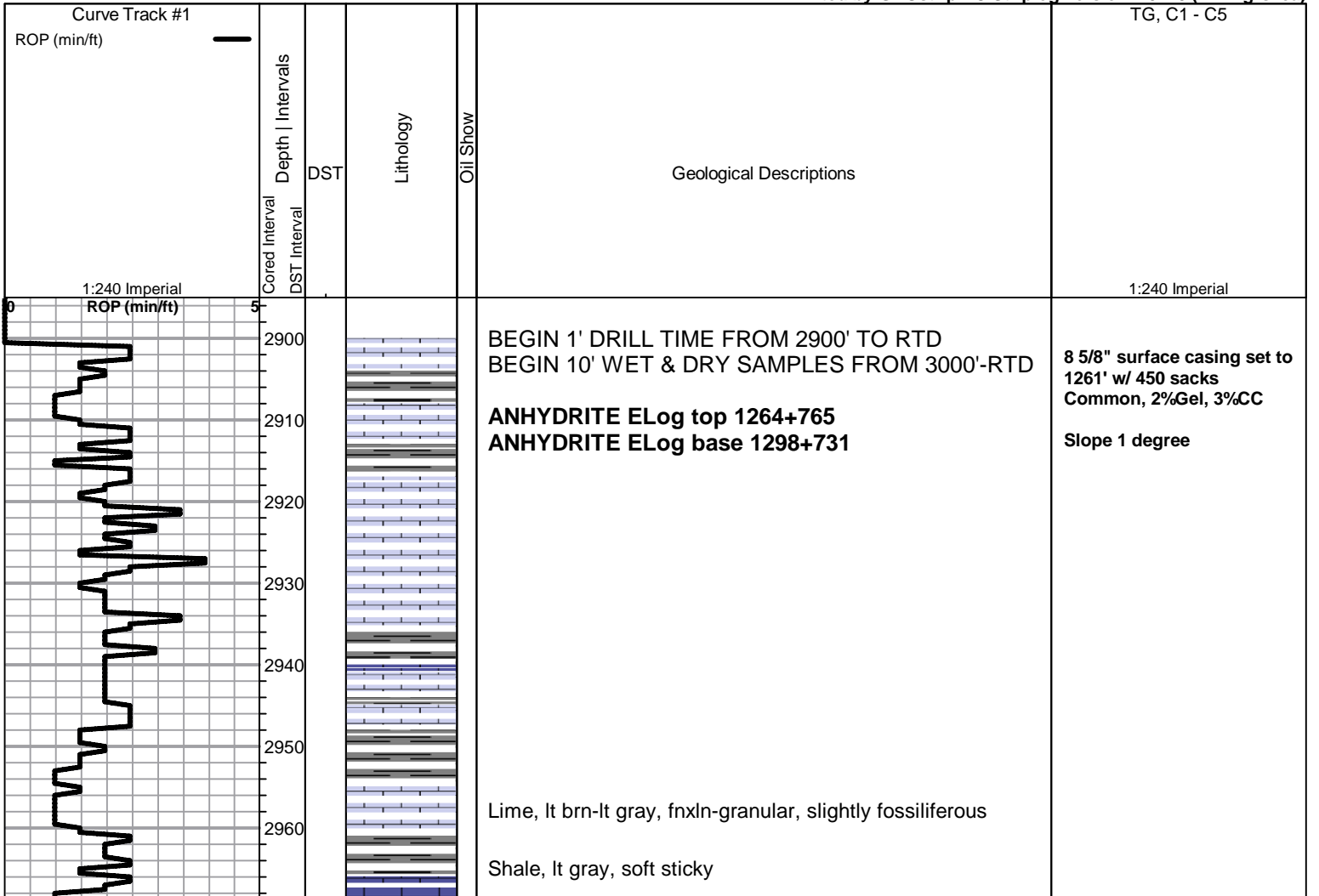
**FOSSIL**

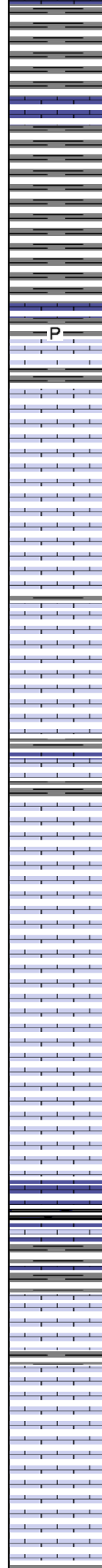
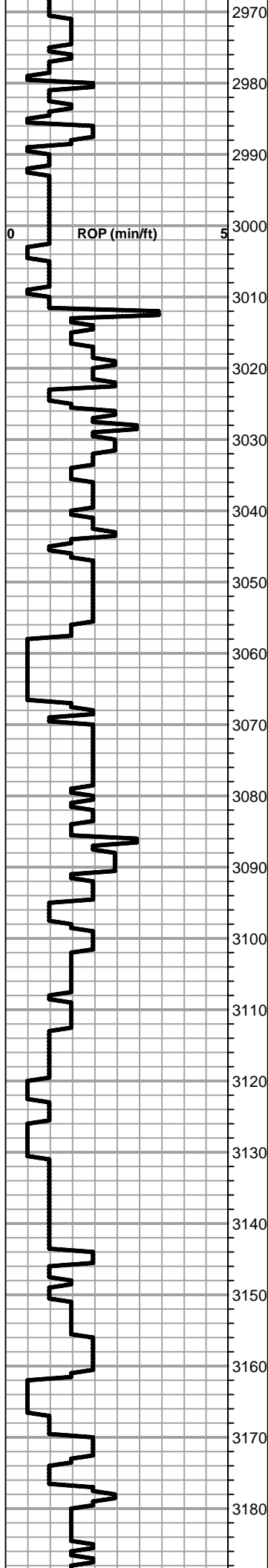
- Oolite
- Oomoldic

**OTHER SYMBOLS**

**DST**

- DST Int
- DST alt
- Core





Shale, lt gray-lt green, soft

Lime, lt-med gray, fnxln, slightly fossiliferous

Shale, lt-med gray, soft blocky

Lime, dark brn, fnxln, fossiliferous

**TOPEKA ELog 3015-986**

Lime, lt-med brn, fnxln, slightly fossiliferous

Lime, crm-lt -med brn, fnxln, slightly fossiliferous

Lime, crm-lt brn, fn-vfxln, microfossiliferous, hard

Lime, lt-brn-brn-gray, fnxln

Lime, crm-lt brn, fnxln, soft chalk in part

Lime, lt brn-grayish brn, granular, slightly chalky, NS

Lime, lt brn-lt grayish brn, fnxln

Lime, lt-med brn-grayish brn, fnxln

Lime, med brn-grayish brn, fnxln, bedded chalk in part

Lime, lt-med brn, fnxln with chalky granular in part

Lime, lt-med brn, granular with chalk, slightly fossiliferous

Lime, lt-dark brn, granular

Shale, black carbonaceous, blocky, fissile

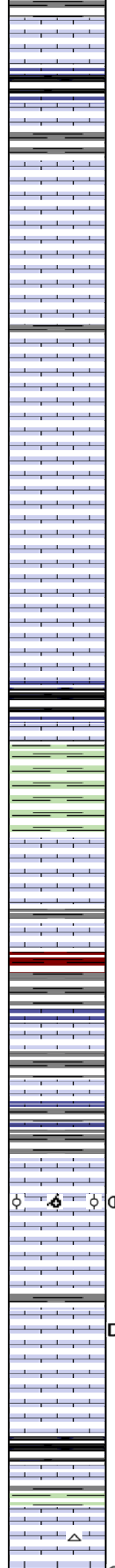
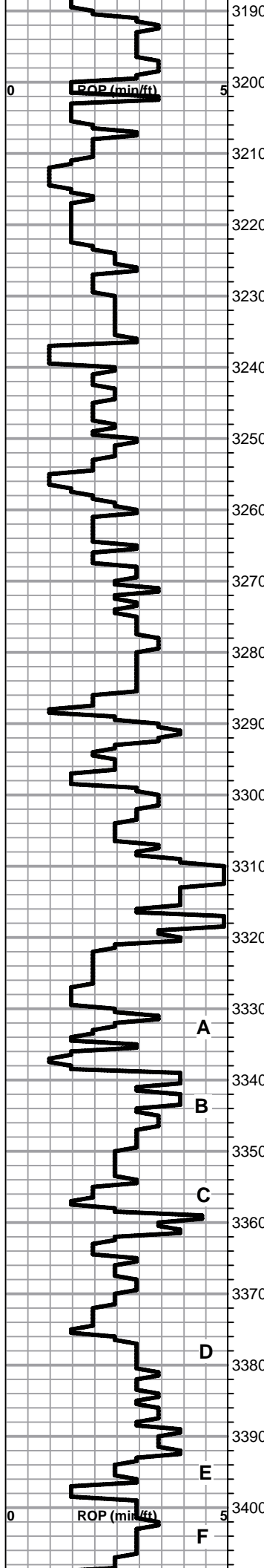
Lime, lt-dark brn, fnxln, slightly fossiliferous

Lime, crm-lt brn, fnxln, chalky white wash

Lime, crm-tan, granular, chalky

Lime, tan-lt brn, fnxln-granular, chalky

Lime, tan-lt brn, fnxln, chalky



Lime, tan-lt brn, fnxln-vfxln, chalky in part

Shale, black carbonaceous, blocky, fissile

Lime, lt-med brn, fnxln, fossiliferous in part

Lime, tan-lt brn, granular, chalky with sticky clumps in part

Lime, lt-brn-tan-lt grayish brn, fnxln-granular, chalky

Lime, lt-brn-grayish brn, fnxln, slightly fossiliferous

Lime, tan-grayish brn, fnxln, chalk in part

Lime, lt brn, fnxln-granular, slightly chalky

Lime, lt-med brn, fn-vfxln, slightly fossiliferous

Lime, crm-lt brn, fnxln, slightly fossiliferous

**HEEBNER SHALE ELog 3285-1256**

Shale, black carbonaceous, fissile

Lime, med brn, fnxln, slightly fossiliferous

Shale, med gray-lime green, soft

**TORONTO ELog 3306-1277**

Lime, white, fnxln-cryptoxln, slight bedded chalk in part NS

Lime, white, fnxln grading into lt gray-lt green fnxln lime  
Shale, reddish brn, blocky grading into gray soft shale

**LKC ELog 3330-1301**

Lime, lt- brn-grayish brn, fn-vfxln, NS

Lime, lt brn-lt gray, fn-vfxln, slightly fossiliferous

Lime,lt brn, fnxln with scattered oolitic-oomoldic lime in part  
with scattered staining, globules of free oil, vlt odor.

Lime, lt-med brn, fn-vfxln

Lime, tan-lt brn, mostly fnxln with chips containing gilsonite,  
poor visible porosity

Lime, crm-tan, fn-vfxln

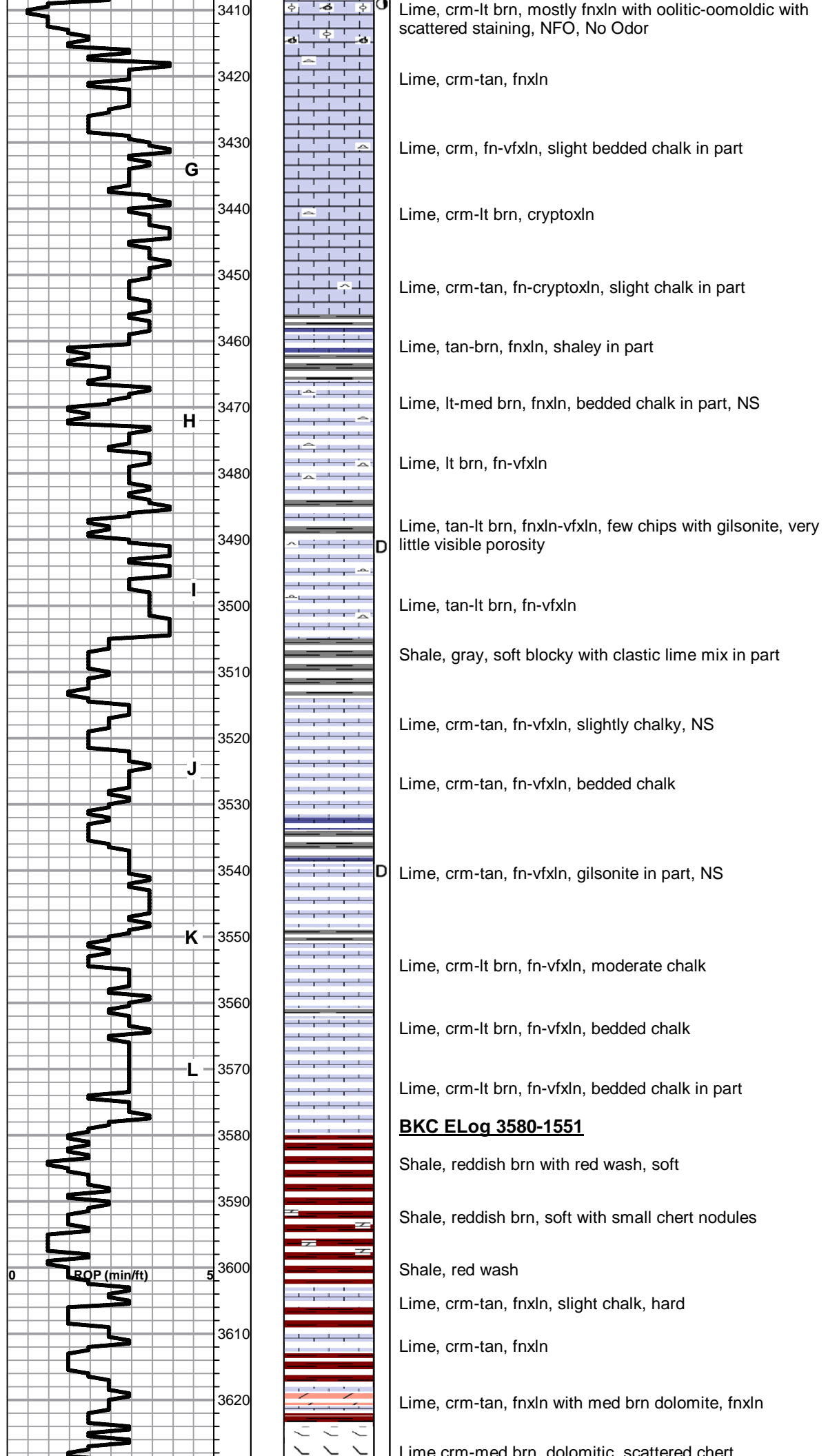
Shale, gray-black carbonaceous, fissile, blocky

Lime, med brn, fnxln

Shale, lt green, forming soft mud balls

Lime, crm-tan, fnxln, bedded chalk in part

**DST # 1 3344'-3364'**  
**SEE HEADER FOR TEST**  
**SUMMARY**







# QUALITY OILWELL CEMENTING, INC.

Federal Tax I.D.# 20-2886107

Phone 785-483-2025  
Cell 785-324-1041

Home Office P.O. Box 32 Russell, KS 67665

No. 723

Date	8-16-10	Sec.	9	Twp.	13	Range	19	County	Ellis	State	KS	On Location	4:30 pm	Finish	10:00 pm
Lease	Rosemary	Well No.	#1	Location		Ahtipho 3W 25 & N 10									
Contractor	Southwind #1					Owner									
Type Job	Surface					To Quality Oilwell Cementing, Inc. You are hereby requested to rent cementing equipment and furnish cementer and helper to assist owner or contractor to do work as listed.									
Hole Size	12 1/4					T.D.					1275				
Csg.	858					Depth					1273				
Tbg. Size						Depth									
Tool						Depth									
Cement Left in Csg.	28.42					Shoe Joint					28.42				
Meas Line						Displace					79 BL				
										The above was done to satisfaction and supervision of owner agent or contractor.					
										Cement Amount Ordered					
										450 3% CC 2% gel					

**EQUIPMENT**

Pumptrk #9	No.	Cementer	Matt	Common	450
Bulktrk #12	No.	Helper		Poz. Mix	
Bulktrk	No.	Driver	Trous	Gel.	9
		Driver	Cody	Calcium	16

**JOB SERVICES & REMARKS**

Remarks:	Hulls
Rat Hole	Salt
Mouse Hole	Flowseal
Centralizers	Kol-Seal
Baskets	Mud CLR 48
D/V or Port Collar	CFL-117 or CD110 CAF 38
	Sand
	Handling
	Mileage
Cement and G. Gel	

**FLOAT EQUIPMENT**

	Guide Shoe
	Centralizer
	Baskets
	AFU Inserts
	Float Shoe
	Latch Down
	Duffle plate
	Rubber plug
	Pumptrk Charge
	Mileage

Signature	[Signature]	Tax
		Discount
		Total Charge

