


OPERATOR			
Company:	TDI, INC		
Address:	1310 BISON ROAD HAYS, KANSAS 67601		
Contact Geologist:	TOM DENNING		
Contact Phone Nbr:	785-259-3141		
Well Name:	MUNSCH # 6		
Location:	SE NE NW SE Sec.9-15s-19w	API:	15-051-26,382-00-00
Pool:	INFIELD	Field:	SCHOENCHEN
State:	KANSAS	Country:	USA



1310 BISON ROAD
HAYS, KANSAS 67601
(785) 628-2593

Scale 1:240 Imperial

Well Name:	MUNSCH # 6	
Surface Location:	SE NE NW SE Sec.9-15s-19w	
Bottom Location:		
API:	15-051-26,382-00-00	
License Number:	4787	
Spud Date:	9/11/2012	Time: 5:00 PM
Region:	ELLIS COUNTY	
Drilling Completed:	9/16/2012	Time: 7:40 PM
Surface Coordinates:	2250' FSL & 1560' FEL	
Bottom Hole Coordinates:		
Ground Elevation:	2029.00ft	
K.B. Elevation:	2039.00ft	
Logged Interval:	2900.00ft	To: 3755.00ft
Total Depth:	3750.00ft	
Formation:	ARBUCKLE	
Drilling Fluid Type:	CHEMICAL/FRESH WATER GEL	

SURFACE CO-ORDINATES		
Well Type:	Vertical	
Longitude:		Latitude:
N/S Co-ord:	2250' FSL	
E/W Co-ord:	1560' FEL	

LOGGED BY



Company:	SOLUTIONS CONSULTING		
Address:	108 W 35TH HAYS, KS 67601		
Phone Nbr:	(785) 639-1337	Name:	HERB DEINES
Logged By:	Geologist		

CONTRACTOR			
Contractor:	SOUTHWIND DRILLING INC.		
Rig #:	1		
Rig Type:	MUD ROTARY		
Spud Date:	9/11/2012	Time:	5:00 PM
TD Date:	9/16/2012	Time:	7:40 PM
Rig Release:	9/17/2012	Time:	10:45 AM

ELEVATIONS			
K.B. Elevation:	2039.00ft	Ground Elevation:	2029.00ft
K.B. to Ground:	10.00ft		

NOTES

RECOMMENDATION TO PLUG AND ABANDON WELL DUE TO LOW STRUCTURE OF ARBUCKLE AND LACK OF DEVELOPMENT IN THE LANSING-KANSAS CITY.

WELL LOGGED BY PIONEER ENERGY SERVICES: DUAL INDUCTION LOG, DUAL COMPENSATED POROSITY LOG

NO DRILL STEM TESTS WERE RAN ON THIS WELL


FORMATION TOPS SUMMARY AND CHRONOLOGY OF DAILY ACTIVITY


MUNSCH # 6
SE NE NW SE
Sec.9-15s-18w
2029' GL 2139' KB


FORMATION	SAMPLE TOP	LOG TOP
Anhydrite	1208+ 831	1208+ 831
B-Anhydrite	1244+ 795	1244+ 795
Topeka	2997- 958	3006- 962
Heebner Shale	3277-1238	3279-1240
Toronto	3297-1258	3299-1260
LKC	3323-1284	3326-1287
BKC	3548-1509	3552-1513
Marmaton Mkr.	3608-1569	3611-1572
Arbuckle	3657-1618	3660-1621
RTD	3750-1711	
LTD		3755-1716


9-11-12	RU, Spud, set surface casing to 223.03' w/150 sxs. Common, 2%gel, 3%CC, Slope survey 3/4 degree
9-12-12	225' WOC, kick off 8:15AM
9-13-12	1575' drilling
9-14-12	2388' drilling
9-15-12	3100' drilling, displaced @ 2800'
9-16-12	3445' drilling, RTD 3750' @ 7:40 PM, slope 2 1/4 degrees
9-17-12	3750', logs, plug and abandon, plugging completed at 10:45 AM, RD

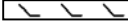
ROCK TYPES


 Cht vari


 Clystgy


 Chtcongl


 Dolprim


 Dol Lime


 Lmst fw<7


 Lmst fw7>


 Lscongl

 shale, grn

 shale, gry

 Carbon Sh

 shale, red

 Shcol

ACCESSORIES

MINERAL

 Chert, dark

 Nodules

 Pyrite

 Chert White


FOSSIL


 Oolite

 Oomoldic

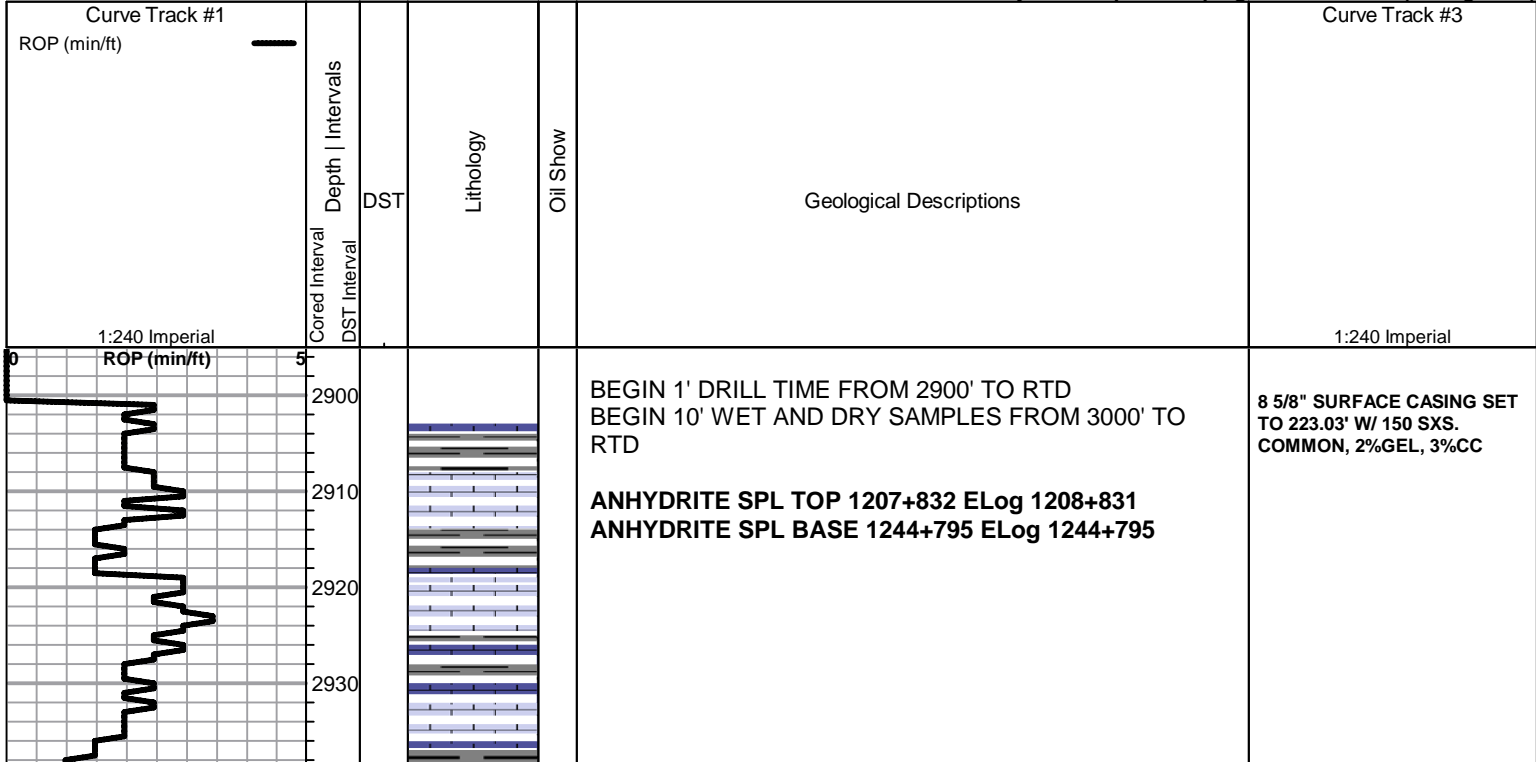
OTHER SYMBOLS

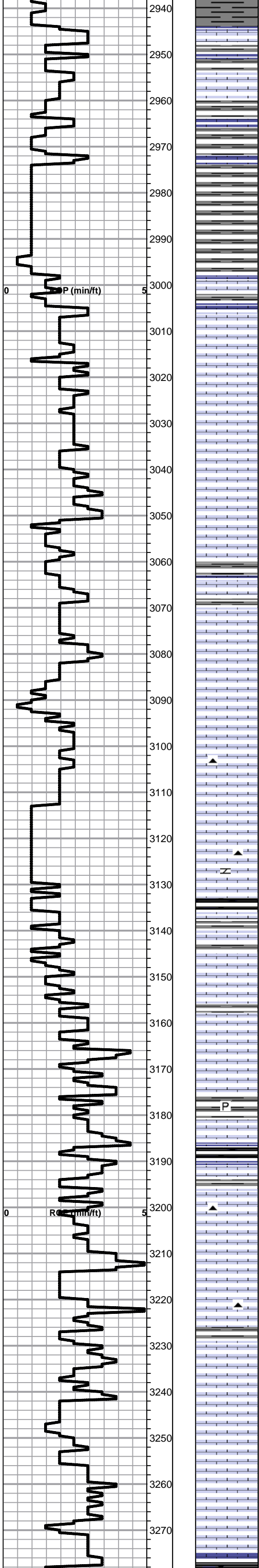
DST

 DST Int

 DST alt

Printed by GEOstrip VC Striplog version 4.0.7.0 (www.grsi.ca)





Lime, med brn-gray, fnxln, slightly fossiliferous
Shalelt-med gray, argillaceous forming sticky clumps

Lime, lt-med brn, fnxln, fossiliferous

Shale, lt-med gray, soft blocky to forming soft mud

TOPEKA 2997-958 ELog 3006

Lime, crm-lt brn, fnxln, slightly fossiliferous

Lime, lt-med brn, fnxln, slightly fossiliferous

Lime, med brn-grayish brn, fnxln, fossiliferous

Lime, lt-med brn, fnxln, slightly fossiliferous

Lime, lt-med brn-grayish brn, fnxln, slightly fossiliferous

Lime, lt brn-lt gray, fn-vfxln

Lime, lt brn-lt gray, slightly fossiliferous in part, slight chalk

Lime, tan-gray, fnxln, granular in part

Lime, lt gray, fnxln, slightly fossiliferous, bedded chalk

Lime, med brn-grayish brn,fnxln-granular, fossiliferous in part, bedded chalk in part

Lime, lt-med brn, fnxln

Lime, lt brn-lt gray, fnxln-granular in part, slightly fossiliferous, slight chalk in part, NS

Lime, lt-med brn w gray speckling in part, granular, slightly fossiliferous, scattered chert nodules

Shale, gray-black carbonaceous

Shale, dove gray, soft forming soft mud
Lime, tan-med brn, fnxln-granular with chalk

Lime, tan-lt brn, fnxln-granular with bedded chalk in part

Lime, crm, fn-vfxln

Shale, med gray, soft blocky, pyrite clusters
Lime, tan, fnxln, slightly chalky

Shale, gray-black carbonaceous

Shale, gray, calcareous with fossil fragments

Lime, tan-lt brn, fnxln, slight chalk

Lime-tan-lt brn, fnxln-granular, slight chalk in part

Lime, crm, granular, chalky, NS

Lime, tan-med brn, fnxln, fossiliferous in part

Lime, tan-lt brn, fn-vfxln

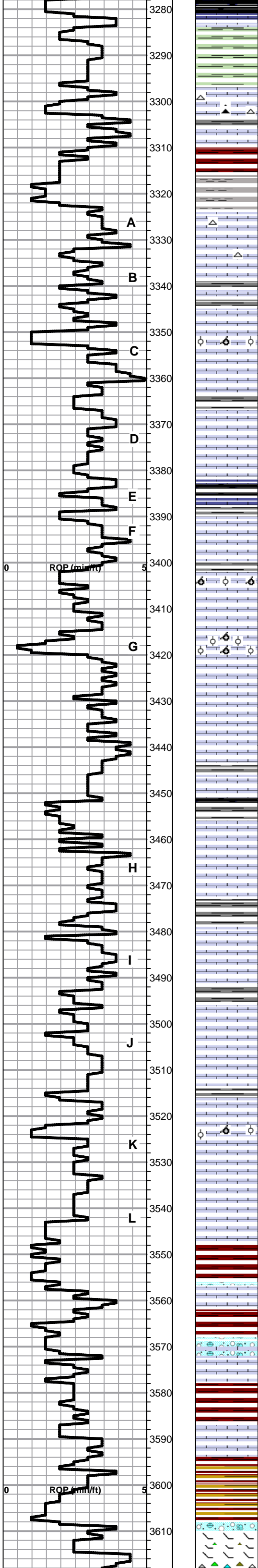
Lime, tan, fnxln-granular, chalk in part

Lime, tan-lt brn, fn-vfxln

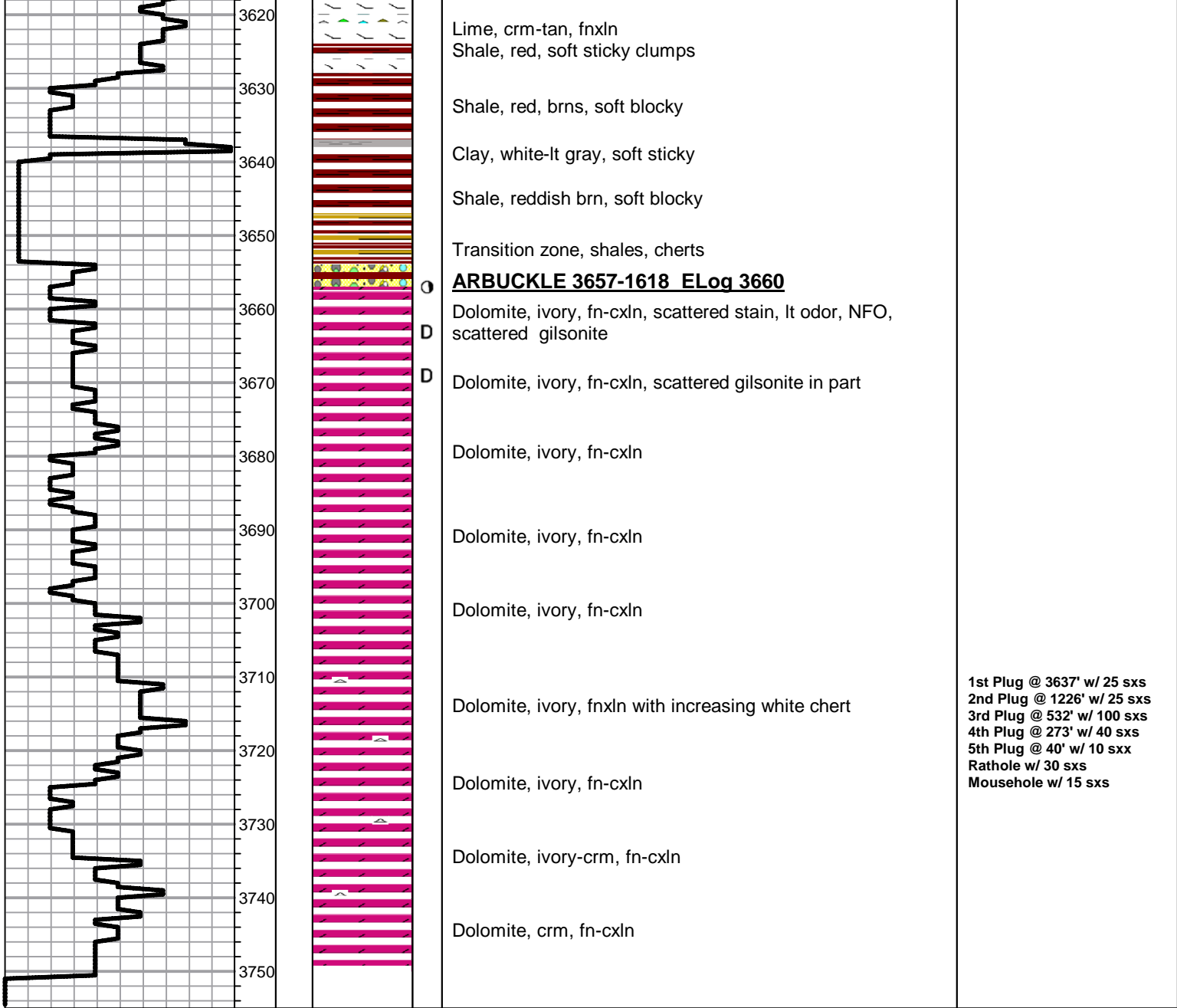
Lime, tan-grayish brn, fnxln

HEEBNER SHALE SPL 3277-1238 ELog 3279

LOG TD 5' DEEPER THAN
RTD. RESULT WAS
SAMPLE TOPS THAT WERE
HIGHER THAN LOG TOPS.



Shale, black carbonaceous Lime, med brn, fnxln Shale, lime green, soft, blocky
<u>TORONTO SPL 3297-1258 ELog 3299</u>
Lime, wht-lt brn, fn-vfxln with white chert
Shale, reddish brn-lt gray
<u>LKC SPL 3323-1284 ELog 3326</u>
Lime, crm-tan, fn-vfxln
Lime,tan-lt brn, fnxln
Lime, tan-lt gray, fnxln Shale, gray-grayish green, soft
● Lime, crm-tan, fnxln with oolitic-oomoldic in part, scattered staining in part, no odor, NFO
Lime, crm-tan, fnxln
Lime, crm-tan, fn-vfxln
Lime, crm-tan, fn-vfrxln Shale, gray-black carbonaceous
● Lime, crm-tan, fnxln, scattered vuggy porosity with lt staining, no odor, NFO
● Lime, crm-tan, fnxln w/ few chips of oolitic-oomoldic with scattered light staining, no odor, NFO
Lime, crm-tan, fnxln, bedded chalk
Lime, crm-tan, oomoldic, NS with chalk in part
Lime, crm-tan, fn-vfrxln, chalk in part
Lime, crm-tan, fnxln, bedded chalk
Lime, crm, fnxln, chalk in part
Lime, crm, fnxln Shale, gray-black carbonaceous in part
Lime, crm-brn, fnxln, NS
Lime, tan-grayish brn, fnxln, chalk in part
Lime, crm-tan, fnxln, bedded chalk, NS
Lime, wht-crm, fnxln, hard on crush, bedded chalk in part Shale, med gray, slivers
Lime, crm-tan, fnxln, bedded chalk, NS
Lime, crm-tan, fn-vfxln, chalk in part
Lime, crm-tan, fnxln, bedded chalk in part
Lime, crm-tan, fnxln with oolmoldic in part, barren, NS
Lime, crm, fn-vfxln, bedded chalk, NS
Lime, crm-tan, fn-vfxln, bed chalk, NS
<u>BKC SPL 3548-1509 ELog 3552</u>
Shale, reddish brn, soft, blocky
Lime, wht-crm, fnxln
Shale, red soft with lt red wash
Clastic mix of limes, chert and red shale
Shale, red, soft sticky mud clumps
Lime, crm, fnxln with bed chalk
Shale, vari color, brns, reds, maroons
<u>MARMATON MKR. SPL 3608-1569 ELog 3611</u>
Lime, crm-lt brn, dolomitic in part, fnxln, orange cherts



QUALITY OILWELL CEMENTING, INC.

Federal Tax I.D.# 20-2886107

Phone 785-483-2025
Cell 785-324-1041

Home Office P.O. Box 32 Russell, KS 67665

No. 739

Date	9-11-12	Sec.	9	Twp.	15	Range	18	County	Ellis	State	KS	On Location		Finish	12:15AM				
Lease	Muhseh	Well No.	#6	Location															
hays mach IN NE Ninto																			
Contractor	Southwind R15 1								Owner										
Type Job	Surface								To Quality Oilwell Cementing, Inc.										
You are hereby requested to rent cementing equipment and furnish cementer and helper to assist owner or contractor to do work as listed.																			
Hole Size	12 1/4								T.D.										
Csg.	8 5/8								Depth										
223.02												Charge To							
Tbg. Size												Depth				Street			
Tool												Depth				City			
																State			
Cement Left in Csg.												Shoe Joint				The above was done to satisfaction and supervision of owner agent or contractor.			
Meas Line												Displace				Cement Amount Ordered			
												12.314				150 390CC 2% gel			
EQUIPMENT																			
Pumptrk	16	No.	Cement	matt															
Bulktrk	10	No.	Driver	Lewis															
Bulktrk	pu	No.	Driver	Jaysen															
JOB SERVICES & REMARKS																			
Remarks:																			
Rat Hole																			
Mouse Hole																			
Centralizers																			
Baskets																			
D/V or Port Collar																			
Cement did Circulate																			
Common																			
Poz. Mix																			
Gel.																			
Calcium																			
Hulls																			
Salt																			
Flowseal																			
Kol-Seal																			
Mud CLR 48																			
CFL-117 or CD110 CAF 38																			
Sand																			
Handling																			
Mileage																			
FLOAT EQUIPMENT																			
Guide Shoe																			
Centralizer																			
Baskets																			
AFU Inserts																			
Float Shoe																			
Latch Down																			
Pumptrk Charge																			
Surface																			
Mileage																			
9																			
Tax																			
Discount																			
Total Charge																			

X Signature *Ray*

Federal Tax I.D.# 20-2886107

No. 6541

Date	9-17-12	Sec.	9	Twp.	1518	Range	Elis	County	KS	State	On Location	Finish	10:45A.m.
Location							HAYS MUCK 1N 12W Ninto						
Lease							Munsch		Well No.		6		
Contractor							Southwest #1		Owner				
Type Job							Rotary Plug		To Quality Oilwell Cementing, Inc. You are hereby requested to rent cementing equipment and furnish cementer and helper to assist owner or contractor to do work as listed.				
Hole Size							7 7/8		T.D.		3250		
Csg.									Depth		Charge To		
Tbg. Size									Depth		Street		
Tool									Depth		City		
Cement Left in Csg.									Shoe Joint		State		
Meas Line									Displace		The above was done to satisfaction and supervision of owner agent or contractor.		
EQUIPMENT							Common						
Pumptrk 16							No.		Cement		147		
Bulktrk							No.		Helper		98		
Bulktrk 10							No.		Driver		9		
JOB SERVICES & REMARKS							Calcium						
Remarks:							Hulls						
Rat Hole							30SK		Flowseal		60#		
Mouse Hole							1.5SK		Koi-Seal				
Centralizers							Mud CLR 48						
Baskets							CFL-117 or CD110 CAF 38						
D/V or Port Collar							Sand						
1st							3637		25SK		Handling		
2nd							1226		25SK		254		
3rd							532		100SK		Mileage		
4th							273		40SK		FLOAT EQUIPMENT		
5th							40'		10SK		Guide Shoe		
							Centralizer						
							Baskets						
							AFU Inserts						
							Float Shoe						
							Latch Down						
							Pumptrk Charge						
							Mileage						
							Tax						
							Discount						
							Total Charge						
Signature							plug						