



**TRILOBITE
TESTING, INC.**

DRILL STEM TEST REPORT

Shakespeare Oil Co.

23-13-31 Logan Co. KS

202 W Main St.
Salem IL
62881
ATTN: Tim Priest

Foster 1-17

Job Ticket: 48993

DST#: 9

Test Start: 2012.08.12 @ 15:25:30

GENERAL INFORMATION:

Formation: **Johnson**

Deviated: No Whipstock: ft (KB)

Time Tool Opened: 16:59:00

Time Test Ended: 20:47:00

Test Type: Conventional Bottom Hole (Reset)

Tester: Mike Roberts

Unit No: 48

Interval: 4322.00 ft (KB) To 4375.00 ft (KB) (TVD)

Reference Elevations: 2783.00 ft (KB)

Total Depth: 4375.00 ft (KB) (TVD)

2773.00 ft (CF)

Hole Diameter: 7.88 inches Hole Condition: Fair

KB to GR/CF: 10.00 ft

Serial #: 8846

Press @ Run Depth: 45.74 psig @ ft (KB)

Capacity: 8000.00 psig

Start Date: 2012.08.12

End Date: 2012.08.12

Last Calib.: 2012.08.12

Start Time: 15:25:30

End Time: 20:47:00

Time On Btm: 2012.08.12 @ 16:58:30

Time Off Btm: 2012.08.12 @ 19:03:00

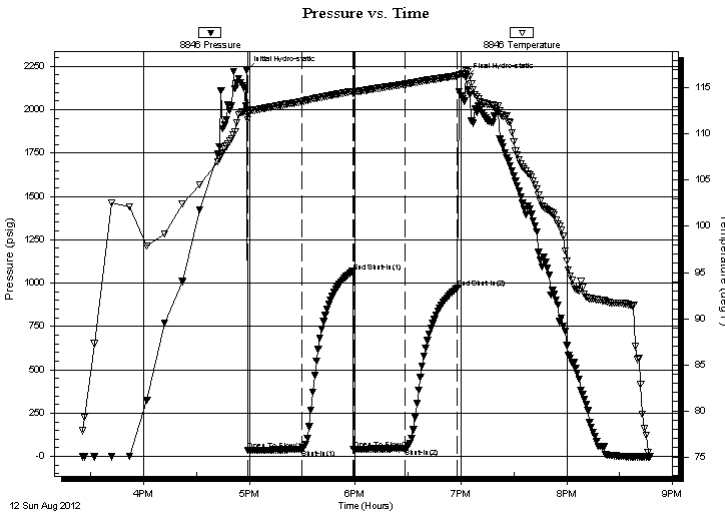
TEST COMMENT: IF: Built to weak surface blow and died in 5 min.

IS: No return blow

FF: No blow

FS: No return blow

PRESSURE SUMMARY



Time (Min.)	Pressure (psig)	Temp (deg F)	Annotation
0	2226.31	112.59	Initial Hydro-static
1	34.30	111.59	Open To Flow (1)
31	39.25	113.52	Shut-In(1)
60	1066.52	114.63	End Shut-In(1)
61	41.91	114.45	Open To Flow (2)
90	45.74	115.41	Shut-In(2)
120	972.30	116.31	End Shut-In(2)
125	2184.09	116.90	Final Hydro-static

Recovery

Length (ft)	Description	Volume (bbl)
5.00	ocm 4%o 96%m	0.02

Gas Rates

	Choke (inches)	Pressure (psig)	Gas Rate (Mcf/d)

* Recovery from multiple tests



**TRILOBITE
TESTING, INC.**

DRILL STEM TEST REPORT

FLUID SUMMARY

Shakespeare Oil Co.
202 W Main St.
Salem IL
62881
ATTN: Tim Priest

23-13-31 Logan Co. KS

Foster 1-17

Job Ticket: 48993

DST#: 9

Test Start: 2012.08.12 @ 15:25:30

Mud and Cushion Information

Mud Type: Gel Chem	Cushion Type:	Oil API:	0 deg API
Mud Weight: 9.00 lb/gal	Cushion Length: ft	Water Salinity:	0 ppm
Viscosity: 59.00 sec/qt	Cushion Volume: bbl		
Water Loss: 10.37 in ³	Gas Cushion Type:		
Resistivity: 0.00 ohm.m	Gas Cushion Pressure: psig		
Salinity: 8500.00 ppm			
Filter Cake: 2.00 inches			

Recovery Information

Recovery Table

Length ft	Description	Volume bbl
5.00	ocm 4%o 96%m	0.025

Total Length: 5.00 ft Total Volume: 0.025 bbl

Num Fluid Samples: 0

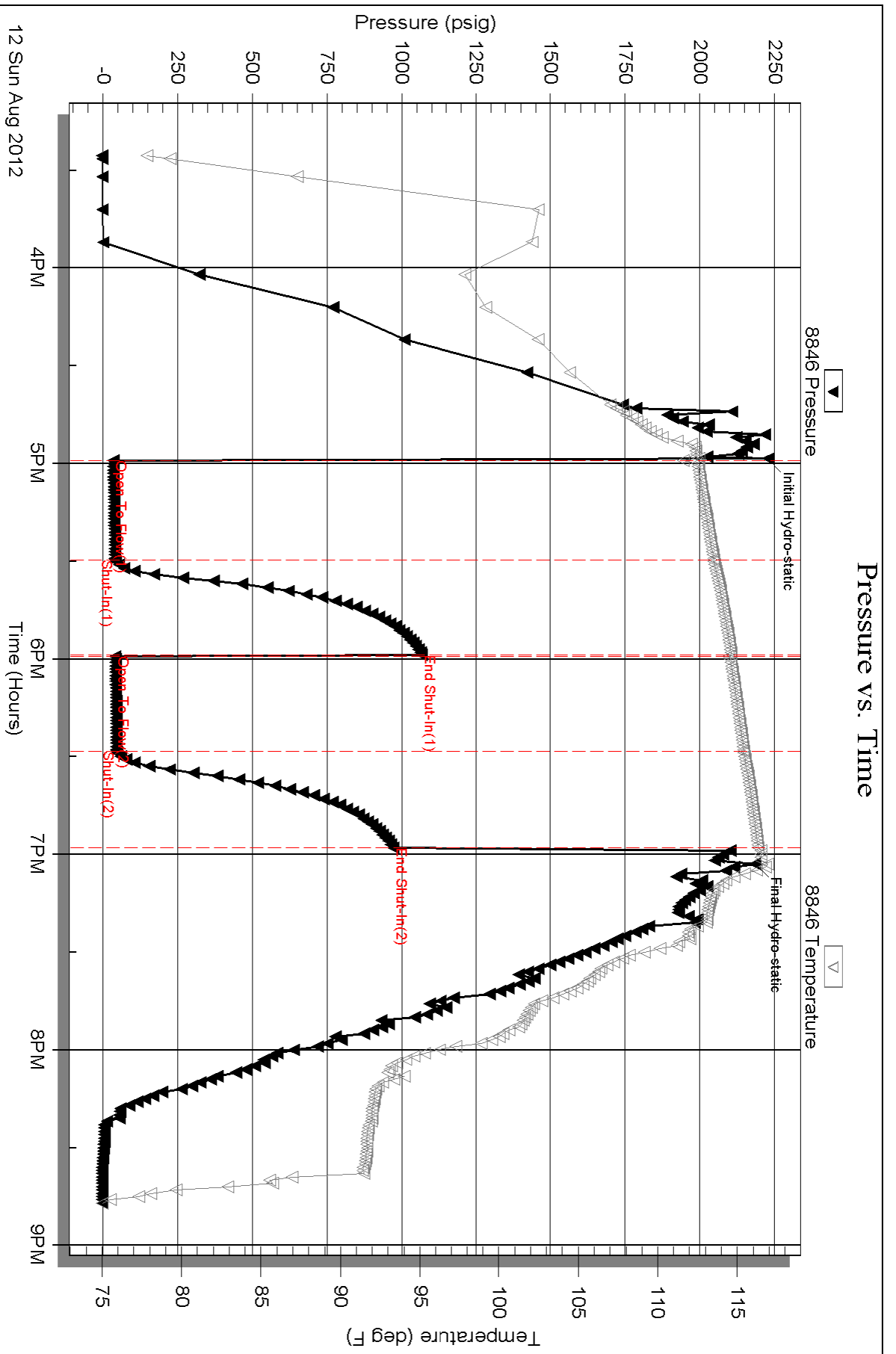
Num Gas Bombs: 0

Serial #:

Laboratory Name:

Laboratory Location:

Recovery Comments:



Serial #: 8844

Outside Shakespeare Oil Co.

Foster 1-17

DST Test Number: 9

