



Sonic Cement
Bond Log

15-007-23651-00-00

API No.

Company Woolsey Operating Company

Well Myers # 1

Field Hardiner

County Barber State Kansas

Location 950 FNL & 1130 FEL N.W.-S.W.-N.E. Other Services Fast Trailer

Sec: 14 Twp: 35S Rge: 13W

Permanant Datum Ground Level Elevation 1453
Log Measured From Kelly Bushing 9 Ft. Above Perm. Datum
Drilling Measured From Kelly Bushing

Run Number One
Date Survey 3/2/2011
Date Cementing 3/18/2011
Type Cementing Operation Primary

Depth Driller 5700
Depth Logger 5206

Logged Interval 5205 to 3550

Casing Driller 5.5 TD @

Float Collar - D.V. Tool

Squeeze Depth

Amount & Type Cement

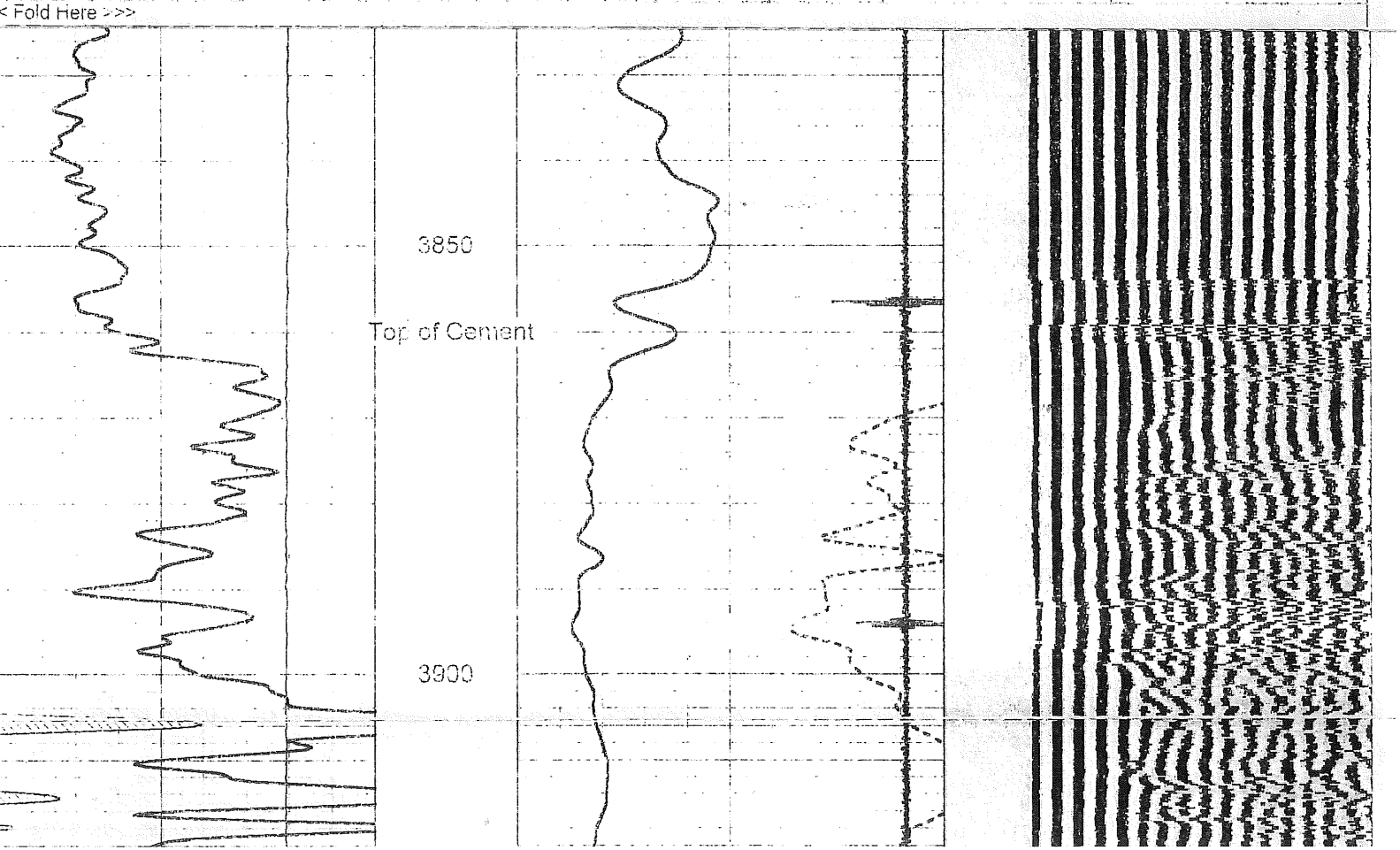
Type Fluid In Hole Water

Fluid Level Full

Salinity PPM Cl

Weight Ir/gal - Vis.

Approx. Logged Cement Top 3850
Calculated Cement Top 3850
Max. Hole Temperature
Tool No. RBT05
Spacing Recorded 3-5
Equipment - Location 5 Prt



>>> Fold Here <<<