



**TRILOBITE
TESTING, INC**

DRILL STEM TEST REPORT

Shakespeare Oil Co., Inc.

S8-14s-32w Logan, KS

202 W Main St.
Salem, IL 62881

Ottley #1-8

Job Ticket: 50069

DST#: 2

ATTN: Tim Priest

Test Start: 2012.09.09 @ 20:45:00

GENERAL INFORMATION:

Formation: **LKC 'C-D'**
 Deviated: No Whipstock: ft (KB)
 Time Tool Opened: 22:17:06
 Time Test Ended: 03:49:00
 Interval: **3899.00 ft (KB) To 3940.00 ft (KB) (TVD)**
 Total Depth: 3940.00 ft (KB) (TVD)
 Hole Diameter: 7.88 inches Hole Condition: Good
 Test Type: Conventional Bottom Hole (Reset)
 Tester: Chuck Smith
 Unit No: 62
 Reference Elevations: 2842.00 ft (KB)
 2832.00 ft (CF)
 KB to GR/CF: 10.00 ft

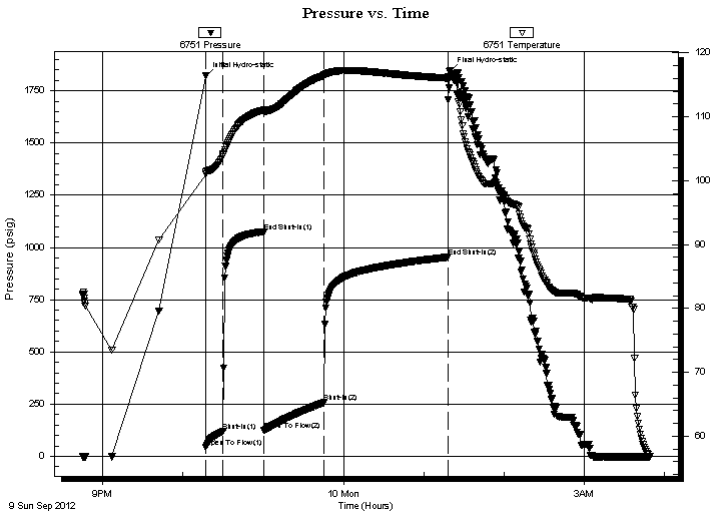
Serial #: 6751

Outside

Press @ Run Depth: 257.25 psig @ 3901.00 ft (KB)
 Start Date: 2012.09.09 End Date: 2012.09.10
 Start Time: 20:45:02 End Time: 03:49:00
 Capacity: 8000.00 psig
 Last Calib.: 2012.09.10
 Time On Btm: 2012.09.09 @ 22:17:00
 Time Off Btm: 2012.09.10 @ 01:19:24

TEST COMMENT: B.O.B. @ 11 min.
 No return.
 B.O.B. @ 15 min.
 No return.

PRESSURE SUMMARY



Time (Min.)	Pressure (psig)	Temp (deg F)	Annotation
0	1819.58	101.01	Initial Hydro-static
1	44.44	101.38	Open To Flow (1)
14	121.10	103.99	Shut-In(1)
44	1075.73	111.03	End Shut-In(1)
44	124.00	110.72	Open To Flow (2)
89	257.25	116.48	Shut-In(2)
182	953.85	116.05	End Shut-In(2)
183	1842.91	116.22	Final Hydro-static

Recovery

Length (ft)	Description	Volume (bbl)
0.00	RW: .240 @ 54 Degrees F = 50000 PPM	0.00
360.00	MW 5m 95w	3.67
120.00	OSMW 25m 75w	1.68
55.00	OSWM 40w 60m	0.77
5.00	GO 3g 97o	0.07

* Recovery from multiple tests

Gas Rates

Choke (inches)	Pressure (psig)	Gas Rate (Mcf/d)



TRILOBITE
TESTING, INC

DRILL STEM TEST REPORT

FLUID SUMMARY

Shakespeare Oil Co., Inc.

S8-14s-32w Logan, KS

202 W Main St.
Salem, IL 62881

Ottley #1-8

Job Ticket: 50069

DST#: 2

ATTN: Tim Priest

Test Start: 2012.09.09 @ 20:45:00

Mud and Cushion Information

Mud Type: Gel Chem

Cushion Type:

Oil API:

25 deg API

Mud Weight: 9.00 lb/gal

Cushion Length:

ft

Water Salinity:

50000 ppm

Viscosity: 58.00 sec/qt

Cushion Volume:

bbbl

Water Loss: 7.19 in³

Gas Cushion Type:

Resistivity: ohm.m

Gas Cushion Pressure:

psig

Salinity: 4000.00 ppm

Filter Cake: 1.00 inches

Recovery Information

Recovery Table

Length ft	Description	Volume bbbl
0.00	RW:.240 @ 54 Degrees F = 50000 PPM	0.000
360.00	MW 5m 95w	3.665
120.00	OSMW 25m 75w	1.683
55.00	OSWM 40w 60m	0.772
5.00	GO 3g 97o	0.070

Total Length: 540.00 ft Total Volume: 6.190 bbl

Num Fluid Samples: 0

Num Gas Bombs: 0

Serial #:

Laboratory Name:

Laboratory Location:

Recovery Comments: API: 26 @ 70 Degrees F = 25.

