



TRILOBITE TESTING, INC

DRILL STEM TEST REPORT

Shakespeare Oil Co., Inc.

S8-14s-32w Logan, KS

202 W Main St.
Salem, IL 62881

Ottley #1-8

Job Ticket: 50070

DST#: 3

ATTN: Tim Priest

Test Start: 2012.09.10 @ 12:50:00

GENERAL INFORMATION:

Formation: **LKC 'E-F'**

Deviated: No Whipstock: ft (KB)

Time Tool Opened: 14:12:00

Time Test Ended: 18:21:30

Test Type: Conventional Bottom Hole (Reset)

Tester: Chuck Smith

Unit No: 62

Interval: 3937.00 ft (KB) To 3963.00 ft (KB) (TVD)

Reference Elevations: 2842.00 ft (KB)

Total Depth: 3963.00 ft (KB) (TVD)

2832.00 ft (CF)

Hole Diameter: 7.88 inches Hole Condition: Good

KB to GR/CF: 10.00 ft

Serial #: 8018

Inside

Press @ Run Depth: 216.30 psig @ 3939.00 ft (KB)

Capacity: 8000.00 psig

Start Date: 2012.09.10

End Date: 2012.09.10

Last Calib.: 2012.09.10

Start Time: 12:50:01

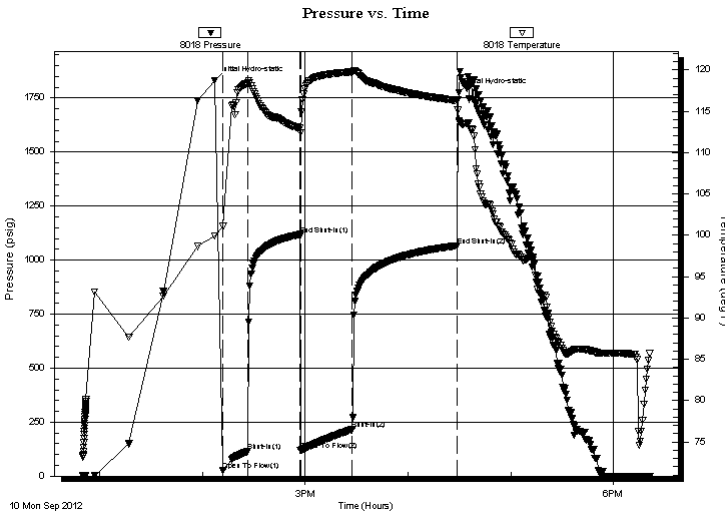
End Time: 18:21:30

Time On Btm: 2012.09.10 @ 14:07:00

Time Off Btm: 2012.09.10 @ 16:29:50

TEST COMMENT: B.O.B. @ 13 min.
No return.
B.O.B. @ 17 min.
No return.

PRESSURE SUMMARY



| Time (Min.) | Pressure (psig) | Temp (deg F) | Annotation |
|-------------|-----------------|--------------|----------------------|
| 0 | 1831.61 | 99.90 | Initial Hydro-static |
| 5 | 25.61 | 101.06 | Open To Flow (1) |
| 20 | 116.22 | 118.43 | Shut-In(1) |
| 50 | 1118.91 | 112.96 | End Shut-In(1) |
| 51 | 119.46 | 112.44 | Open To Flow (2) |
| 81 | 216.30 | 119.76 | Shut-In(2) |
| 142 | 1066.79 | 116.30 | End Shut-In(2) |
| 143 | 1774.46 | 113.75 | Final Hydro-static |

Recovery

| Length (ft) | Description | Volume (bbl) |
|-------------|------------------------------------|--------------|
| 0.00 | RW:.078 @ 85 Degrees F = 80000 PPM | 0.00 |
| 360.00 | MW 3m 97w | 3.67 |
| 90.00 | OSMW 45m 65w | 1.26 |
| | | |
| | | |

Gas Rates

| | Choke (inches) | Pressure (psig) | Gas Rate (Mcf/d) |
|--|----------------|-----------------|------------------|
| | | | |

* Recovery from multiple tests



TRILOBITE
TESTING, INC

DRILL STEM TEST REPORT

FLUID SUMMARY

Shakespeare Oil Co., Inc.

S8-14s-32w Logan, KS

202 W Main St.
Salem, IL 62881

Ottley #1-8

Job Ticket: 50070

DST#: 3

ATTN: Tim Priest

Test Start: 2012.09.10 @ 12:50:00

Mud and Cushion Information

Mud Type: Gel Chem

Cushion Type:

Oil API:

deg API

Mud Weight: 9.00 lb/gal

Cushion Length:

ft

Water Salinity:

80000 ppm

Viscosity: 56.00 sec/qt

Cushion Volume:

bbbl

Water Loss: 7.99 in³

Gas Cushion Type:

Resistivity: ohm.m

Gas Cushion Pressure:

psig

Salinity: 4400.00 ppm

Filter Cake: 1.00 inches

Recovery Information

Recovery Table

| Length ft | Description | Volume bbl |
|--------------|------------------------------------|---------------|
| 0.00 | RW:.078 @ 85 Degrees F = 80000 PPM | 0.000 |
| 360.00 | MW 3m 97w | 3.665 |
| 90.00 | OSMW 45m 65w | 1.262 |

Total Length: 450.00 ft Total Volume: 4.927 bbl

Num Fluid Samples: 0

Num Gas Bombs: 0

Serial #:

Laboratory Name:

Laboratory Location:

Recovery Comments:

Serial #: 8018

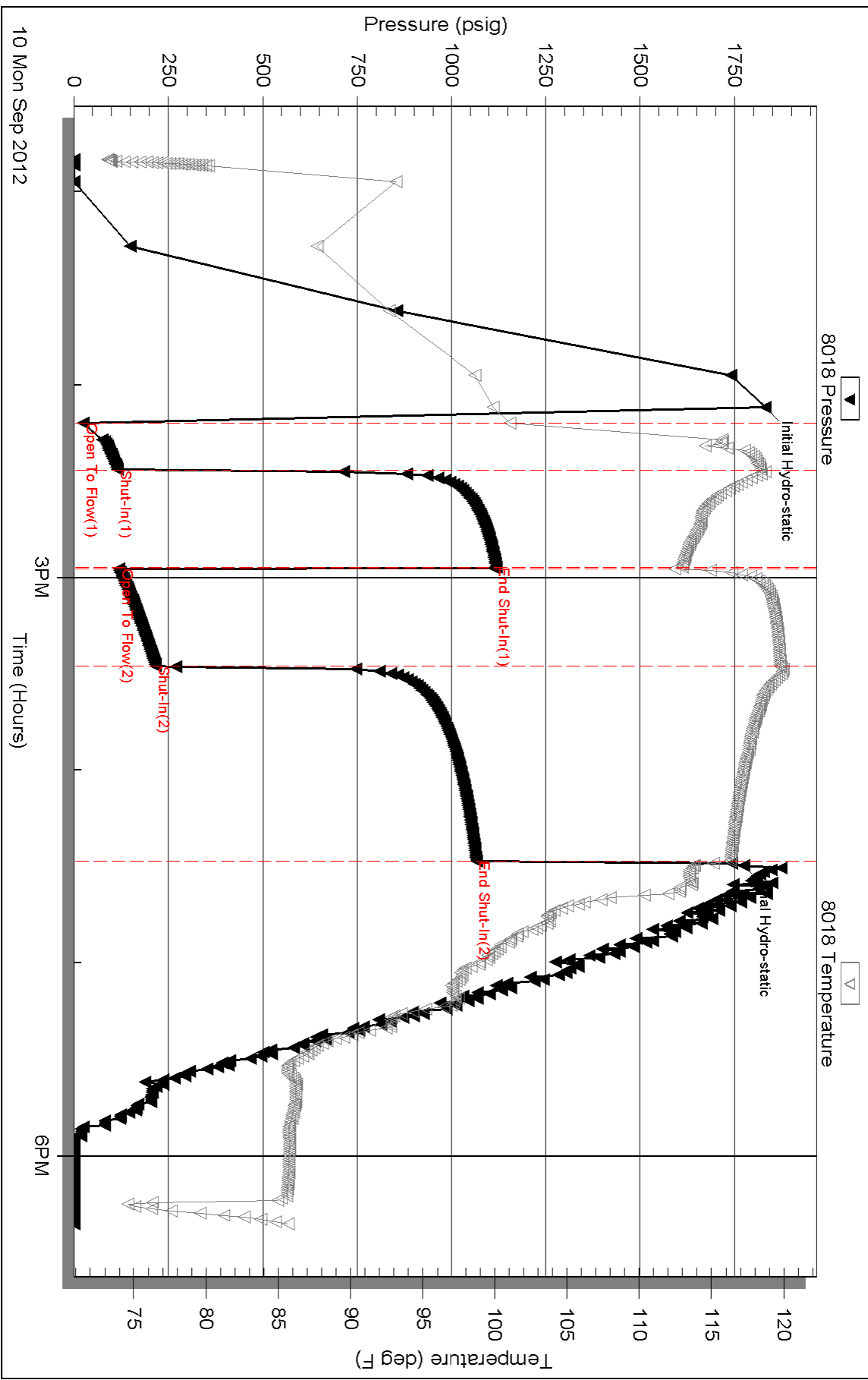
Inside

Shakespeare Oil Co., Inc.

Oilley #1-8

DST Test Number: 3

Pressure vs. Time



Triobite Testing, Inc

Ref. No: 50070

Printed: 2012.09.11 @ 00:23:01