



**TRILOBITE
TESTING, INC.**

DRILL STEM TEST REPORT

Shakespeare Oil Co., Inc.

S8-14s-32wLogan, KS

202 W Main St.
Salem, IL 62881

Ottley #1-8

Job Ticket: 50071

DST#: 4

ATTN: Tim Priest

Test Start: 2012.09.11 @ 07:22:00

GENERAL INFORMATION:

Formation: **LKC 'H-I'**

Deviated: No Whipstock: ft (KB)

Time Tool Opened: 08:56:00

Time Test Ended: 13:21:09

Test Type: Conventional Bottom Hole (Reset)

Tester: Chuck Smith

Unit No: 62

Interval: 4012.00 ft (KB) To 4072.00 ft (KB) (TVD)

Reference Elevations: 2842.00 ft (KB)

Total Depth: 4072.00 ft (KB) (TVD)

2832.00 ft (CF)

Hole Diameter: 7.88 inches Hole Condition: Good

KB to GR/CF: 10.00 ft

Serial #: 8018

Inside

Press @ Run Depth: 49.24 psig @ 4015.00 ft (KB)

Capacity: 8000.00 psig

Start Date: 2012.09.11

End Date: 2012.09.11

Last Calib.: 2012.09.11

Start Time: 07:22:01

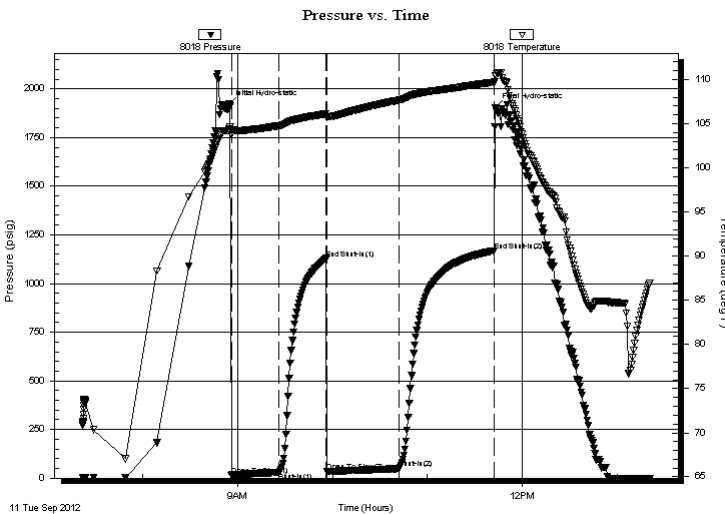
End Time: 13:21:10

Time On Btm: 2012.09.11 @ 08:54:30

Time Off Btm: 2012.09.11 @ 11:43:09

TEST COMMENT: 1" Blow .
No return.
1" Blow .
No return.

PRESSURE SUMMARY



Time (Min.)	Pressure (psig)	Temp (deg F)	Annotation
0	1920.88	104.35	Initial Hydro-static
2	15.89	103.73	Open To Flow (1)
32	29.22	104.77	Shut-In(1)
62	1128.48	106.14	End Shut-In(1)
62	33.07	105.66	Open To Flow (2)
108	49.24	107.66	Shut-In(2)
168	1168.22	109.70	End Shut-In(2)
169	1902.77	110.38	Final Hydro-static

Recovery

Length (ft)	Description	Volume (bbl)
75.00	SOCM 1 to 99m	0.37
1.00	O 100o	0.00

* Recovery from multiple tests

Gas Rates

Choke (inches)	Pressure (psig)	Gas Rate (Mcf/d)



**TRILOBITE
TESTING, INC.**

DRILL STEM TEST REPORT

FLUID SUMMARY

Shakespeare Oil Co., Inc.

S8-14s-32wLogan, KS

202 W Main St.
Salem, IL 62881

Ottley #1-8

Job Ticket: 50071

DST#: 4

ATTN: Tim Priest

Test Start: 2012.09.11 @ 07:22:00

Mud and Cushion Information

Mud Type: Gel Chem

Cushion Type:

Oil API:

deg API

Mud Weight: 9.00 lb/gal

Cushion Length:

ft

Water Salinity:

ppm

Viscosity: 49.00 sec/qt

Cushion Volume:

bbbl

Water Loss: 8.79 in³

Gas Cushion Type:

Resistivity: ohm.m

Gas Cushion Pressure:

psig

Salinity: 5000.00 ppm

Filter Cake: 1.00 inches

Recovery Information

Recovery Table

Length ft	Description	Volume bbl
75.00	SOCM 1o 99m	0.369
1.00	O 100o	0.005

Total Length: 76.00 ft Total Volume: 0.374 bbl

Num Fluid Samples: 0

Num Gas Bombs: 0

Serial #:

Laboratory Name:

Laboratory Location:

Recovery Comments:

