



**TRILOBITE TESTING, INC.**

# DRILL STEM TEST REPORT

Shakespeare Oil Co., Inc.

**S8-14s-32w Logan, KS**

202 W Main St.  
Salem, IL 62881

**Ottley #1-8**

Job Ticket: 50072

**DST#: 5**

ATTN: Tim Priest

Test Start: 2012.09.11 @ 23:43:00

## GENERAL INFORMATION:

Formation: **LKC 'K'**  
 Deviated: No Whipstock: ft (KB)  
 Time Tool Opened: 01:31:30  
 Time Test Ended: 06:35:20  
 Interval: **4096.00 ft (KB) To 4135.00 ft (KB) (TVD)**  
 Total Depth: 4135.00 ft (KB) (TVD)  
 Hole Diameter: 7.88 inches Hole Condition: Good  
 Test Type: Conventional Bottom Hole (Reset)  
 Tester: Chuck Smith  
 Unit No: 62  
 Reference Elevations: 2842.00 ft (KB)  
 2832.00 ft (CF)  
 KB to GR/CF: 10.00 ft

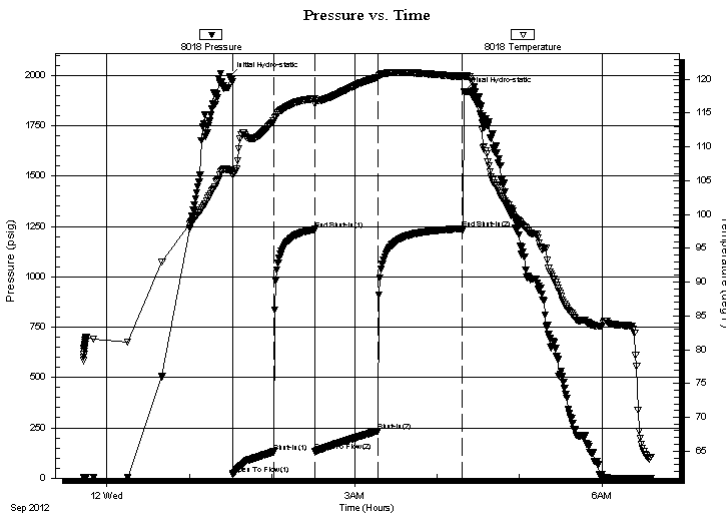
## Serial #: 8018

Inside

Press @ Run Depth: 234.16 psig @ 4098.00 ft (KB)  
 Start Date: 2012.09.11 End Date: 2012.09.12  
 Start Time: 23:43:01 End Time: 06:35:20  
 Capacity: 8000.00 psig  
 Last Calib.: 2012.09.12  
 Time On Btm: 2012.09.12 @ 01:29:20  
 Time Off Btm: 2012.09.12 @ 04:19:30

TEST COMMENT: B.O.B. @ 22 min.  
 No return.  
 B.O.B. @ 25 min.  
 No return.

## PRESSURE SUMMARY



Time (Min.)	Pressure (psig)	Temp (deg F)	Annotation
0	1992.87	106.53	Initial Hydro-static
3	19.94	105.84	Open To Flow (1)
32	130.54	113.84	Shut-In(1)
62	1235.34	117.14	End Shut-In(1)
62	132.13	116.43	Open To Flow (2)
108	234.16	120.26	Shut-In(2)
169	1239.17	120.38	End Shut-In(2)
171	1919.39	120.46	Final Hydro-static

## Recovery

Length (ft)	Description	Volume (bbl)
365.00	MW 5m 95w	3.74
60.00	MW 20m 80w	0.84
55.00	MW 50m 50w	0.77

## Gas Rates

Choke (inches)	Pressure (psig)	Gas Rate (Mcf/d)

\* Recovery from multiple tests



**TRILOBITE  
TESTING, INC.**

# DRILL STEM TEST REPORT

**FLUID SUMMARY**

Shakespeare Oil Co., Inc.

**S8-14s-32w Logan, KS**

202 W Main St.  
Salem, IL 62881

**Ottley #1-8**

Job Ticket: 50072

**DST#: 5**

ATTN: Tim Priest

Test Start: 2012.09.11 @ 23:43:00

## Mud and Cushion Information

Mud Type: Gel Chem

Cushion Type:

Oil API:

deg API

Mud Weight: 9.00 lb/gal

Cushion Length:

ft

Water Salinity:

78000 ppm

Viscosity: 54.00 sec/qt

Cushion Volume:

bbbl

Water Loss: 8.79 in<sup>3</sup>

Gas Cushion Type:

Resistivity: ohm.m

Gas Cushion Pressure:

psig

Salinity: 5000.00 ppm

Filter Cake: 1.00 inches

## Recovery Information

Recovery Table

Length ft	Description	Volume bbbl
365.00	MW 5m 95w	3.735
60.00	MW 20m 80w	0.842
55.00	MW 50m 50w	0.772

Total Length: 480.00 ft      Total Volume: 5.349 bbl

Num Fluid Samples: 0

Num Gas Bombs: 0

Serial #:

Laboratory Name:

Laboratory Location:

Recovery Comments: RW:.110 @ 64 Degrees F = 78000 PPM

