



TRILOBITE TESTING, INC.

DRILL STEM TEST REPORT

Shakespeare Oil Co., Inc.

S8-14s-32w Logan, KS

202 W Main St.
Salem, IL 62881

Ottley #1-8

Job Ticket: 50073

DST#: 6

ATTN: Tim Priest

Test Start: 2012.09.12 @ 13:16:00

GENERAL INFORMATION:

Formation: **LKC 'L'**

Deviated: No Whipstock: ft (KB)

Time Tool Opened: 14:51:40

Time Test Ended: 20:17:39

Test Type: Conventional Bottom Hole (Reset)

Tester: Chuck Smith

Unit No: 62

Interval: 4134.00 ft (KB) To 4160.00 ft (KB) (TVD)

Reference Elevations: 2842.00 ft (KB)

Total Depth: 4160.00 ft (KB) (TVD)

2832.00 ft (CF)

Hole Diameter: 7.88 inches Hole Condition: Good

KB to GR/CF: 10.00 ft

Serial #: 8018

Inside

Press @ Run Depth: 1044.54 psig @ 4136.00 ft (KB)

Capacity: 8000.00 psig

Start Date: 2012.09.12

End Date:

2012.09.12

Last Calib.:

2012.09.12

Start Time: 13:16:01

End Time:

20:17:40

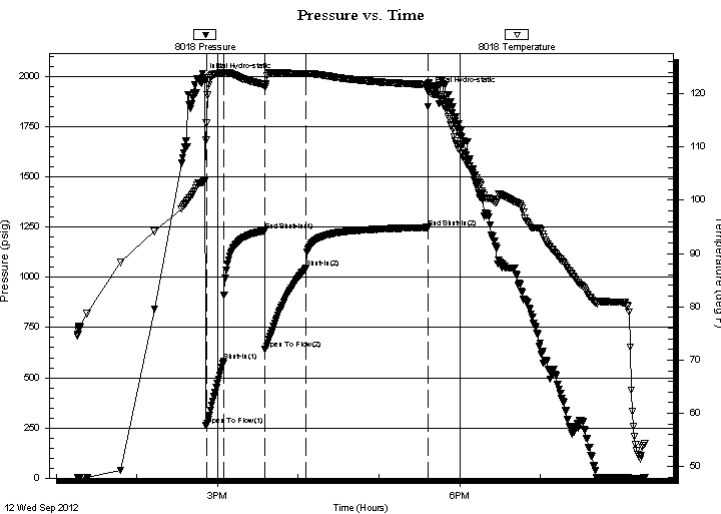
Time On Btm:

2012.09.12 @ 14:49:10

Time Off Btm:

2012.09.12 @ 17:36:39

TEST COMMENT: B.O.B. @ 1 min.
Weak surface return died @ 20 min.
B.O.B. @ 1 1/4 min.
No return.



PRESSURE SUMMARY

Time (Min.)	Pressure (psig)	Temp (deg F)	Annotation
0	1993.95	103.36	Initial Hydro-static
3	264.59	114.49	Open To Flow (1)
16	582.41	123.85	Shut-In(1)
46	1230.98	121.67	End Shut-In(1)
47	642.48	121.24	Open To Flow (2)
77	1044.54	123.70	Shut-In(2)
167	1248.09	121.71	End Shut-In(2)
168	1922.95	121.83	Final Hydro-static

Recovery

Length (ft)	Description	Volume (bbl)
2040.00	GW 5g 95w	27.23
120.00	MW 50m 50w	1.68
60.00	OSWM 25w 75m	0.84

* Recovery from multiple tests

Gas Rates

	Choke (inches)	Pressure (psig)	Gas Rate (Mcf/d)



**TRILOBITE
TESTING, INC.**

DRILL STEM TEST REPORT

FLUID SUMMARY

Shakespeare Oil Co., Inc.

S8-14s-32w Logan, KS

202 W Main St.
Salem, IL 62881

Ottley #1-8

Job Ticket: 50073

DST#: 6

ATTN: Tim Priest

Test Start: 2012.09.12 @ 13:16:00

Mud and Cushion Information

Mud Type: Gel Chem

Cushion Type:

Oil API:

deg API

Mud Weight: 9.00 lb/gal

Cushion Length:

ft

Water Salinity:

100000 ppm

Viscosity: 58.00 sec/qt

Cushion Volume:

bbbl

Water Loss: 10.39 in³

Gas Cushion Type:

Resistivity: ohm.m

Gas Cushion Pressure:

psig

Salinity: 6000.00 ppm

Filter Cake: 2.00 inches

Recovery Information

Recovery Table

Length ft	Description	Volume bbl
2040.00	GW 5g 95w	27.231
120.00	MW 50m 50w	1.683
60.00	OSWM 25w 75m	0.842

Total Length: 2220.00 ft Total Volume: 29.756 bbl

Num Fluid Samples: 0

Num Gas Bombs: 0

Serial #:

Laboratory Name:

Laboratory Location:

Recovery Comments: RW:.105 @ 53 Degrees F = 100000 PPM

