



**TRILOBITE
TESTING, INC.**

DRILL STEM TEST REPORT

Shakespeare Oil Co., Inc.

S8-14s-32w Logan, KS

202 W Main St.
Salem, IL 62881

Ottley #1-8

Job Ticket: 50075

DST#: 8

ATTN: Tim Priest

Test Start: 2012.09.14 @ 23:01:00

GENERAL INFORMATION:

Formation: **Morrow**

Deviated: No Whipstock: ft (KB)

Time Tool Opened: 02:07:40

Time Test Ended: 07:07:30

Test Type: Conventional Bottom Hole (Reset)

Tester: Chuck Smith

Unit No: 62

Interval: 4465.00 ft (KB) To 4510.00 ft (KB) (TVD)

Reference Elevations: 2842.00 ft (KB)

Total Depth: 4510.00 ft (KB) (TVD)

2832.00 ft (CF)

Hole Diameter: 7.88 inches Hole Condition: Good

KB to GR/CF: 10.00 ft

Serial #: 8018

Inside

Press @ Run Depth: 261.16 psig @ 4468.00 ft (KB)

Capacity: 8000.00 psig

Start Date: 2012.09.14

End Date:

2012.09.15

Last Calib.: 2012.09.15

Start Time: 23:01:01

End Time:

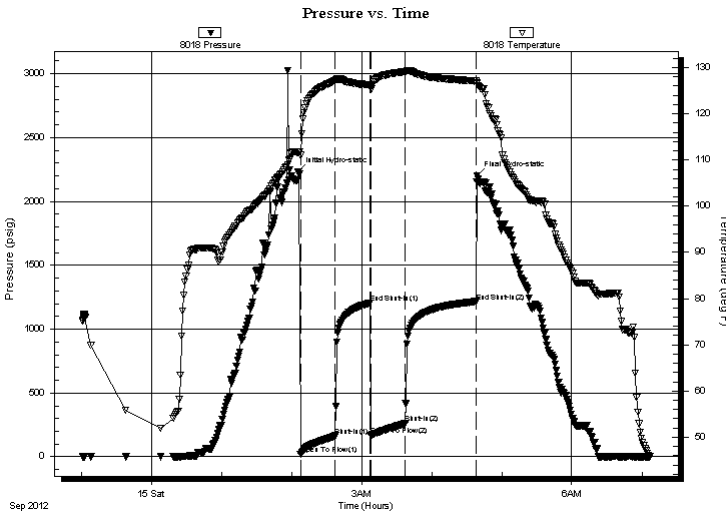
07:07:30

Time On Btm: 2012.09.15 @ 02:05:40

Time Off Btm: 2012.09.15 @ 04:39:00

TEST COMMENT: B.O.B. @ 13 min.
No return.
B.O.B. @ 17 min.
No return.

PRESSURE SUMMARY



Time (Min.)	Pressure (psig)	Temp (deg F)	Annotation
0	2233.34	111.67	Initial Hydro-static
2	22.22	111.00	Open To Flow (1)
32	163.40	127.20	Shut-In(1)
62	1204.52	126.21	End Shut-In(1)
62	168.08	125.67	Open To Flow (2)
92	261.16	129.10	Shut-In(2)
153	1215.96	127.09	End Shut-In(2)
154	2198.49	126.46	Final Hydro-static

Recovery

Length (ft)	Description	Volume (bbl)
480.00	MW 5m 95w	5.35
50.00	MW 30m 70w	0.70
0.00	RW .133 @ 40 Degrees F = 102000 PPM	0.00

* Recovery from multiple tests

Gas Rates

Choke (inches)	Pressure (psig)	Gas Rate (Mcf/d)



**TRILOBITE
TESTING, INC.**

DRILL STEM TEST REPORT

FLUID SUMMARY

Shakespeare Oil Co., Inc.

S8-14s-32w Logan, KS

202 W Main St.
Salem, IL 62881

Ottley #1-8

Job Ticket: 50075

DST#: 8

ATTN: Tim Priest

Test Start: 2012.09.14 @ 23:01:00

Mud and Cushion Information

Mud Type: Gel Chem

Cushion Type:

Oil API:

deg API

Mud Weight: 9.00 lb/gal

Cushion Length:

ft

Water Salinity: 102000 ppm

Viscosity: 56.00 sec/qt

Cushion Volume:

bbbl

Water Loss: 9.59 in³

Gas Cushion Type:

Resistivity: ohm.m

Gas Cushion Pressure:

psig

Salinity: 5500.00 ppm

Filter Cake: 1.00 inches

Recovery Information

Recovery Table

Length ft	Description	Volume bbl
480.00	MW 5m 95w	5.348
50.00	MW 30m 70w	0.701
0.00	RW .133 @ 40 Degrees F = 102000 PPM	0.000

Total Length: 530.00 ft

Total Volume: 6.049 bbl

Num Fluid Samples: 0

Num Gas Bombs: 0

Serial #:

Laboratory Name:

Laboratory Location:

Recovery Comments:

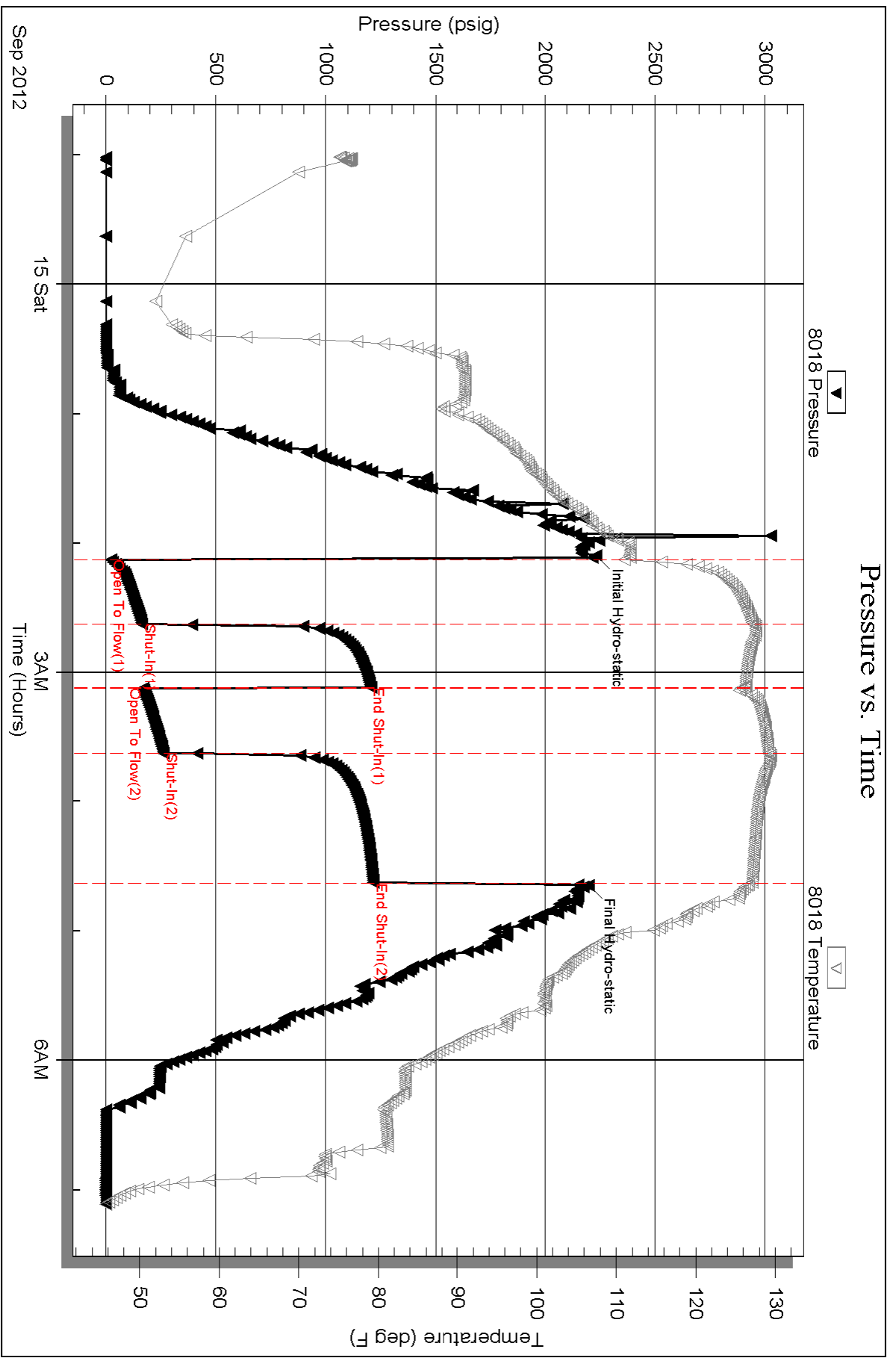
Serial #: 8018

Inside

Shakespeare Oil Co., Inc.

Oilley #1-8

DST Test Number: 8



Serial #: 6751

Outside Shakespeare Oil Co., Inc.

Oilley #1-8

DST Test Number: 8

