



**TRILOBITE
TESTING, INC.**

DRILL STEM TEST REPORT

Shakespeare Oil Co. Inc

8-13s-32w Logan Co. KS

202 W. Main St.
Salem IL 62881

Peterson # 2-8

Job Ticket: 48845

DST#: 3

ATTN: Steve Davis

Test Start: 2012.09.18 @ 21:28:00

GENERAL INFORMATION:

Formation: **LKC "H-1"**

Deviated: No Whipstock: ft (KB)

Time Tool Opened: 23:18:25

Time Test Ended: 04:45:24

Test Type: Conventional Bottom Hole (Reset)

Tester: Will MacLean

Unit No: 40

Interval: 4102.00 ft (KB) To 4168.00 ft (KB) (TVD)

Reference Elevations: 2981.00 ft (KB)

Total Depth: 4012.00 ft (KB) (TVD)

2971.00 ft (CF)

Hole Diameter: 7.88 inches Hole Condition: Good

KB to GR/CF: 10.00 ft

Serial #: 8360

Inside

Press @ Run Depth: 50.15 psig @ 4103.00 ft (KB)

Capacity: 8000.00 psig

Start Date: 2012.09.18

End Date:

2012.09.19

Last Calib.:

2012.09.19

Start Time:

21:28:00

End Time:

04:45:24

Time On Btm:

2012.09.18 @ 23:18:10

Time Off Btm:

2012.09.19 @ 02:26:54

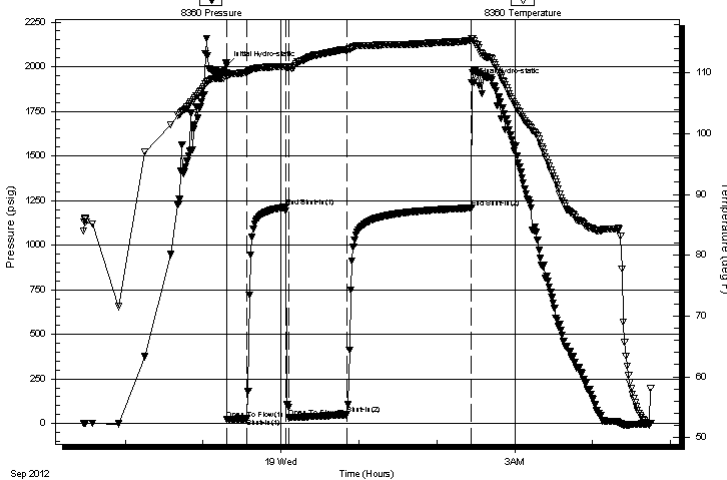
TEST COMMENT: IF- Weak Surface Blow Built to 1 1/4"

IS- No Blow

FF- Weak Surface Blow Built to 3/4"

FS- No Blow

Pressure vs. Time



PRESSURE SUMMARY

| Time (Min.) | Pressure (psig) | Temp (deg F) | Annotation |
|-------------|-----------------|--------------|----------------------|
| 0 | 2006.16 | 110.01 | Initial Hydro-static |
| 1 | 22.84 | 109.29 | Open To Flow (1) |
| 16 | 27.41 | 110.08 | Shut-In(1) |
| 46 | 1212.89 | 111.07 | End Shut-In(1) |
| 48 | 33.32 | 110.84 | Open To Flow (2) |
| 93 | 50.15 | 113.79 | Shut-In(2) |
| 189 | 1207.55 | 115.31 | End Shut-In(2) |
| 189 | 1910.47 | 115.66 | Final Hydro-static |

Recovery

| Length (ft) | Description | Volume (bbl) |
|-------------|-----------------------|--------------|
| 70.00 | 100% m with Oil Spots | 0.98 |
| | | |
| | | |
| | | |
| | | |

Gas Rates

| | Choke (inches) | Pressure (psig) | Gas Rate (Mcf/d) |
|--|----------------|-----------------|------------------|
| | | | |

* Recovery from multiple tests



**TRILOBITE
TESTING, INC.**

DRILL STEM TEST REPORT

FLUID SUMMARY

Shakespeare Oil Co. Inc

8-13s-32w Logan Co. KS

202 W. Main St.
Salem IL 62881

Peterson # 2-8

Job Ticket: 48845

DST#: 3

ATTN: Steve Davis

Test Start: 2012.09.18 @ 21:28:00

Mud and Cushion Information

Mud Type: Gel Chem

Cushion Type:

Oil API:

deg API

Mud Weight: 9.00 lb/gal

Cushion Length:

ft

Water Salinity:

ppm

Viscosity: 51.00 sec/qt

Cushion Volume:

bbbl

Water Loss: 7.20 in³

Gas Cushion Type:

Resistivity: ohm.m

Gas Cushion Pressure:

psig

Salinity: 3000.00 ppm

Filter Cake: 1.00 inches

Recovery Information

Recovery Table

| Length ft | Description | Volume bbl |
|--------------|-----------------------|---------------|
| 70.00 | 100% m with Oil Spots | 0.982 |

Total Length: 70.00 ft Total Volume: 0.982 bbl

Num Fluid Samples: 0

Num Gas Bombs: 0

Serial #:

Laboratory Name:

Laboratory Location:

Recovery Comments:

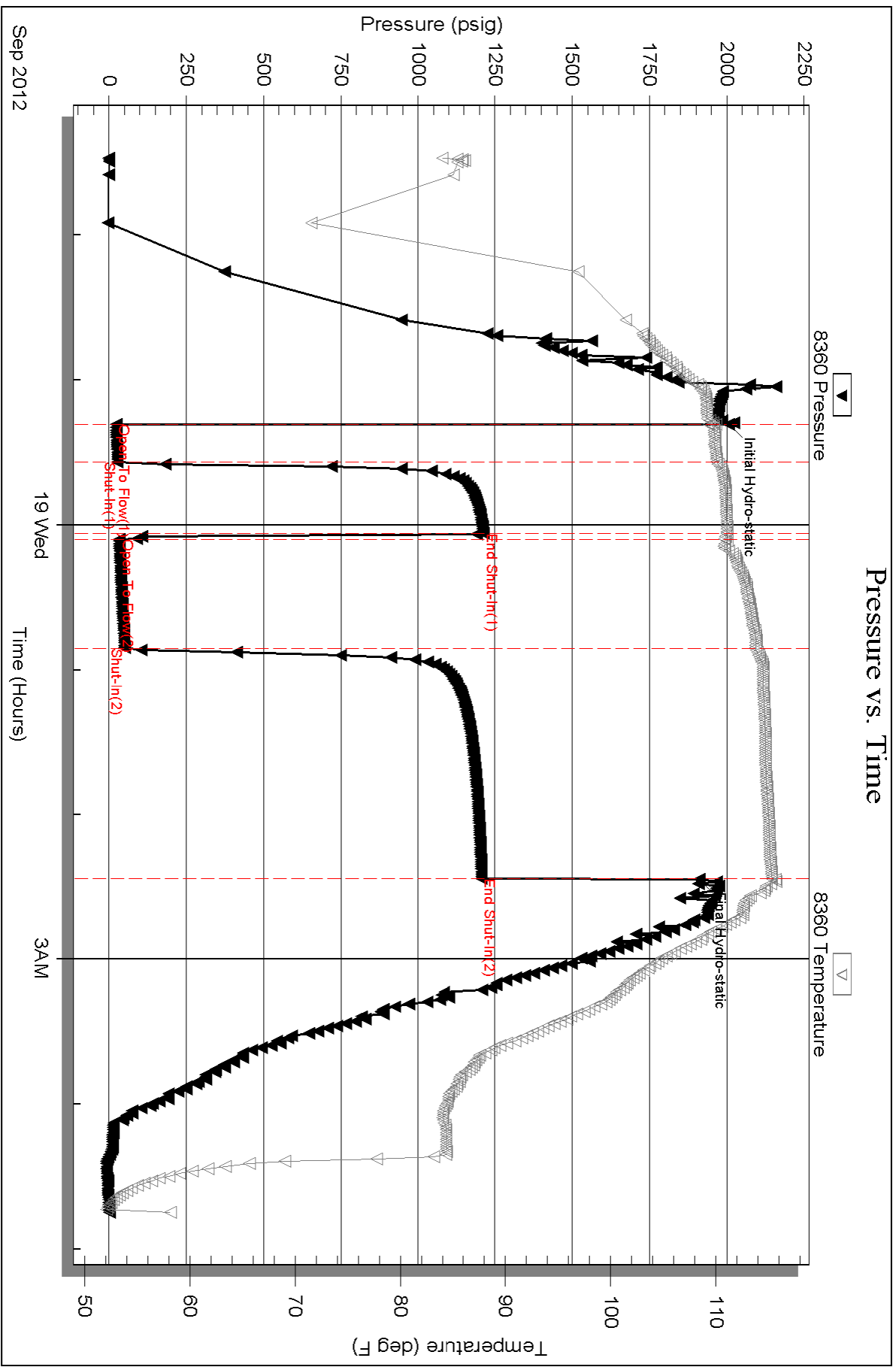
Serial #: 8360

Inside

Shakespeare Oil Co. Inc

Peterson # 2-8

DST Test Number: 3



Triobite Testing, Inc

Ref. No: 48845

Printed: 2012.09.19 @ 08:14:59