



**TRILOBITE  
TESTING, INC.**

# DRILL STEM TEST REPORT

Shakespeare Oil Co. Inc

**8-13s-32w Logan Co. KS**

202 W. Main St.  
Salem IL 62881

**Peterson # 2-8**

Job Ticket: 48847

**DST#: 5**

ATTN: Steve Davis

Test Start: 2012.09.20 @ 04:20:00

## GENERAL INFORMATION:

Formation: **LKC " L "**

Deviated: No Whipstock: ft (KB)

Time Tool Opened: 06:29:55

Time Test Ended: 10:06:54

Test Type: Conventional Bottom Hole (Reset)

Tester: Will MacLean

Unit No: 40

**Interval: 4228.00 ft (KB) To 4256.00 ft (KB) (TVD)**

Reference Elevations: 2981.00 ft (KB)

Total Depth: 4256.00 ft (KB) (TVD)

2971.00 ft (CF)

Hole Diameter: 7.88 inches Hole Condition: Good

KB to GR/CF: 10.00 ft

**Serial #: 8360**

**Inside**

Press @ Run Depth: 96.95 psig @ 4229.00 ft (KB)

Capacity: 8000.00 psig

Start Date: 2012.09.20

End Date: 2012.09.20

Last Calib.: 2012.09.20

Start Time: 04:20:00

End Time: 10:06:54

Time On Btm: 2012.09.20 @ 06:29:40

Time Off Btm: 2012.09.20 @ 08:22:55

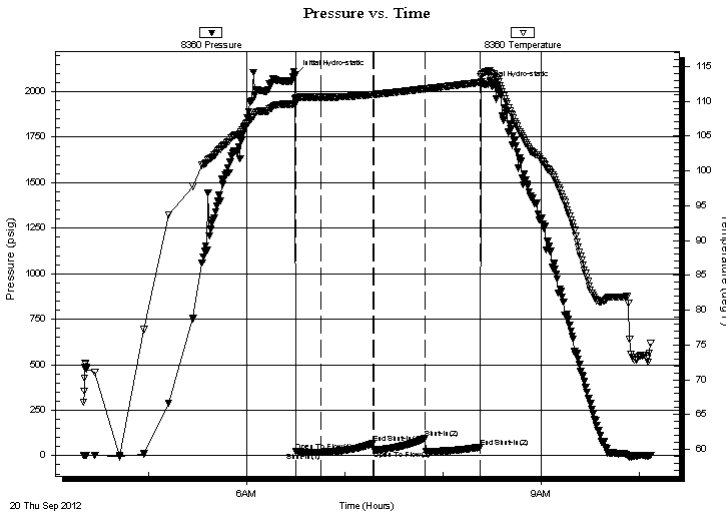
TEST COMMENT: IF- Weak Surface Blow 1/4"

IS- No Blow

FF- No Blow

FS- No Blow

## PRESSURE SUMMARY



Time (Min.)	Pressure (psig)	Temp (deg F)	Annotation
0	2091.96	110.49	Initial Hydro-static
1	22.27	109.73	Open To Flow (1)
16	19.89	110.56	Shut-In(1)
48	67.73	110.96	End Shut-In(1)
48	31.84	110.96	Open To Flow (2)
80	96.95	111.79	Shut-In(2)
113	46.76	112.69	End Shut-In(2)
114	2031.92	113.58	Final Hydro-static

## Recovery

Length (ft)	Description	Volume (bbl)
3.00	100% m with Oil Spots in Tool	0.04

## Gas Rates

	Choke (inches)	Pressure (psig)	Gas Rate (Mcf/d)

\* Recovery from multiple tests



**TRILOBITE  
TESTING, INC.**

# DRILL STEM TEST REPORT

**FLUID SUMMARY**

Shakespeare Oil Co. Inc

**8-13s-32w Logan Co. KS**

202 W. Main St.  
Salem IL 62881

**Peterson # 2-8**

Job Ticket: 48847

**DST#: 5**

ATTN: Steve Davis

Test Start: 2012.09.20 @ 04:20:00

## Mud and Cushion Information

Mud Type: Gel Chem

Cushion Type:

Oil API:

deg API

Mud Weight: 9.00 lb/gal

Cushion Length:

ft

Water Salinity:

ppm

Viscosity: 55.00 sec/qt

Cushion Volume:

bbbl

Water Loss: 8.77 in<sup>3</sup>

Gas Cushion Type:

Resistivity: ohm.m

Gas Cushion Pressure:

psig

Salinity: 3500.00 ppm

Filter Cake: 1.00 inches

## Recovery Information

Recovery Table

Length ft	Description	Volume bbl
3.00	100% m with Oil Spots in Tool	0.042

Total Length: 3.00 ft      Total Volume: 0.042 bbl

Num Fluid Samples: 0

Num Gas Bombs: 0

Serial #:

Laboratory Name:

Laboratory Location:

Recovery Comments:

Serial #: 8360

Inside

Shakespeare Oil Co. Inc

Peterson # 2-8

DST Test Number: 5

