

TRILOBITE
TESTING, INC.

DRILL STEM TEST REPORT

Prepared For: **N-10 Exploration LLC**

PO Box 195
Attica KS 67009

ATTN: Randy Newberry

10-34s-11w Barber,KS

Medicine River Ranch D #6

Start Date: 2012.05.21 @ 21:50:58

End Date: 2012.05.22 @ 06:54:28

Job Ticket #: 44798 DST #: 1

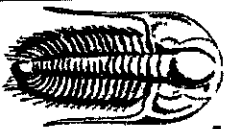
Trilobite Testing, Inc

PO Box 362 Hays, KS 67601

ph: 785-625-4778 fax: 785-625-5620

ORIGINAL

Printed: 2012.05.23 @ 13:24:24



TRIBOLITE
TESTING, INC

DRILL STEM TEST REPORT

N-10 Exploration LLC

Medicine River Ranch D #6

PO Box 195
Attica KS 67009

10-34s-11w Barber,KS

Job Ticket: 44798 DST#:1

ATTN: Randy Newberry

Test Start: 2012.05.21 @ 21:50:58

GENERAL INFORMATION:

Formation: **Meisner Sand** ft (KB)
Deviated: No Whipstock:
Time Tool Opened: 01:17:28
Time Test Ended: 06:54:28

Test Type: Conventional Bottom Hole (Initial)
Tester: Jeff Brown
Unit No: 44

Interval: **4857.00 ft (KB) To 4882.00 ft (KB) (TVD)**
Total Depth: **4882.00 ft (KB) (TVD)**
Hole Diameter: **7.88** inchesHole Condition: Good

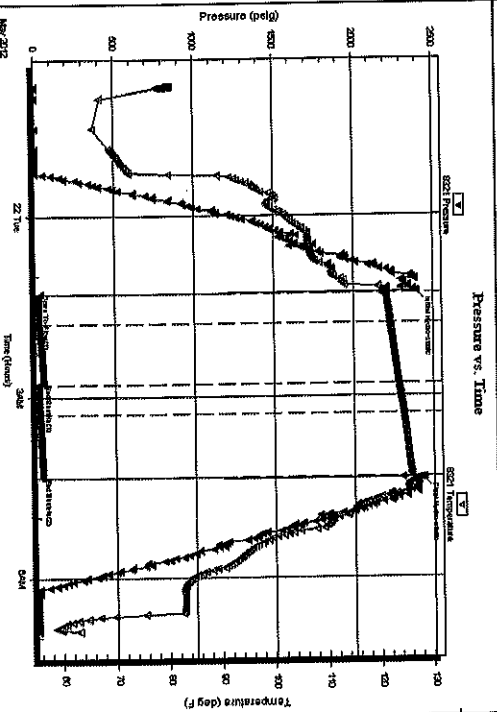
Reference Elevations: **1361.00 ft (KB)**
1351.00 ft (CF)
KB to GR/CF: **10.00 ft**

Serial #: 8321 Inside
Press@RunDepth: **22.66 psig @ 4860.00 ft (KB)**
Start Date: **2012.05.21** End Date:
Start Time: **21:50:59** End Time:

Capacity: **8000.00 psig**
Last Callb.: **2012.05.22**
Time On Btm: **2012.05.22 @ 01:16:58**
Time Off Btm: **2012.05.22 @ 04:22:28**

TEST COMMENT:

FFP-Weak blow built to 2 1/8 in
ISL-Dead no blow back
FFP-Weak blow built to 1/4 in
FSI-Dead no blow back



PRESSURE SUMMARY

Time (Min.)	Pressure (psig)	Temp (deg F)	Annotation
0	2397.51	121.35	Initial Hydro-static
1	34.03	119.98	Open To Flow (1)
31	23.07	122.00	Shut-In(1)
91	49.92	123.55	End Shut-In(1)
121	18.96	123.56	Open To Flow(2)
184	22.66	124.39	Shut-In(2)
186	41.81	125.90	End Shut-In(2)
186	2436.85	127.80	Final Hydro-static

Recovery

Length (ft)	Description	Volume (bbl)
5.00	Mud with oil spots	0.02

Gas Rates

Choke (inches)	Pressure (psig)	Gas Rate (Mcf/d)



TRILOBITE
TESTING, INC.

DRILL STEM TEST REPORT

N-10 Exploration LLC

Medicine River Ranch D #6

PO Box 195
Attica KS 67009

10-34s-11w Barber,KS

ATTN: Randy Newberry

Job Ticket: 44798 DST #:1

Test Start: 2012.05.21 @ 21:50:58

GENERAL INFORMATION:

Formation: **Meisner Sand**
 Deviated: **No** Whipstock: **ft (KB)**
 Time Tool Opened: 01:17:28
 Time Test Ended: 06:54:28

Test Type: **Conventional Bottom Hole (Initial)**
 Tester: **Jeff Brown**
 Unit No: **44**

Interval: **4857.00 ft (KB) To 4882.00 ft (KB) (TVD)**
 Total Depth: **4882.00 ft (KB) (TVD)**
 Hole Diameter: **7.88** InchesHole Condition: **Good**

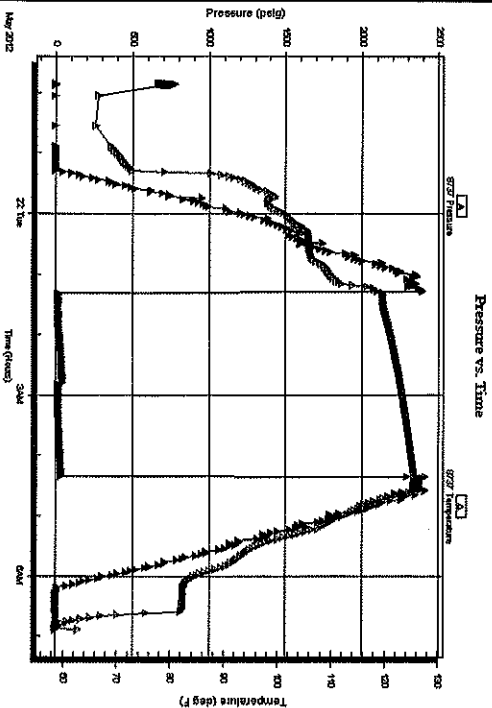
Reference Elevations: **1361.00 ft (KB)**
1351.00 ft (CF)
 KB to GR/CF: **10.00 ft**

Serial #: 8737 **Outside**
 Press@RunDepth: **psig @ 4860.00 ft (KB)**
 Start Date: **2012.05.21** End Date: **2012.05.22**
 Start Time: **21:50:52** End Time: **06:54:21**

Capacity: **8000.00 psig**
 Last Callb.: **2012.05.22**
 Time On Btm: **06:54:21**
 Time Off Btm:

TEST COMMENT:

FFP-Weak blow built to 2 1/8 in
 ISH-Dead no blow back
 FFP-Weak blow built to 1/4 in
 FSI-Dead no blow back



PRESSURE SUMMARY

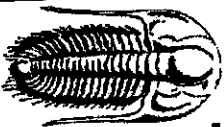
Time (Min.)	Pressure (psig)	Temp (deg F)	Annotation

Recovery

Length (ft)	Description	Volume (bbl)
5.00	Mud with oil spots	0.02

Gas Rates

Choke (Inches)	Pressure (psig)	Gas Rate (Mcf/d)



TRILOBITE
TESTING, INC

DRILL STEM TEST REPORT

TOOL DIAGRAM

N-10 Exploration LLC

Medicine River Ranch D #6

PO Box 195
Attica KS 67009

10-34s-11w Barber, KS

Job Ticket: 44798

DST#: 1

ATTN: Randy Newberry

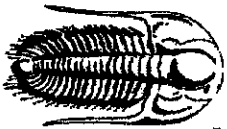
Test Start: 2012.05.21 @ 21:50:58

Tool Information

Drill Pipe:	Length: 4730.00 ft	Diameter:	3.80 inches	Volume:	66.35 bbl	Tool Weight:	2000.00 lb
Heavy Wt. Pipe:	Length: 0.00 ft	Diameter:	2.70 inches	Volume:	0.00 bbl	Weight set on Packer:	20000.00 lb
Drill Collar:	Length: 118.00 ft	Diameter:	2.25 inches	Volume:	0.58 bbl	Weight to Pull Loose:	90000.00 lb
			Total Volume:	66.93 bbl		Tool Chased	8.00 ft
Drill Pipe Above KB:	11.00 ft					String Weight: Initial	74000.00 lb
Depth to Top Packer:	4857.00 ft					Final	75000.00 lb
Depth to Bottom Packer:	ft						
Interval betw een Packers:	25.00 ft						
Tool Length:	45.00 ft						
Number of Packers:	2	Diameter:	6.75 inches				

Tool Comments:

Tool Description	Length (ft)	Serial No.	Position	Depth (ft)	Accum. Lengths
Change Over Sub	1.00			4838.00	
Shut In Tool	5.00			4843.00	
Hydraulic tool	5.00			4848.00	
Packer	4.00			4852.00	20.00
					Bottom Of Top Packer
Packer	5.00			4857.00	
Stubb	1.00			4858.00	
Perforations	2.00			4860.00	
Recorder	0.00	8321	Inside	4860.00	
Recorder	0.00	8737	Outside	4860.00	
Perforations	19.00			4879.00	25.00
Bullnose	3.00			4882.00	Bottom Packers & Anchor
Total Tool Length:				45.00	



TRILOBITE
TESTING, INC

DRILL STEM TEST REPORT

FLUID SUMMARY

N-10 Exploration LLC

Medicine River Ranch D #6

PO Box 195
Atica KS 67009

10-34s-11w Barber, KS

ATTN: Randy New berry

Job Ticket: 44798

DST#: 1

Test Start: 2012.05.21 @ 21:50:58

Mud and Cushion Information

Mud Type: Gel Chem	Cushion Type:	Oil API:	deg API
Mud Weight: 9.00 lb/gal	Cushion Length:	Water Salinity:	ppm
Viscosity: 50.00 sec/qt	Cushion Volume:		
Water Loss: 11.18 in ³	Gas Cushion Type:		
Resistivity: ohm.m	Gas Cushion Pressure:		psig
Salinity: 3000.00 ppm			
Filter Cake: Inches			

Recovery Information

Recovery Table

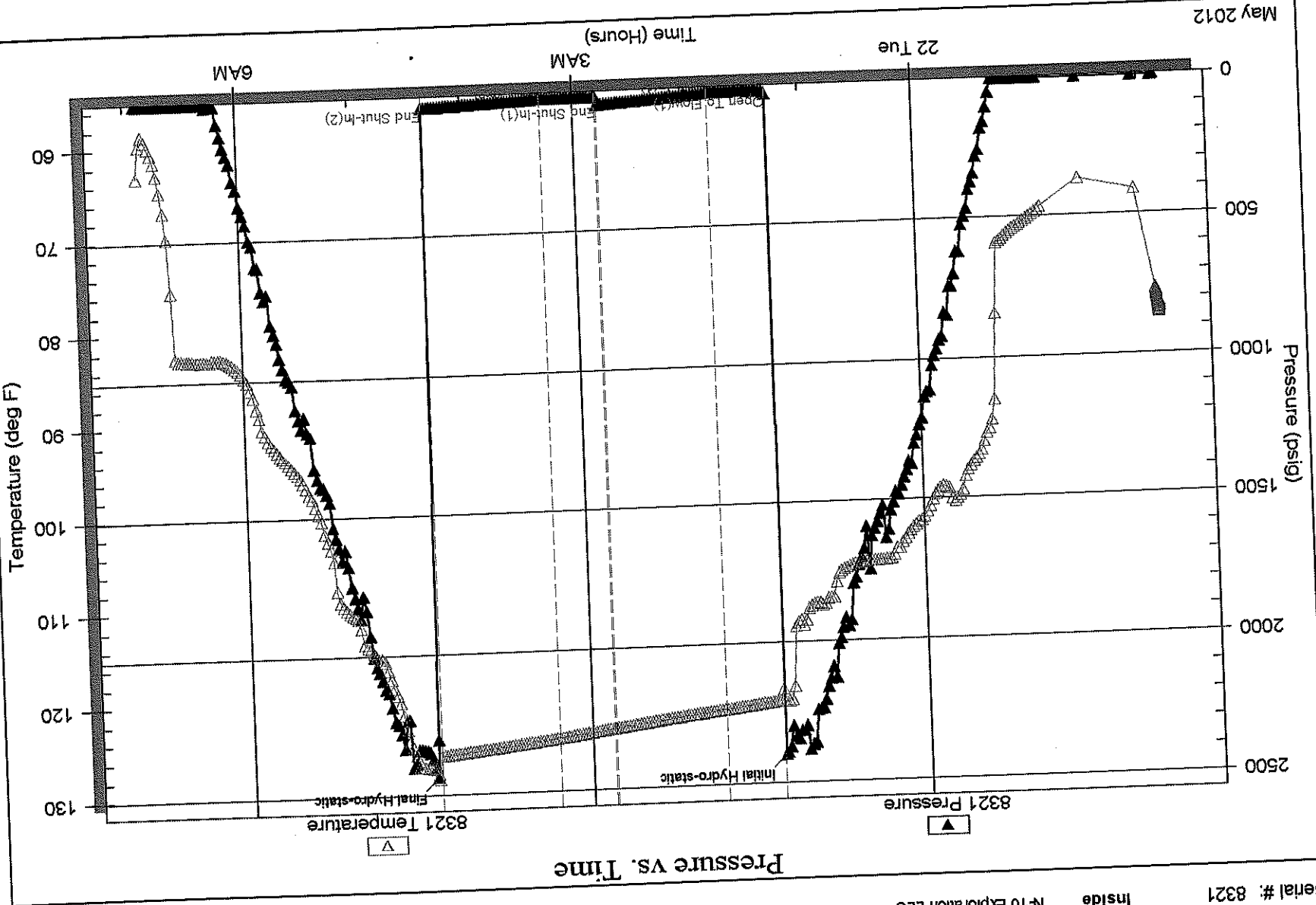
Length ft	Description	Volume bbl
5.00	Mud w 5th oil spots	0.025

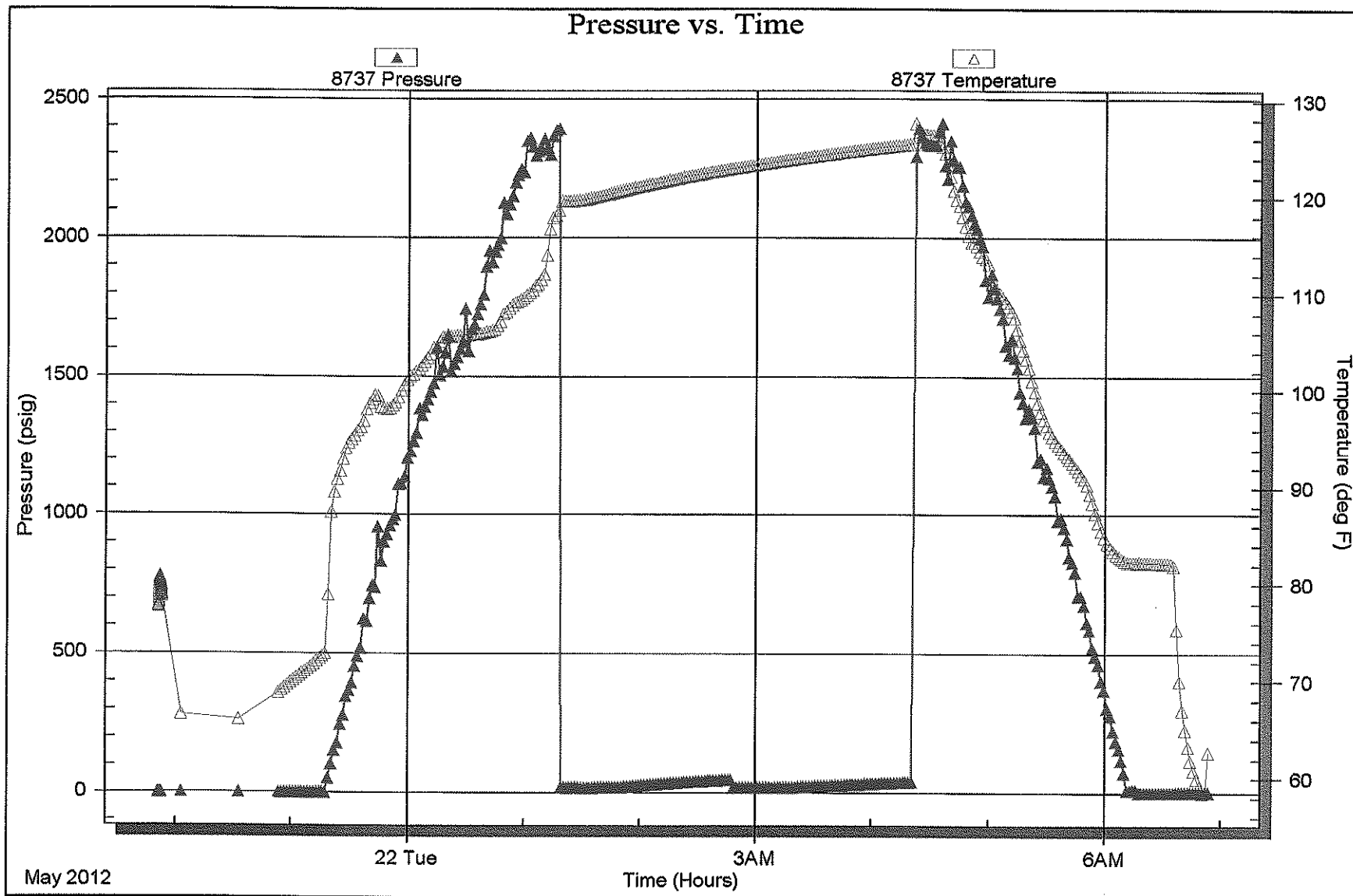
Total Length: 5.00 ft Total Volume: 0.025 bbl

Num Fluid Samples: 0 Num Gas Bombs: 0 Serial #:

Laboratory Name: Laboratory Location:

Recovery Comments:







TRILOBITE
TESTING INC.

P.O. Box 1733 • Hays, Kansas 67601

Test Ticket
NO. 44798

Well Name & No. Medicine River Ranch D-40 Test No. 1 Date 5-21-12
 Company N-ID EXPLORATION LLC Elevation 1360 KB 1351 GL
 Address PO Box 195 ATTICA KS 67809
 Co. Rep / Geo. Tim Pierce Rig Handt Drilling #1
 Location: Sec. 10 Twp. 34 S Rge. 11W Co. Barber State KS

Interval Tested 4857-4882 Zone Tested Melissner SAND
 Anchor Length 25 Drill Pipe Run 4730 Mud Wt. 9.4
 Top Packer Depth 4852 Drill Collars Run 118 Vis 50
 Bottom Packer Depth 4857 Wt. Pipe Run 0 WL 11.2
 Total Depth 4882 Chlorides 3000 ppm System LCM 3#
 Blow Description SP-Week Blow Built to 2 Y3 IN

ISE-Dead No Blow Back
PP-Week Blow Built to Y4 IN
ISE-Dead No Blow Back

Rec	Feet of	%gas	%oil	%water	%mud
Rec <u>5</u>	Feet of <u>Mud with oil SPITS</u>				
Rec	Feet of	%gas	%oil	%water	%mud
Rec	Feet of	%gas	%oil	%water	%mud
Rec	Feet of	%gas	%oil	%water	%mud

Rec Total 5 BHT 120 Gravity Test 1250 API RW @ ° F Chlorides ppm
 (A) Initial Hydrostatic 2398 Jars T-On Location 21:02
 (B) First Initial Flow 34 Safety Joint T-Started 21:50
 (C) First Final Flow 23 Circ Sub T-Open 1:18
 (D) Initial Shut-In 50 Hourly Standby T-Pulled 4:18
 (E) Second Initial Flow 19 Mileage 330 RT 102RT 158.10 T-Out 6:54
 (F) Second Final Flow 23 Sampler Stayed IN Medicine Well
 (G) Final Shut-In 42 Straddle 158.10 pu tools
 (H) Final Hydrostatic 2437 Shale Packer Ruined Shale Packer
 Extra Packer Ruined Packer
 Extra Recorder Extra Copies
 Sub Total 0
 Total 1566.20
 MP/DST Disc't

Initial Open 30
 Initial Shut-In 60
 Final Flow 30
 Final Shut-In 60
 Sub Total 1408.10

Approved By Jeff Brown Our Representative
 TriLOBITE Testing Inc. shall not be liable for damaged or personal of any kind of the property or personnel of the one for whom a test is made, or for any loss suffered or sustained, directly or indirectly, through the use of its equipment, or its statements or opinion concerning the results of any test, tools lost or damaged in the hole shall be paid for at cost by the party for whom the test is made.