

Timothy G. Pierce

Petroleum Geologist

GEOLOGIST'S REPORT DRILLING TIME AND SAMPLE LOG

COMPANY N-10 Exploration, LLC
 LEASE Medicine River Ranch 'D' #6
 FIELD Landis
 LOCATION 1610' FSL & 1400' FEL
 SEC 10 TWPSP 34S RGE 11W
 COUNTY Barber STATE Kansas
 CONTRACTOR Hardt Drilling Rig #1
 SPUD 5-16-2012 COMP 5-23-2012
 RTD 5100 LTD 5103
 MUD UP 2966 TYPE MUD Chemical

ELEVATIONS

KB 1361'
 DF _____
 GL 1351'
 Measurements Are All
 From Kelly Bushing

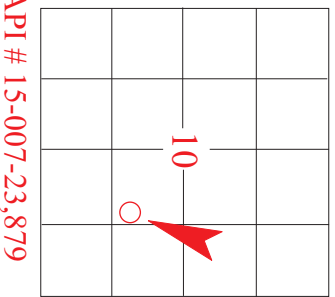
CASING

CONDUCTOR _____
 SURFACE 8-5/8" at 257'
 PRODUCTION 5-1/2" at 5089'

ELECTRICAL SURVEYS

DIL / CN-CD
 Log-Tech


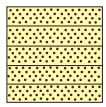
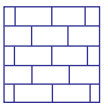
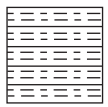

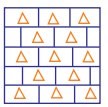
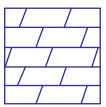
FORMATION TOPS	ELECTRIC LOG	SAMPLE
Heebner Sh.	3616 (-2255)	NA
Stark Sh.	4300 (-2939)	4296 (-2935)
Cherokee Sh.	4520 (-3159)	4518 (-3157)
Mississippi	4578 (-3217)	4556 (-3195)
Kinderhook Sh.	4758 (-3397)	4756 (-3395)
Chattanooga Sh.	4842 (-3481)	4842 (-3481)
Viola	4894 (-3533)	4896 (-3535)
Simpson	4988 (-3627)	4986 (-3625)



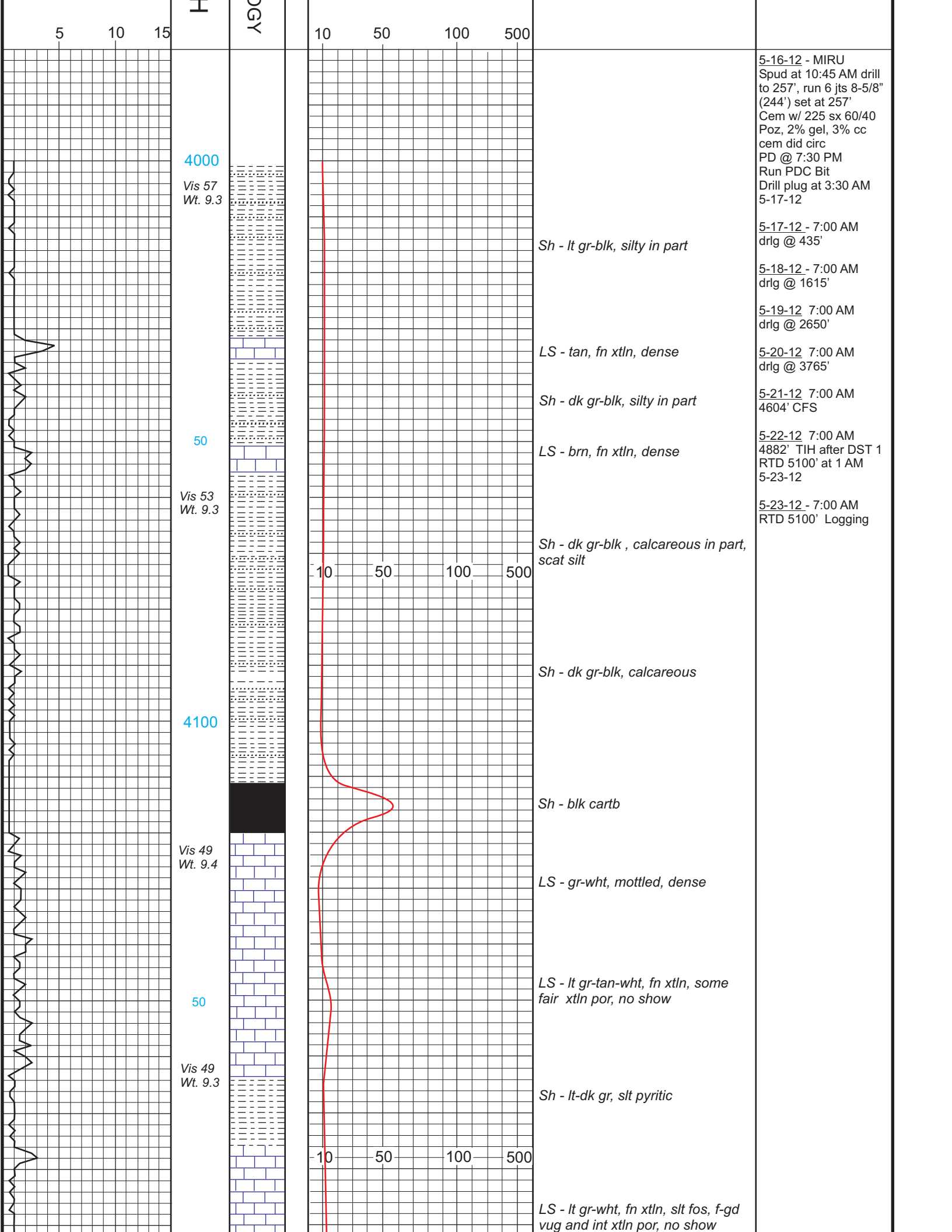
REMARKS The ground level elevation was changed from the surveyed elevation due to leveling of location
Samples and electric logs indicate a productive zone in the Mississippi from 4586'-4652'.
Samples indicated a show in the Meisner sand which was evaluated by DST #1
A sample show was observed in the Chattanooga Sh. From 4842'-4861'
A gas kick was registered in the Pawnee LS from 4488'-4491', samples indicated porosity but there was no visible show of oil or gas.
Electric logs indicate this to be a possible productive zone, this should be evaluated before abandonment.
A slight show of gas was observed in the Hushpuckney shale from 4330'-4336'.
There were no other zones of interest indicated by samples or electric logs

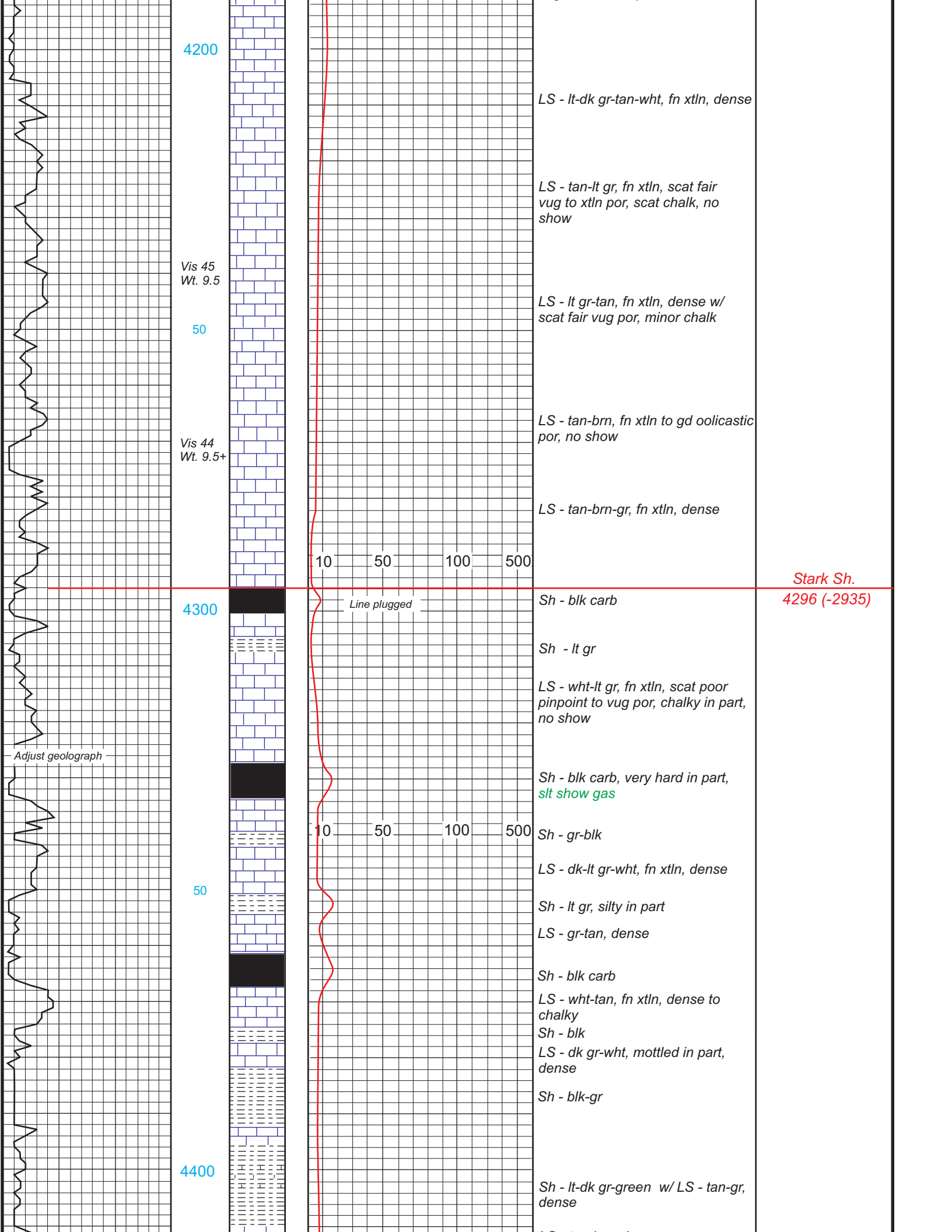
Timothy G. Pierce

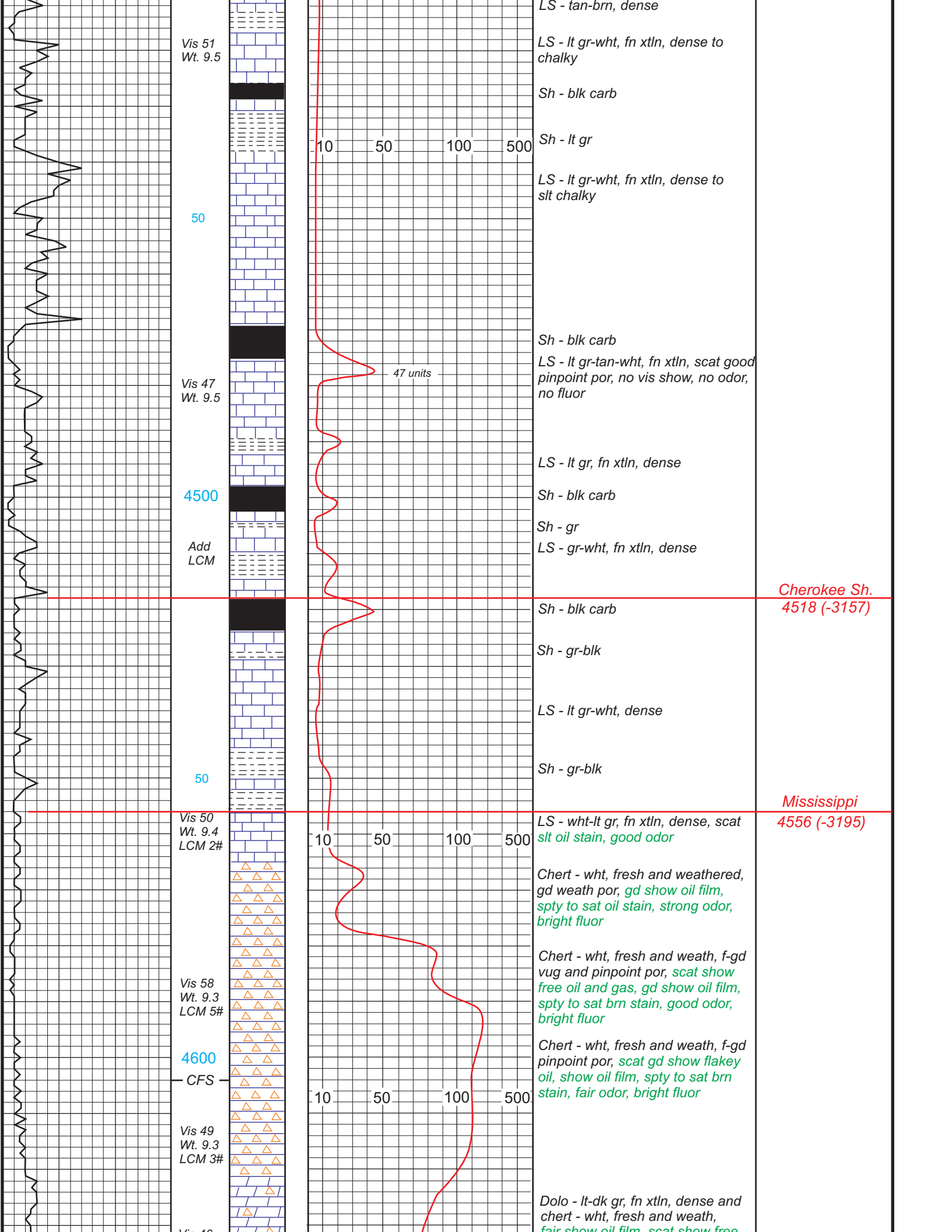
LEGEND

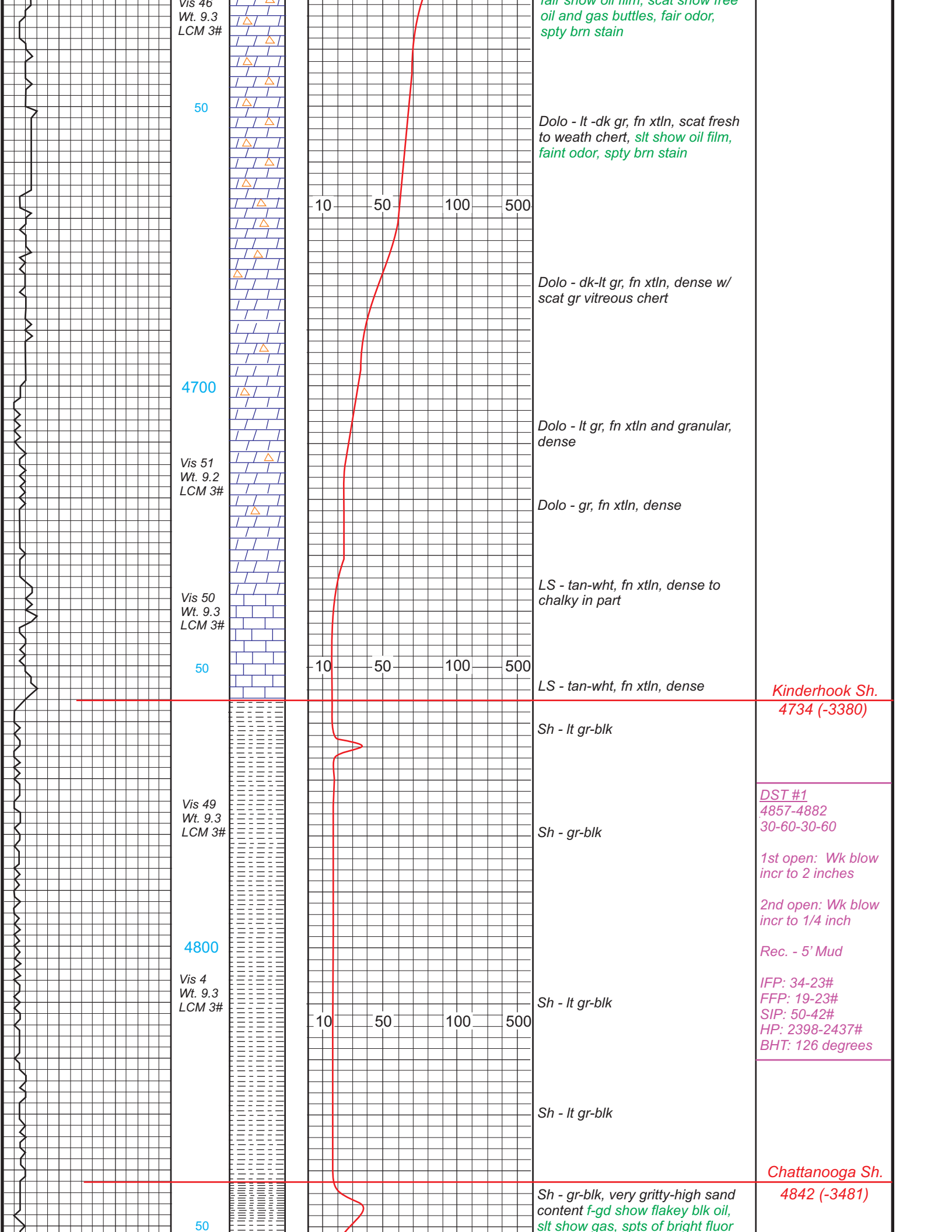
							
Anhydrite	Sandstone	Limestone	Shale	Carb Sh	Cherty LS	Chert	Dolomite

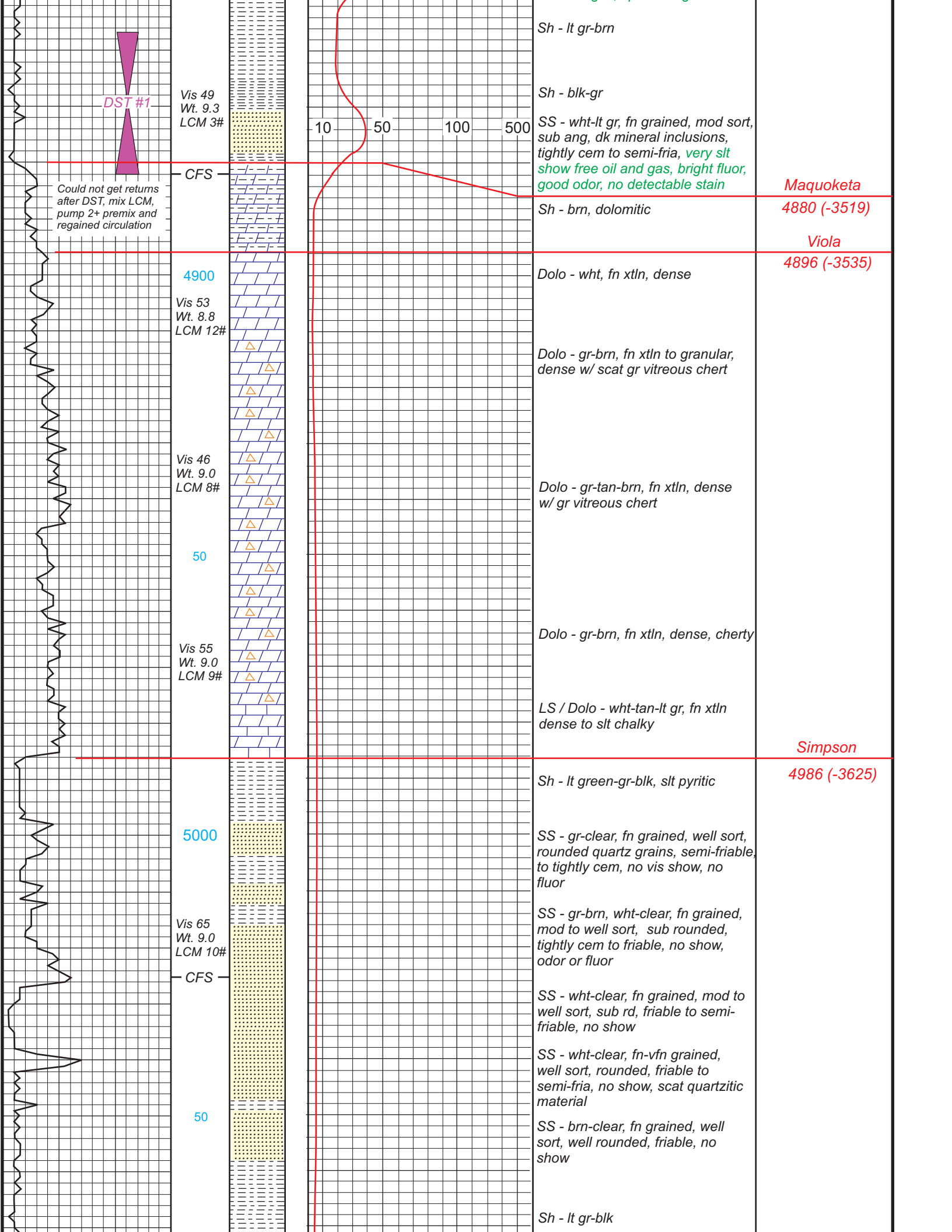
DRILLING TIME IN MINUTES PER FOOT Rate of Penetration Decreases ↓	DEPTH	LITHOLOG	GAS SCALE	SAMPLE DESCRIPTION	REMARKS











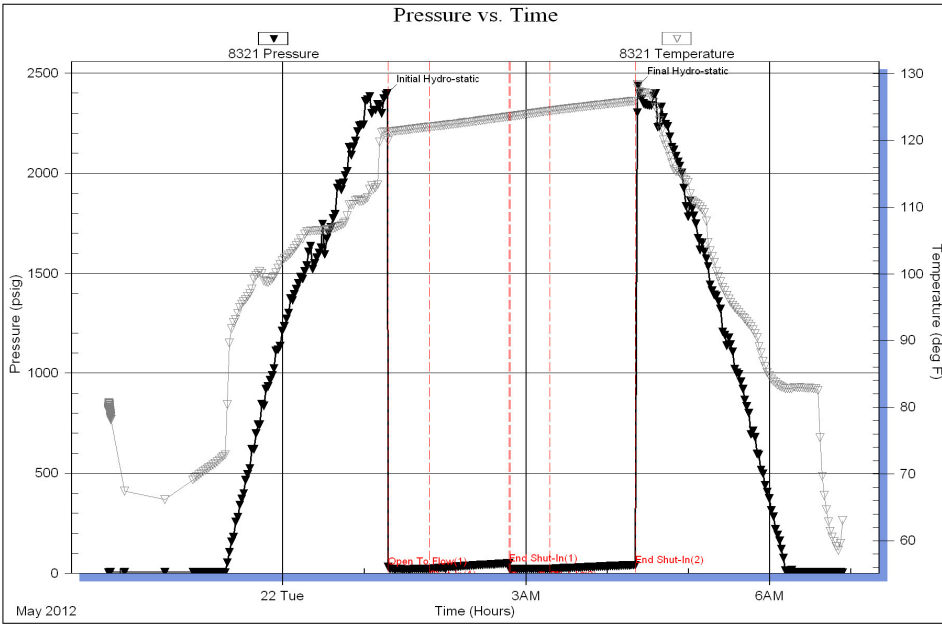
Vis 69
Wt. 9.0
LCM 9#

5100

Sh - lt gr-blk

RTD 5100'

Serial #: 8321 Inside N-10 Exploration LLC Medicine River Ranch DST Test Number: 1



*DST #1
4857-4882
30-60-30-60*

*1st open: Wk blow
incr to 2 inches*

*2nd open: Wk blow
incr to 1/4 inch*

Rec. - 5' Mud

*IFP: 34-23#
FFP: 19-23#
SIP: 50-42#
HP: 2398-2437#
BHT: 126 degrees*

