

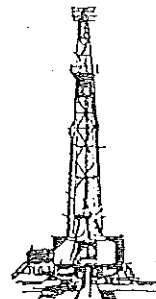


# ROBERT E. MOSER, R.L.S.

Oil Field Surveying

335 N. Mission Road • Wichita, Kansas 67206

(316) 683-2853



INVOICE NO.

VESS OIL CORPORATION 446  
OPERATOR NO.

WILSON "A"  
FARM

BUTLER (KS) 8 25 5 E  
COUNTY S T R

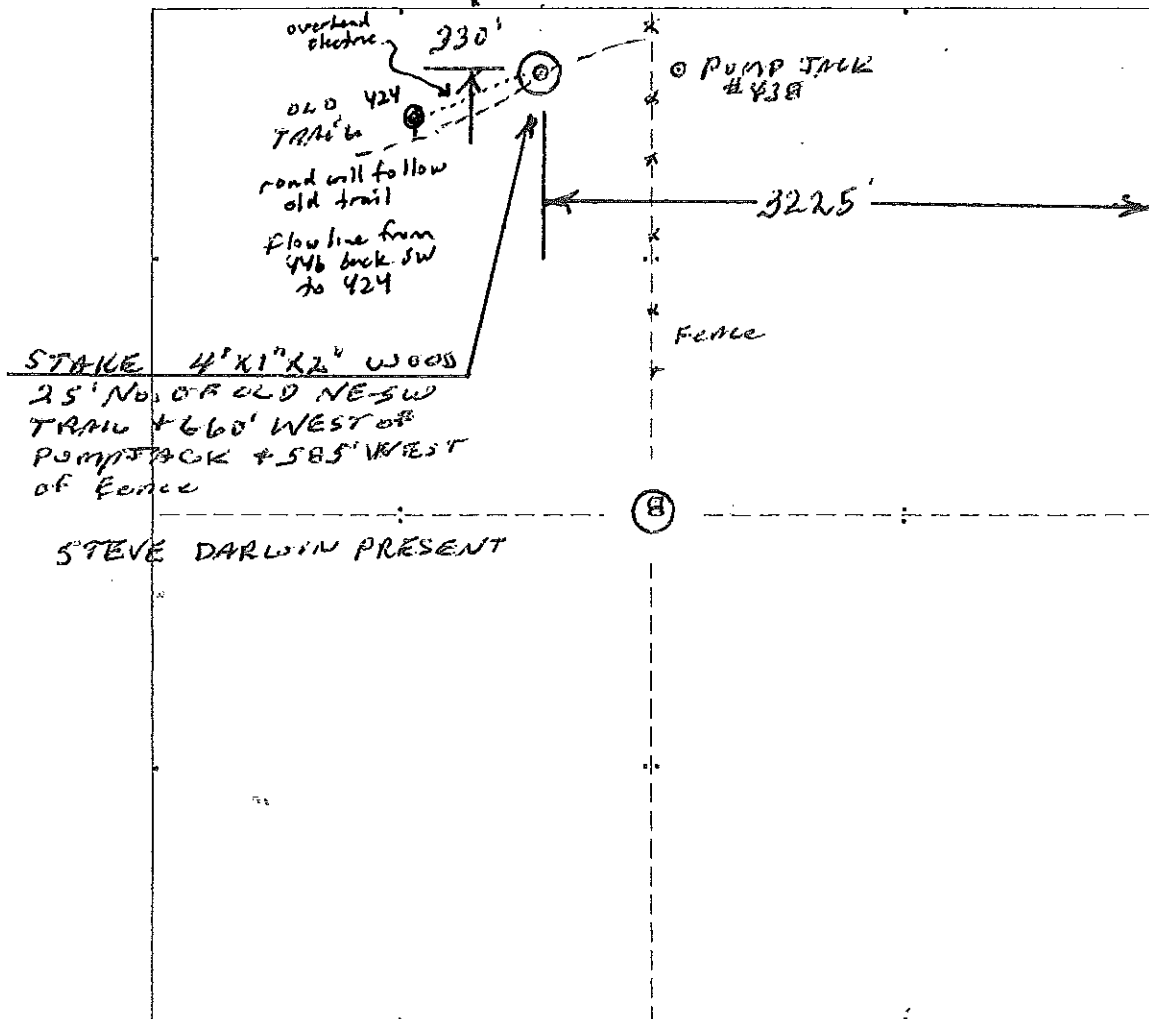
330' FNL 3225' FEL  
LOCATION

ELEVATION: 1389<sup>3</sup> GC

VESS OIL CORPORATION  
8100 E. 22<sup>nd</sup> ST. NO.  
WICHITA, KS, 67226

AUTHORIZED BY: MR. C. COATS

SCALE: 1" = 1000'



Date: 9/26/12

R. E. Moser

Surveyor:

RE MOSER RLS # 326 KS