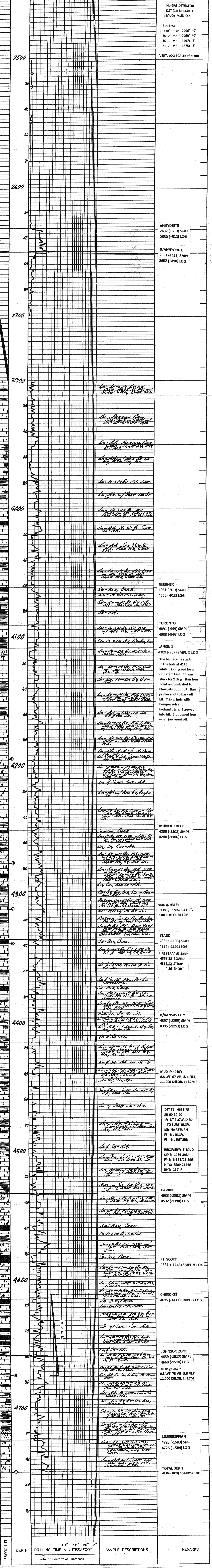
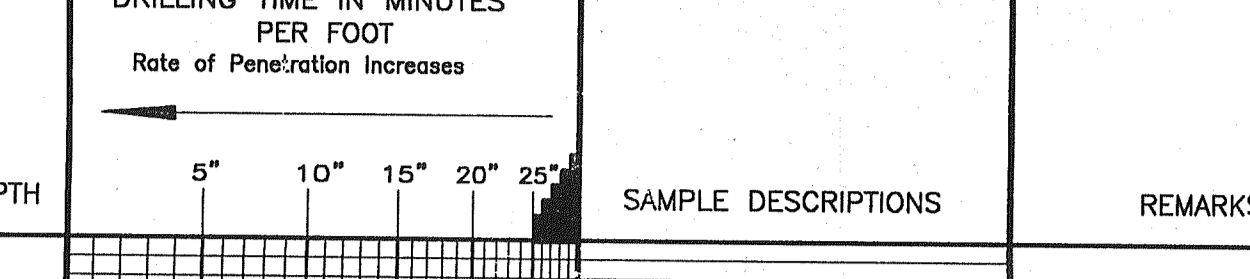


JERRY A. SMITH
CERTIFIED PETROLEUM GEOLOGIST

GEOLOGIST'S REPORT
DRILLING TIME and SAMPLE LOG

COMPANY: MCCOY PETROLEUM CORPORATION	ELEVATIONS
LEASE: KARLIN "B" #1-3	KB, 3142
FIELD: WILD CAT	D.F.
LOCATION: 990 FSL & 2310 FWL	G.L. 3131
SEC. 3	TWP. 11
COUNTY: LOGAN	STATE: KANSAS
CONTRACTOR: MURFIN, RIG #2	CASING
RTD. 4780	COMP. 9/6/12
MUD DP: 3534	LTD. 4750
API No. 15-108-21190	TYPE MUD: CHEMICAL
SAMPLES SAVED FROM: 3800	TO: RTD
DRILLING TIME KEPT FROM: 3500/3900	TO: RTD
SAMPLES EXAMINED FROM: 3600	TO: RTD
GEOLOGICAL SUPERVISION FROM: 3600	TO: RTD
GEOLOGIST ON WELL: JERRY A. SMITH	
FORMATION TOPS	LOG
ANHYDRITE	2630 (+512)
HEEBNER	4060 (-918)
TORONTO	4088 (-946)
LANSING	4109 (-967)
MUNCIE CREEK	4248 (-1106)
STARK	4335 (-1193)
BKANSAS CITY	4395 (-1253)
PAWNEE	4532 (-1391)
CHEROKEE	4615 (-1473)
JOHNSON ZONE	4690 (-1518)
MISSISSIPPIAN	4726 (-1584)
	SAMPLES
	2632 (+510) SMPL
	2630 (+512) LOG
	B/ANHYDRITE
	2651 (+491) SMPL
	2652 (+490) LOG
	4061 (-919) SMPL
	4060 (-918) LOG
	4091 (-949) SMPL
	4088 (-946) LOG
	4109 (-967) SMPL & LOG
	4250 (-1108) SMPL
	4248 (-1106) LOG
	4335 (-1193) SMPL
	4334 (-1192) LOG
	4395 (-1253) SMPL
	4395 (-1253) LOG
	4533 (-1391) SMPL
	4532 (-1390) LOG
	4587 (-1445) SMPL & LOG
	4615 (-1473) SMPL & LOG
	4659 (-1517) SMPL
	4660 (-1518) LOG
	4726 (-1584) SMPL
	4726 (-1584) LOG

LEGEND



COMPANY: MCCOY PETROLEUM CORPORATION	ELEVATION: 3142 KB
LEASE: KARLIN "B" #1-3	
LOCATION: 990 FSL & 2310 FWL	SEC 3
	TWP 11
	RGE 33W
COUNTY: LOGAN	STATE: KANSAS