

Scale 1:240 (5"=100') Imperial
Measured Depth Log

Well Name: Phillip # 3-26
Location: 1271'FNL, 1845'FWL, 26-13S-31W, Scott County, Kansas
License Number: API: 15-063-22023
Spud Date: 7-24-12
Surface Coordinates: Lat: 38.8992508 Long: -100.7354153
Bottom Hole Coordinates: Vertical hole

Ground Elevation (ft): 2862' K.B. Elevation (ft): 2867'
Logged Interval (ft): 3600' To: RTD Total Depth (ft): 4630'
Formation: Mississippian at RTD
Type of Drilling Fluid: Chemical

Printed by MUD.LOG from WellSight Systems 1-800-447-1534 www.WellSight.com

GEOLOGIST

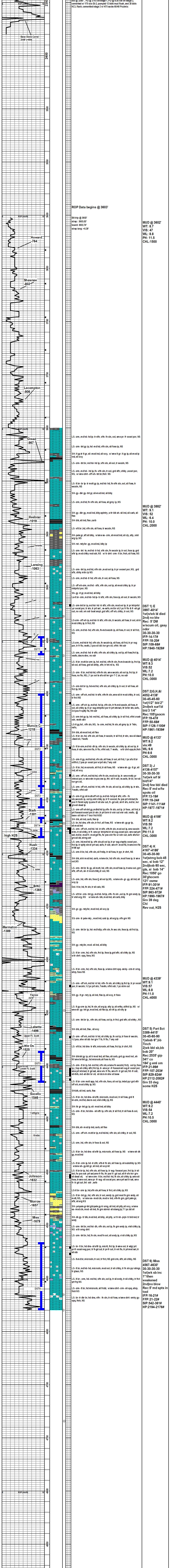
Name: Bob Schreiber
Company: Independent
Address: 268 NE 220 Rd
Holsington, KS 67544

COMMENTS

Contractor: Murfin Drilling Company Rig #24
Pusher: Tony Martin
Surface Casing: 8 5/8" set @ 211'
Production Casing: 5 1/2" set at 4626'
Mud by: MudCo
DST's by: Diamond Testing
Logs by: Weatherford (DL, CN-CD, ML)
RTD=4630'
LTD=4628'

FORMATION TOPS

FORMATION	SAMPLE TOPS		LOG TOPS	
	Depth	Datum	Depth	Datum
Stone Corral	2348'	+519	2346'	+521
B/Stone Corral	2368'	+499	2368'	+499
Heebner Shale	3886'	-1019	3884'	-1017
Lansing	3930'	-1063	3927'	-1060
Muncie Creek Shale	4085'	-1218	4185'	-1215
Stark Shale	4168'	-1301	4164'	-1297
Hushpuckney Shale	4201'	-1334	4199'	-1332
Marmaton	4256'	-1389	4263'	-1396
Upper Fort Scott	4371'	-1501	4369'	-1502
Little Osage Shale	4392'	-1525	4388'	-1521
Excello Zone	4422'	-1546	4419'	-1552
Johnson Zone	4499'	-1632	4497'	-1630
Morrow	4524'	-1652	4524'	-1656
Mississippian	4546'	-1679	4545'	-1678
RTD	4630'	-1763		
LTD			4628'	-1761



Morning Report Depth/Activity

7/24/12: MRRU Rig #24 Spud 2:45 PM set 8 5/8" @ 211', cement w/165 sacks common, PD @ 8:45 PM, Survey 1/8 deg

7/25/12: Drig @ 360

7/26/12: Drig @ 2430'

7/27/12: Bit Trip @ 3602', lost circ 3415' during displacement, survey 1/4 deg @ 3602'

7/28/12: Drig @ 3000'

7/29/12: DST 1 @ 4014', Lans E

7/30/12: DST 2 @ 4138', Lans G

7/31/12: DST 3 @ 4157', Lans J, circ @ 4186'

8/1/12: DST 4 @ 4186', Lans K

8/2/12: DST 5 @ 4415', Fort Scott

8/3/12: Circ @ 4630', DST 6, Miss

8/4/12: RTD 4630, LTD 4628' ran 111 jnts 5 1/2" 15.5# set @ 4626', DV too @ 2380', PD @ 3:15 AM stage 1, PD @ 6:30 AM on stage 2, cemented w/ 175 sacks EA, pumped 12 bolts mud flush, and 20 bolts KCL flush, cemented stage 2 w/ 475 sacks 60/40 Pozmic

ROP Data begins @ 3603'

Bit trip @ 3603'
strap : 3603.0'
board: 3602.74'
strap long: +0.29'

MUD @ 3602'
WT: 8.7
VIS: 47
WL: 8.8
PH: 11.5
CHL: 1500

MUD @ 3882'
WT: 9.1
VIS: 52
WL: 6.4
PH: 10.0
CHL: 2000

MUD @ 4014'
WT: 9.3
VIS: 52
WL: 7.2
PH: 10.0
CHL: 3000

DST 2) G, H, & I
4052-4138'
30-45-60-30
1st)1/2" bid 2"
2nd)wk surf bl bid 3 1/4"
Rec: 105'gsoem
FFP: 19-47#
SIP: 1126-1100#
HP: 1961-1939#

MUD @ 4133'
WT: 9.2
VIS: 49
WL: 9.6
PH: 9.6
CHL: 3000

DST 3) J
4136-4157'
30-30-30-30
1st)wk surf bl bid 1/4"
2nd) few bbl died
Rec: 5' md w/w spots oil
FFP: 13-19#
SIP: 1141-1114#
HP: 1977-1971#

MUD @ 4186'
WT: 9.2
VIS: 50
WL: 7.2
PH: 11.0
CHL: 3000

DST 4) K
4167-4186'
30-45-60-30
1st)strng bob 45 sec, si bob 12"
2nd)bob 60 sec, gts: si bob 14"
Rec: 1050' go 30'ghocwm
121' osmw
FFP: 324-471#
SIP: 963-972#
HP: 2112-2082#
Grv 33 deg some H2S

MUD @ 4339'
WT: 9.1
VIS: 57
WL: 8.8
PH: 11.0
CHL: 4000

DST 5) Fort Sct
3389-4415'
30-45-60-30
1)sbob 6", bb 7inch
2)wk lbd sb, bb bob 20"
Rec: 2535' gip 341' co
184' g eml om
FFP: 21-99#
SIP: 107-203#
SIP: 829-824#
HP: 2112-2082#
Grv 33 deg some H2S

MUD @ 4440'
WT: 9.2
VIS: 54
WL: 7.2
PH: 10.5
CHL: 3000

DST 6) Miss
4567-4630'
30-30-30-30
1st)wk sb inc 17" then weakened
2nd)no blow Rec: 5' md spts in tool
FFP: 16-21#
SIP: 542-361#
HP: 2194-2176#