



**TRILOBITE  
TESTING, INC.**

# DRILL STEM TEST REPORT

Abercrombie Energy LLC.

**26-10s-18w Rooks**

10209 W. Central  
STE 2  
Wichita Ks. 67212  
ATTN: Steve Murphy

**Rouback #1-26**

Job Ticket: 49312

**DST#: 1**

Test Start: 2012.09.19 @ 15:43:05

## GENERAL INFORMATION:

Formation: **Tor- LKC"A"**

Deviated: No Whipstock: ft (KB)

Time Tool Opened: 18:00:30

Time Test Ended: 21:57:39

Test Type: Conventional Bottom Hole (Initial)

Tester: Andy Carreira

Unit No: 39

**Interval: 3264.00 ft (KB) To 3320.00 ft (KB) (TVD)**

Reference Elevations: 2076.00 ft (KB)

Total Depth: 3320.00 ft (KB) (TVD)

2066.00 ft (CF)

Hole Diameter: 7.88 inches Hole Condition: Poor

KB to GR/CF: 10.00 ft

**Serial #: 8372 Outside**

Press @ RunDepth: 23.81 psig @ 3270.00 ft (KB)

Capacity: 8000.00 psig

Start Date: 2012.09.19

End Date:

2012.09.19

Last Calib.:

2012.09.19

Start Time:

15:43:05

End Time:

21:57:40

Time On Btm:

2012.09.19 @ 17:59:30

Time Off Btm:

2012.09.19 @ 20:03:29

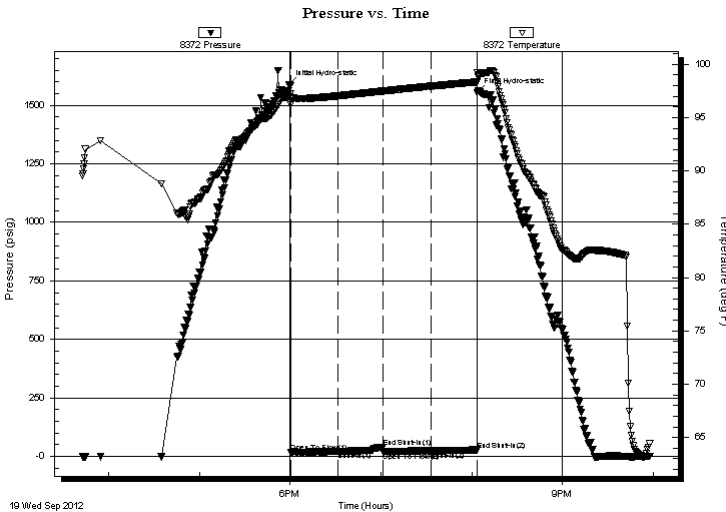
**TEST COMMENT:** IF:(30min) Blow died in 4 min.

IS:(30min) No Return

FF:(30min) No Blow

FS:(30min) No Return

## PRESSURE SUMMARY



Time (Min.)	Pressure (psig)	Temp (deg F)	Annotation
0	1587.30	96.98	Initial Hydro-static
1	19.22	96.22	Open To Flow (1)
32	22.03	97.05	Shut-In(1)
62	40.74	97.50	End Shut-In(1)
62	19.64	97.49	Open To Flow (2)
94	23.81	97.95	Shut-In(2)
124	28.39	98.35	End Shut-In(2)
124	1555.14	99.21	Final Hydro-static

## Recovery

Length (ft)	Description	Volume (bbl)
2.00	Mud	0.03

## Gas Rates

Choke (inches)	Pressure (psig)	Gas Rate (Mcf/d)



**TRILOBITE  
TESTING, INC.**

# DRILL STEM TEST REPORT

**FLUID SUMMARY**

Abercrombie Energy LLC.

**26-10s-18w Rooks**

10209 W. Central  
STE 2  
Wichita Ks. 67212  
ATTN: Steve Murphy

**Rouback #1-26**

Job Ticket: 49312

**DST#: 1**

Test Start: 2012.09.19 @ 15:43:05

## Mud and Cushion Information

Mud Type: Gel Chem

Cushion Type:

Oil API:

deg API

Mud Weight: 9.00 lb/gal

Cushion Length:

ft

Water Salinity:

ppm

Viscosity: 65.00 sec/qt

Cushion Volume:

bbbl

Water Loss: 7.19 in<sup>3</sup>

Gas Cushion Type:

Resistivity: ohm.m

Gas Cushion Pressure:

psig

Salinity: 2800.00 ppm

Filter Cake: inches

## Recovery Information

Recovery Table

Length ft	Description	Volume bbbl
2.00	Mud	0.028

Total Length: 2.00 ft      Total Volume: 0.028 bbl

Num Fluid Samples: 0

Num Gas Bombs: 0

Serial #:

Laboratory Name:

Laboratory Location:

Recovery Comments:

Serial #: 8372

Outside Abercrombie Energy LLC.

Roubak #1-26

DST Test Number: 1

