



TRILOBITE TESTING, INC.

DRILL STEM TEST REPORT

Abercrombie Energy LLC.

26-10s-18w Rooks

10209 W. Central
STE 2
Wichita Ks. 67212
ATTN: Steve Murphy

Rouback #1-26

Job Ticket: 49315

DST#: 4

Test Start: 2012.09.21 @ 19:38:05

GENERAL INFORMATION:

Formation: **LKC"H,I"**
 Deviated: No Whipstock: ft (KB)
 Time Tool Opened: 21:37:10
 Time Test Ended: 03:11:59
 Interval: **3434.00 ft (KB) To 3486.00 ft (KB) (TVD)**
 Total Depth: 3486.00 ft (KB) (TVD)
 Hole Diameter: 7.88 inches Hole Condition: Poor
 Test Type: Conventional Bottom Hole (Reset)
 Tester: Andy Carreira
 Unit No: 39
 Reference Elevations: 2076.00 ft (KB)
 2066.00 ft (CF)
 KB to GR/CF: 10.00 ft

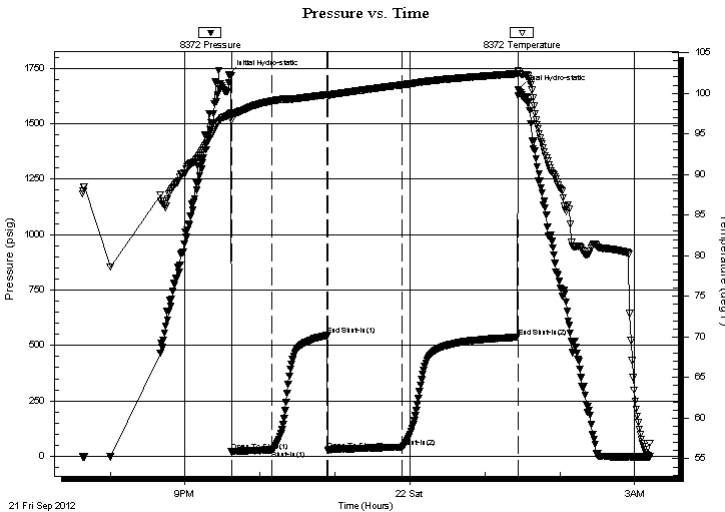
Serial #: 8372

Outside

Press @ RunDepth: 42.44 psig @ 3441.00 ft (KB)
 Start Date: 2012.09.21 End Date: 2012.09.22
 Start Time: 19:38:05 End Time: 03:11:59
 Capacity: 8000.00 psig
 Last Calib.: 2012.09.22
 Time On Btm: 2012.09.21 @ 21:35:20
 Time Off Btm: 2012.09.22 @ 01:26:39

TEST COMMENT: IF:(30min) Weak Surface Blow
 IS:(45min) No Return
 FF:(60min) 1" Blow
 FS:(90min) No Return

PRESSURE SUMMARY



Time (Min.)	Pressure (psig)	Temp (deg F)	Annotation
0	1723.05	97.32	Initial Hydro-static
2	20.73	96.71	Open To Flow (1)
35	28.84	99.04	Shut-In(1)
78	545.75	99.83	End Shut-In(1)
80	26.24	99.74	Open To Flow (2)
139	42.44	101.03	Shut-In(2)
231	537.56	102.41	End Shut-In(2)
232	1651.76	102.82	Final Hydro-static

Recovery

Length (ft)	Description	Volume (bbl)
60.00	HOCGM g=5% o=35% m=60%	0.84
0.00	GIP=60 ft	0.00

* Recovery from multiple tests

Gas Rates

Choke (inches)	Pressure (psig)	Gas Rate (Mcf/d)



**TRILOBITE
TESTING, INC.**

DRILL STEM TEST REPORT

FLUID SUMMARY

Abercrombie Energy LLC.

26-10s-18w Rooks

10209 W. Central
STE 2
Wichita Ks. 67212
ATTN: Steve Murphy

Rouback #1-26

Job Ticket: 49315

DST#: 4

Test Start: 2012.09.21 @ 19:38:05

Mud and Cushion Information

Mud Type: Gel Chem

Mud Weight: 9.00 lb/gal

Viscosity: 58.00 sec/qt

Water Loss: 7.80 in³

Resistivity: ohm.m

Salinity: 3400.00 ppm

Filter Cake: inches

Cushion Type:

Cushion Length: ft

Cushion Volume: bbl

Gas Cushion Type:

Gas Cushion Pressure: psig

Oil API:

Water Salinity: deg API

ppm

Recovery Information

Recovery Table

Length ft	Description	Volume bbl
60.00	HOCGM g=5% o=35% m=60%	0.842
0.00	GIP=60 ft	0.000

Total Length: 60.00 ft Total Volume: 0.842 bbl

Num Fluid Samples: 0

Num Gas Bombs: 0

Serial #:

Laboratory Name:

Laboratory Location:

Recovery Comments:

