



Scale 1:240 (5"=100') Imperial
Measured Depth Log

Well Name: TERRY #1
Location: NE NW SW NE 31-23S-23W
License Number: API #15-083-21811
Spud Date: 07/21/2012
Surface Coordinates: 1615' FROM NORTH LINE OF SECTION, 2280' FROM EAST LINE OF SECTION
Region: HODGEMAN CO. KS.
Drilling Completed: 07/31/2012

Bottom Hole
Coordinates:
Ground Elevation (ft): 2447' K.B. Elevation (ft): 2460'
Logged Interval (ft): 3800 To: 4816 Total Depth (ft): 4816
Formation: CHEROKEE
Type of Drilling Fluid: CHEMICAL, ANDY'S MUD

Printed by WellSight Log Viewer from WellSight Systems 1-800-447-1534 www.WellSight.com

OPERATOR

Company: BEREXCO LLC.
Address: 2020 NORTH BRAMBLEWOOD
WICHITA, KANSAS 67208

GEOLOGIST

Name: DAVID GOULD (LOGGER)
Company: DMT COMPANY
Address: 532 SUNRISE
PRATT, KANSAS 67124

Comments

CONTRACTOR:
BEREDCO RIG#2

BIT RECORD:
#1 12 1/4, SMITH, H08271, 0' - 265'
#2 7 7/8, SMITH, F12Y, PX3653, 265' TO 4766'
#3 7 7/8, SMITH, F271Y, PX4862, 4766' TO 4810'

PIPE STRAP:
4715', -.65'

SURVEYS:
4715', 1 DEGREE

DAILY STATUS @ 7:00 AM:
07/20/2012, MOVE RIG ON LOCATION
07/21/2012, RIG REPAIRS & DRILL SURFACE TO 285
07/22/2012, WOC @ 285, DRILL PLUG & DRILL AHEAD

07/23/2012, 1450' & DRILLING AHEAD
 07/24/2012, 2565' & DRILLING AHEAD
 07/25/2012, 3320' & DRILLING AHEAD
 07/26/2012, 4025' & DRILLING AHEAD
 07/27/2012, 4494' & DRILLING AHEAD TO 4715', DST #1
 07/28/2012, 4715' DST #1 & WORK ON RIG
 07/29/2012, 4715', WORK ON RIG, DRILL AHEAD TO 4766, BIT TRIP
 07/30/2012, 4810, LOG
 07/31/2012, LAY DOWN PIPE AND RUN PRODUCTION CASING

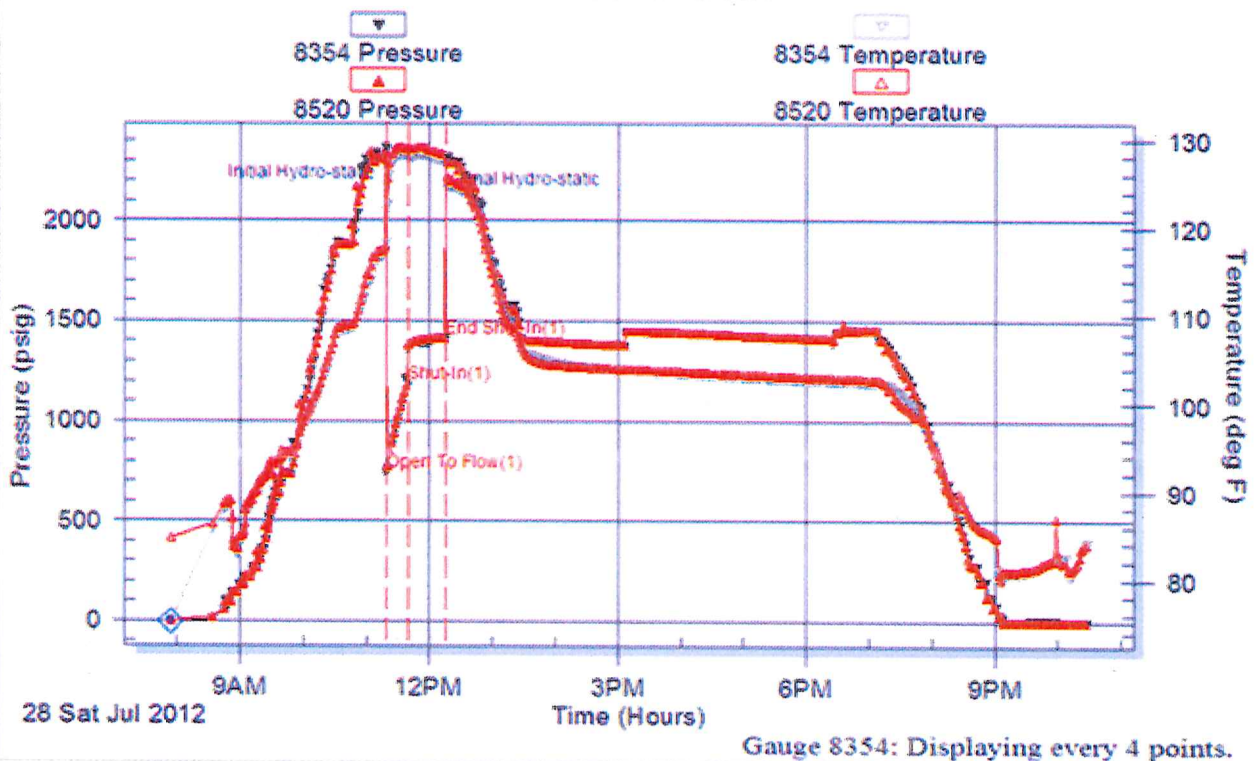
LOGGING:

LOG TECH

DUAL INDUCTION, COMPENSATED NEUTRON DENSITY AND MICRO

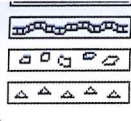
Interval Tested: 4702 - 4715 Zone Tested: Cherokee Sand
 Initial Open: 15 Minutes Initial Shut-In: 30 Minutes Final Flow: Pulled Final Shut-In: N/A
 Blow Description:
 Initial Flow: Strong building blow, BOB in 15 Seconds Initial Shut-In: Return @ 30 seconds, BOB in 9 minutes 15 seconds
 Final Flow: Pulled Tool Second Shut-In: N/A
 Initial Hydrostatic: 2354 First Initial Flow: 741 First Final Flow: 1180 Initial Shut-In: 1409
 Final Hydrostatic: 2320 Second Initial Flow: 741 Second Final Flow: N/A Second Shut-In: N/A
 Recovered:
 2966' of Gassy oil, 40% Gas, 60% Oil, 0% Water, 0% Mud, 92' of Mud, 186' of Gas in Pipe, Total Recovered: 3058'
 Bottom Hole Temp: 128

Pressure vs. Time

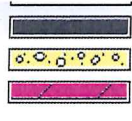


ROCK TYPES

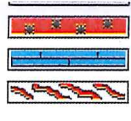




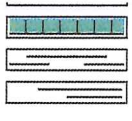
Army
Bent
Brec
Cht



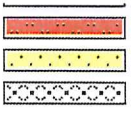
Cryst
Coal
Congl
Dol



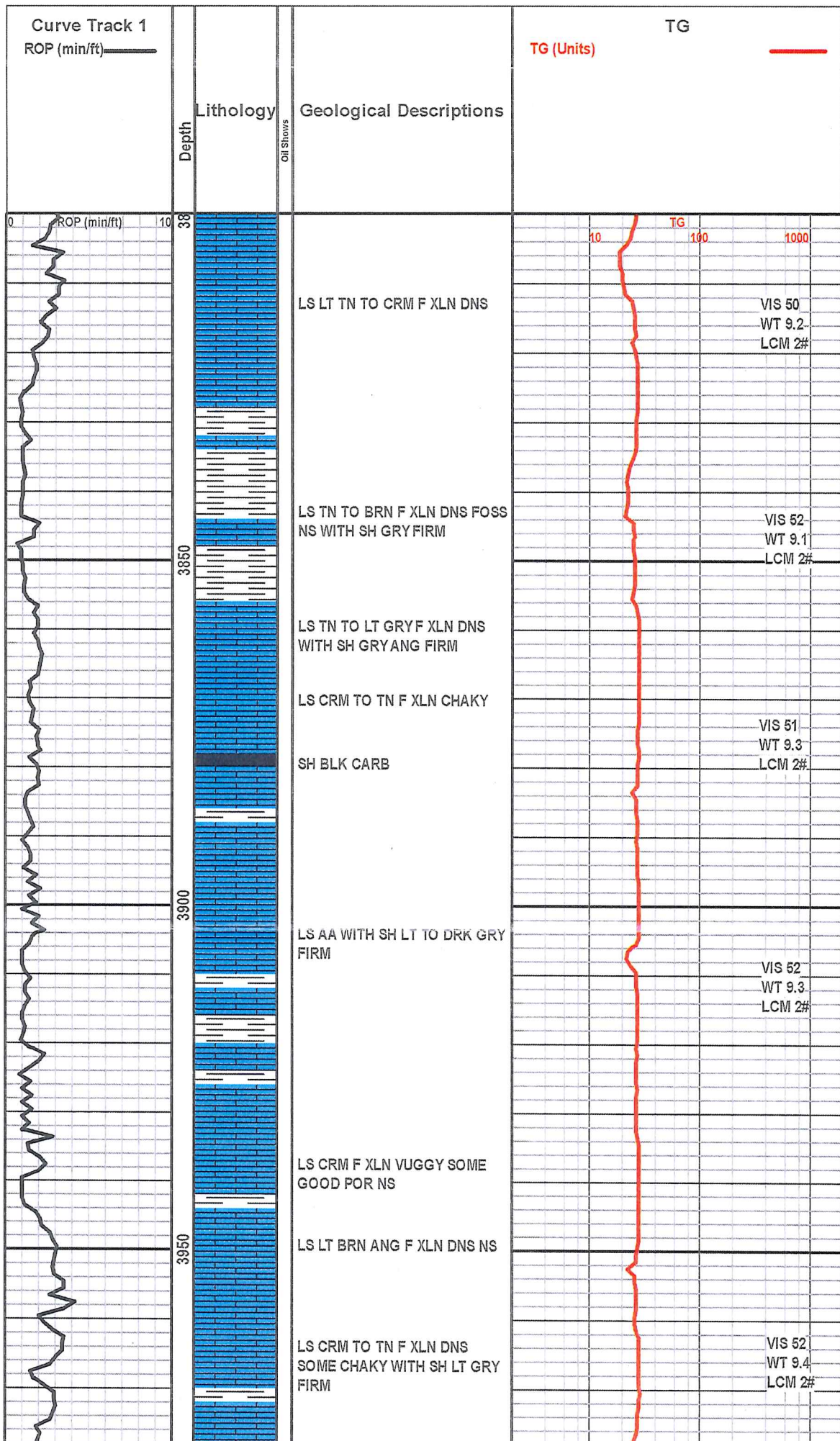
Gyp
Igne
Lmst
Meta

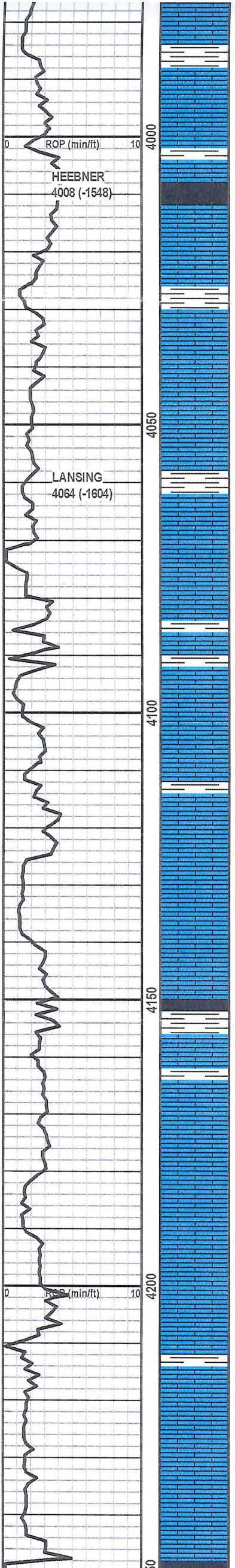


Mtlst
Salt
Shale
Shcol



Slgy
Sltst
Ss
Till





LS TN TO LT GRY F XLN WITH SH DRK GRY TO DRK GRY FIRM

SH BLK CARB

LS TN TO BRN F XLN ANG DNS WITH LS CRM F-VF XLN CHAKY

LS TN TO BRN ANG F XLN DNS NS

LS TN TO CRM ANG F XLN DNS WITH SH GRY FIRM

LS LT BRN TO TN ANG FXLN FOSS NS WITH SH GRY TO GRN SLIGHTLY SILTY

MOSTLY LS AA WITH LS DRK GRY ANG V DNS CHERTY

LS TN TO BRN F TO M XLN ANG DNS WITH CHERT WHT TO TN ANG SHARP V DNS WITH SH DRK GRY

LS BRN TO DRK BRN F XLN VUGGY POOR FRAC POR WITH CHERT BRN ANG V DNS WITH TR PYRITE

SH BLK CARB

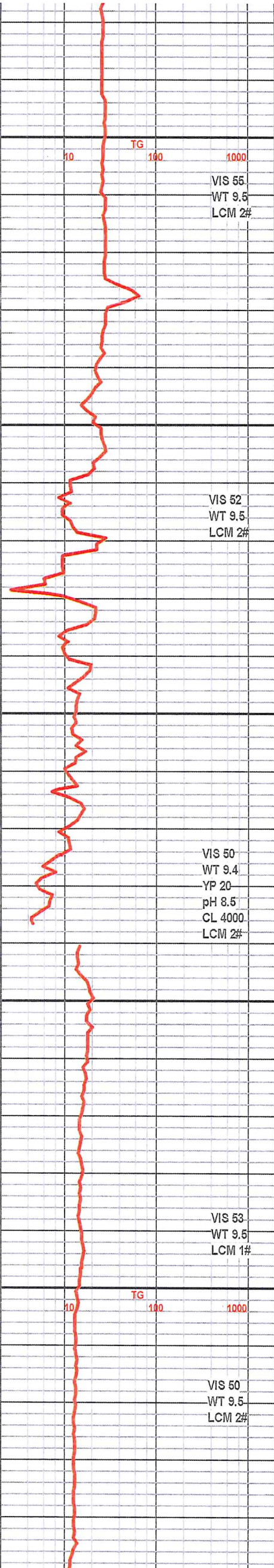
LS AA WITH SOME BEING FOSS WITH SH GRY TO DRK GRY FIRM

LS CRM TO TN F XLN DNS WITH CHERT LT TN ANG SHARP V DNS

LS TN F XLN POOR POR SHIGHT SHOW OF DEAD OIL NO FLOR NO CUT

LS TN F XLN POOR POR DNS SOME SLIGHTLY CHAKY

LS TN TO BRN F-M XLN DNS NS WITH SH GRN TO LT GRY ANG FIRM



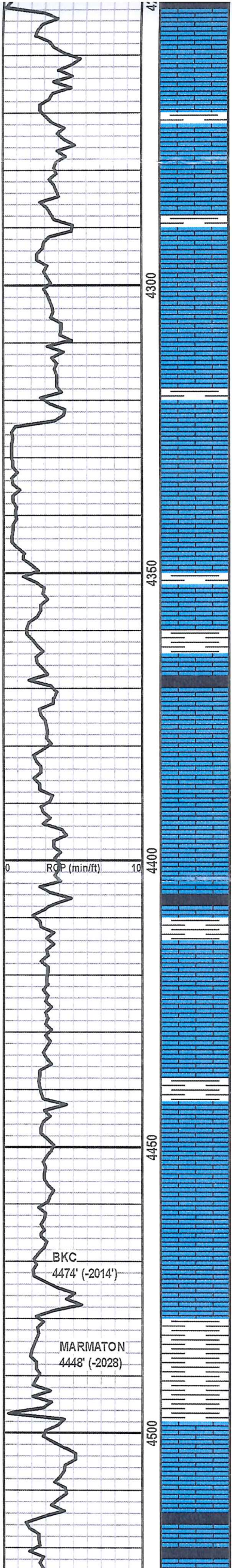
VIS 55
WT 9.5
LCM 2#

VIS 52
WT 9.5
LCM 2#

VIS 50
WT 9.4
YP 20
pH 8.5
CL 4000
LCM 2#

VIS 53
WT 9.5
LCM 1#

VIS 50
WT 9.5
LCM 2#



LS AA WITH SH LT GRY
SLIGHTLY SILTY

LS TN TO BRN F XLN DNS
SOME BEING CHERTY WITH
CHERT WHT ANG V DNS

LS TN F XLN OOLIC SOME FAIR
FLOR N CUT NO SHOW OF
FREE OIL OR GAS BUBBLES N
ODER

LS TN F XLN GOOD OOLIC POR
FAIR FLOR N CUT NO SHOW
OF OIL OR GAS BUBBLES

LS DRK GRY F XLN FOSS ANY
DNS CHERT LT TN ANG HD SH
GRN TO GRY TO BLK FIRM
WITH TR PYRITE

SH BLK CARB

LS TN F XLN ANG DNS NS

LS TN ANG TO SUB ANG M TO
F XLN DNS WITH SOME GOOD
OOLIC POR NS

SH BLK CARB

LS AA WITH LS BRN ANG F XLN
V DNS WITH SH GRN TO GRY
TO DRK GRY FIRM

LS & SH AA

LS BRN F XLN ANG VUGGY DNS
NS WITH SH DRK GRY TO BLK
FIRM

LS TN TO CRM F XLN ANG DNS
WITH SOME BEING SLIGHTLY
CHAKY

SH GRN TO LT GRY FIRM

LS BUFF TO TN F XLN ANG VP
POR NS

REZERO

VIS 50
WT 9.4
LCM 2#

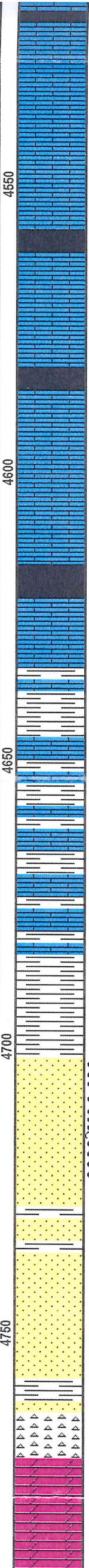
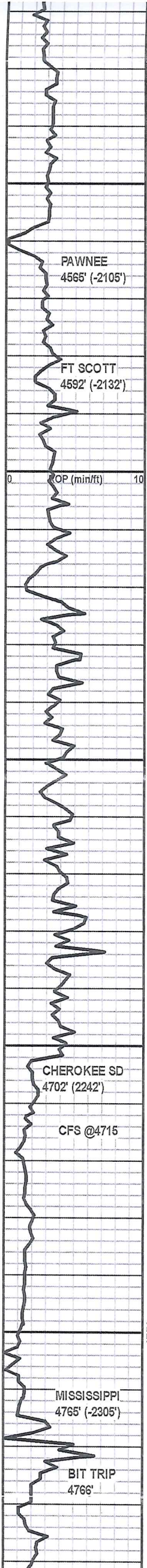
VIS 50
WT 9.4
LCM 2#

VIS 48
WT 9.6
LCM 2#

VIS 45
WT 9.4
LCM 1#

VIS 49
WT 9.5
LCM 3#

10 TG 100 1000



LS DRK GRY ANG DNS NS WITH SH DRK GRY TO BLK SOME CARB

LS TN TO BRN ANG SLIGHTLY FOSS DNS WITH SH GRN TO GRY FIRM

SH RED GRN GRY FIRM WITH SH BLK CARB WITH LS LT GRY TO BRN F XLN ANG DNS

SH BLK CARB

LS TN F XLN FOSS ANG DNS

SH MULTI COLOR GRY GRN RED BLK

LS TN F XLN ANG DNS WITH TR PYRITE

SH BLK CARB

LS GRY TO TN F XLN ANY WITH SH GRN TO GRY FIRM

LS CRM TO TN F XLN ANG DNS SOME SLIGHTLY CHAKY

LS AA WITH LS BRN ANG V DNS WITH SH GRY TO GRN FIRM

LS CRM TO TN TO BRN F-M XLN ANG DNS WITH SH GRY TO GRN TO BLK FIRM

LS BRN F-M XLN SLIGHTLY FOSS DNS NS WITH SH AA

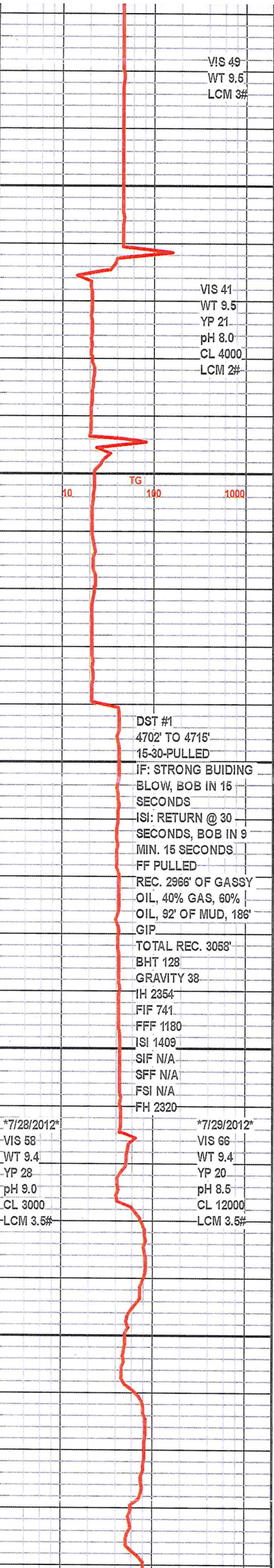
LS TN TO BRN F-M XLN DNS NS WITH SH GRY FIRM

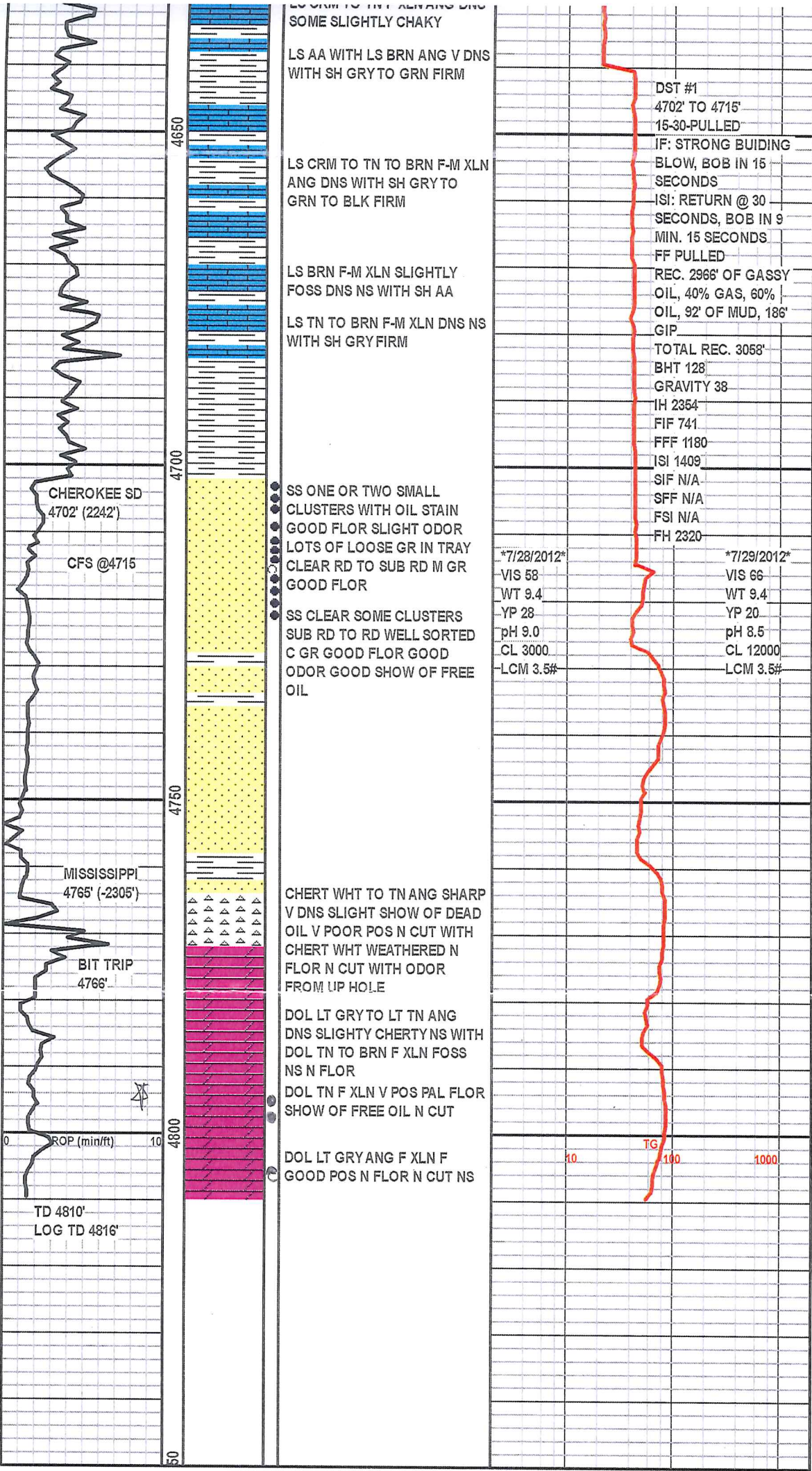
SS ONE OR TWO SMALL CLUSTERS WITH OIL STAIN GOOD FLOR SLIGHT ODOR LOTS OF LOOSE GR IN TRAY CLEAR RD TO SUB RD M GR GOOD FLOR

SS CLEAR SOME CLUSTERS SUB RD TO RD WELL SORTED C GR GOOD FLOR GOOD ODOR GOOD SHOW OF FREE OIL

CHERT WHT TO TN ANG SHARP V DNS SLIGHT SHOW OF DEAD OIL V POOR POS N CUT WITH CHERT WHT WEATHERED N FLOR N CUT WITH ODOR FROM UP HOLE

DOL LT GRY TO LT TN ANG DNS SLIGHTY CHERTY NS WITH DOL TN TO BRN F XLN FOSS NS N FLOR





LS CRM TO TN TO BRN F-M XLN ANG DNS WITH SH GRY TO GRN TO BLK FIRM
 LS AA WITH LS BRN ANG V DNS WITH SH GRY TO GRN FIRM
 LS BRN F-M XLN SLIGHTLY FOSS DNS NS WITH SH AA
 LS TN TO BRN F-M XLN DNS NS WITH SH GRY FIRM
 SS ONE OR TWO SMALL CLUSTERS WITH OIL STAIN GOOD FLOR SLIGHT ODOR LOTS OF LOOSE GR IN TRAY CLEAR RD TO SUB RD M GR GOOD FLOR
 SS CLEAR SOME CLUSTERS SUB RD TO RD WELL SORTED C GR GOOD FLOR GOOD ODOR GOOD SHOW OF FREE OIL
 CHEROKEE SD 4702' (2242')
 CFS @4715
 MISSISSIPPI 4765' (-2305')
 BIT TRIP 4766'
 TD 4810'
 LOG TD 4816'
 ROP (min/ft)
 TG
 10 100 1000

DST #1
 4702' TO 4715'
 15-30-PULLED
 IF: STRONG BUILDING BLOW, BOB IN 15 SECONDS
 ISI: RETURN @ 30 SECONDS, BOB IN 9 MIN. 15 SECONDS
 FF PULLED
 REC. 2966' OF GASSY OIL, 40% GAS, 60% OIL, 92' OF MUD, 186' GIP
 TOTAL REC. 3058'
 BHT 128
 GRAVITY 38
 IH 2354
 FIF 741
 FFF 1180
 ISI 1409
 SIF N/A
 SFF N/A
 FSI N/A
 FH 2320

7/28/2012	*7/29/2012*
VIS 58	VIS 66
WT 9.4	WT 9.4
YP 28	YP 20
pH 9.0	pH 8.5
CL 3000	CL 12000
LCM 3.5#	LCM 3.5#