

KEVIN L. KESSLER
CONSULTING PETROLEUM GEOLOGIST
(316) 522-7338

OPERATOR : MULL DRILLING COMPANY INC.
LEASE : JONES - GARVEY UNIT WELL # : 1 - 11
LOCATION : 2614' FSL & 527' FWL
SEC: 11 TWP : 15 S RGE : 27 W
COUNTY : GOVE STATE : KANSAS

ELEVATION
KB : 2447
GL : 2442
 MEASUREMENTS FROM
KB

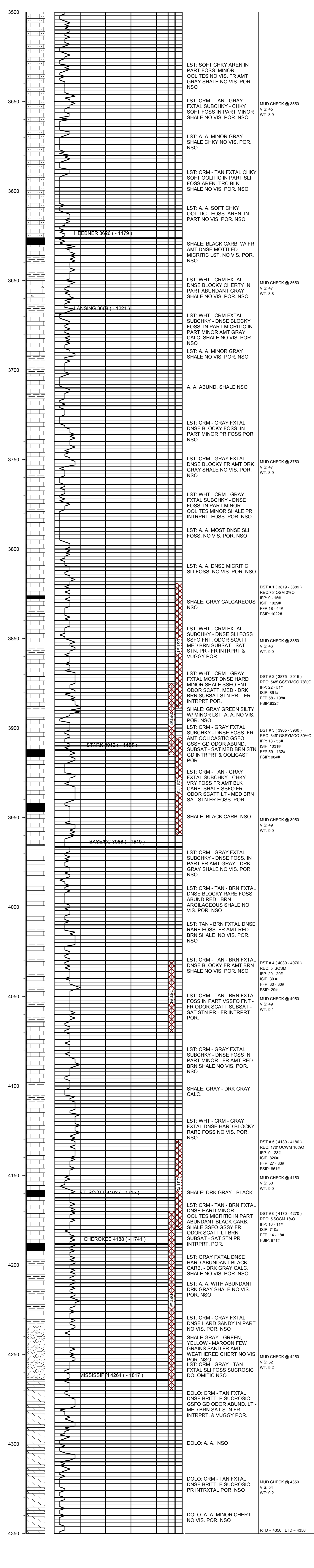
CONTRACTOR : WW DRILLING RIG # 10
COMM : 07 / 05 / 2012 COMP : 07 / 14 / 2012
RTD : 4350 LOG TD : 4356
SAMPLES SAVED FROM : 3500 TO : RTD
GEOLOGICAL SUPERVISION FROM : 3500 TO : RTD
MUD UP : 3400 TYPE MUD : CHEMICAL

CASING RECORD
SURFACE :
8 5/8" @ 233'
PRODUCTION :
5 1/2" @ 4350'

FORMATION	TOP	LOG	DATUM	TOP	SAMPLE	DATUM	STRUCT. COMP.
HEEBNER	3626		- 1179	3626		- 1179	+ 01
LANSING	3668		- 1221	3668		- 1221	- 02
STARK	3912		- 1465	3912		- 1465	- 02
BASE/KC	3966		- 1519	3966		- 1519	- 02
FORT SCOTT	4162		- 1715	4162		- 1715	- 06
CHEROKEE	4188		- 1741	4188		- 1741	- 06
MISSISSIPPI	4264		- 1817	4264		- 1817	- 18

ELECTRICAL SURVEYS:
 DIL
 CNL / CDL
 MICRO
 SONIC

REFERENCE WELL FOR STRUCTURAL COMPARISON :
CHIEF DRILLING #1 JONES 'D' SEC 11 - T 15 S - R 27 W GOVE COUNTY KANSAS



COMMENTS:
 5 1/2" PRODUCTION CASING WAS SET TO FURTHER EVALUATE THE PRODUCTIVITY OF THIS WELL

KEVIN L. KESSLER