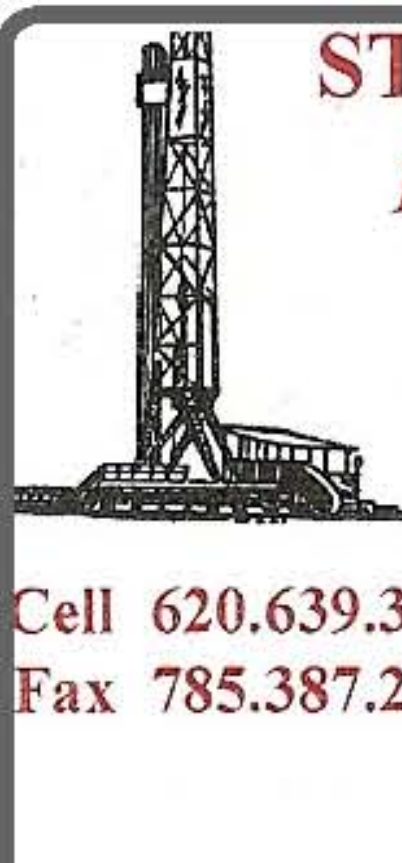


# STEVEN P. MURPHY, P.G.

## Petroleum Geologist (KS #228)



Cell 620.639.3030  
Fax 785.387.2400

RR#1, Box 69  
Otis, Kansas 67565  
geomurphy@gbta.net

Scale 1:240 (5"-100') Imperial  
Measured Depth Log

**Well Name:** Roubek #1-26  
**Location:** Rooks County  
**License Number:** API #15-163-24077-00-00  
**Spud Date:** 9/14/12  
**Drilling Completed:** 9/23/12  
**Region:** Kansas  
**Surface Coordinates:** 330' FSL & 1340' FEL (Approx. E2 SE SW SE)  
**Section:** 30-Township 9 South-Range 21 West  
**Bottom Hole Coordinates:** Same as above (Vertical well with minimal deviation)  
**Ground Elevation (ft):** 2096' **K.B. Elevation (ft):** 2076'  
**Logged Interval (ft):** 2890 **To:** 3720' **RTD/Total Depth (ft):** LTD - 3723'  
**Formation:** Topeka thru Arbuckle  
**Type of Drilling Fluid:** Chemical (Mudco - Gary Schmitter, Mud Engineer)  
Printed by WellSight Log Viewer from WellSight Systems 1-800-447-634 www.WellSight.com

### OPERATOR

**Company:** Abercrombie Energy, LLC  
**Address:** 10209 W. Central, Suite 2  
Wichita, KS 67212

### GEOLOGIST

**Name:** Steven P. Murphy, PG  
**Company:** Consulting Petroleum Geologist (KS License #228)  
**Address:** 3365 County Rd 390  
Otis, KS 67565  
**Cell Phone No:** 620-639-3030

### LogTops (Datum)

The open-hole logging was performed by Log-Tech, aka Pioneer Energy Systems (Hays, KS shop). Logs included Sonic, Dual Compensated Porosity, Dual Induction & Microresistivity.

Formation tops and datums from the open-hole logs include the following:

- Topoka - 3052 (-976)
- Heebner - 3274 (-1198)
- Toronto - 3291 (-1215)
- Lansing - 3314 (-1238)
- Muncie Crk - 3437 (-1361)
- Stark - 3498 (-1422)
- Hushpuckney - 3523 (-1447)
- BKC - 3538 (-1462)
- Arbuckle - 3672 (-1596)

### DSTs

The following drillstem tests were performed by Andy Cerreira w/Tribolite Testing (Hays shop):

**DST #1 3264-3320 (Toronto-LKC "A")**  
30-30-30-30  
IF: Wk blow died in 4 min, no return  
FF: No blow, no return  
Recovery: 2' Mud  
IHP: 1587 FHP: 1555  
IFP: 19-22 ISIP: 40  
FFP: 19-23 FSIP: 28  
BHT - 98 F

**DST #2 3324-3376 (LKC "B & D")**  
30-30-30-30  
IF: Blow died in 3 min, no return  
FF: No blow, no return  
Recovery: 3' Mud  
IHP: 1622 FHP: 1593  
IFP: 19-21 ISIP: 396  
FFP: 21-24 FSIP: 378  
BHT - 97 F

**DST #3 3374-3410 (LKC "E, F, G")**  
30-30-45-45  
IF: Wk surf blow, no return  
FF: Wk surf blow, no return  
Recovery: 5' clean oil, 65' MW (60% W, 40% M)  
IHP: 1612 FHP: 1582  
IFP: 19-33 ISIP: 481  
FFP: 37-52 FSIP: 474  
BHT - 101 F  
Chlorides - 52,000ppm

**DST #4 3434-3486 (LKC "H & I")**  
30-45-60-90  
IF: Wk surf blow, no return  
FF: 1" blow, no return  
Recovery: 60' GIP, 60' HOCGM (5% G, 35% O, 60% M)  
IHP: 1723 FHP: 1651  
IFP: 19-28 ISIP: 545  
FFP: 26-42 FSIP: 537  
BHT - 102 F

**DST #5 3486-3516 (LKC "J & K")**  
30-30-30-30  
IF: Blow died in 6 min, no return  
FF: No blow, no return  
Recovery: 5' Oil Spotted Mud  
IHP: 1753 FHP: 1714  
IFP: 16-21 ISIP: 687  
FFP: 21-22 FSIP: 643  
BHT - 98 F

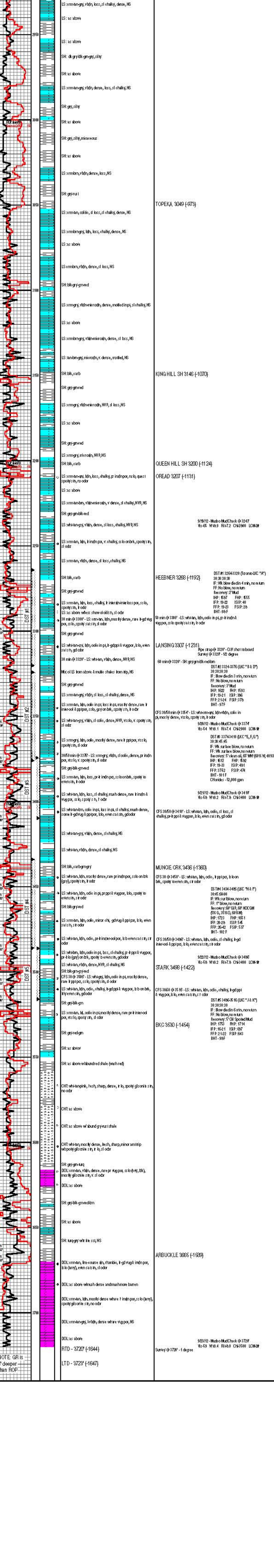
### COMMENTS

The Roubek #1-26 was drilled by Val Energy Rig #3 (Tool pusher Greg Davidson).  
Based on the results of DST's, and sample & log analysis, it was recommended and agreed that this well be plugged at a rotary total depth of 3720' (LTD of 3723'). Dry samples were shipped to the Kansas Geological Survey Sample Library in Wichita, KS.

Respectfully submitted,  
Steven P. Murphy, PG  
Consulting Petroleum Geologist  
(KS License #228)

ROCK TYPES			

OTHER SYMBOLS			



NOTE: GR is 3' deeper than BOP

NOTE: GR is 3' deeper than BOP